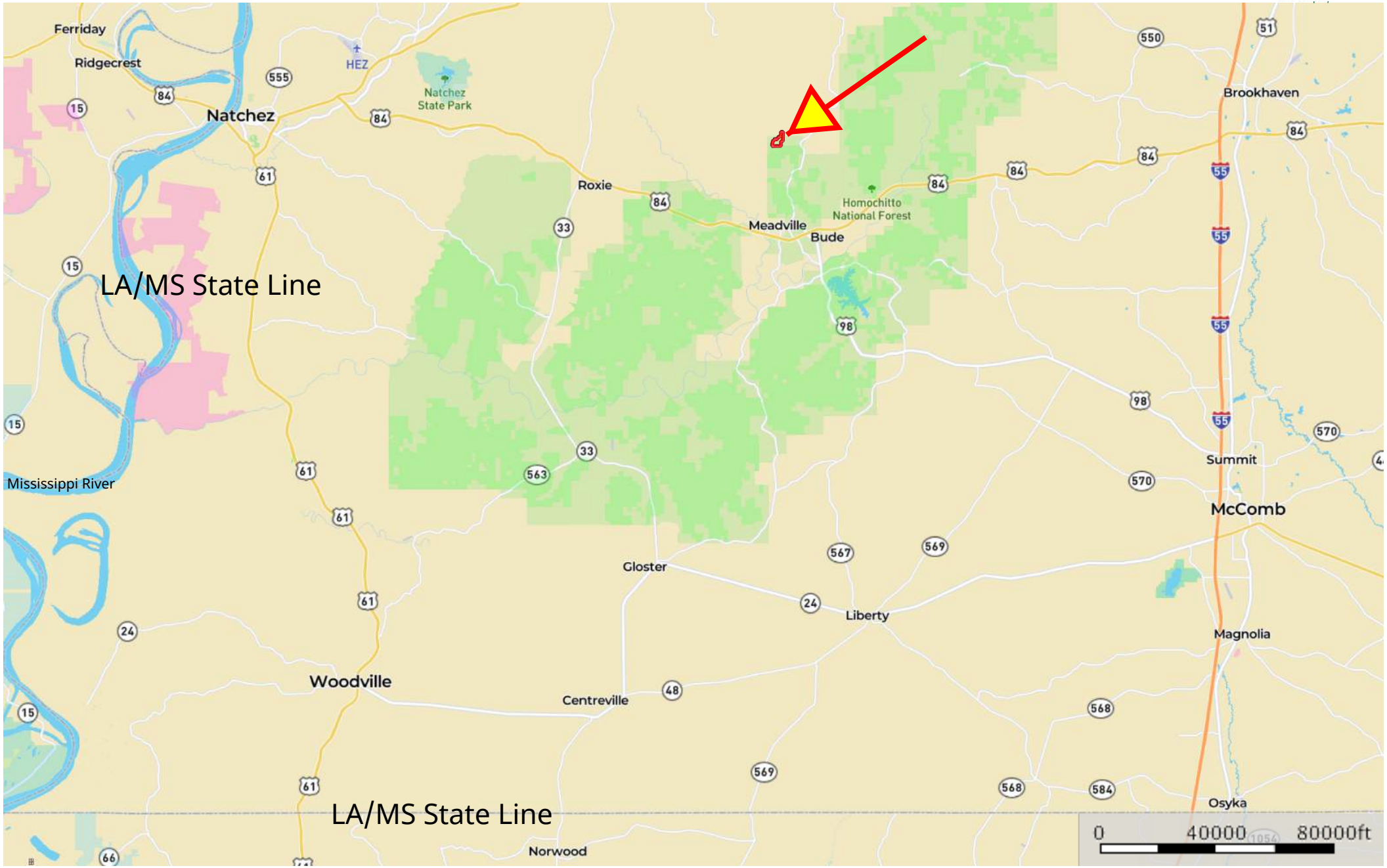


170 Acres @ Ezell Road, Meadville, Franklin County, MS

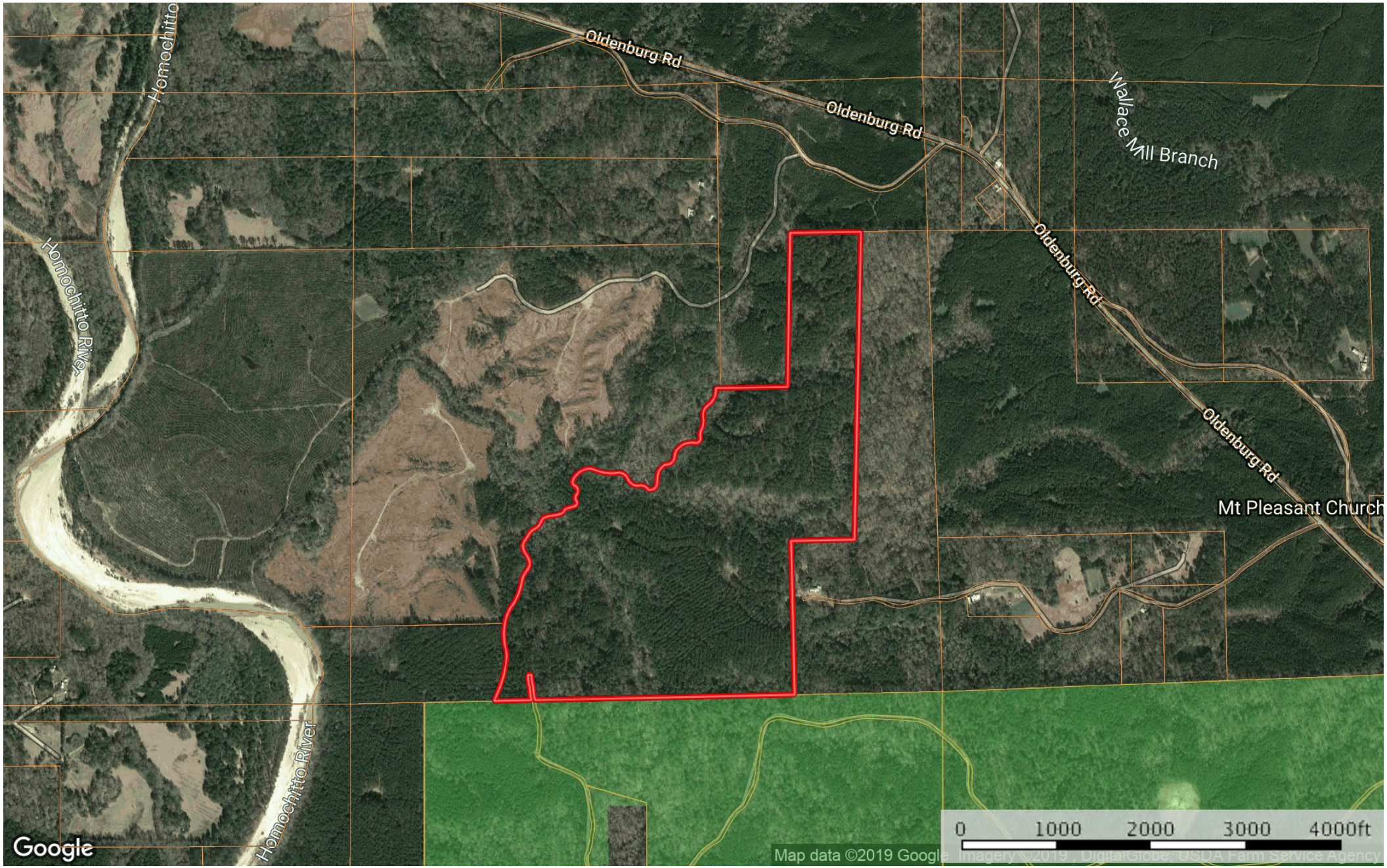
Franklin County, Mississippi, 170 AC +/-




- Boundary
- Forest Service
- State Land
- Fish and Wildlife
- National Park
- Other
- BLM

170 Acres @ Ezell Road, Meadville, Franklin County, MS

Franklin County, Mississippi, 170 AC +/-

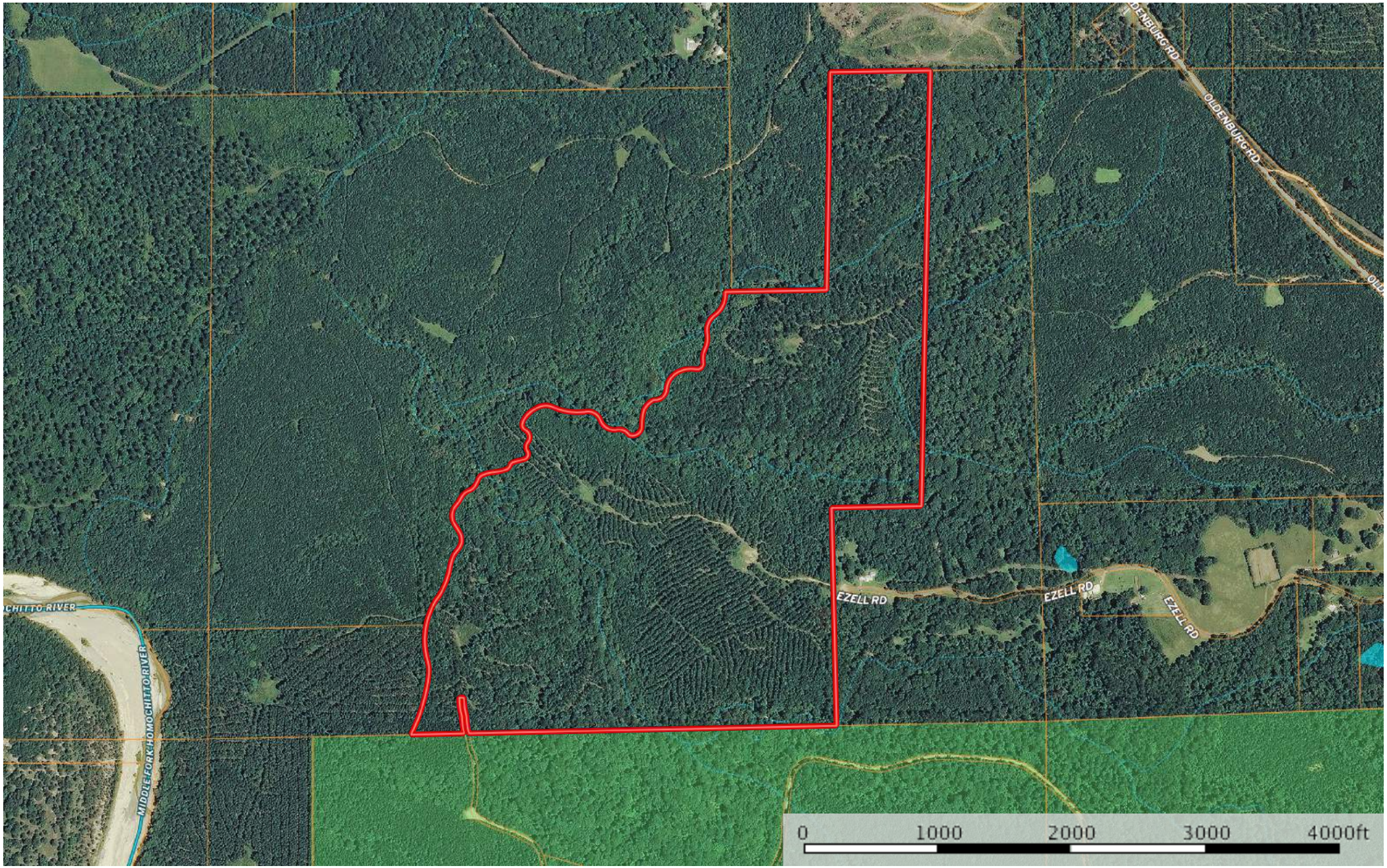


-  Boundary
-  Forest Service
-  State Land
-  Fish and Wildlife
-  National Park
-  Other
-  BLM

 The information contained herein was obtained from sources deemed to be reliable. MapRight Services makes no warranties or guarantees as to the completeness or accuracy thereof.

170 Acres @ Ezell Road, Meadville, Franklin County, MS

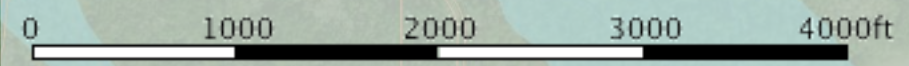
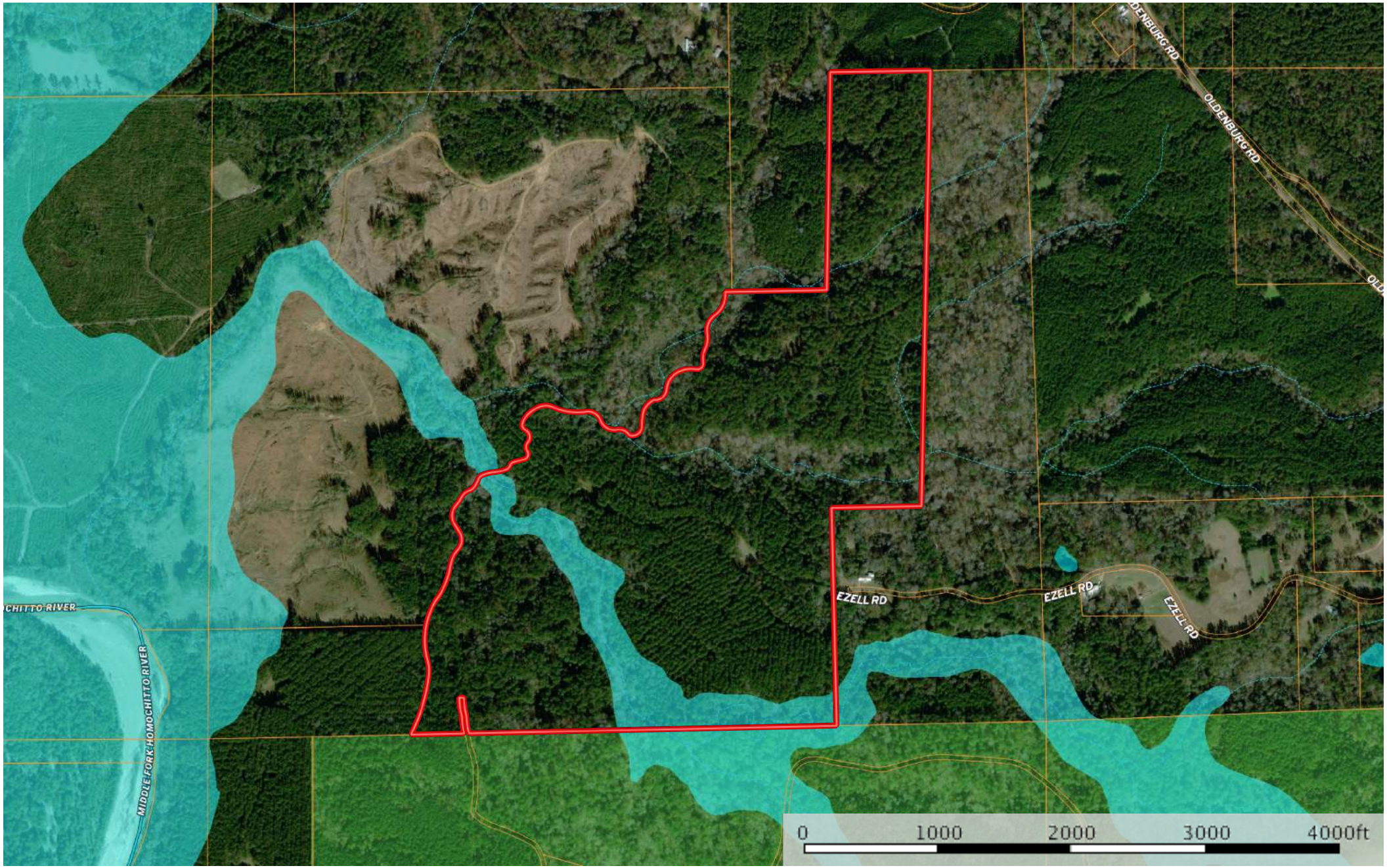
Franklin County, Mississippi, 170 AC +/-



- Boundary
- Forest Service
- State Land
- Fish and Wildlife
- National Park
- Other
- BLM
- Stream, Intermittent
- River/Creek
- Water Body

170 Acres @ Ezell Road, Meadville, Franklin County, MS

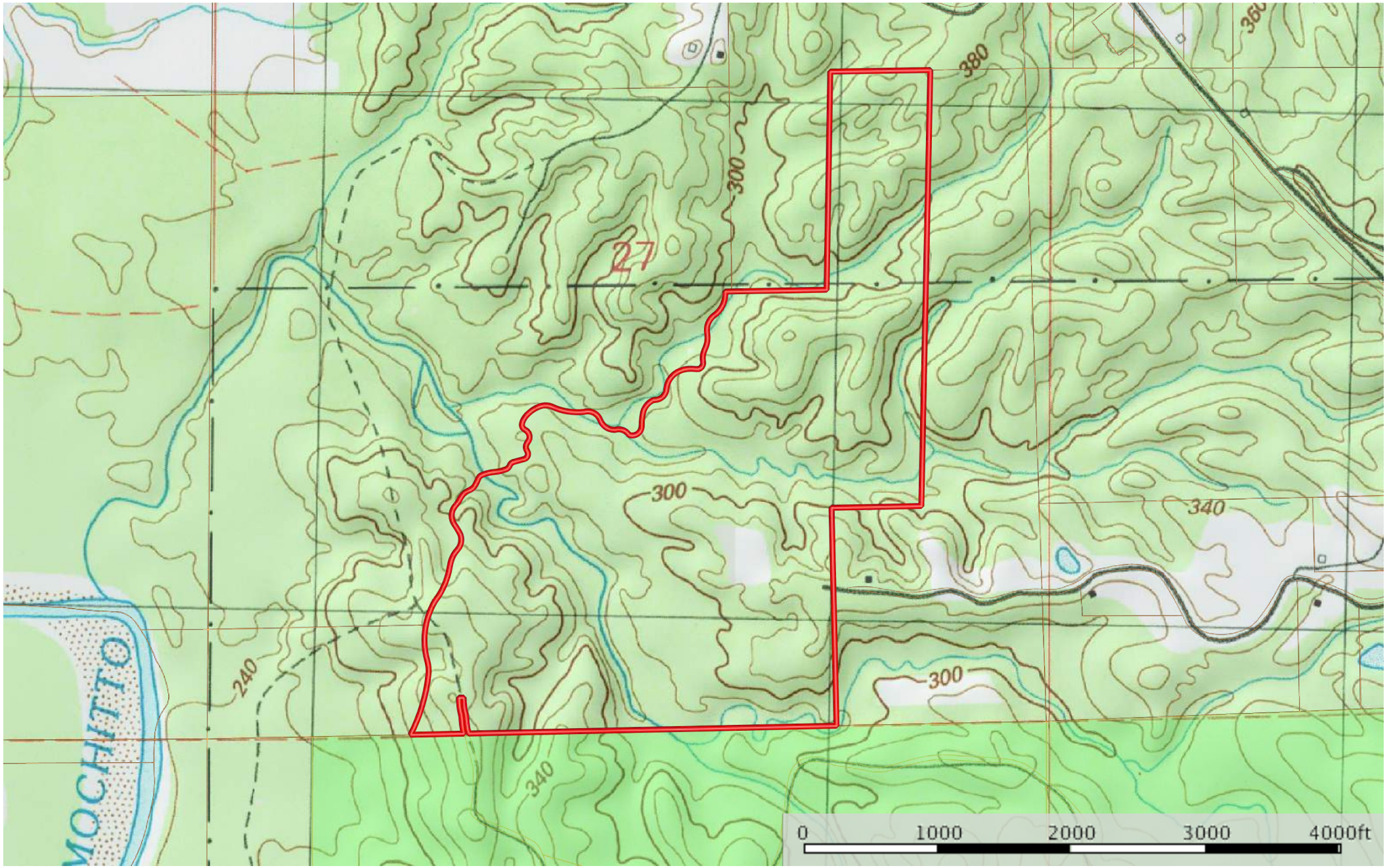
Franklin County, Mississippi, 170 AC +/-



- Boundary
- Forest Service
- State Land
- Fish and Wildlife
- National Park
- Other
- BLM
- 100 Year Floodplain
- 500 Year Floodplain
- Floodway
- Special
- Unmapped/ Not Included
- Stream, Intermittent
- River/Creek
- Water Body

170 Acres @ Ezell Road, Meadville, Franklin County, MS

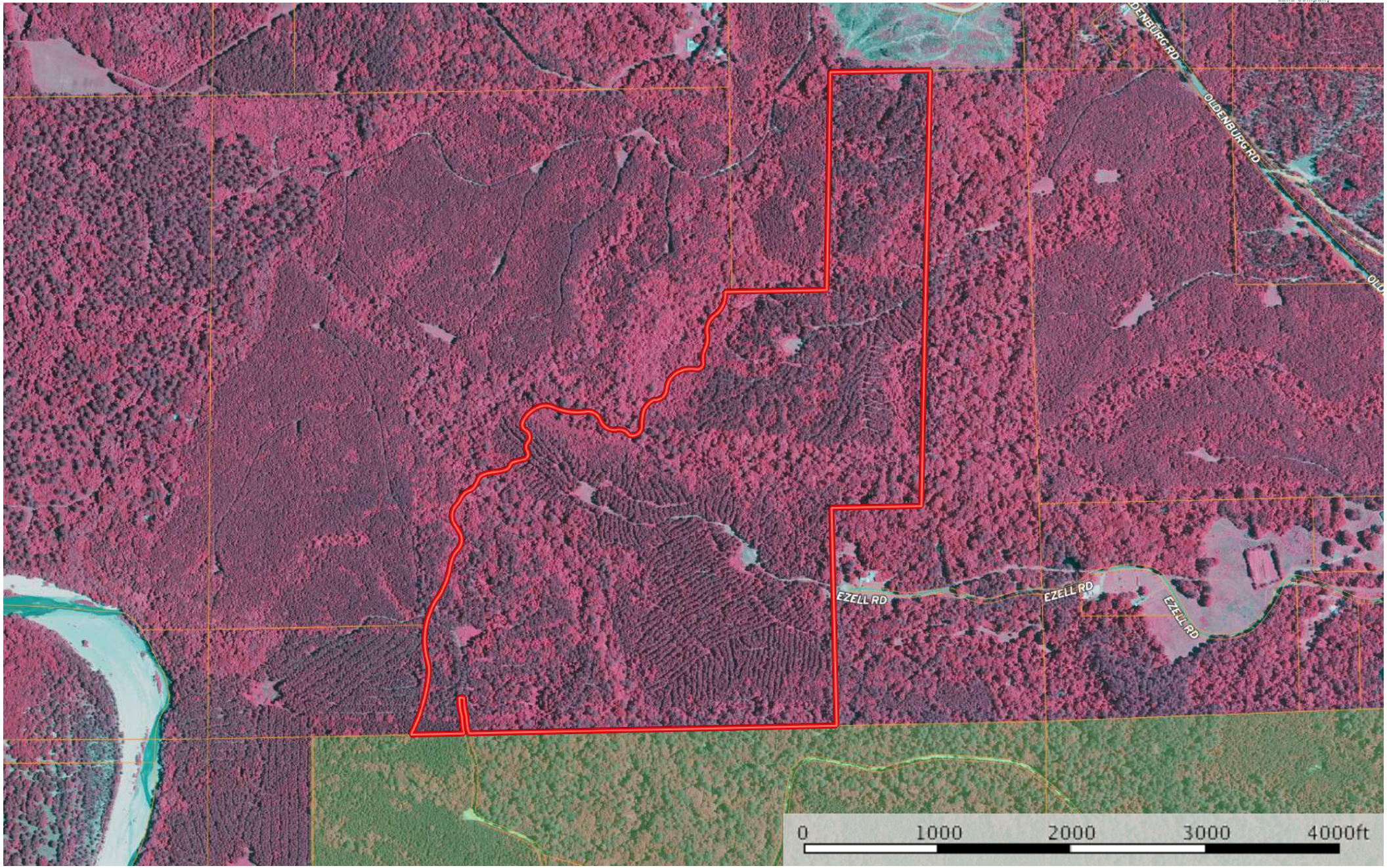
Franklin County, Mississippi, 170 AC +/-



- Boundary
- Forest Service
- State Land
- Fish and Wildlife
- National Park
- Other
- BLM

170 Acres @ Ezell Road, Meadville, Franklin County, MS

Franklin County, Mississippi, 170 AC +/-



-  Boundary
-  Forest Service
-  State Land
-  Fish and Wildlife
-  National Park
-  Other
-  BLM