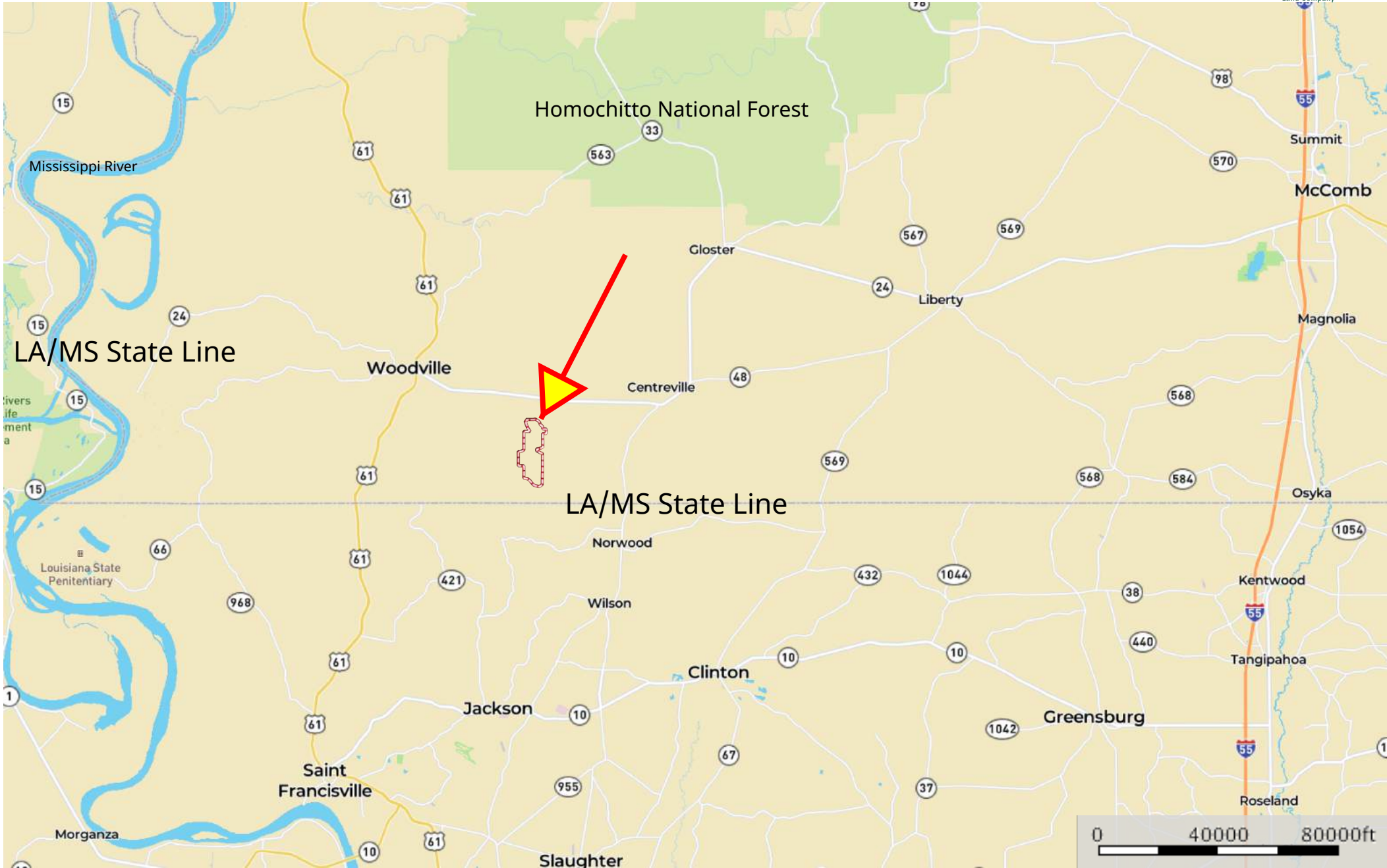


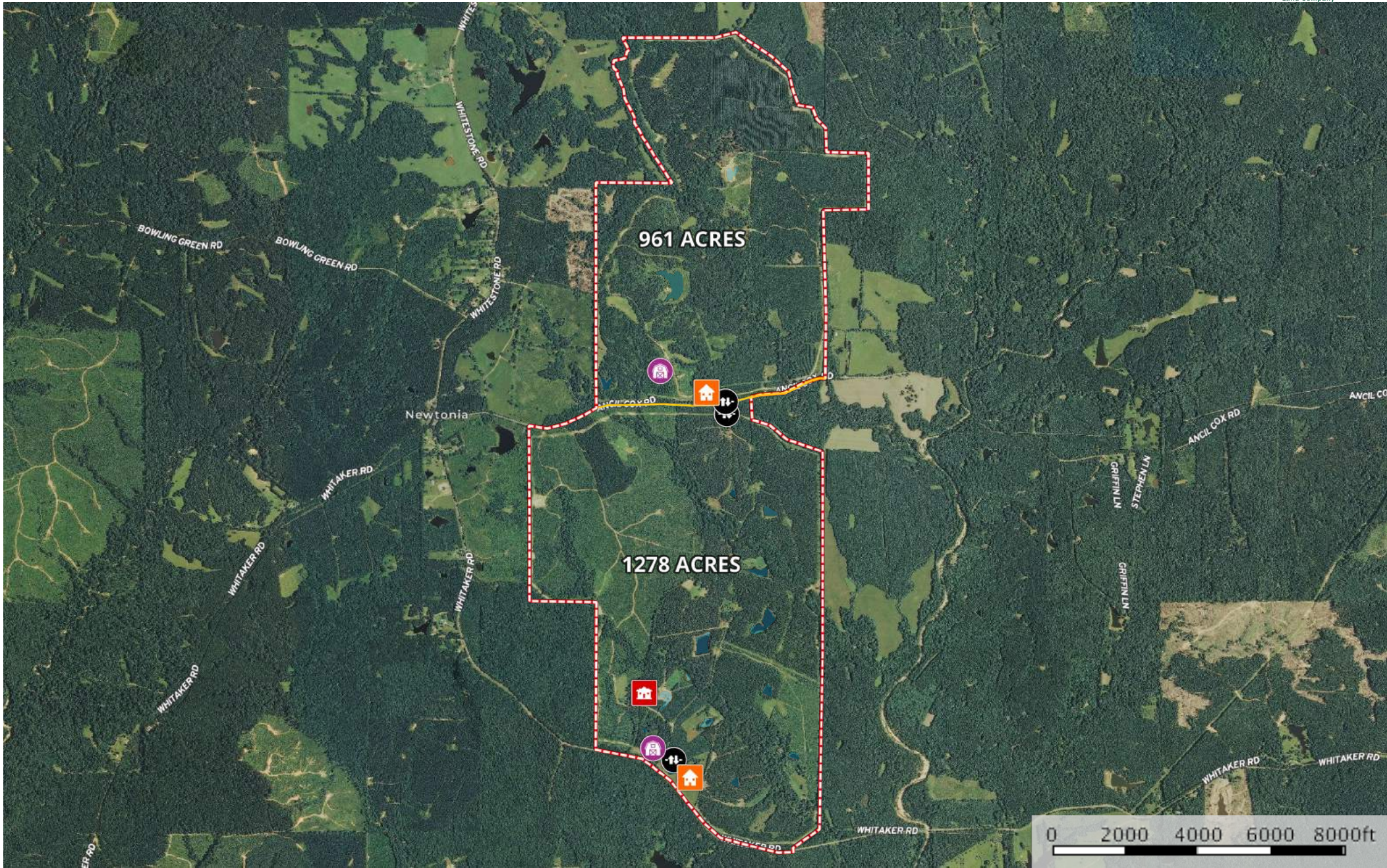
Whitney Ranch - North & South
Wilkinson County, Mississippi, 2239 AC +/-



Boundary

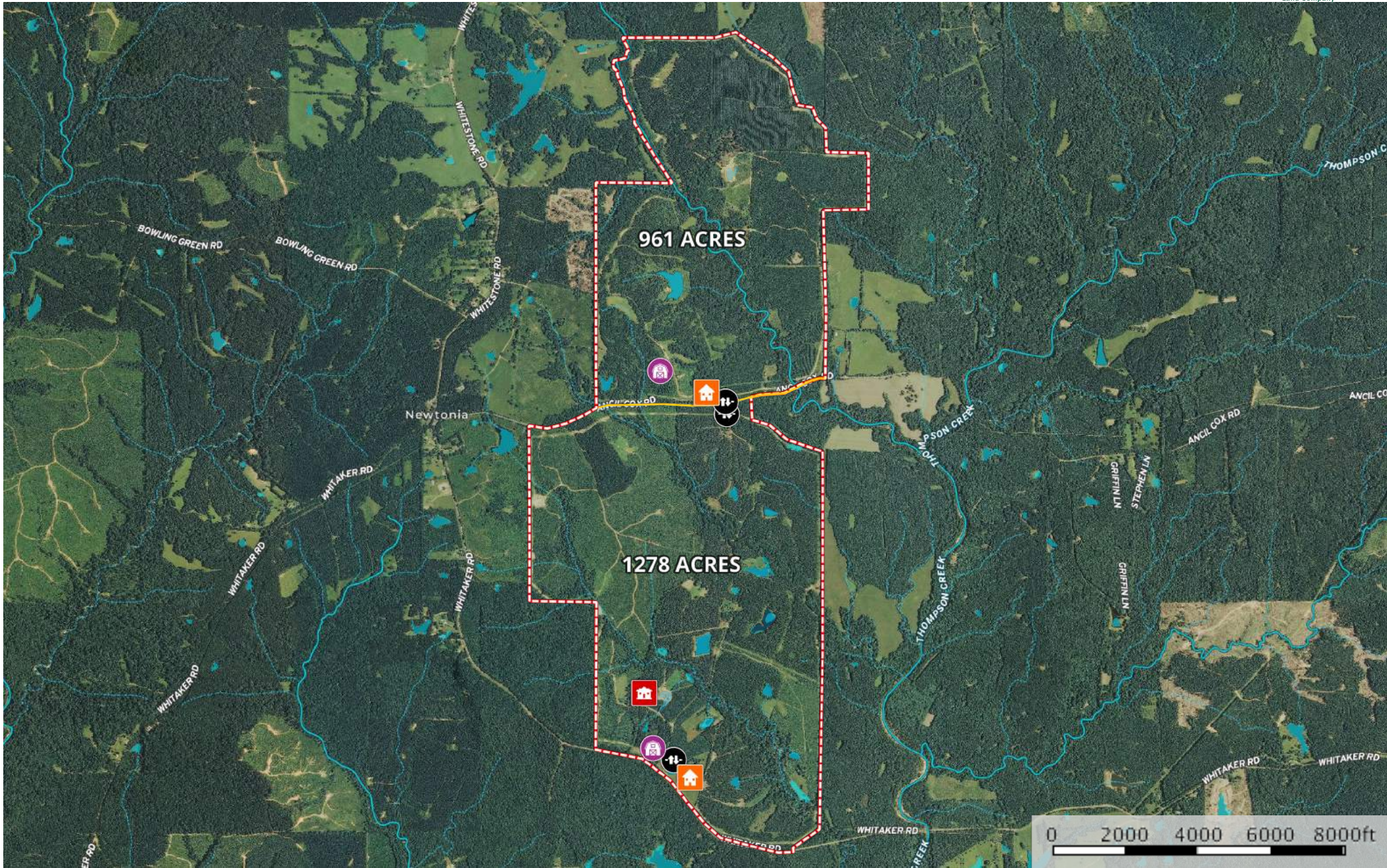


Whitney Ranch - North & South
Wilkinson County, Mississippi, 2239 AC +/-



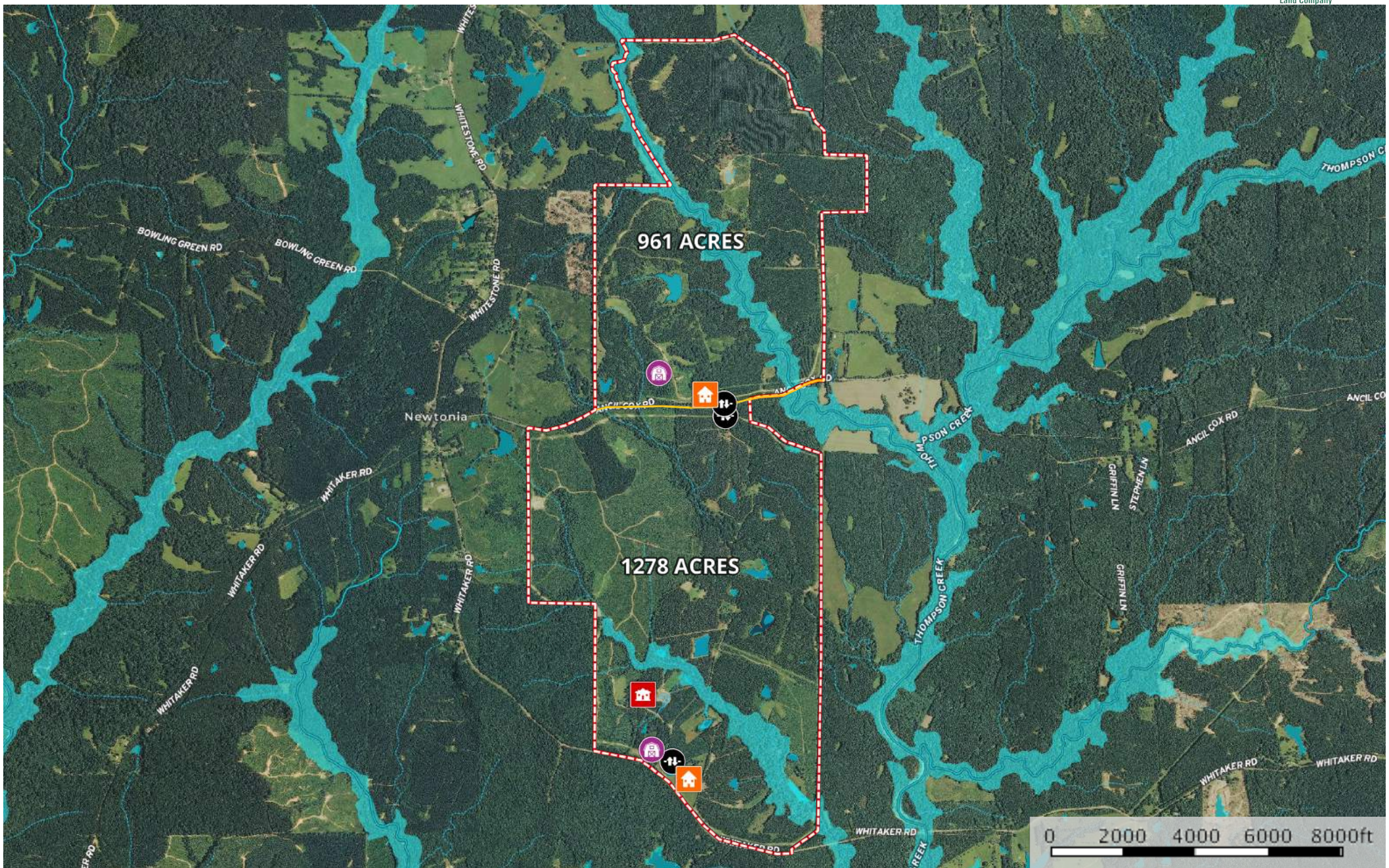
- House
- Barn
- Main House
- Gate
- Primary Road
- Pond / Tank
- Boundary

Whitney Ranch - North & South
Wilkinson County, Mississippi, 2239 AC +/-



- House
- Barn
- Main House
- Gate
- Primary Road
- Pond / Tank
- Boundary
- Stream, Intermittent
- River/Creek
- Water Body

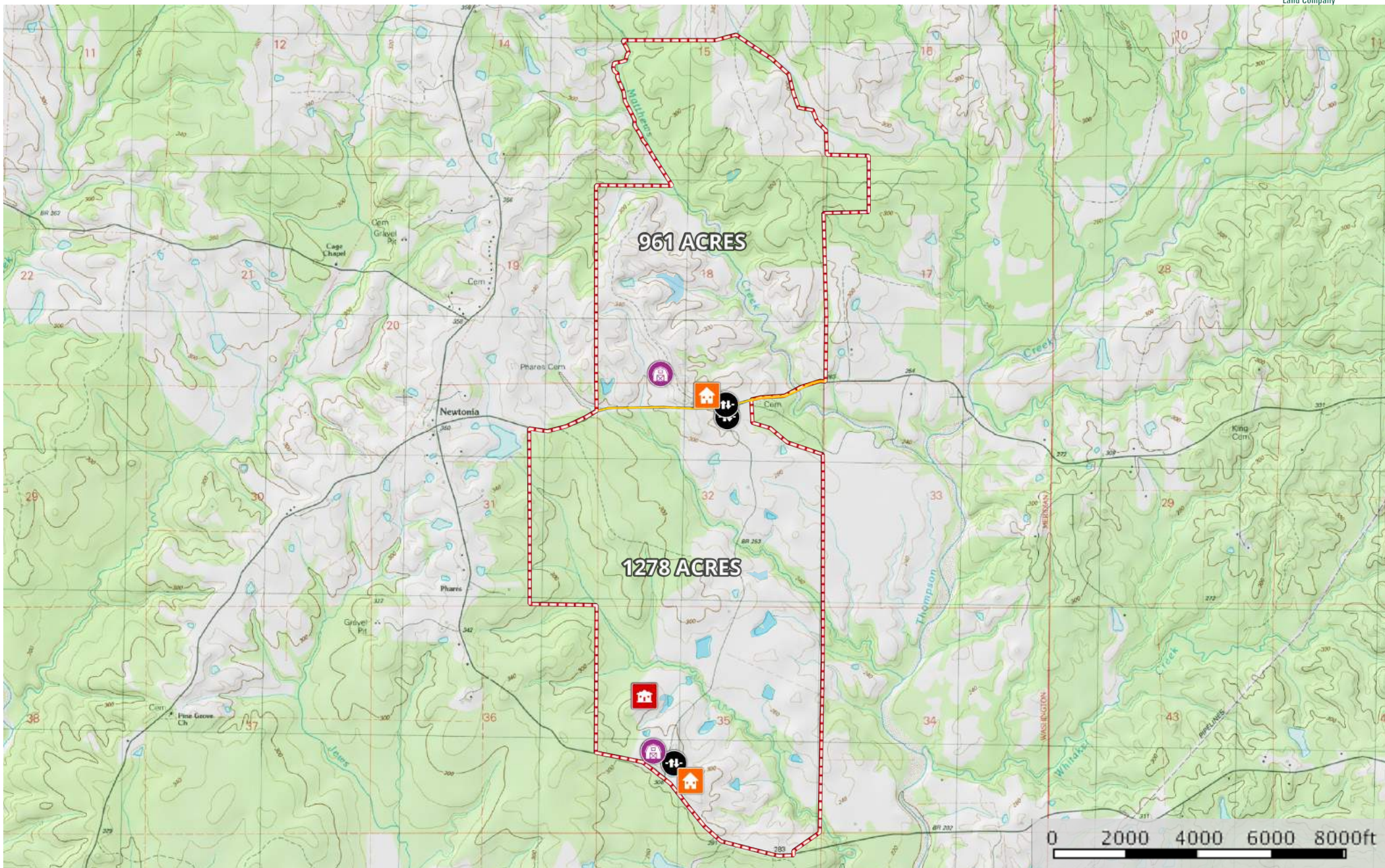
Whitney Ranch - North & South
Wilkinson County, Mississippi, 2239 AC +/-



- House
- Barn
- Main House
- Gate
- Primary Road
- Pond / Tank
- Boundary
- 100 Year Floodplain
- 500 Year Floodplain
- Stream, Intermittent
- River/Creek
- Water Body

Whitney Ranch - North & South

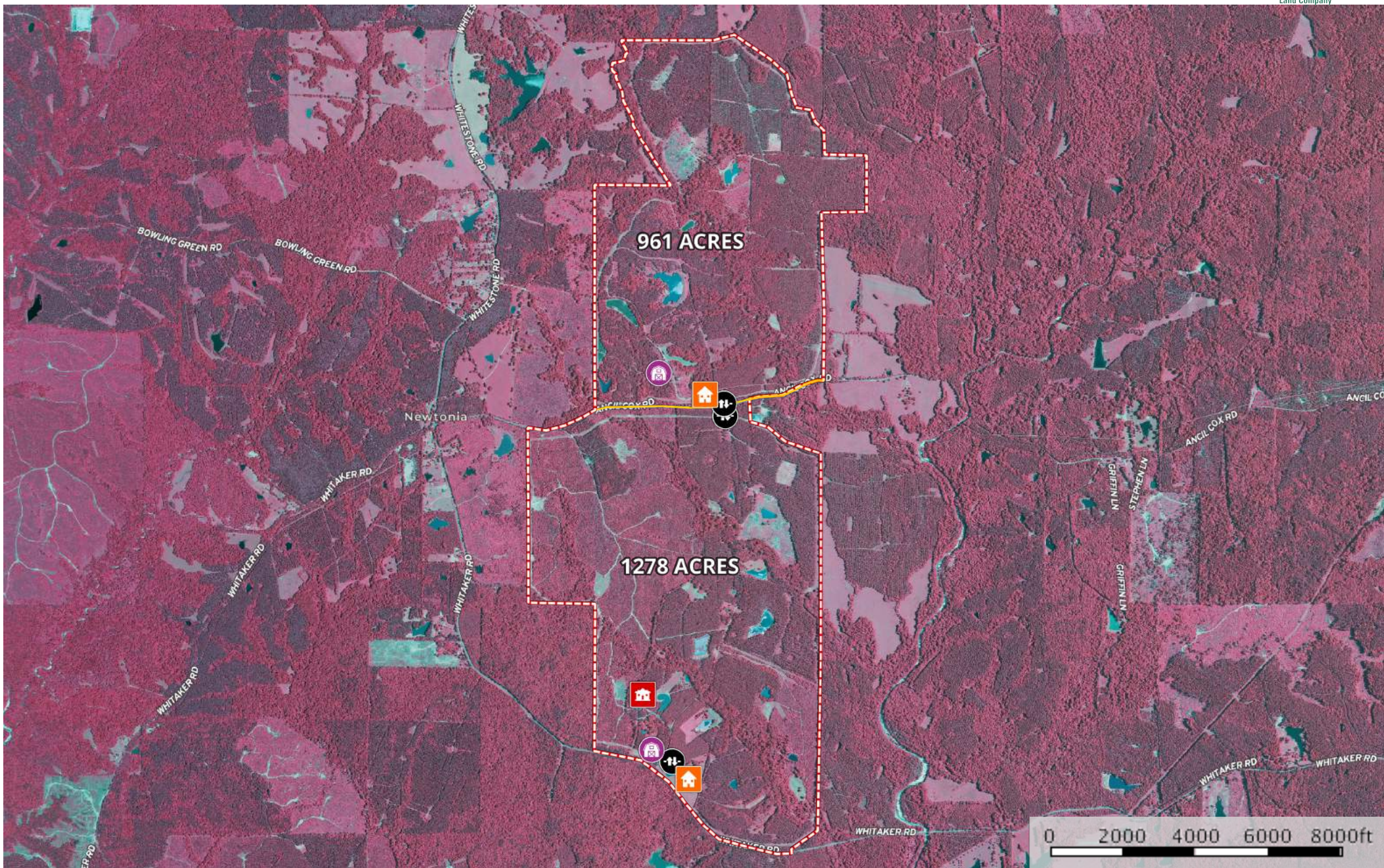
Wilkinson County, Mississippi, 2239 AC +/-



- House
- Barn
- Main House
- Gate
- Primary Road
- Pond / Tank
- Boundary



Whitney Ranch - North & South
Wilkinson County, Mississippi, 2239 AC +/-



- House
- Barn
- Main House
- Gate
- Primary Road
- Pond / Tank
- Boundary