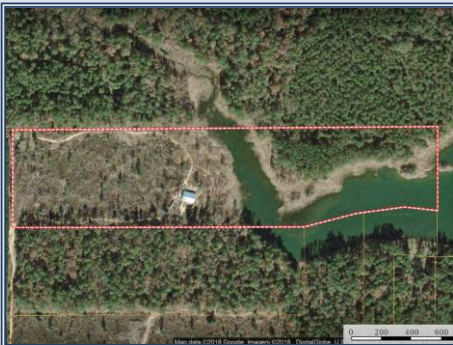




Pike County, MS Cabin overlooking a 40 Acre Lake!! Here's your chance to own a beautiful cabin overlooking the beautiful 40+/- acre Alford Lake in Pike County, MS. The 3 bedroom, 2 bath cabin is 2242 sqft heated and cooled and sits on 28.69+/- acres with frontage on 2 sides of the lake. The cabin is beautiful, built by the owner with meticulous detail. Matching granite counter tops with hardwood floors and travertine limestone tile covering the floors in the bathrooms. The large deck overlooking the lake is the reason you're here. The back porch is looking right down the main body of the 40 acre lake. The lake is super clear and full of bass and bream. The timber has been cut and is growing back in a natural regeneration which is great for deer hunting. The acreage is actually on both sides of the lake. The access is a deeded right of way that dead ends at the cabin offering privacy and seclusion.

1119 Alford Lake Road, Osyka

31.03872, -90.54035 GPS



\$475,000

28.69 Acres
MLS #127854
UC #23042-27854



Kyle Bass
kyle.bass4land@gmail.com
Office: (601) 250-0017
Cell: (601) 248-1448
GibsonRealtyMS.com