

(S51°05'W 544)
 (S83°33'W 324)
 (S67°18'W 700)
 PROPERTY LINE IS ALONG TOP OF
 (S60°33'W 200)
 (S57°04'W 180)
 (N57°21'W 229)
 (S55°00'W 175)
 (S71°48'W 880)
 CAVE MOUNTAIN

24
 100.10 ± Ac.

S25°21'44"E
 3443.64'

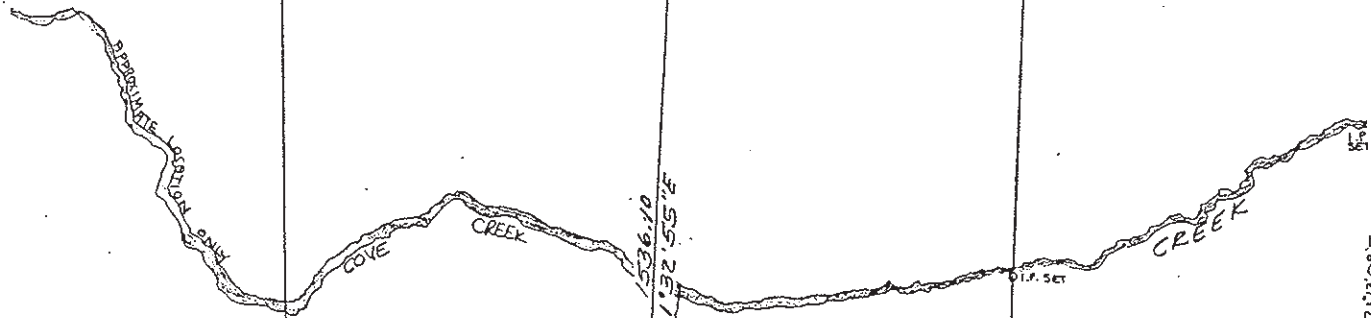
23
 88.11 ± Ac.

L.P. AT EDGE OF WOODS

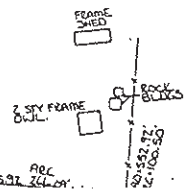
22
 81.32 ± Ac.

S22°26'15"E
 3060.00'

21
 78.21 ± Ac.



S25°02'02"E
 1045.80'



SPRING
 POST

S21°32'55"E
 536.10'

S22°04'02"E
 676.35'

POST

S27°27'30"E
 311.45'

S27°27'30"E
 311.45'

S27°27'30"E
 311.45'

S27°27'30"E
 311.45'

S27°27'30"E
 311.45'

S27°27'30"E
 311.45'

S27°27'30"E
 311.45'

S27°27'30"E
 311.45'

S27°27'30"E
 311.45'

S27°27'30"E
 311.45'

30'

30'

30'

30'

30'

30'

30'

30'

30'

30'