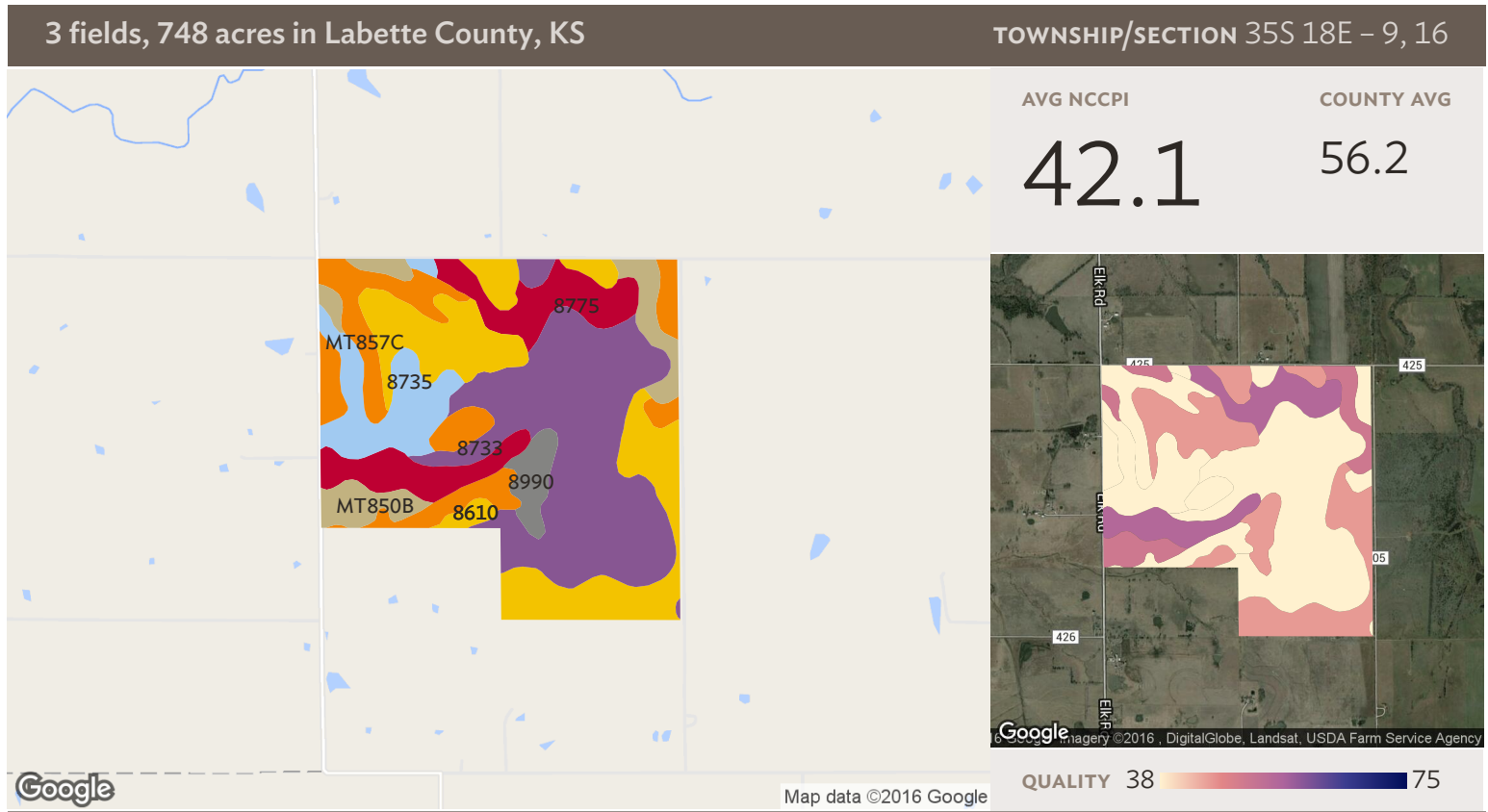


Source: NRCS Soil Survey

## All fields

748 ac

SOIL CODE	SOIL DESCRIPTION	ACRES	PERCENTAGE OF FIELD	SOIL CLASS	NCCPI
8610	Apperson silty clay loam, 1 to 3 percent slopes	258.82	34.6%	3	45.5
8733	Eram silty clay loam, 1 to 3 percent slopes	152.51	20.4%	3	36.2
MT857C	Wagstaff-Shidler complex, 1 to 8 percent slopes	130.79	17.5%	3	35.6
8735	Eram silty clay loam, 3 to 7 percent slopes	69.69	9.3%	4	36.5
8775	Kenoma silt loam, 1 to 3 percent slopes	67.76	9.1%	3	55.4
MT850B	Wagstaff silty clay loam, 1 to 3 percent slopes	40.25	5.4%	3	50.8
8990	Zaar silty clay, 0 to 1 percent slopes	27.80	3.7%	3	45.3
<b>747.63</b>					<b>42.2</b>

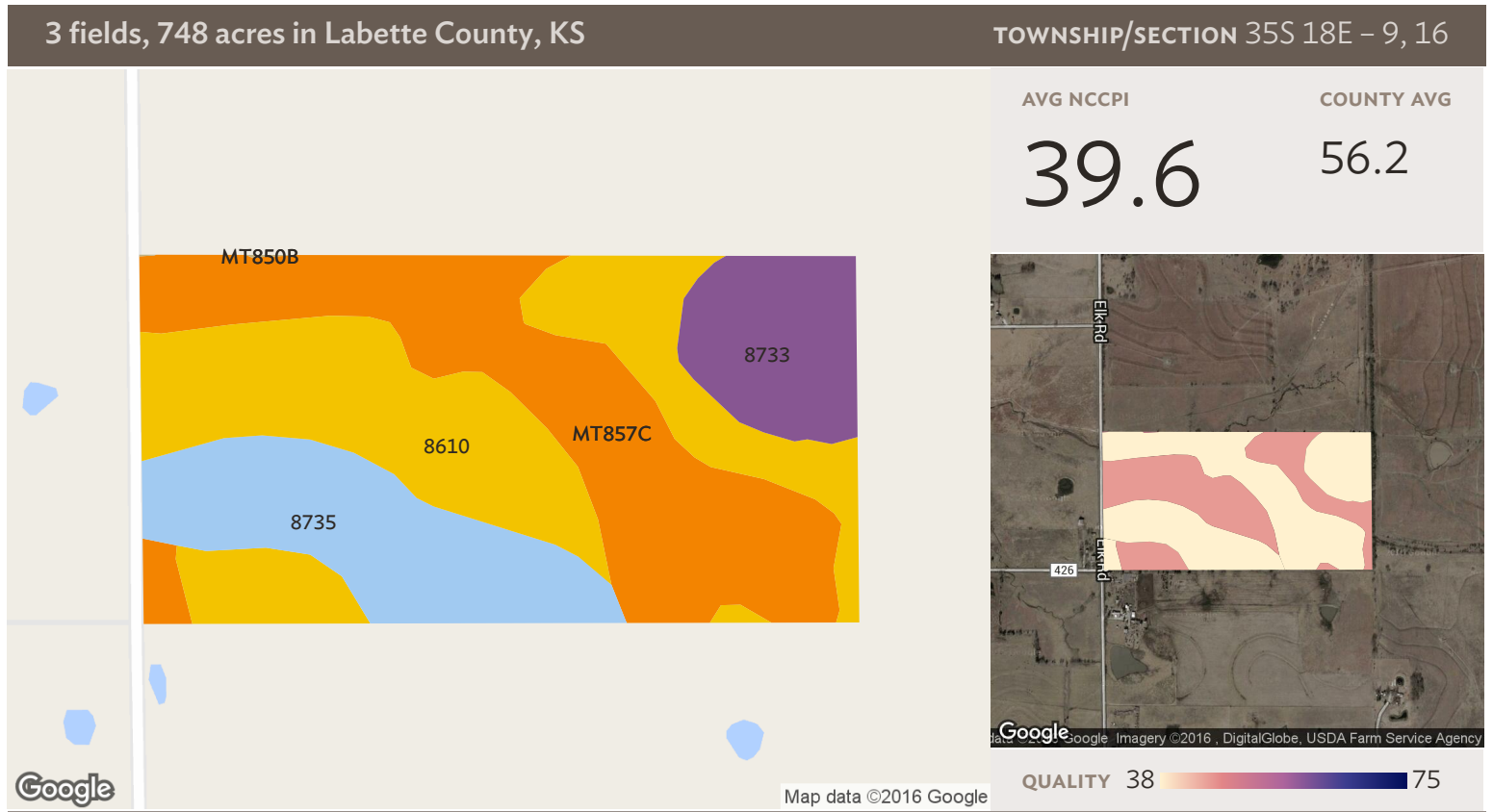


## Field 1

Source: NRCS Soil Survey

548 ac

SOIL CODE	SOIL DESCRIPTION	ACRES	PERCENTAGE OF FIELD	SOIL CLASS	NCCPI
8733	Eram silty clay loam, 1 to 3 percent slopes	142.90	26.1%	3	36.2
8610	Apperson silty clay loam, 1 to 3 percent slopes	132.46	24.2%	3	45.5
MT857C	Wagstaff-Shidler complex, 1 to 8 percent slopes	101.13	18.4%	3	35.6
8775	Kenoma silt loam, 1 to 3 percent slopes	67.76	12.4%	3	55.4
8735	Eram silty clay loam, 3 to 7 percent slopes	48.32	8.8%	4	36.5
MT850B	Wagstaff silty clay loam, 1 to 3 percent slopes	40.11	7.3%	3	50.8
8990	Zaar silty clay, 0 to 1 percent slopes	15.47	2.8%	3	45.3
<b>548.15</b>					<b>42.1</b>

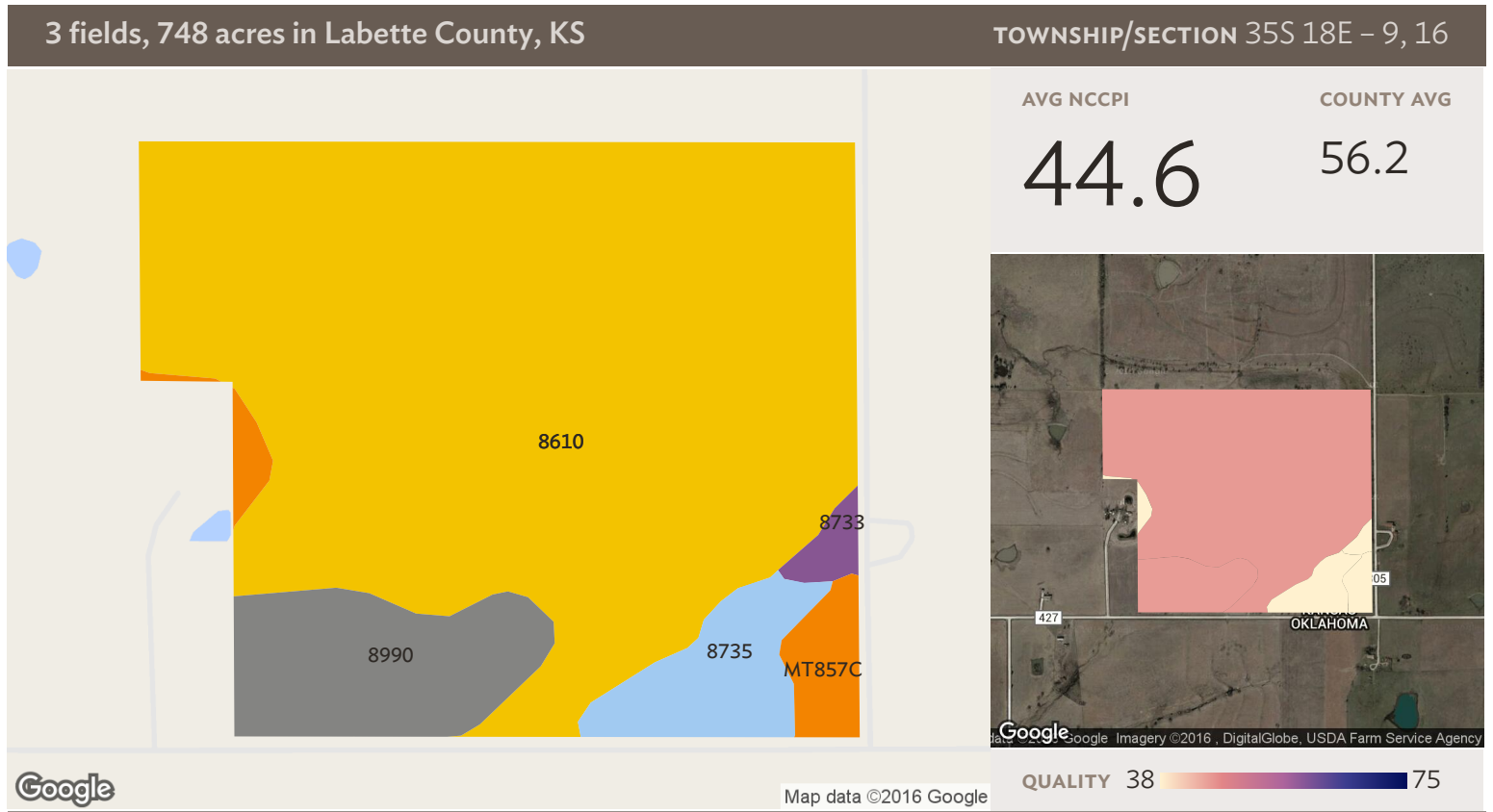


Source: NRCS Soil Survey

## Field 2

80 ac

SOIL CODE	SOIL DESCRIPTION	ACRES	PERCENTAGE OF FIELD	SOIL CLASS	NCCPI
8610	Apperson silty clay loam, 1 to 3 percent slopes	30.16	37.7%	3	45.5
MT857C	Wagstaff-Shidler complex, 1 to 8 percent slopes	26.07	32.6%	3	35.6
8735	Eram silty clay loam, 3 to 7 percent slopes	14.99	18.7%	4	36.5
8733	Eram silty clay loam, 1 to 3 percent slopes	8.60	10.8%	3	36.2
MT850B	Wagstaff silty clay loam, 1 to 3 percent slopes	0.14	0.2%	3	50.8
<b>79.96</b>					<b>39.6</b>



## Field 3

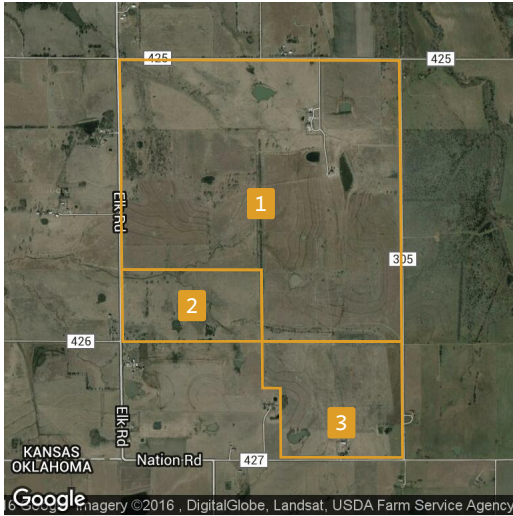
Source: NRCS Soil Survey

120 ac

SOIL CODE	SOIL DESCRIPTION	ACRES	PERCENTAGE OF FIELD	SOIL CLASS	NCCPI
■ 8610	Apperson silty clay loam, 1 to 3 percent slopes	96.20	80.5%	3	45.5
■ 8990	Zaar silty clay, 0 to 1 percent slopes	12.33	10.3%	3	45.3
■ 8735	Eram silty clay loam, 3 to 7 percent slopes	6.38	5.3%	4	36.5
■ MT857C	Wagstaff-Shidler complex, 1 to 8 percent slopes	3.59	3.0%	3	35.6
■ 8733	Eram silty clay loam, 1 to 3 percent slopes	1.01	0.8%	3	36.2
<b>119.52</b>					<b>44.6</b>

3 fields, 748 acres in Labette County, KS

TOWNSHIP/SECTION 35S 18E - 9, 16



## All fields

748 ac



Grass/Pasture	96.4%	96.2%	95.9%	96.2%	96.5%
Other	3.6%	3.8%	4.1%	3.8%	3.5%

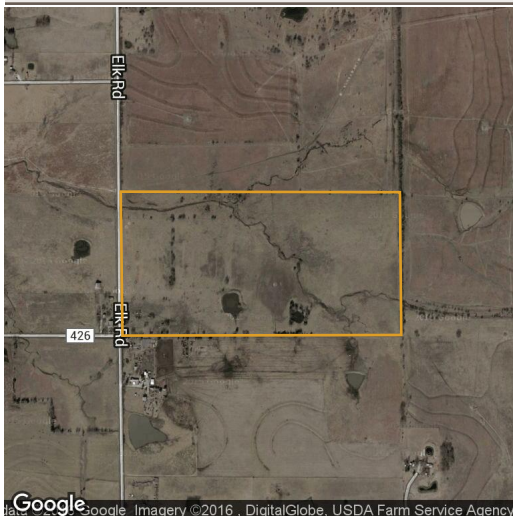


## Field 1

548 ac

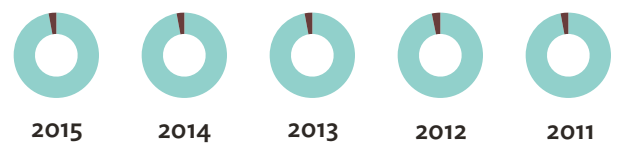


Grass/Pasture	95.6%	95.5%	95.2%	95.3%	95.7%
Other	4.4%	4.5%	4.8%	4.7%	4.3%



## Field 2

80 ac



Grass/Pasture	97.1%	97.1%	97.1%	96.8%	97.1%
Other	2.9%	2.9%	2.9%	3.2%	2.9%



3 fields, 748 acres in Labette County, KS

TOWNSHIP/SECTION 35S 18E – 9, 16



Field 3

120 ac






	2015	2014	2013	2012	2011
Grass/Pasture	100.0%	99.3%	98.0%	99.8%	99.6%
Other	–	0.7%	2.0%	0.2%	0.4%

Source: NASS Cropland Data Layer

3 fields, 748 acres in Labette County, KS

TOWNSHIP/SECTION 35S 18E – 9, 16

## Labette County, KS

FIELD	ACRES	TOWNSHIP/SECTION/APN	OWNER (LAST UPDATED)
1 	548.15	35S 18E – 9 APN: 242-09-0-00-00-001.00-0	N/A (02/28/2013)
2 	79.96	35S 18E – 9 APN: 242-09-0-00-00-002.00-0	N/A (02/28/2013)
3 	119.52	35S 18E – 9, 16 APN: 245-16-0-00-00-001.00-0	N/A (02/28/2013)
<b>747.63</b>			

3 fields, 748 acres in Labette County, KS

TOWNSHIP/SECTION 35S 18E - 9, 16

