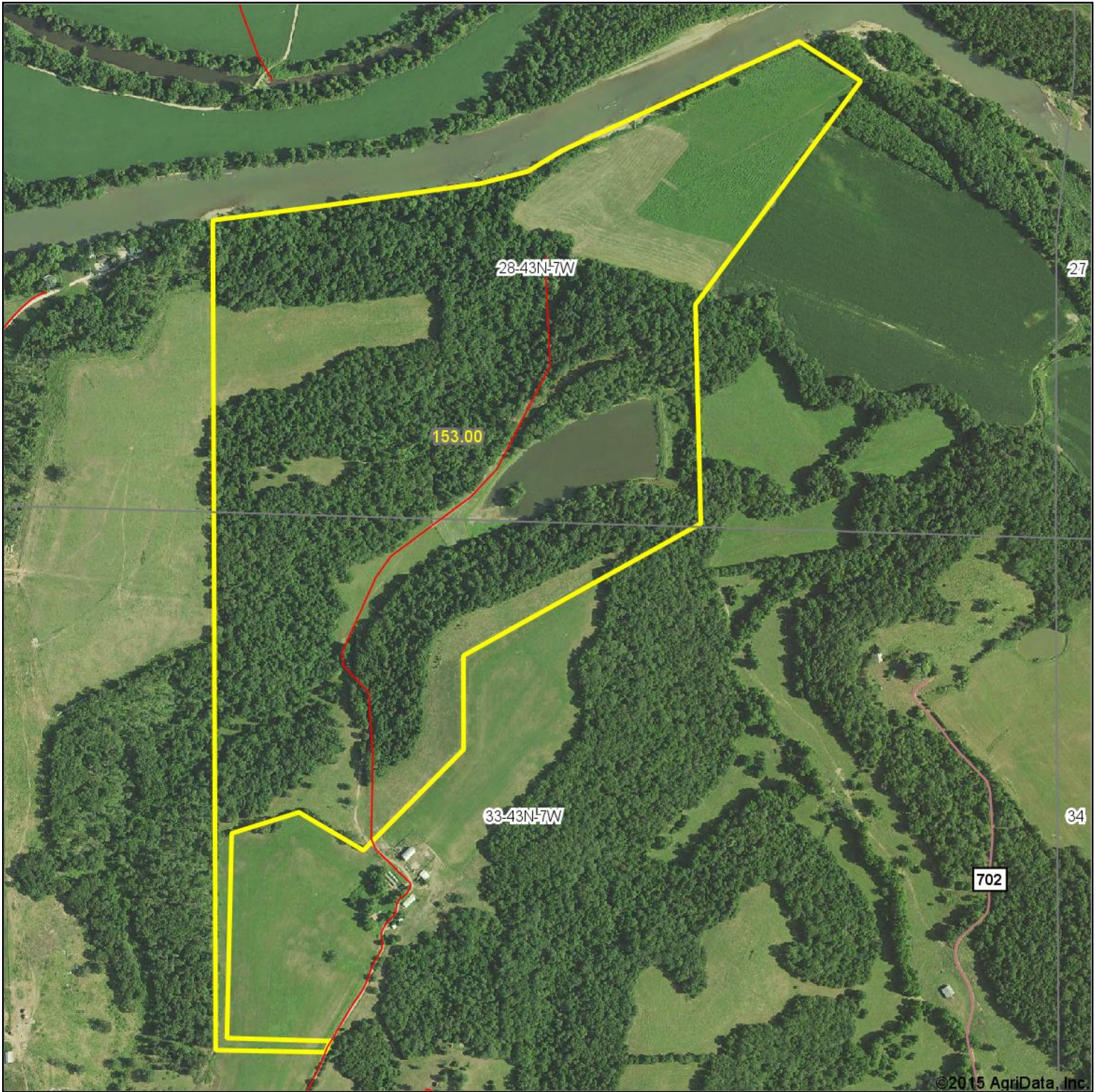


Aerial Map



©2015 AgriData, Inc.



iAuctionandRealty.com

Maps Provided By:

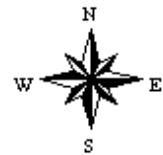


© AgriData, Inc. 2015 www.AgriDataInc.com

map center: 38.438945, -91.710018

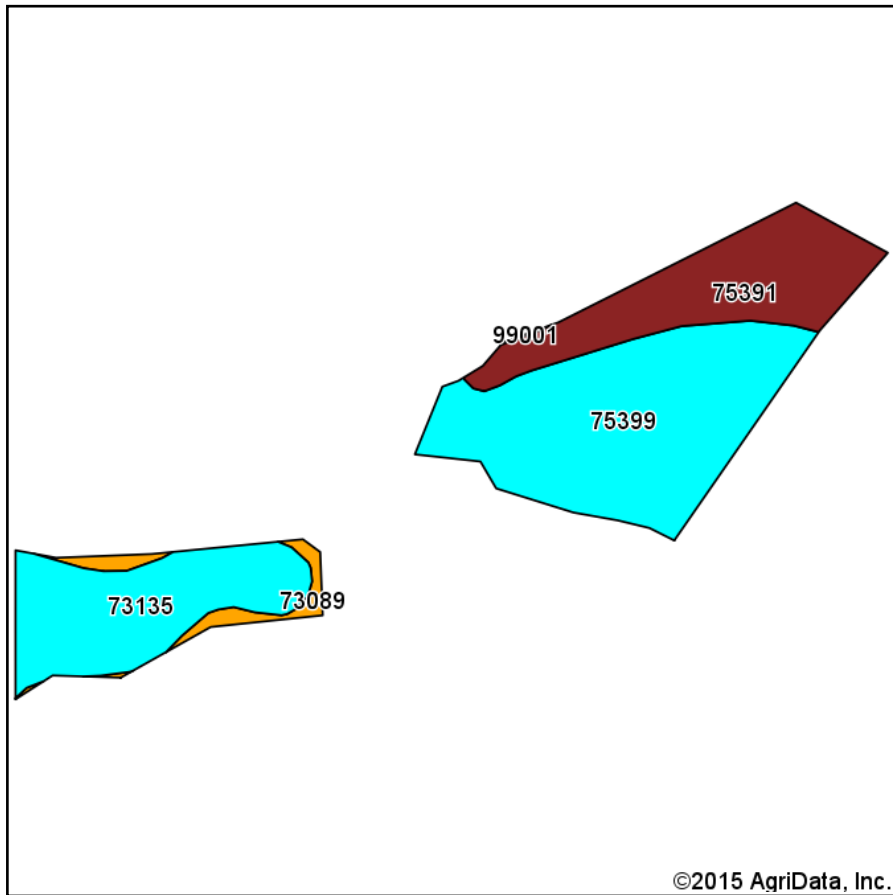


33-43N-7W
Osage County
Missouri



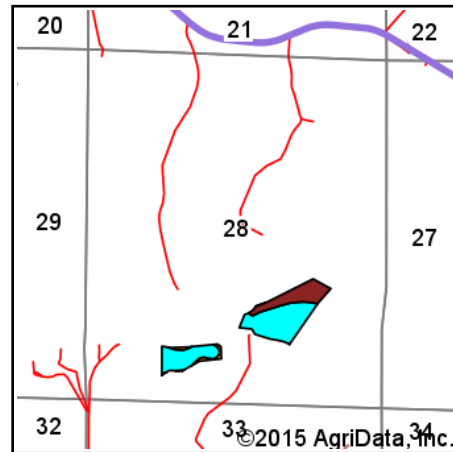
11/23/2015

Soil Map



Soils data provided by USDA and NRCS.

©2015 AgriData, Inc.

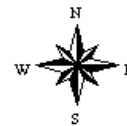


State: **Missouri**
 County: **Osage**
 Location: **33-43N-7W**
 Township: **Jefferson**
 Acres: **32.1**
 Date: **11/23/2015**



iAuctionandRealty.com

Maps Provided By:



Area Symbol: MO151, Soil Area Version: 15

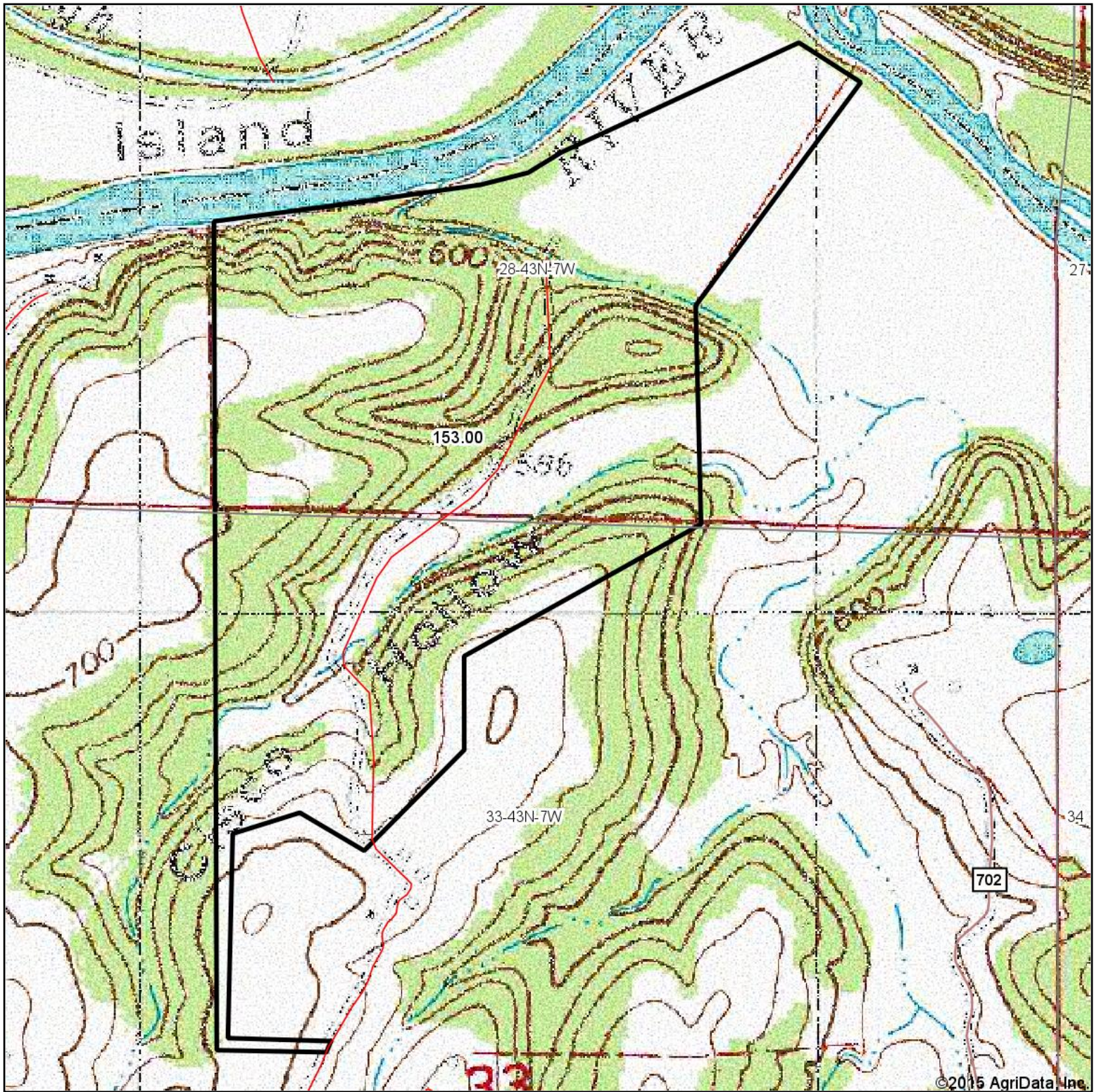
| Code | Soil Description | Acres | Percent of field | Non-Irr Class Legend | Non-Irr Class *c | Corn | Soybeans | Winter wheat | Grain sorghum |
|-------------------------|---|-------|------------------|----------------------|------------------|----------|------------|--------------|---------------|
| 75399 | Jamesfin silt loam, 0 to 3 percent slopes, frequently flooded | 14.89 | 46.4% | | IIIw | | | | |
| 75391 | Poosumtrot fine sandy loam, 0 to 2 percent slopes, occasionally flooded | 8.02 | 25.0% | | IIw | | | | |
| 73135 | Union silt loam, 3 to 8 percent slopes | 7.97 | 24.8% | | IIIe | 8 | 3 | 3 | 7 |
| 73089 | Rueter very gravelly silt loam, 15 to 35 percent slopes, very stony | 1.22 | 3.8% | | VIe | | | | |
| Weighted Average | | | | | | 2 | 0.7 | 0.7 | 1.7 |

Area Symbol: MO151, Soil Area Version: 15

*c: Using Capabilities Class Dominant Condition Aggregation Method

Soils data provided by USDA and NRCS.

Topography Map



map center: 38.438945, -91.710018

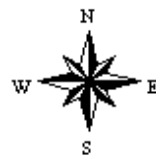
0ft 755ft 1509ft



iAuctionandRealty.com
Maps Provided By:



33-43N-7W
Osage County
Missouri



11/23/2015