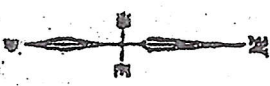


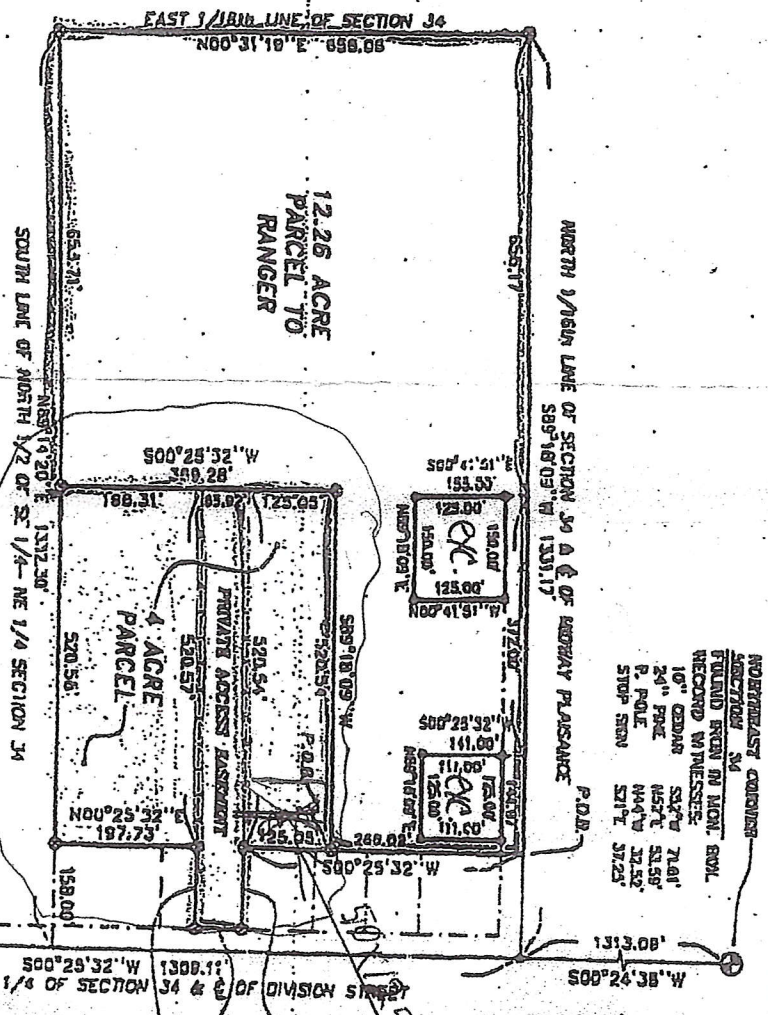
CERTIFICATE OF SURVEY

PART OF THE NORTH 1/2 OF THE SOUTHEAST 1/4 OF THE
NORTHEAST 1/4, SECTION 34, TOWNSHIP 42 NORTH, RANGE
4 EAST, DETOUR VILLAGE, CHIPPEWA COUNTY, MICHIGAN.

- LEGEND**
- (R) RECORDED DISTANCE
 - (M) MEASURED DISTANCE
 - (C) COMPUTED DISTANCE
 - FOUND CORNER
 - ⊙ FOUND CONCRETE MONUMENT
 - ⊙ SET 1/2" IRON W/ CAP NO. 2025



*See Owners Plus
The Story of Michigan
Agrees retained by
Sellers*



- NORTHEAST CORNER**
- FOUND FROM N. MON. BOWL
 - RECORD WITNESSES:
 - 10" CEDAR
 - 24" POLE
 - R. POLE
 - STOP SIGN
- SOUTH**
- 24" CEDAR
 - 12" POLE
 - STOP SIGN

- EAST 1/4 CORNER**
- FOUND FROM PIN IN ROAD.
 - RECORD WITNESSES:
 - 10" CEDAR
 - 7" ASPEN
 - 12" CEDAR
 - R. POLE



LARRY R. ROGERS, L.S. 29251

IRVEY FOR:
NGER-**FUSSMAN**

TE: 04 NOV 2005



SCALE: 1" = 200'		
DRAWN	NPG	SHEET 2 OF 4
COMPUTED	LRR	JOB 5495-00B