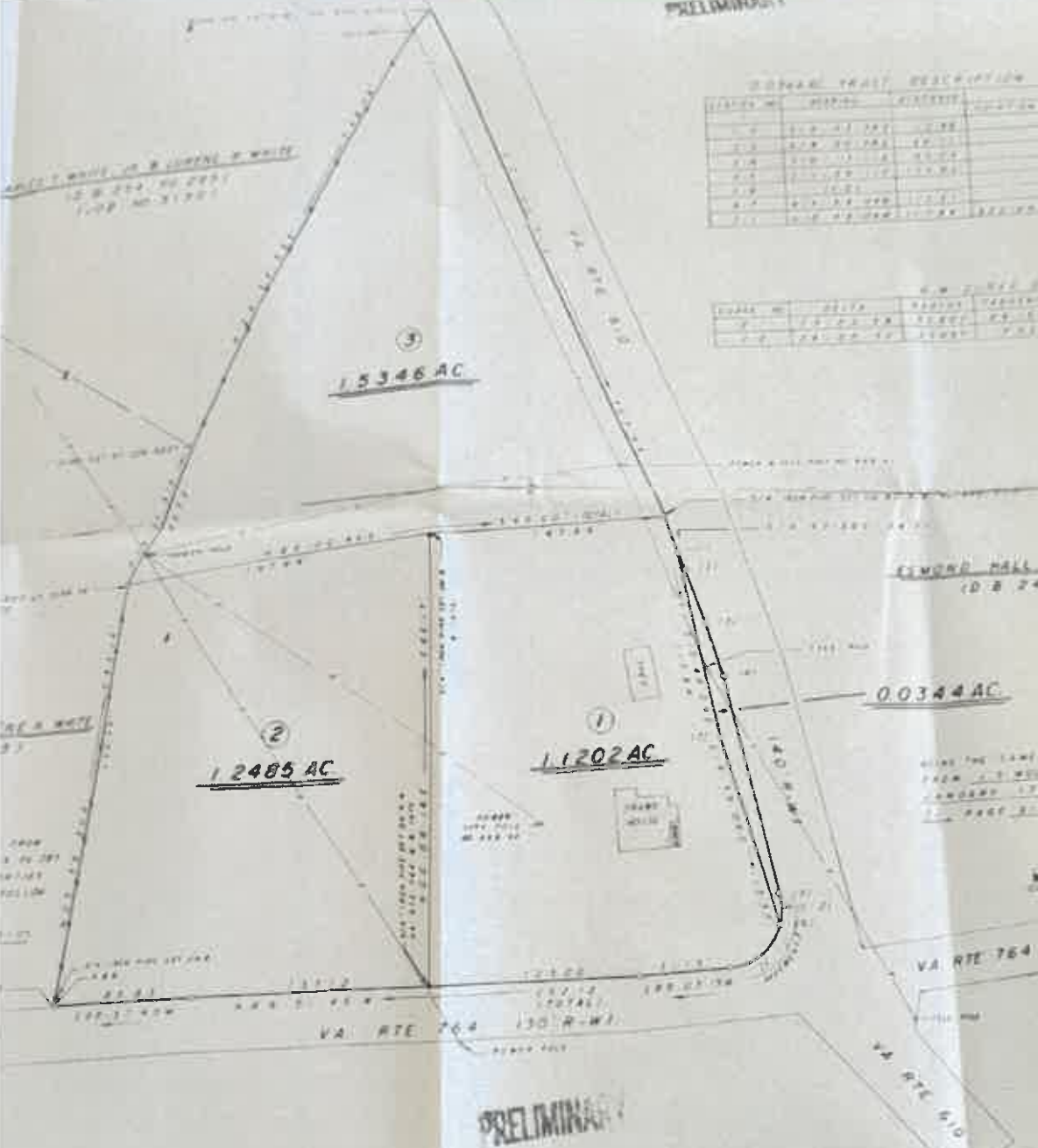


PRELIMINARY



ADJACENT TRACT DESCRIPTION

| TRACT NO. | OWNER | ACRES | REMARKS |
|-----------|-------|-------|---------|
| 1         | ...   | ...   | ...     |
| 2         | ...   | ...   | ...     |
| 3         | ...   | ...   | ...     |
| 4         | ...   | ...   | ...     |
| 5         | ...   | ...   | ...     |
| 6         | ...   | ...   | ...     |
| 7         | ...   | ...   | ...     |

N.W. CORNER DATA

| TRACT NO. | BEARING | DISTANCE | REMARKS |
|-----------|---------|----------|---------|
| 1         | ...     | ...      | ...     |
| 2         | ...     | ...      | ...     |
| 3         | ...     | ...      | ...     |

EDWARD HALL & BONNIE HALL  
 (D.B. 246, PG. 400)



HAVING THE SAME PROPERTY CONVEYED TO SURVIVOR HEREFROM BY WILL & MORTGAGE DEED BY ROYAL GATES LANDWRIGHT 17 1878 RECORDED IN BOOK 800 P. 100 PART 21. SEE D.B. 21, PAGE 322.



TO BE CONVEYED TO  
 CHARLES HICKEY  
 FRANCES I. HICKEY

BLUE RIDGE REGISTERIAL OFFICE  
 PATRICK COUNTY, VIRGINIA  
 DAVID B. HICKEY, CLERK  
 HICKORYVILLE, VIRGINIA

PRELIMINARY