

Field Report

Minnesota • Steele County

Page / 08 • 106N / 19W

155.4 acres

Generated: 6/10/2026

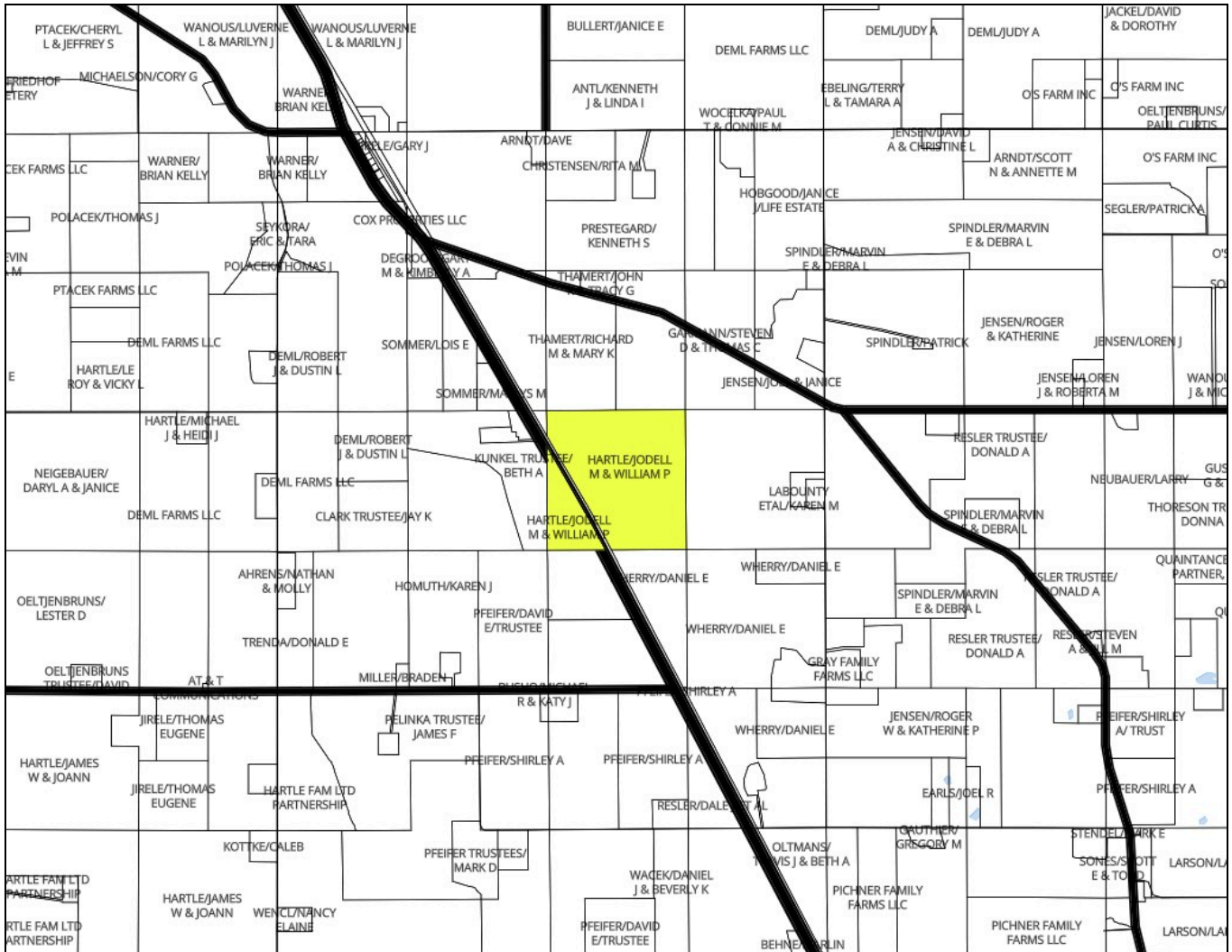
Plat Map



106N

Aurora

19W



Minnesota / Steele County
44.0045, -93.1413
Aurora / 08
106N / 19W
155.4 acres

Parcel Detail (1 of 1)



HARTLE/JODELL M & WILLIAM P

IDENTIFICATION

Parcel Number 04-008-4000
Owner HARTLE/JODELL M & WILLIAM P
Mailing Address 2901 SE 68TH ST
OWATONNA, MN 55060-6552
County steele
State MN

LOCATION

Lat / Lon 44.004542, -93.141339

LEGAL

Description NW1/4 EX.RR

PROPERTY CHARACTERISTICS

Property Use AGRICULTURE
Acreage 155.39

TAX & VALUATION

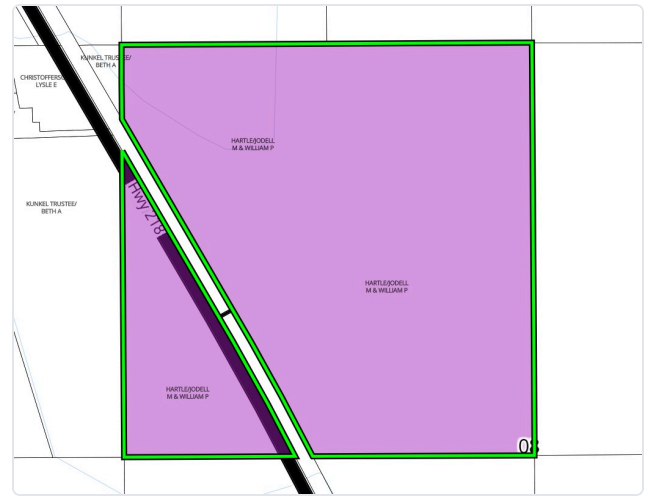
Assessed Value \$1,727,400

SALES HISTORY

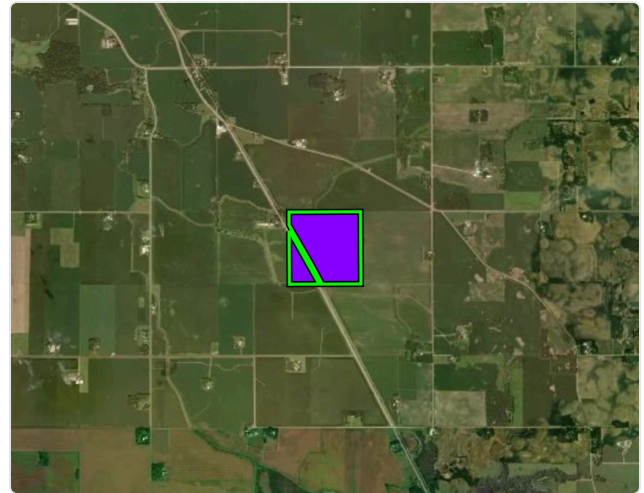
Last Sale Date 7/26/2021
Sale Price \$1,007,500

Data Source: Regrid (Landgrid)

INDIVIDUAL PARCEL



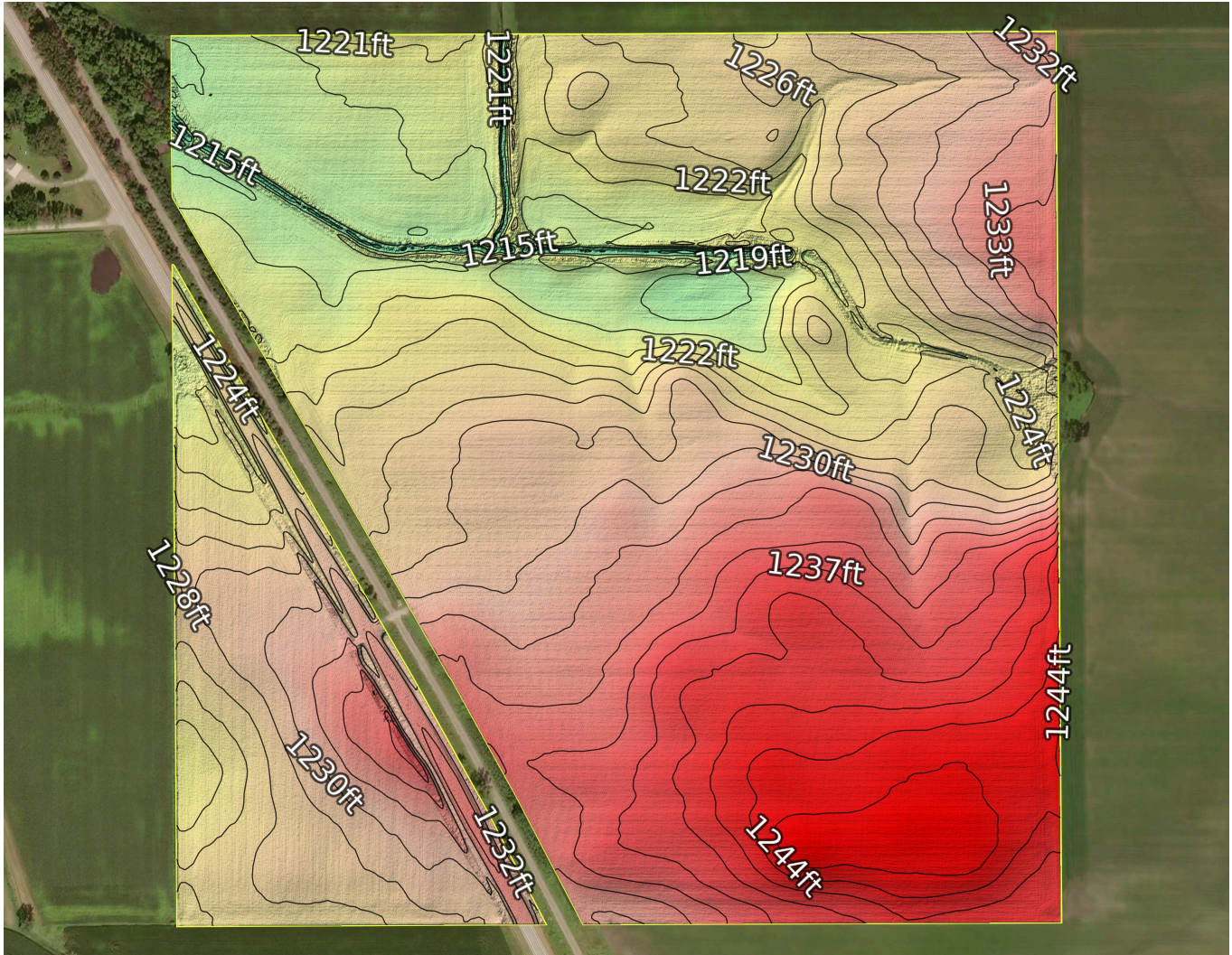
SATELLITE CONTEXT



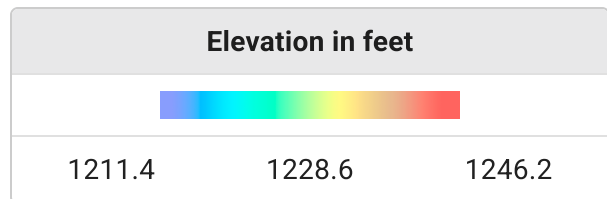
Field boundary Overall boundary This parcel

Minnesota / Steele County
44.0045, -93.1413
Aurora / 08
106N / 19W
155.4 acres

Topography



Minimum Elevation	1211.4 feet
Maximum Elevation	1246.2 feet
Mean Elevation	1228.6 feet
Standard Deviation	7.7 feet
Elevation Range	34.9 feet
Contour Interval	20 feet

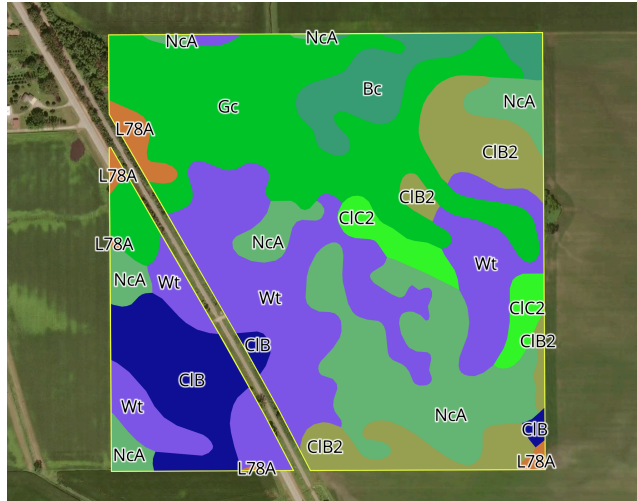


Data Source: AWS Open Data Registry - USGS 3DEP

Minnesota / Steele County
 44.0045, -93.1413
 Aurora / 08
 106N / 19W
 155.4 acres

TERRAIN
 Generated: 6/10/2026

Soil Map



Soil Code	Soil Description	Acres	Drainage Class	CPI	WT Depth
Wt	Webster clay loam, 0 to 2 percent slopes	40.9	Poorly drained	93	N/A
Gc	Glencoe clay loam, 0 to 1 percent slopes	40.6	Very poorly drained	86	N/A
NcA	Nicollet clay loam, 1 to 3 percent slopes	29.4	Somewhat poorly drained	99	17.7
CIB2	Clarion loam, 2 to 6 percent slopes, moderately eroded	15.1	Moderately well drained	95	35.4
CIB	Clarion loam, 2 to 6 percent slopes	12.9	Moderately well drained	95	35.4
Bc	Biscay clay loam, 0 to 2 percent slopes	8.6	Poorly drained	70	3.9
CIC2	Clarion loam, 6 to 10 percent slopes, moderately eroded	5.3	Well drained	92	55.1
L78A	Canisteo clay loam, 0 to 2 percent slopes	2.5	Poorly drained	93	N/A

Total Acres	155.4
CPI Weighted Average	91.4



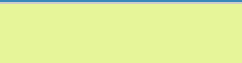
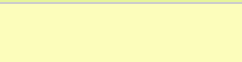

Data Source: NRCS Soil Survey

Minnesota / Steele County
 44.0045, -93.1413
 Aurora / 08
 106N / 19W
 155.4 acres

TERRAIN
 Generated: 6/10/2026

Drainage Classification



Key	Drainage Class	Acres(%)
	Poorly drained	33.00%
	Very poorly drained	26.00%
	Somewhat poorly drained	19.00%
	Moderately well drained	18.00%
	Well drained	3.00%


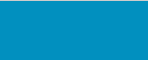

Data Source: NRCS Soil Survey

Minnesota / Steele County
 44.0045, -93.1413
 Aurora / 08
 106N / 19W
 155.4 acres

TERRAIN
 Generated: 6/10/2026

Wetland



Key	Classification Code	Type	Acres
	PEM1C	Freshwater Emergent Wetland	0.62
	R5UBFx	Riverine	0.51
	PSS1A	Freshwater Forested/Shrub Wetland	0.21
Total			1.34

Data Source: US Fish & Wildlife Service - National Wetland Inventory

Wetland data shown is for planning purposes only; please contact your local USDA NRCS office for an official wetland determination.

Minnesota / Steele County
 44.0045, -93.1413
 Aurora / 08
 106N / 19W
 155.4 acres



Data Source: 2008 FSA version of CLU boundaries

[Driving Directions](#)

44.0045, -93.1413



Minnesota / Steele County
44.0045, -93.1413
Aurora / 08
106N / 19W
155.4 acres