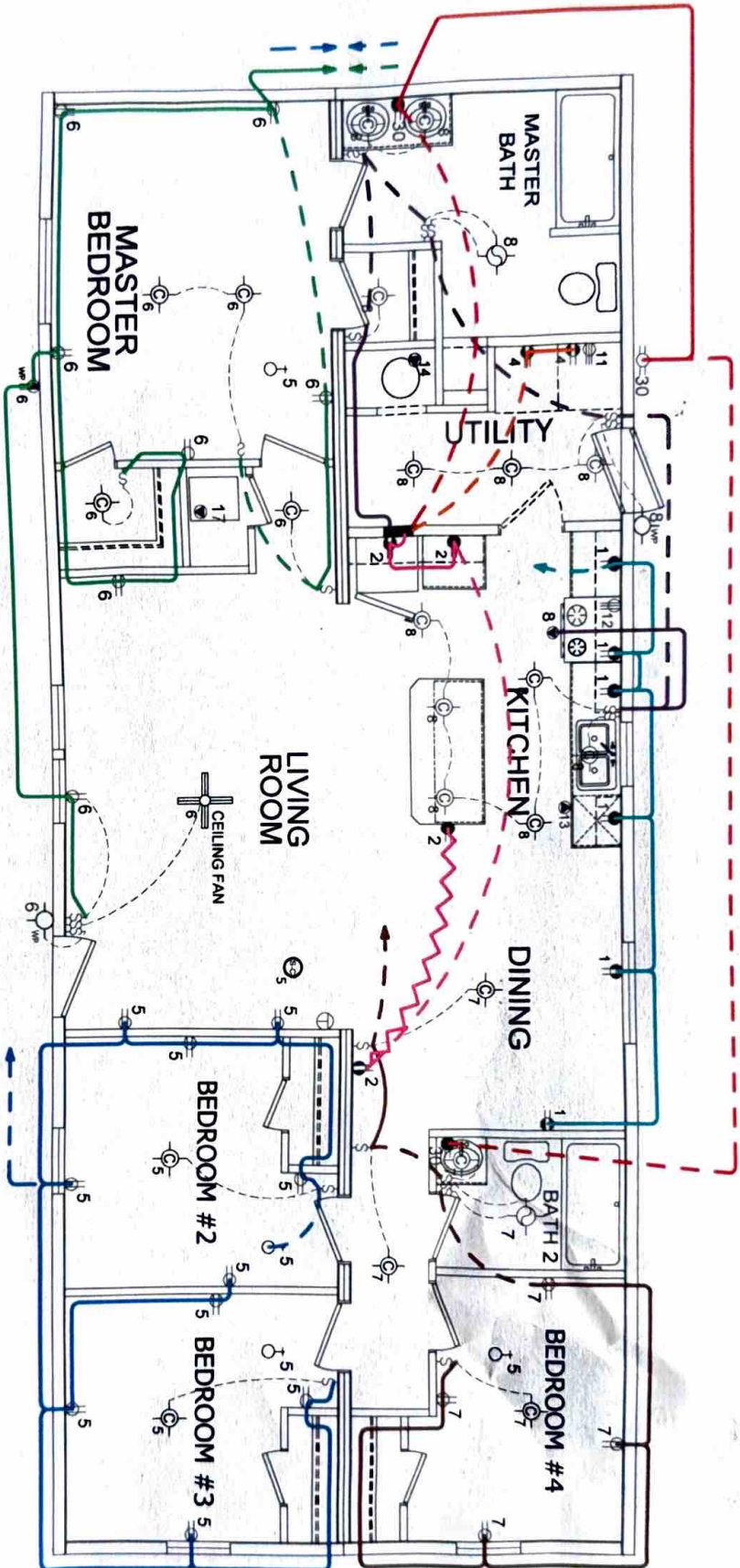


B 949



--- Wire in ceiling
 --- Wire in wall
 --- Wire in floor

		APPROVER'S SEAL	
308 SHERIDAN DRIVE, TOPEKA, IN 46571		MODIFICATIONS	
PROPRIETARY AND CONFIDENTIAL THESE DRAWINGS AND SPECIFICATIONS ARE ORIGINAL PROPRIETARY AND CONFIDENTIAL MATERIALS OF CHAMPION COPYRIGHT © 1976-2008 BY CHAMPION		1 ADDED 52" LAV IN MBATH	JR 11-16-18
MODEL: 2460 CA1 3BD 2BATH		TITLE: FLOOR PLAN	
DRAWN BY: JDRAKE		DATE: 06-08-16	
SCALE: 1/8" = 1'-0"		SHEET: AP-101	
REV. A		REV. A	



CHAMPION HOME BUILDERS, INC.
112 Topeka Indiana
Consumer Insulation Information

This: B603761AB
Serial Number

Contains the following Insulation Specifications:

Table with 3 columns: LOCATION, TYPE OF INSULATION (cellulose, fiberglass, etc.), THICKNESS / "R" VALUE. Rows include FLOOR, EXTERIOR WALLS, and CEILING with their respective insulation types and R-values.

This insulation information was furnished by the manufacturer of the insulation and is disclosed in compliance with the Federal Trade Commission Rule, Labeling and Advertising of Home Insulation, 16 CFR Section 460.16, et seq. Savings vary. Higher "R" values mean greater insulating power.

Normal construction practices and production variations such as the installation of wiring, plumbing and other systems and equipment, may cause insulation to become compressed with a resultant reduction in "R" values in those compressed areas. When the insulation is compressed over a significant percentage of its installed area, the approximate "R" value has been determined in accordance with accepted engineering practices. Moreover, due to the particular shape of any given roof, there may be certain areas (such as eaves) where it is not possible to achieve the same "R" values as the rest of the roof system. Note for HUD homes: Total insulation package complies with HUD requirements.

I hereby acknowledge receiving this form which is an addendum to my sales contract. CAUTION: Insulation may have been displaced or lost in transit or handling of home. To the extent possible, please re-verify insulation amounts by visual inspections prior to signing. "R" values are certified by the manufacturer of the insulation for thicknesses installed in this home. The "R" value of this insulation varies depending on how much it is compressed during installation. Note for HUD homes: Overall "R" values for insulation are determined in accordance with the HUD Code, 24 C.F.R. §3280.508, et seq.

Buyer Date

Co-Buyer Date

Retailer / Manager Date