

**FOR  
SALE**

**\$395,000**

**141 N Milwaukie Ave, Hines, OR 97738**

Website Info



**Presented By**

Jake Blackburn & Curt Blackburn  
United Country Jett Blackburn Real Estate  
707 Ponderosa Village, Burns, OR 97720  
(J) (541) 413-5774 | (C) (541) 413-5777  
jake@jettblackburn.com | curt@jettblackburn.com  
www.jettblackburn.com



**ADDRESS:** 141 N Milwaukie, Hines, OR 97738  
**LEGAL:** 23S30E24-CB-02300  
**TAXES:** \$3,654.22 – Per County Records  
**FINANCING:** Cash or Bank Financing  
**YEAR BUILT:** 1993  
**SQ. FT.:** Main Level: 2,844 sq ft (+/-) Loft: 864 sq ft (+/-) – Per County Records  
**ACREAGE:** .36 acres  
**HEAT SOURCE:** Woodstove, Electric F/A Furnace & Heat Pump  
**BEDROOMS:** 5 Bedrooms  
**BATHROOMS:** 4 Bathrooms  
**APPLIANCES:** Refrigerator, BI Dishwasher, Range, Washer, Dryer  
**GARAGE:** Attached Double Car Garage – 846 Sq.Ft.  
**PRICE:** \$395,000.00

**Presented By:**



**Jake Blackburn**  
(O) (541)413-5660  
(C) (541)-413-5774  
jake@jettblackburn.com



**Curt Blackburn**  
(O) (541)413-5660  
(C) (541)-413-5777  
curt@jettblackburn.com



This spacious Eastern Oregon home was previously operated as a care facility and offers an expansive floor plan featuring 5 bedrooms and 4 bathrooms. Conveniently located just a couple blocks off Highway 20, the property sits near Valley Golf Course and Hines Middle School, providing easy access to local amenities while maintaining a comfortable residential setting.

Situated on a generous .36 acre lot, the property features mature trees, a large grassy yard, concrete driveway and multiple outdoor living spaces. The exterior showcases board and batten style siding, accented with brick and shake details on the face of the house, creating a warm and inviting appearance. Additional exterior features include a metal roof, gutters, concrete covered walkways, double car garage, single-car garage, and a heat pump F/A furnace with both air conditioning and heating. A spacious patio extends off the master suite on the north side of the home, while a private BBQ area tucked behind the garage private space for entertaining or relaxing outdoors.

Inside, the home offers approximately 2,844 square feet on the main level, along with an additional 864+/- square foot loft area. Flooring throughout includes a blend of carpet, hardwood, laminate, and tile. The front entry opens into a welcoming family room, with the kitchen, dining area, and second family room all conveniently connected .

The kitchen features a U-shaped layout with ample counter space, cabinetry, and bar seating that overlooks the dining area. Nearby, the second family room includes a fireplace, access to the loft space, and a nearby  $\frac{3}{4}$  bathroom, creating a flexible living area with plenty of room for gatherings.

A hallway leads to a full bathroom, laundry room, and two bedrooms. Continuing through the home, an additional hallway passes an office space, another bedroom, a second full bathroom, and the spacious primary suite. The primary suite features dual closets, a  $\frac{3}{4}$  bathroom with double vanity, and sliding glass door access to the back patio.

With its large floor plan, multiple living areas, generous lot size, and versatile layout, this property offers exceptional potential for a large household, multi-generational living, or continued care facility use. Convenient location, functional amenities, and abundant space combine to create a unique opportunity in Eastern Oregon.

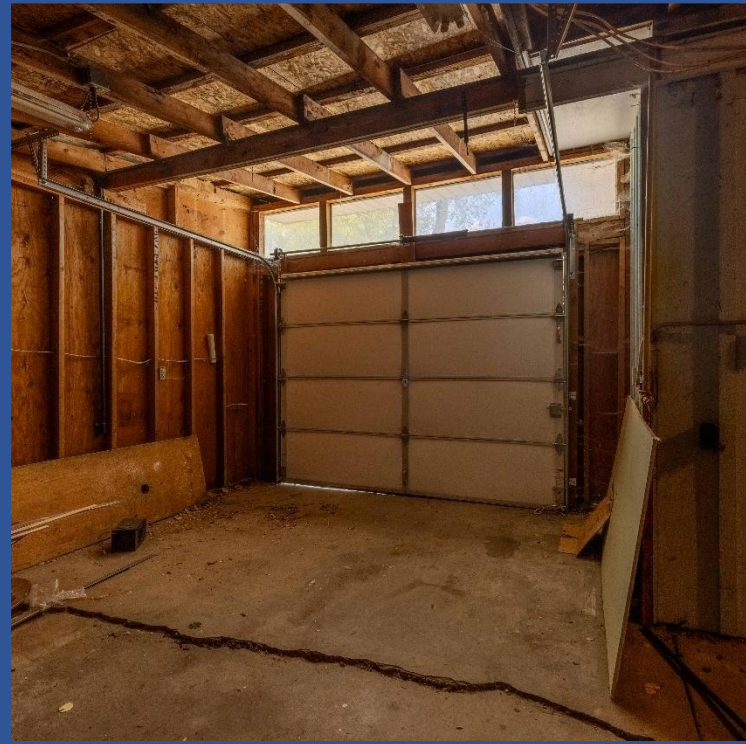


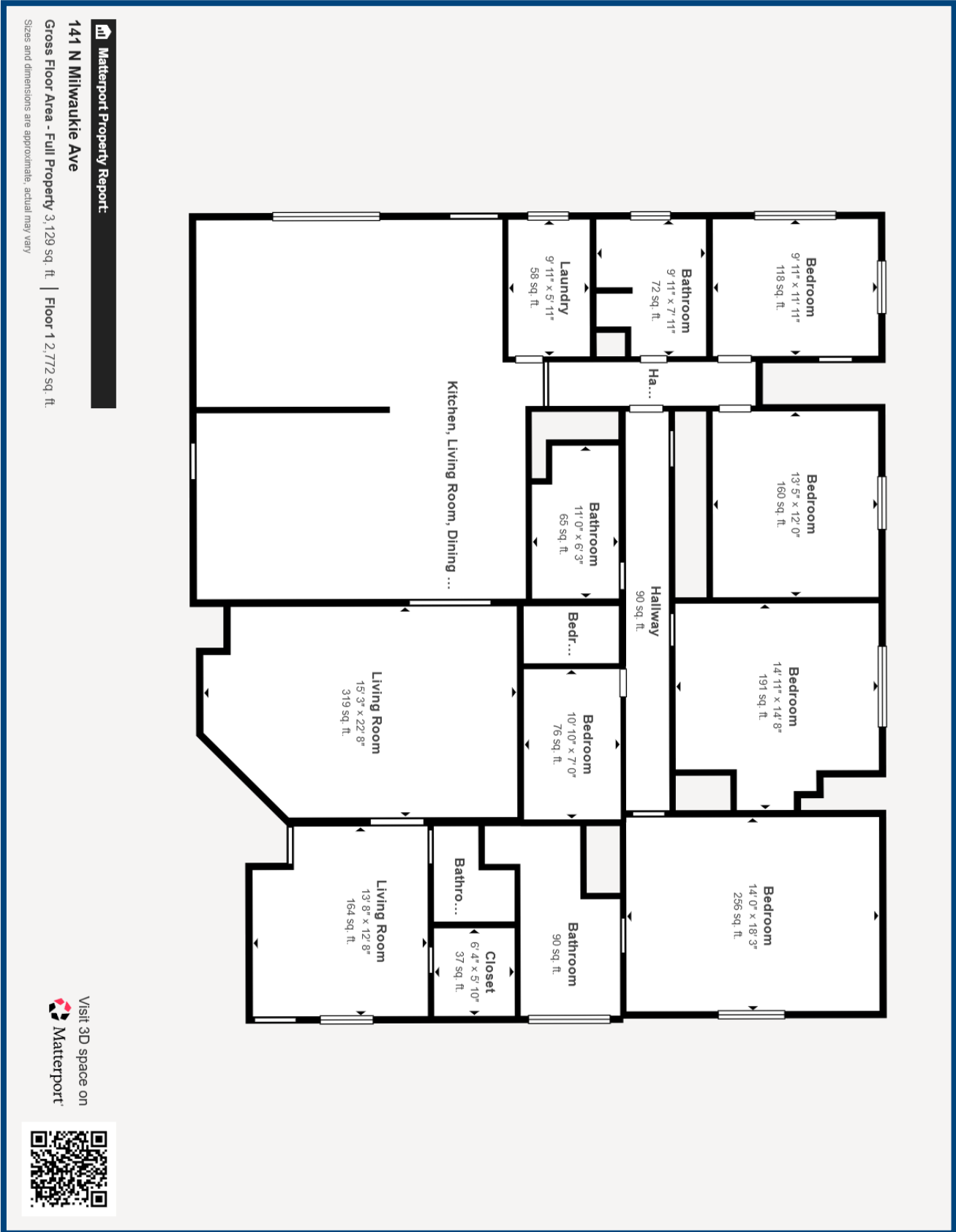
The seller and his agent make these representations in good faith, from personal knowledge and experience. However, the buyer should inspect this property or cause this property to be inspected by knowledgeable persons so that the buyer may purchase without relying upon any representations made by the seller or his agent. Also, unless otherwise specified we, Jett Blackburn Real Estate, Inc. agents, represent the seller on all our listings.







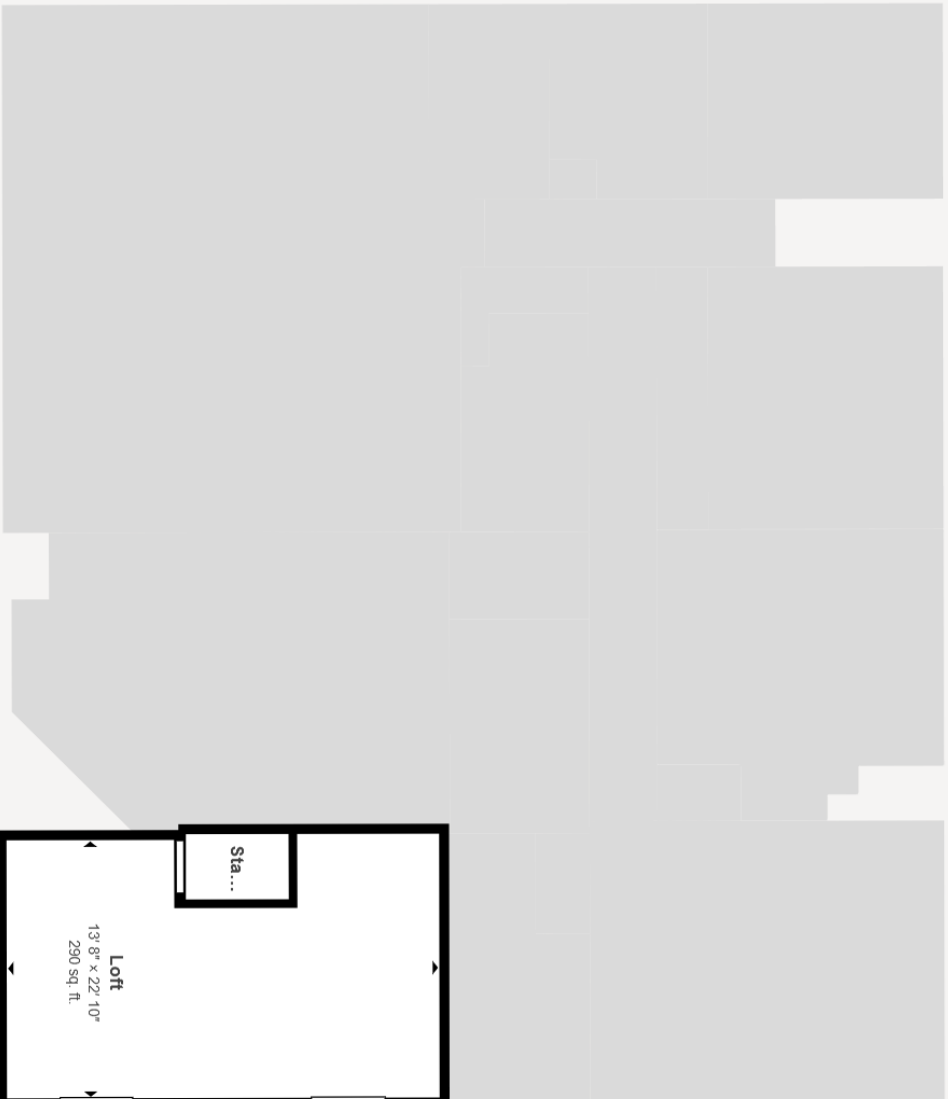




Visit 3D space on  
 Matterport




**Matterport Property Report:**  
**141 N Milwaukie Ave**  
Gross Floor Area - Full Property 3,129 sq. ft. | Floor 2 357 sq. ft.  
Sizes and dimensions are approximate, actual may vary




Loft  
13' 8" x 22' 10"  
290 sq. ft.

Sta...

Visit 3D space on  
Matterport



**141 N Milwaukie Ave, Hines - Symmetry Care**  
Oregon, AC +/-



United County Real Estate  
Jett Blackburn  
Real Estate Inc.

0 100 200 300 400ft

▭ Boundary  
 ▭ Forest Service  
 ▭ State Land  
 ▭ Fish and Wildlife  
 ▭ National Park  
 ▭ Other  
 ▭ BLM  
 ▭ Local Government  
 ▭ Stream, Intermittent  
 ▭ River/Creek  
 ▭ Water Body

United County Jett Blackburn Real Estate (map for illustration purposes only)  
 P: 541-413-5660   www.jettblackburn.com   707 Ponderosa Village, Burns, OR 97720

**id.** The information contained herein was obtained from sources deemed to be reliable. Land id® Services makes no warranties or guarantees as to the completeness or accuracy thereof.

**141 N Milwaukie Ave, Hines - Symmetry Care**  
Oregon, AC +/-



- ▭ Boundary
- ▭ Forest Service
- ▭ State Land
- ▭ Fish and Wildlife
- ▭ National Park
- ▭ Other
- ▭ BLM
- ▭ Local Government
- ▭ Water Body
- ▬ Stream, Intermittent
- ▬ River/Creek

United County Jett Blackburn Real Estate (map for illustration purposes only)  
P: 541-413-5660    www.jettblackburn.com    707 Ponderosa Village, Burns, OR 97720

**id.** The information contained herein was obtained from sources deemed to be reliable. Land id® Services makes no warranties or guarantees as to the completeness or accuracy thereof.