

# Willow Creek House

811.06+/- Deeded Acres



Selling Oregon Farms & Ranches Since 1960

# FOR SALE



This Eastern Oregon acreage features a custom-built home, shop with concrete floors, 4 large bays for equipment or toys, & over 811.06 acres of high desert terrain to recreate, graze, & hunt on. Located roughly 10 minutes up Hines Logging Road, Willow Creek Estate features the East Fork of Willow Creek running through the property with rolling hills, drainages with seasonal runoff, and access to hundreds of thousands of acres of BLM ground.

All built in 2012, the improvements on the property are all centralized with each other and include a perimeter fence paired with a cattle guard to keep livestock out while having not to open and close gates. All showing pride of ownership, the land features a custom-built, 4-bedroom, 3-bathroom home. The residence includes durable finishes with concrete sidewalks, a metal roof, Hardie Plank siding, and vinyl windows for energy efficiency and low maintenance.

A double-car garage offers ample space for parking and includes additional storage areas with built-in shelving and room for extra freezers. From the garage, you enter into a large mudroom with tile flooring that continues into the kitchen. This utility room includes two large storage closets, cabinetry, washer and dryer hookups, and a convenient ¾ bathroom which has a tiled walk-in shower and a large, deep closet that previously served as a secure gun room. The kitchen is open-concept and overlooks the dining area, creating a great space for entertainment. It features a walk-in pantry, center island with bar seating, and abundant counter and cabinet space. Tile countertops, a built-in stovetop, dual ovens, and a conveniently placed dishwasher in the island add to the functionality of the space. Adjacent to the dining room is a generous family room with vaulted ceilings and carpet flooring. A central hallway leads to all four bedrooms and the remaining bathrooms. The primary suite is one of the first rooms off the hallway and includes his-and-hers closets and a private ¾ bathroom with tiled finishes. Across the hall, a similarly sized room is currently used as a large office. The two additional bedrooms share a well-appointed bathroom featuring a dual-sink vanity, a towel closet, and a separate enclosed space for the toilet and tub—designed for added privacy and convenience.

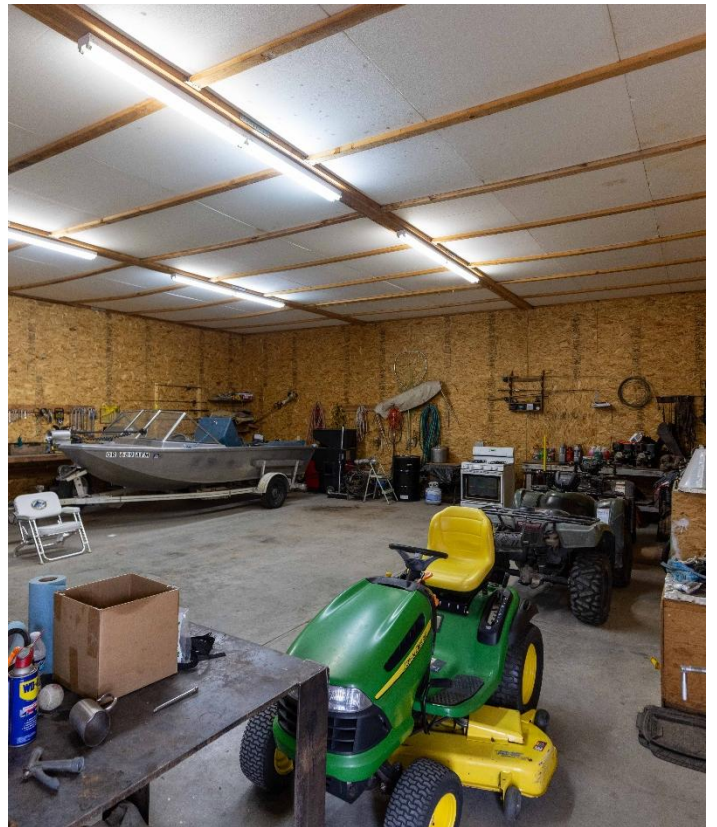
Additional improvements include a shop designed to accommodate a variety of equipment, vehicles, trailers, and more. This well-constructed structure features four deep bays, metal siding and roofing, and durable concrete floors in the shop area. Approximately 1,440 square feet, the shop is insulated for year-round use and includes a large sliding door, making it ideal for both storage and workspace needs.

The acreage is located within the Silvies Hunting Unit, the terrain is high desert with hills and rolling ground that has elevation increases of roughly 450 ft. while the highest point reaches nearly 5,000ft. The ground features sage, juniper trees, some pine trees, and other native plants. The land is currently used as summer grazing and qualifies for up to 2 land owner preference tags for potential hunting of mule deer & elk.

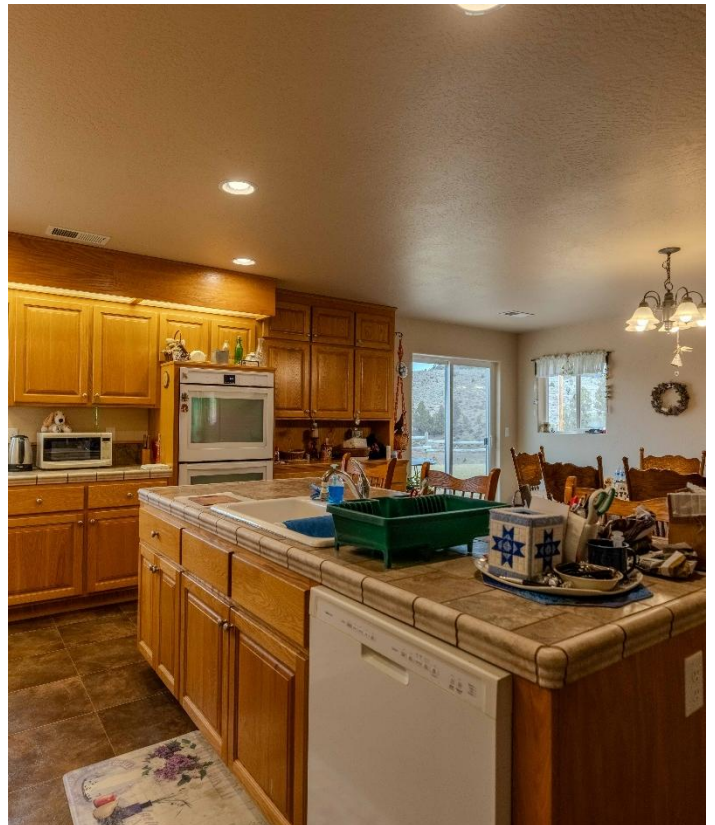
Willow Creek Estate offers a rare blend of functionality, comfort, and outdoor opportunity across more than 1,700 acres from six separate tax lots in Eastern Oregon's high desert. With a well-maintained custom home, insulated shop, abundant wildlife, and close access to expansive BLM land, this property is ideal for those seeking a private retreat for recreation, ranching, or hunting.

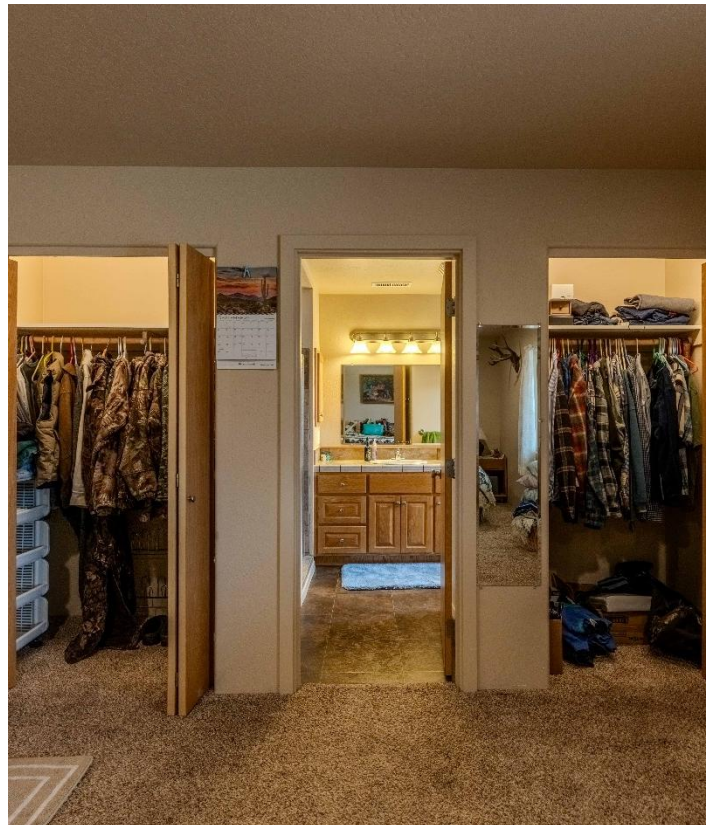
The seller and his agent makes these representations in good faith, from personal knowledge and experience. However, the buyer should inspect this property or cause this property to be inspected by knowledgeable persons so that the buyer may purchase without relying upon any representations made by the seller or his agent. Also, unless otherwise specified, we, Jett Blackburn Real Estate, Inc. agents, represent the seller on any of our listings.



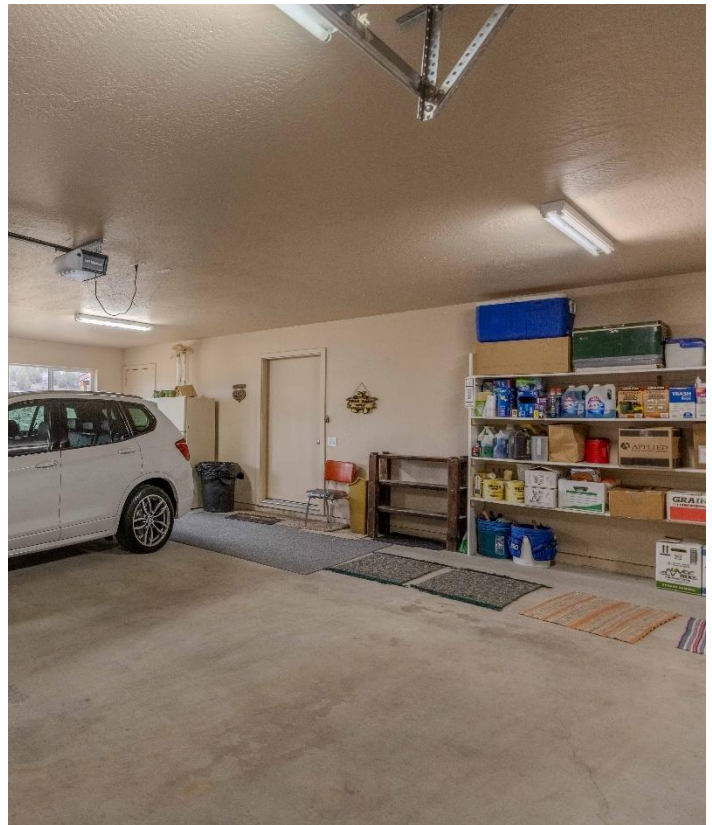
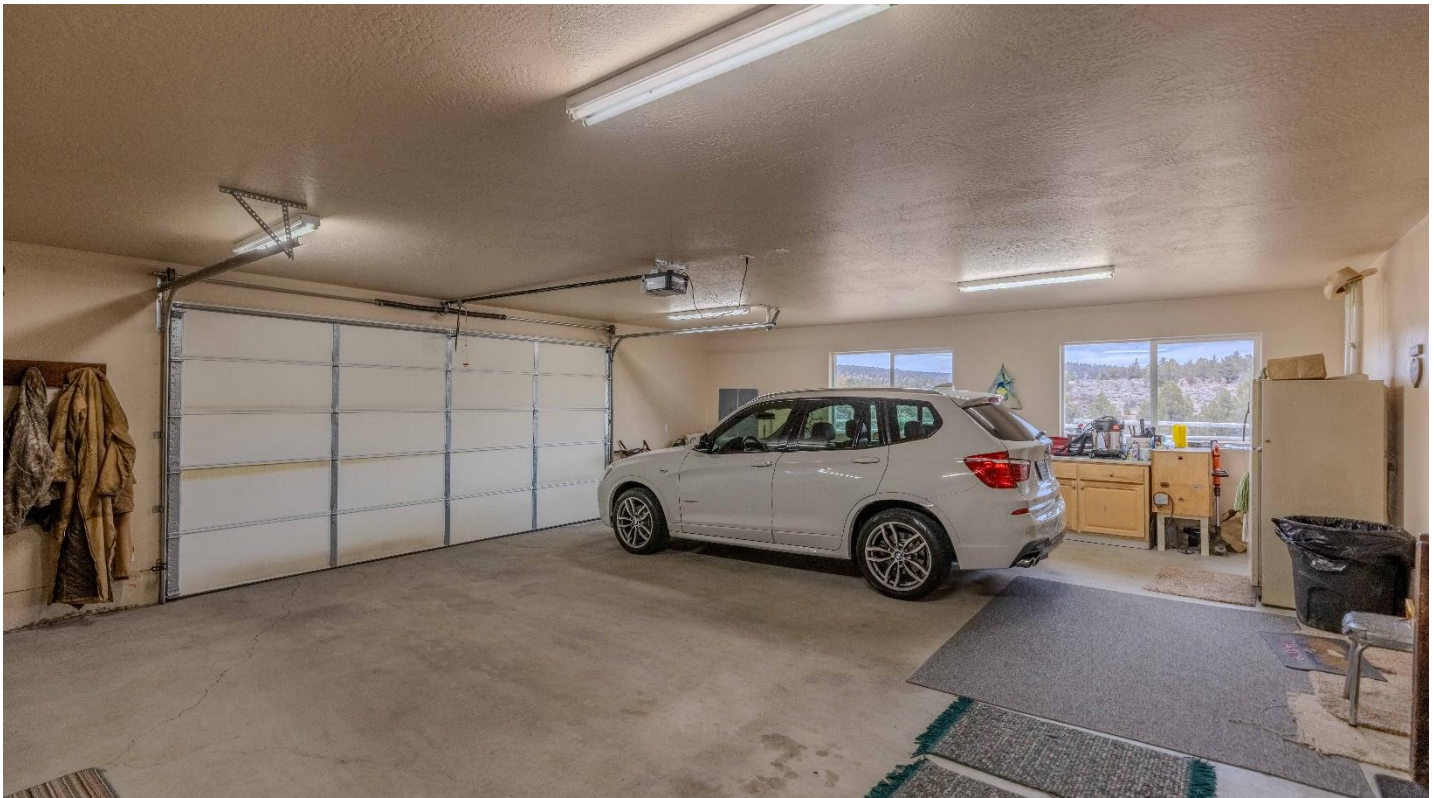










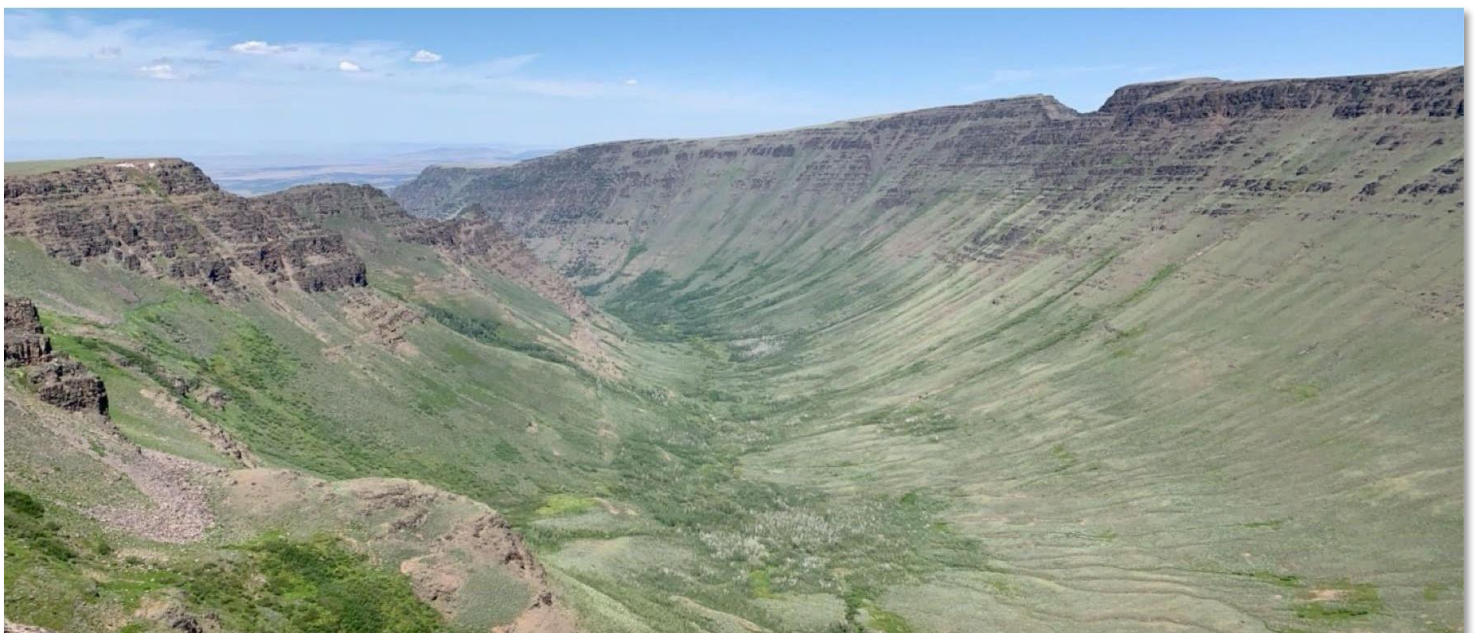


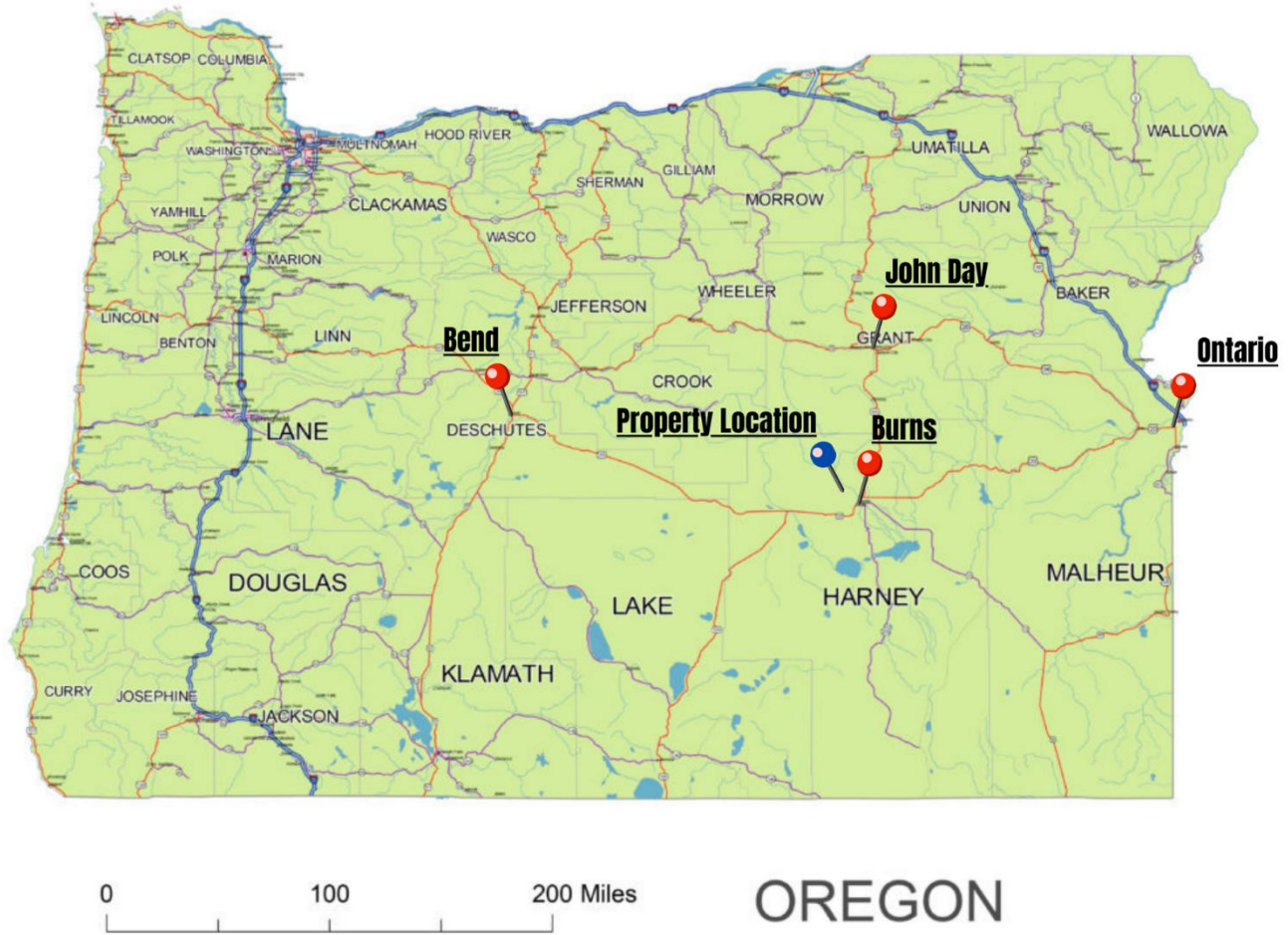


**Surrounding Area**

Harney County, located in the expansive high deserts of rural Eastern Oregon, ranks as the 10th largest county in the United States, encompassing over 10,000 square miles. This vast area boasts diverse landscapes and abundant wildlife. At the southern tip of the county, one can marvel at the stunning vistas of Steens Mountain, which oversees the Alvord Desert & Trout Creek Mountains. The northern region features the Malheur National Forest, Silvies River, & timber country.

Wildlife abounds, ranging from large game such as elk, pronghorn, & mule deer to a variety of smaller critters and bird species typical of the Pacific Northwest. The county's primary community, Burns, is situated midway between Central Oregon & the Idaho Border. A two-hour trip to the west leads to Bend, while two hours east reaches the Idaho border and the Treasure Valley.





**Location**

**Burns Oregon:** <https://www.cityofburnsor.gov/>  
20 min (13.4 mi)  
Population: 2,689 (2024)

**John Day Oregon:** <https://www.cityofjohnday.com/>  
1 hr 37 min (83.6 mi)  
Population: 1,641 (2024)

**Ontario Oregon:** <https://www.ontariooregon.org/>  
2 hr 31 min (144 mi)  
Population: 11,957 (2024)

**Bend Oregon:** <https://www.bendoregon.gov/>  
2 hr 16 min (137 mi)  
Population: 106,926 (2024)



**Matterport Property Report:**

**71899 Hines Logging Rd, Hines, OR 97720**

**Gross Floor Area - Full Property 2,715 sq. ft. | Floor 1 2,715 sq. ft.**

Sizes and dimensions are approximate, actual may vary.

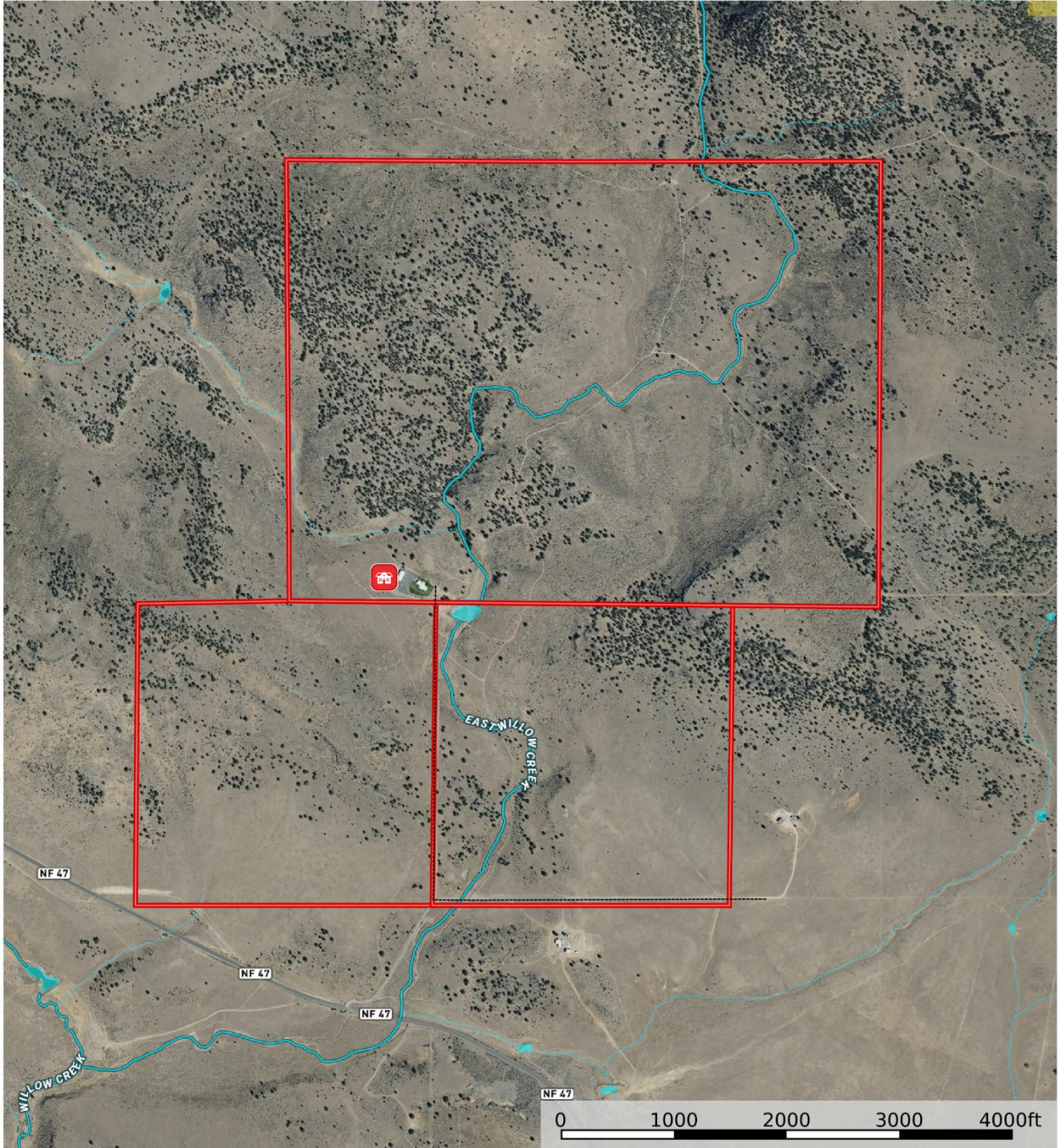


Visit 3D space on  
**Matterport**





**Willow Creek House, 71899 Hines Logging Rd, Hines - Oregon, AC +/-**



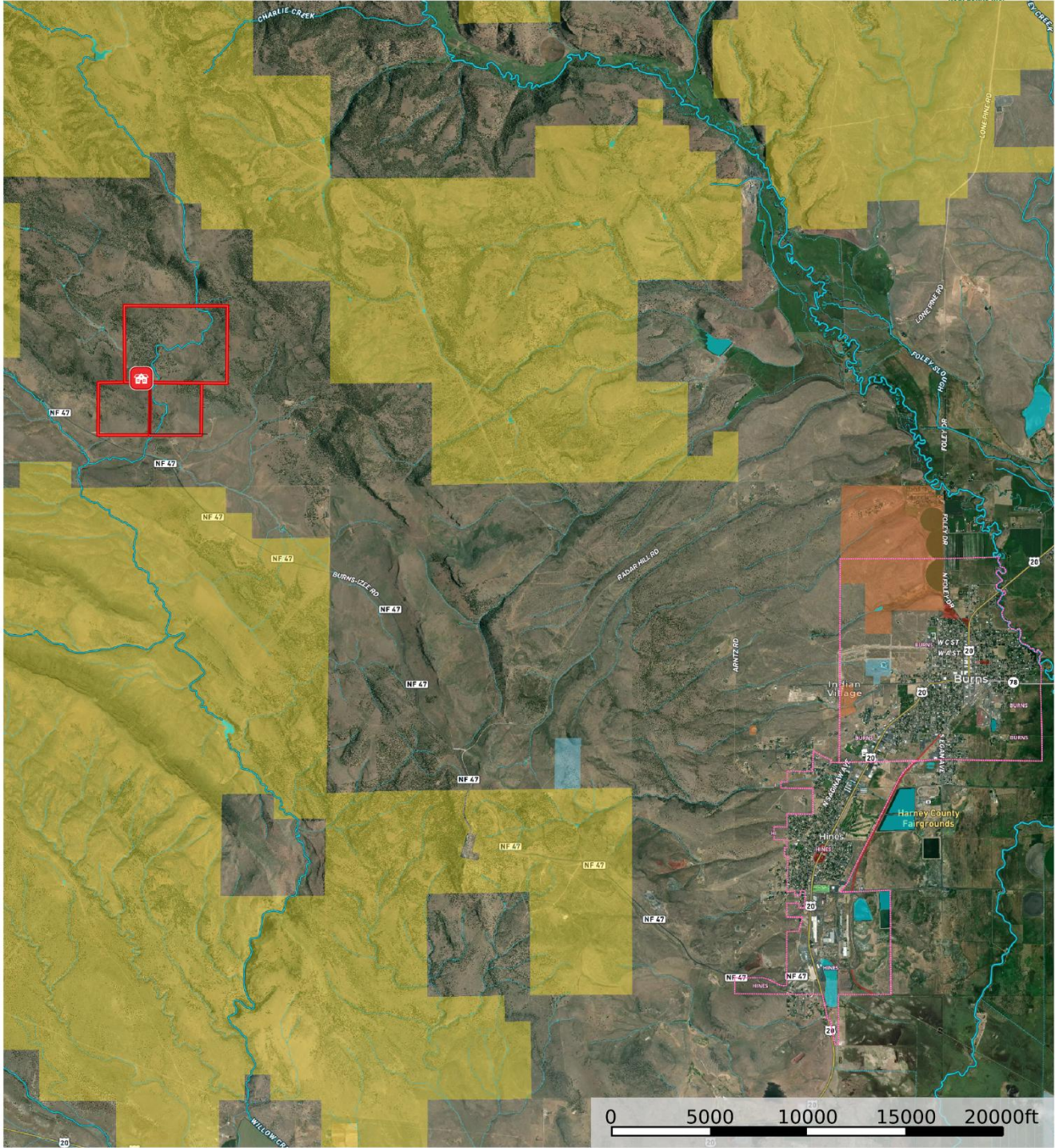
- Main House
- Power
- Boundary
- Forest Service
- State Land
- Fish and Wildlife
- National Park
- Other
- BLM
- Local Government
- Stream, Intermittent
- River/Creek
- Water Body

**United County Jett Blackburn Real Estate (map for illustration purposes only)**  
 P: 541-413-5660    [www.jettblackburn.com](http://www.jettblackburn.com)    707 Ponderosa Village, Burns, OR 97720

**id.** The information contained herein was obtained from sources deemed to be reliable. Land id® Services makes no warranties or guarantees as to the completeness or accuracy thereof.



**Willow Creek House, 71899 Hines Logging Rd, Hines - Oregon, AC +/-**



- Main House
- Power
- Boundary
- Forest Service
- State Land
- Fish and Wildlife
- National Park
- Other
- BLM
- Local Government
- Stream, Intermittent
- River/Creek
- Water Body

**United County Jett Blackburn Real Estate (map for illustration purposes only)**  
 P: 541-413-5660    www.jettblackburn.com    707 Ponderosa Village, Burns, OR 97720

**id.** The information contained herein was obtained from sources deemed to be reliable. Land id® Services makes no warranties or guarantees as to the completeness or accuracy thereof.



**LOCATION:** 71899 Hines Logging Rd, Hines, OR 97738

**LEGAL:** 22S29E00-00-01604, 22S29E00-00-01206, & 22S29E00-00-01201

**IMPROVEMENTS:** 2012 Home – 4 Bedroom, 3 Bathroom – 2,816 Sq. Ft.  
2012 Garage – 832 Sq.Ft.  
2012 Machine Shed – 1,920 Sq. Ft.  
2012 Shop – 1,440 Sq. Ft.

**APPLIANCES:** Refrigerator, Washer, Dryer, BI Dishwasher, BI Range top, Double Oven

**ACREAGE:** 811.06+/- Deeded Acres  
808.55+/- Acres – Range & Timber  
2.51+/- Acres – Site

**UTILITIES:** Harney Electric Coop  
Private Well  
Private Septic

**FINANCING:** Cash or Bank Financing

**TAXES:** \$2,294.93 – Per County Records for 25/26 Tax Year (Farm deferral)



**United Country Jett Blackburn Real Estate**

Jett Blackburn Real Estate Inc. is an independently owned brokerage franchised under United Country. First opened in 1960, Jett Blackburn Real Estate has been the oldest standing firm in their area specializing in sales of farms, ranches, hunting properties, recreational, & more. Curt Blackburn is the current owner & principal broker of Jett Blackburn Real Estate.

United Country is a franchise-based real estate marketing company that has shown tremendous success in the real estate industry for the last 95 years. Throughout the entire United States, UC has sold over 2.8 million acres in 2022 alone, with \$9.9 billion in sales all together that covered a majority of recreational, farms, & ranches. To help make these sales possible UC has a comprehensive marketing program that includes printed advertising and special property marketing websites for farms & ranches. These marketing sites include Western Livestock Journal, Land & Farm, Capital Press, Lands of America, Farm & Ranch, Lands.com, SPG's, and much more. They are partnered with Realtree United Country Hunting Properties & UC Ranch

**Presented By**



**Curt Blackburn**

[curt@jettblackburn.com](mailto:curt@jettblackburn.com)

(541)413-5777



**Jake Blackburn**

[jake@jettblackburn.com](mailto:jake@jettblackburn.com)

(541)413-5774