

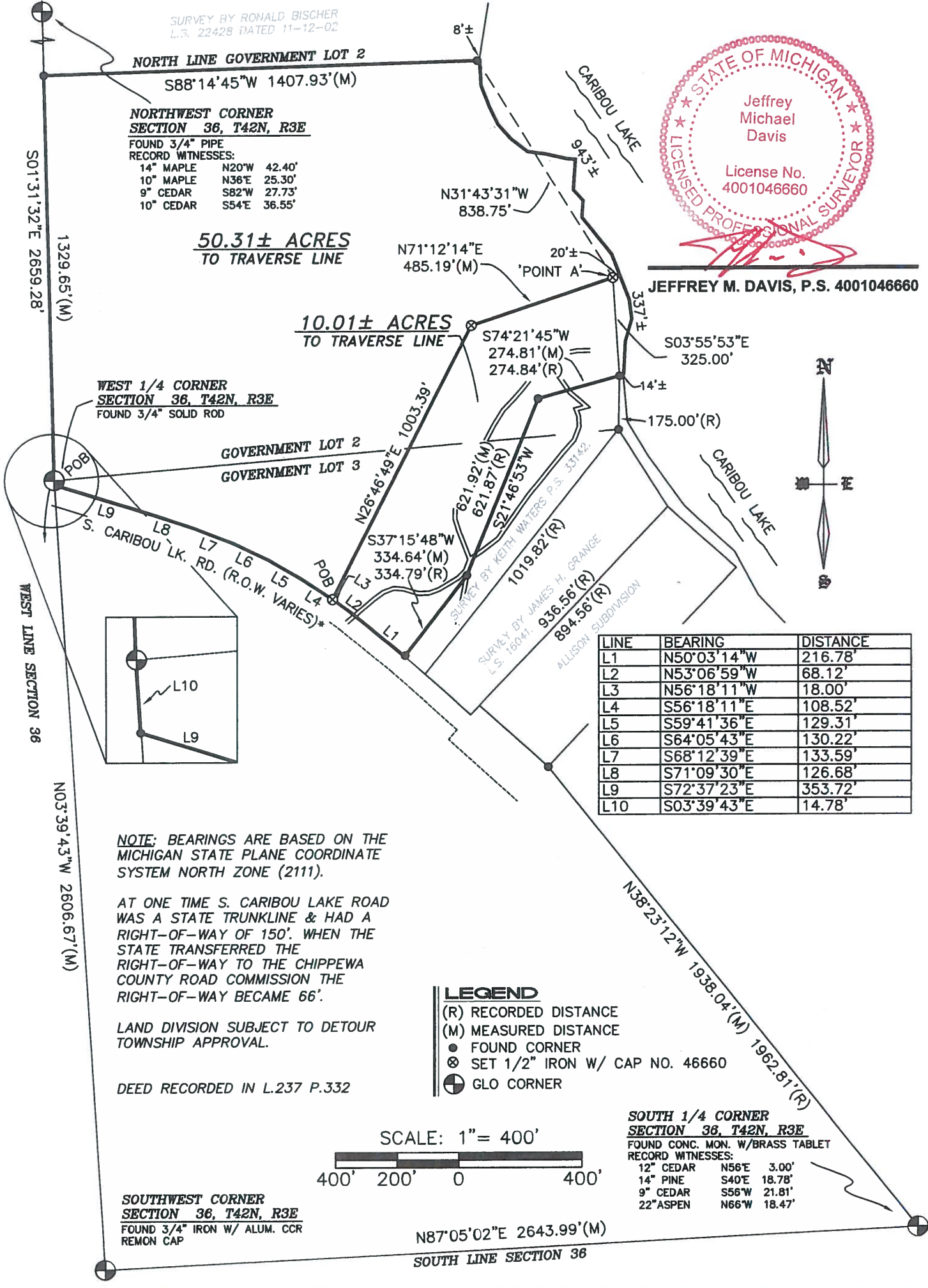
CERTIFICATE OF SURVEY

PART OF GOVERNMENT LOTS 2 AND 3, SECTION 36, TOWNSHIP 42 NORTH, RANGE 03 EAST, DETOUR TOWNSHIP, CHIPPEWA COUNTY, MICHIGAN.

SURVEY BY RONALD BISCHER
L.S. 22428 DATED 11-12-02



JEFFREY M. DAVIS, P.S. 4001046660

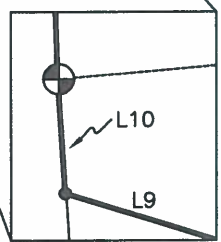


NORTHWEST CORNER
SECTION 36, T42N, R3E
FOUND 3/4" PIPE
RECORD WITNESSES:
14" MAPLE N20°W 42.40'
10" MAPLE N36°E 25.30'
9" CEDAR S82°W 27.73'
10" CEDAR S54°E 36.55'

50.31± ACRES
TO TRAVERSE LINE

10.01± ACRES
TO TRAVERSE LINE

WEST 1/4 CORNER
SECTION 36, T42N, R3E
FOUND 3/4" SOLID ROD



LINE	BEARING	DISTANCE
L1	N50°03'14"W	216.78'
L2	N53°06'59"W	68.12'
L3	N56°18'11"W	18.00'
L4	S56°18'11"E	108.52'
L5	S59°41'36"E	129.31'
L6	S64°05'43"E	130.22'
L7	S68°12'39"E	133.59'
L8	S71°09'30"E	126.68'
L9	S72°37'23"E	353.72'
L10	S03°39'43"E	14.78'

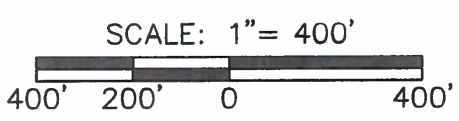
NOTE: BEARINGS ARE BASED ON THE MICHIGAN STATE PLANE COORDINATE SYSTEM NORTH ZONE (2111).

AT ONE TIME S. CARIBOU LAKE ROAD WAS A STATE TRUNKLINE & HAD A RIGHT-OF-WAY OF 150'. WHEN THE STATE TRANSFERRED THE RIGHT-OF-WAY TO THE CHIPPEWA COUNTY ROAD COMMISSION THE RIGHT-OF-WAY BECAME 66'.

LAND DIVISION SUBJECT TO DETOUR TOWNSHIP APPROVAL.

DEED RECORDED IN L.237 P.332

- LEGEND**
- (R) RECORDED DISTANCE
 - (M) MEASURED DISTANCE
 - FOUND CORNER
 - ⊗ SET 1/2" IRON W/ CAP NO. 46660
 - ⊕ GLO CORNER



SOUTHWEST CORNER
SECTION 36, T42N, R3E
FOUND 3/4" IRON W/ ALUM. CCR
REMON CAP

SOUTH 1/4 CORNER
SECTION 36, T42N, R3E
FOUND CONC. MON. W/BRASS TABLET
RECORD WITNESSES:
12" CEDAR N56°E 3.00'
14" PINE S40°E 18.78'
9" CEDAR S56°W 21.81'
22" ASPEN N66°W 18.47'

SURVEY FOR:
OSTERLAND, H

DATE: JAN. 03, 2022

SIDOCK GROUP INC.

ENGINEERS • ARCHITECTS • SURVEYORS

2001 ASHMUN STREET SAULT STE. MARIE, MICHIGAN 49783 TEL: (906) 632-1500

SCALE: 1" = 400'

DRAWN	WJK	SHEET 1 OF 2
COMPUTED	JMD	JOB 7604-01