

Royal T Ranch

160.31(+/-) Acres



Selling Oregon Farms & Ranches Since 1960

FOR SALE



This Eastern Oregon ranchette sits at the end of a private driveway with wide-open views of farm ground and native high desert country. Located off Highway 20, the Royal T Ranch consists of 160.31 deeded acres featuring two large drainages that feed into a small reservoir, with Willow Creek running along the southern boundary. The property offers a beautiful 1,696 sq. ft. home, shop, barn, hay cover, chicken coop, and much more, all while backing up to thousands of acres of public ground with direct access out the back gate. The property also qualifies for landowner preference tags within the Silvies Hunting Unit.

Positioned on a flat near the back portion of the acreage, the improvements are thoughtfully laid out together while still providing plenty of elbow room and privacy. The home is a must-see, featuring covered front and back patios, two decks, Hardie plank siding, vinyl windows, and a metal roof. Inside, the home offers vaulted ceilings, hickory flooring, and a large open entertainment space with ample windows bringing in natural light. The kitchen includes hickory countertops, knotty alder cabinets with soft-close drawers, a Miele dishwasher, Sub-Zero refrigerator, Wolf gas cooktop, Monogram double oven, walk-in pantry, and a large island. Storage throughout the kitchen is substantial, with abundant cabinetry and counter space. The living and dining areas are centered around the kitchen with direct access to the back deck.

The master suite features vaulted ceilings and French door access, along with a private sunroom and access to both a private deck and the main deck. The attached $\frac{3}{4}$ bathroom includes a granite sink, tiled walk-in shower, vanity storage, and a walk-in closet.

The remaining bedroom and bathroom are located down an oversized hallway off the open family room. The bedroom is spacious, while the bathroom includes tile flooring, a large jetted soaking tub, and a custom sink. At the end of the hallway is a large built-in storage cabinet along with an additional coat closet. The laundry room is located near the front entrance and includes a built-in ironing board with access to the attached 624 sq. ft. double-car garage.

The seller and his agent makes these representations in good faith, from personal knowledge and experience. However, the buyer should inspect this property or cause this property to be inspected by knowledgeable persons so that the buyer may purchase without relying upon any representations made by the seller or his agent. Also, unless otherwise specified, we, Jett Blackburn Real Estate, Inc. agents, represent the seller on any of our listings.



The 1,680 sq. ft. shop matches the home with vinyl windows, Hardie plank siding, and a metal roof. It is fully insulated and equipped with 220 power, concrete floors, a ½ bathroom, pellet stove heat source, and a cooling room for hanging harvested animals. Attached to the back of the shop is the barn, which features the same siding and roofing. The barn includes three stables, an enclosed tack room, and a loft area that has previously been used as office space and a workout room.

Behind the shop is a 900 sq. ft. hay cover with a lean-to, greenhouse, and chicken coop. The hay cover is a pole structure, while the chicken coop has previously been set up for both meat chickens and laying hens, with the ability to separate or combine them as needed.

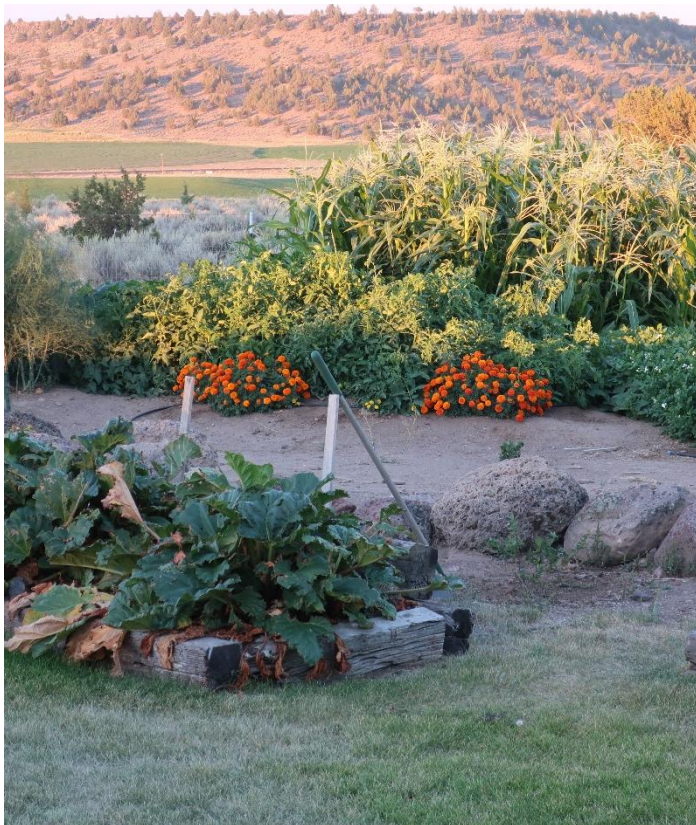
While the property has primarily been used for horses and a hobby setup, it also serves as an ideal travel corridor for local wildlife. The 160+ acres allow owners to apply for landowner preference tags and provide opportunities to hunt mule deer and elk. Historically, the current landowners have successfully harvested animals year after year, as the drainages lead directly to irrigated alfalfa fields while also providing natural cover for wildlife movement. Beyond hunting, recreation opportunities are endless with direct access to thousands of acres of public land for horseback riding, ATV riding, mountain biking, hiking, and more. The area also offers minimal light pollution, making for incredible star-filled skies on clear nights.

Whether you are looking for a quiet place to retire, a small ranch setup, hunting property, or simply room to spread out and enjoy country living, this Eastern Oregon property offers a rare combination of comfort, privacy, recreation, and wide-open space. With quality improvements, direct public land access, and the peaceful setting of the high desert, Royal T Ranch is a property that truly captures the Eastern Oregon lifestyle.

The seller and his agent makes these representations in good faith, from personal knowledge and experience. However, the buyer should inspect this property or cause this property to be inspected by knowledgeable persons so that the buyer may purchase without relying upon any representations made by the seller or his agent. Also, unless otherwise specified, we, Jett Blackburn Real Estate, Inc. agents, represent the seller on any of our listings.



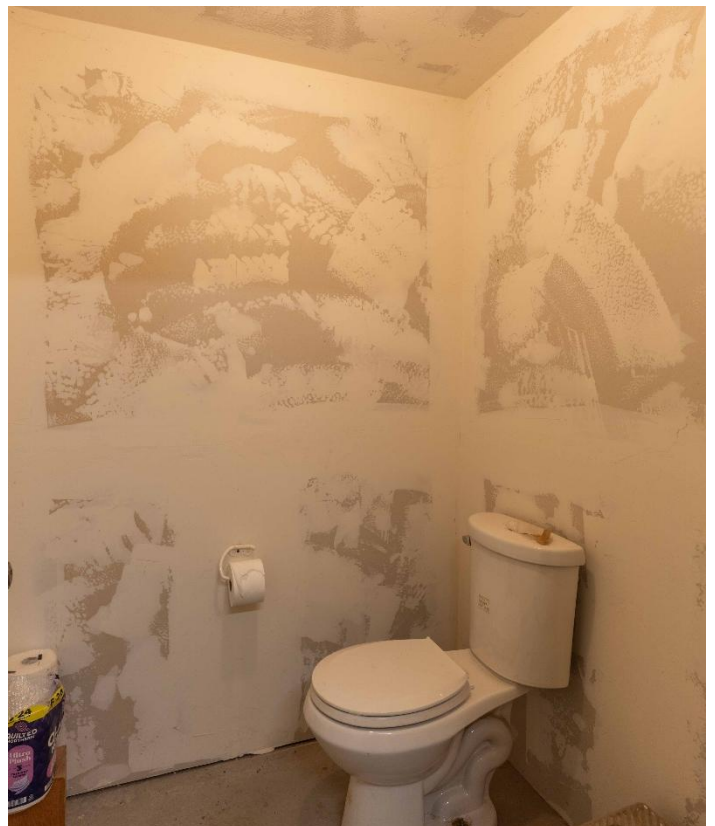
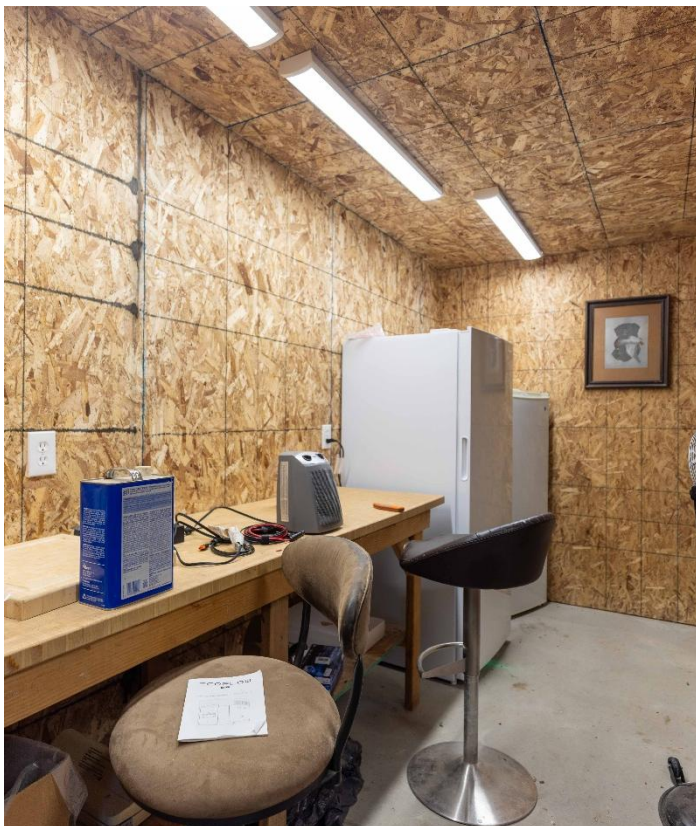


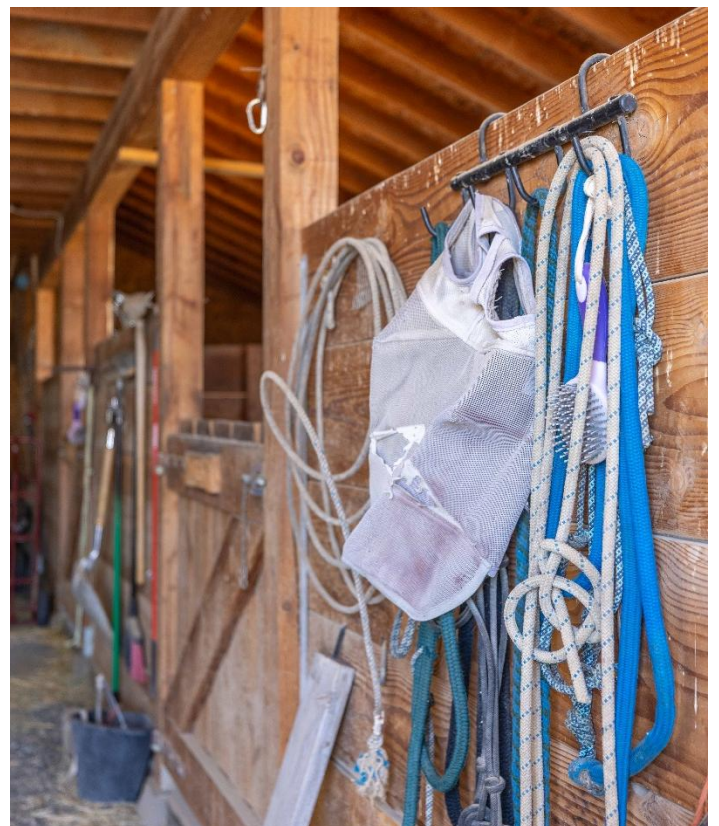
















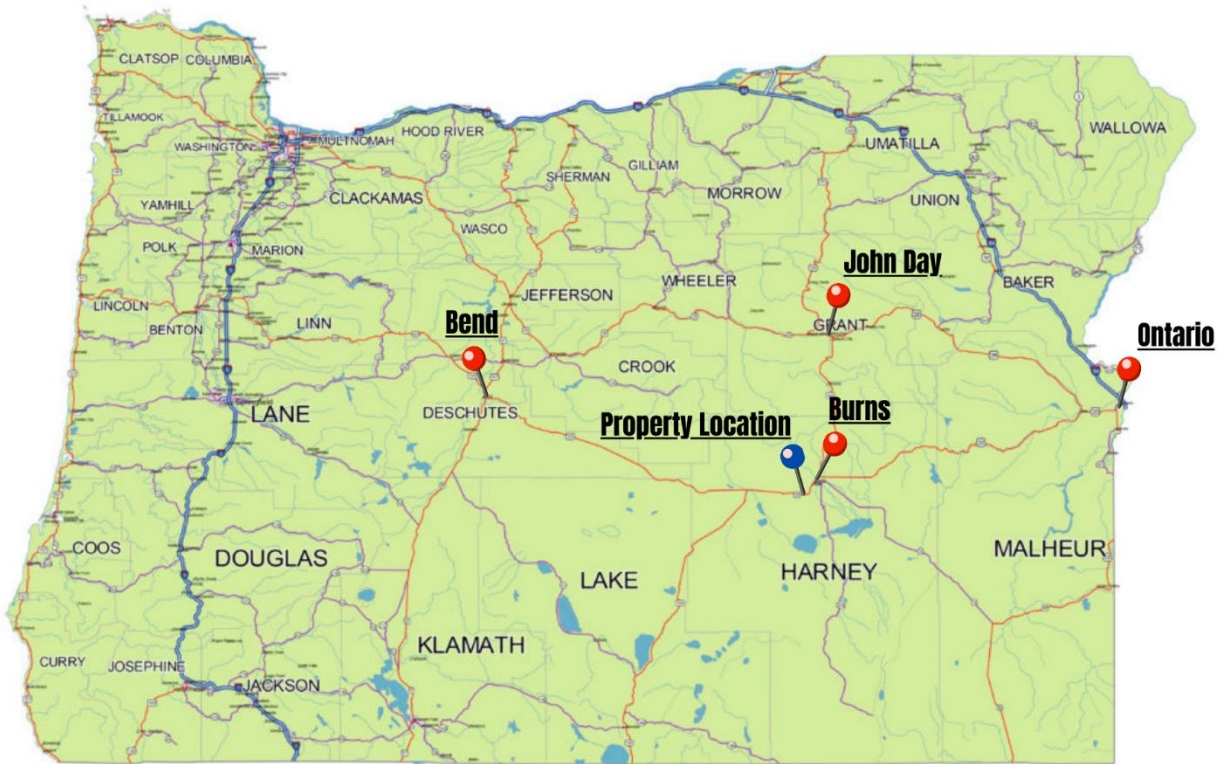
Surrounding Area

Harney County, located in the wide-open high desert of Eastern Oregon, is the 10th largest county in the United States, encompassing more than 10,000 square miles of diverse landscapes and abundant wildlife. The region is known for its sweeping valleys, sagebrush plains, mountain ranges, and scenic waterways that provide a unique blend of agricultural productivity and outdoor recreation.

At the southern end of the county stands Steens Mountain, one of Oregon's most dramatic natural landmarks, offering breathtaking views overlooking the Alvord Desert and the Trout Creek Mountains. To the north, the landscape transitions into the Malheur National Forest, the Silvies River corridor, and timbered country that provides excellent habitat for wildlife.

Wildlife is plentiful throughout the region, with species such as elk, mule deer, pronghorn antelope, upland birds, and a wide variety of other native wildlife commonly found across the county. The primary community of Burns, along with the neighboring town of Hines, serves as the county's hub for agriculture, services, and local commerce. Conveniently located along U.S. Highway 20, Burns sits roughly two hours east of Bend and approximately two hours west of the Idaho border and the Treasure Valley, providing access to larger regional markets while maintaining the quiet rural lifestyle Harney County is known for.





OREGON

Location

Burns Oregon: <https://www.cityofburnsor.gov/>
17 min (11.6 mi)
Population: 2,689 (2024)

John Day Oregon: <https://www.cityofjohnday.com/>
1 hr 35 min (82.3 mi)
Population: 1,641 (2024)

Ontario Oregon: <https://www.ontariooregon.org/>
2 hr 29 min (142 mi)
Population: 11,957 (2024)

Bend Oregon: <https://www.bendoregon.gov/>
1 hr 59 min (120 mi)
Population: 106,926 (2024)

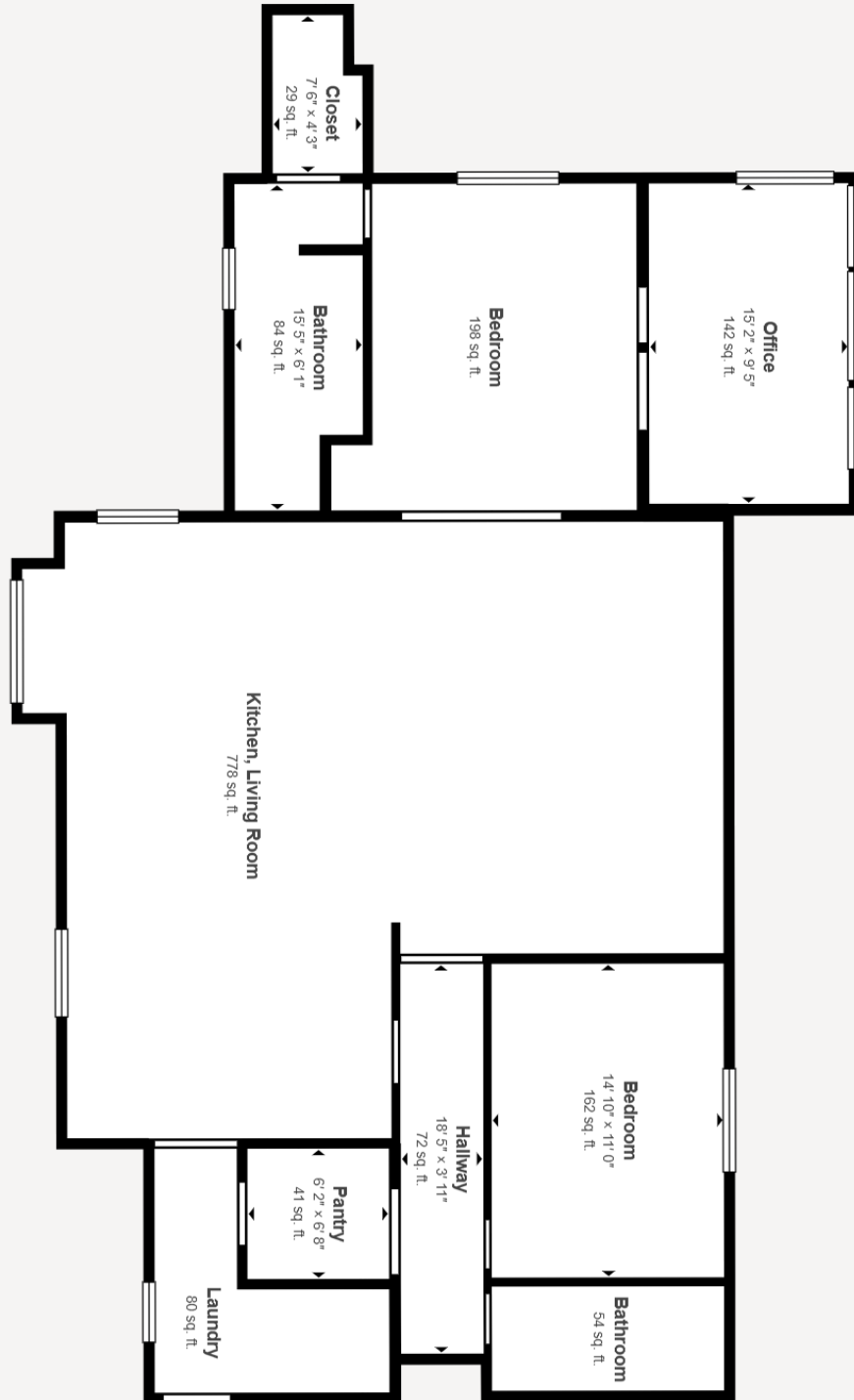


Matterport Property Report:

67608 Rawhide Rd

Gross Floor Area - Full Property 1,870 sq. ft. | Floor 1 1,870 sq. ft.

Sizes and dimensions are approximate, actual may vary.

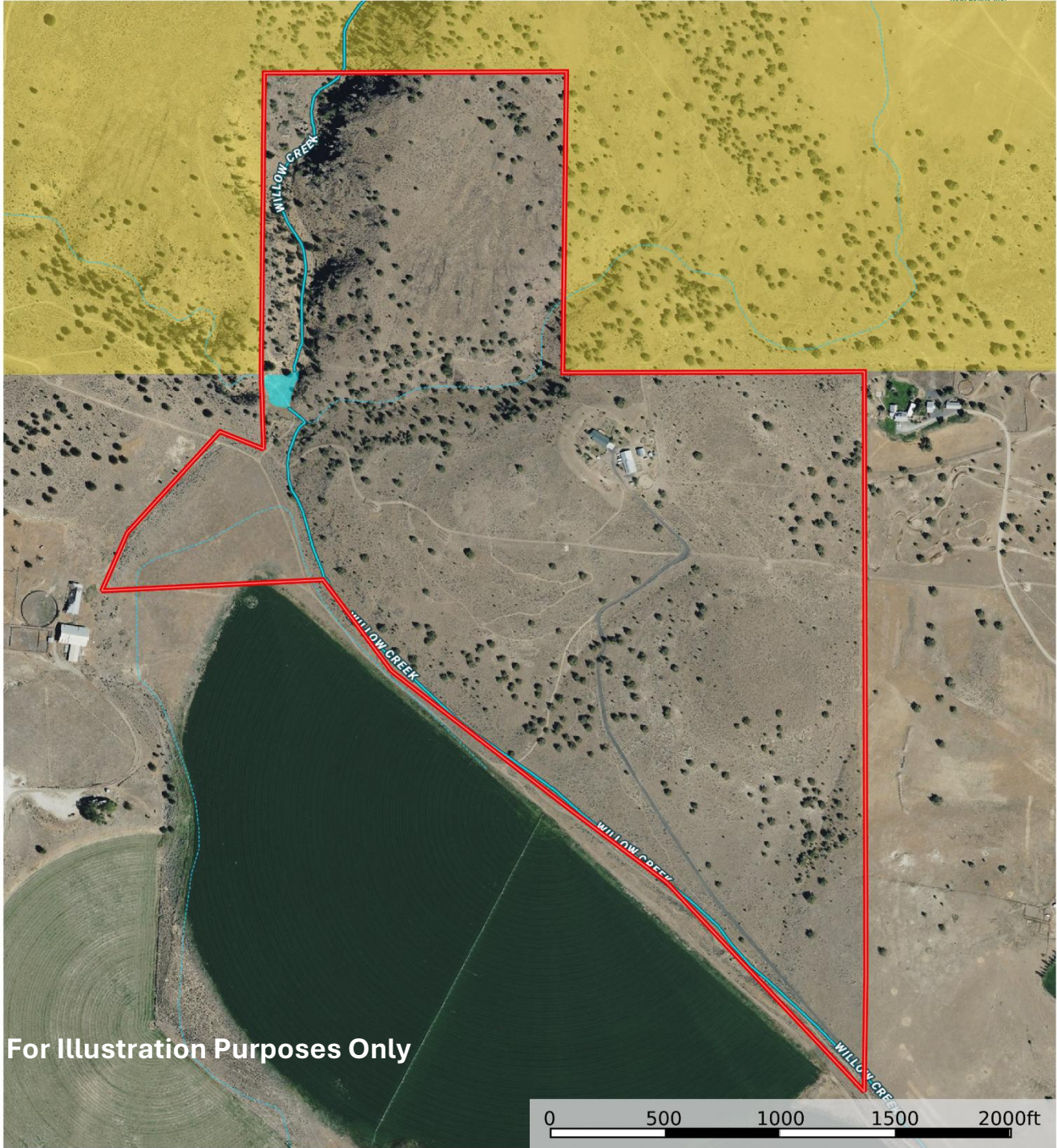


Visit 3D space on
Matterport





67608 Rawhide Rd, Hines OR - Toevs
 Oregon, AC +/-



For Illustration Purposes Only

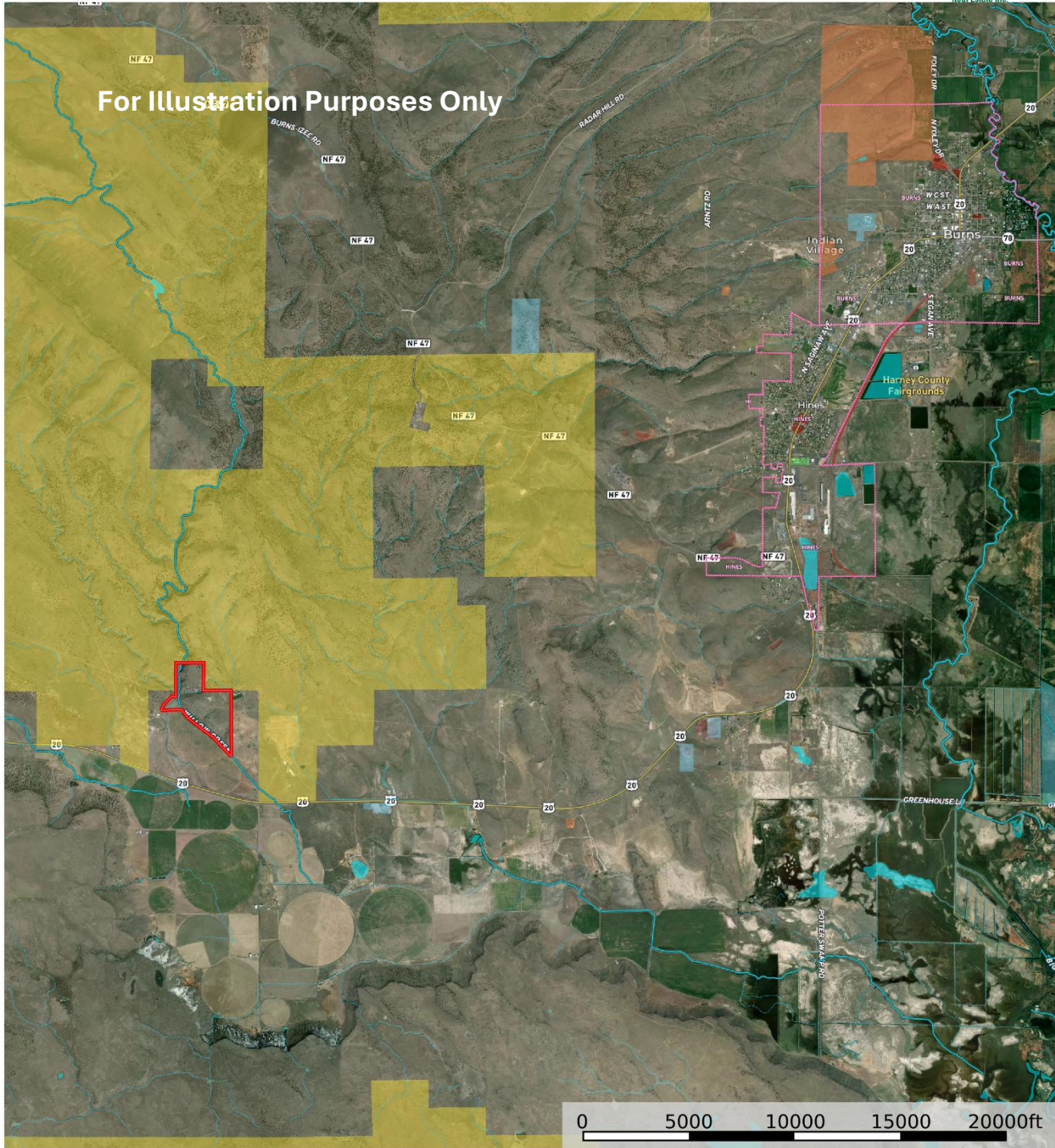
- Boundary
- Forest Service
- State Land
- Fish and Wildlife
- National Park
- Other
- BLM
- Local Government
- Stream, Intermittent
- River/Creek
- Water Body

United County Jett Blackburn Real Estate (map for illustration purposes only)
 P: 541-413-5660 www.jettblackburn.com 707 Ponderosa Village, Burns, OR 97720

id. The information contained herein was obtained from sources deemed to be reliable. Land id® Services makes no warranties or guarantees as to the completeness or accuracy thereof.



67608 Rawhide Rd, Hines OR - Toevs
 Oregon, AC +/-



For Illustration Purposes Only

- Boundary
- Forest Service
- State Land
- Fish and Wildlife
- National Park
- Other
- BLM
- Local Government
- Stream, Intermittent
- River/Creek
- Water Body

United County Jett Blackburn Real Estate (map for illustration purposes only)
 P: 541-413-5660 www.jettblackburn.com 707 Ponderosa Village, Burns, OR 97720

id. The information contained herein was obtained from sources deemed to be reliable. Land id® Services makes no warranties or guarantees as to the completeness or accuracy thereof.



LOCATION: 67608 Rawhide Rd, Hines, OR 97738

LEGAL: 24S29E01-00-00200 & 23S29E00-00-00601

IMPROVEMENTS: 2008 Home – 2 Bedroom, 1³/₄ Bathroom – 1,698 Sq.Ft.
2008 Garage – 624 Sq.Ft.
2008 Shop – 1,680 Sq.Ft.
- Includes a 1/2 bathroom & meat cooler.
2007 Barn – 2,080 Sq.Ft.
- Includes tack room, 3 stalls, & a loft with an office space.
2014 Hay Cover

ACREAGE: 160.31+/- Deeded Acres – Per County Records

APPLIANCES: Double oven, refrigerator, BI stovetop, dishwasher

UTILITIES: Private Well
Septic
Power – Harney Electric

FINANCING: Cash or Bank Financing

TAXES: \$3,678.57 – Per County Records for 25/26 Tax Year



United Country Jett Blackburn Real Estate

Jett Blackburn Real Estate Inc. is an independently owned brokerage franchised under United Country. First opened in 1960, Jett Blackburn Real Estate has been the oldest standing firm in their area specializing in sales of farms, ranches, hunting properties, recreational, & more. Curt Blackburn is the current owner & principal broker of Jett Blackburn Real Estate.

United Country is a franchise-based real estate marketing company that has shown tremendous success in the real estate industry for the last 95 years. Throughout the entire United States, UC has sold over 2.8 million acres in 2022 alone, with \$9.9 billion in sales all together that covered a majority of recreational, farms, & ranches. To help make these sales possible UC has a comprehensive marketing program that includes printed advertising and special property marketing websites for farms & ranches. These marketing sites include Western Livestock Journal, Land & Farm, Capital Press, Lands of America, Farm & Ranch, Lands.com, SPG's, and much more. They are partnered with Realtree United Country Hunting Properties & UC Ranch

Presented By



Curt Blackburn

curt@jettblackburn.com

(541)413-5777



Jake Blackburn

jake@jettblackburn.com

(541)413-5774