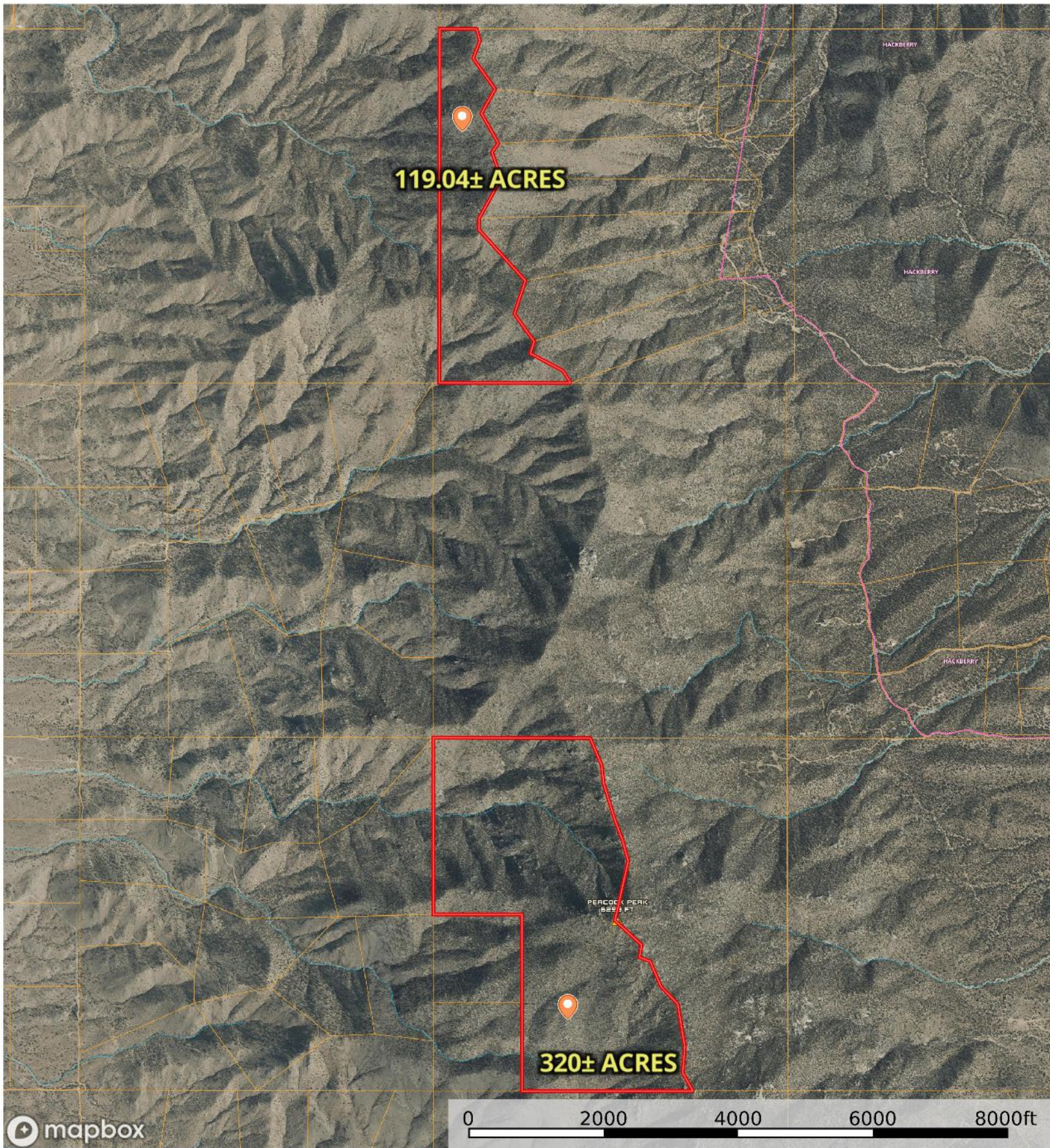


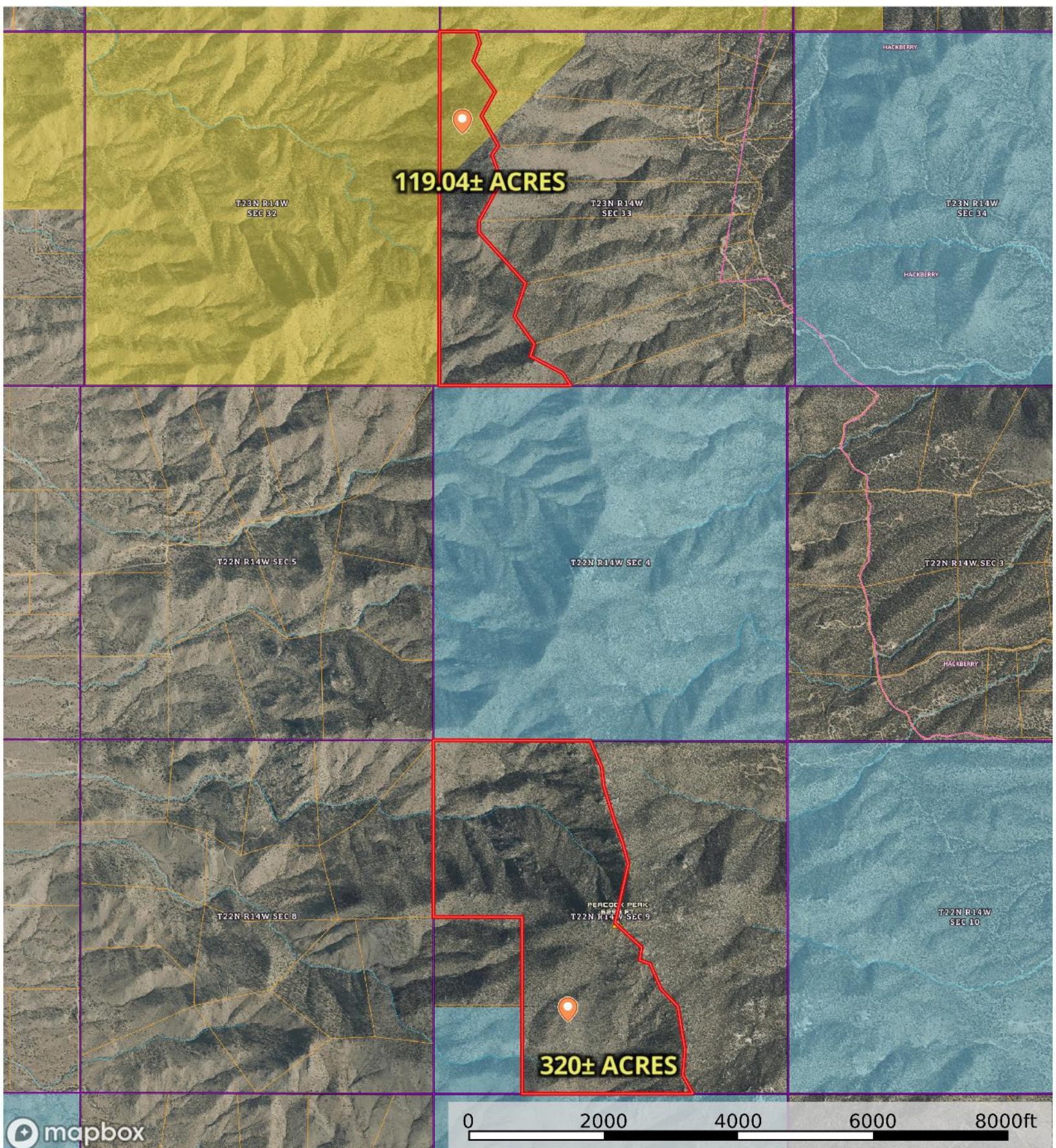
Rick and Minh Truong Estate

Mohave County, Arizona, 439.02 AC +/-



Rick and Minh Truong Estate

Mohave County, Arizona, 439.02 AC +/-

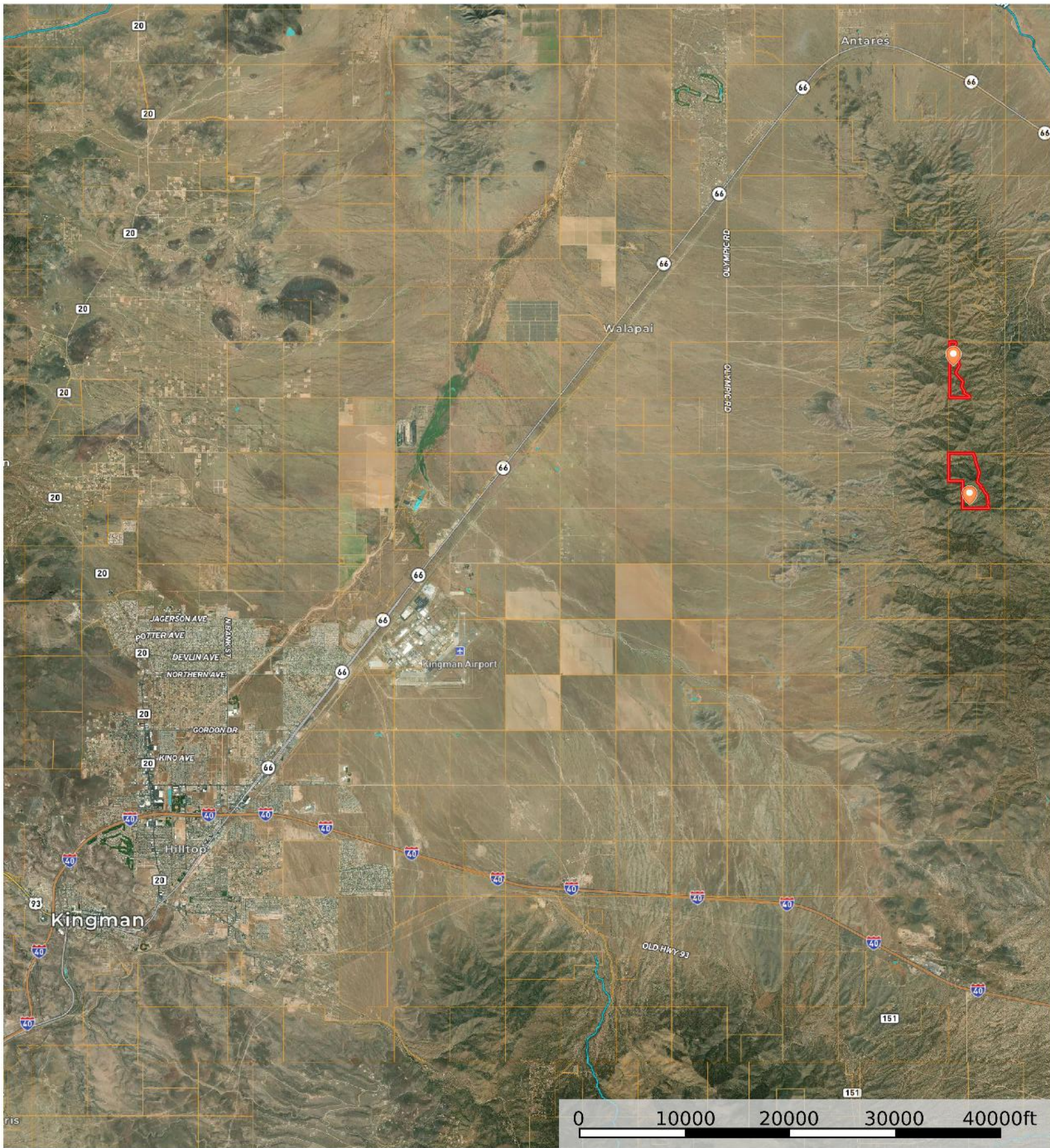


320 ± acres	113.92± Acre	Boundary	Forest Service	State Land	Fish and Wildlife	National Park	Other	BLM	Local Government
Stream, Intermittent	River/Creek	Water Body	Aerodrome	Heliport	Seaport	Glider Port	Ultra Light	Ballon Port	

The information contained herein was obtained from sources deemed to be reliable. Land id.® Services makes no warranties or guarantees as to the completeness or accuracy thereof.

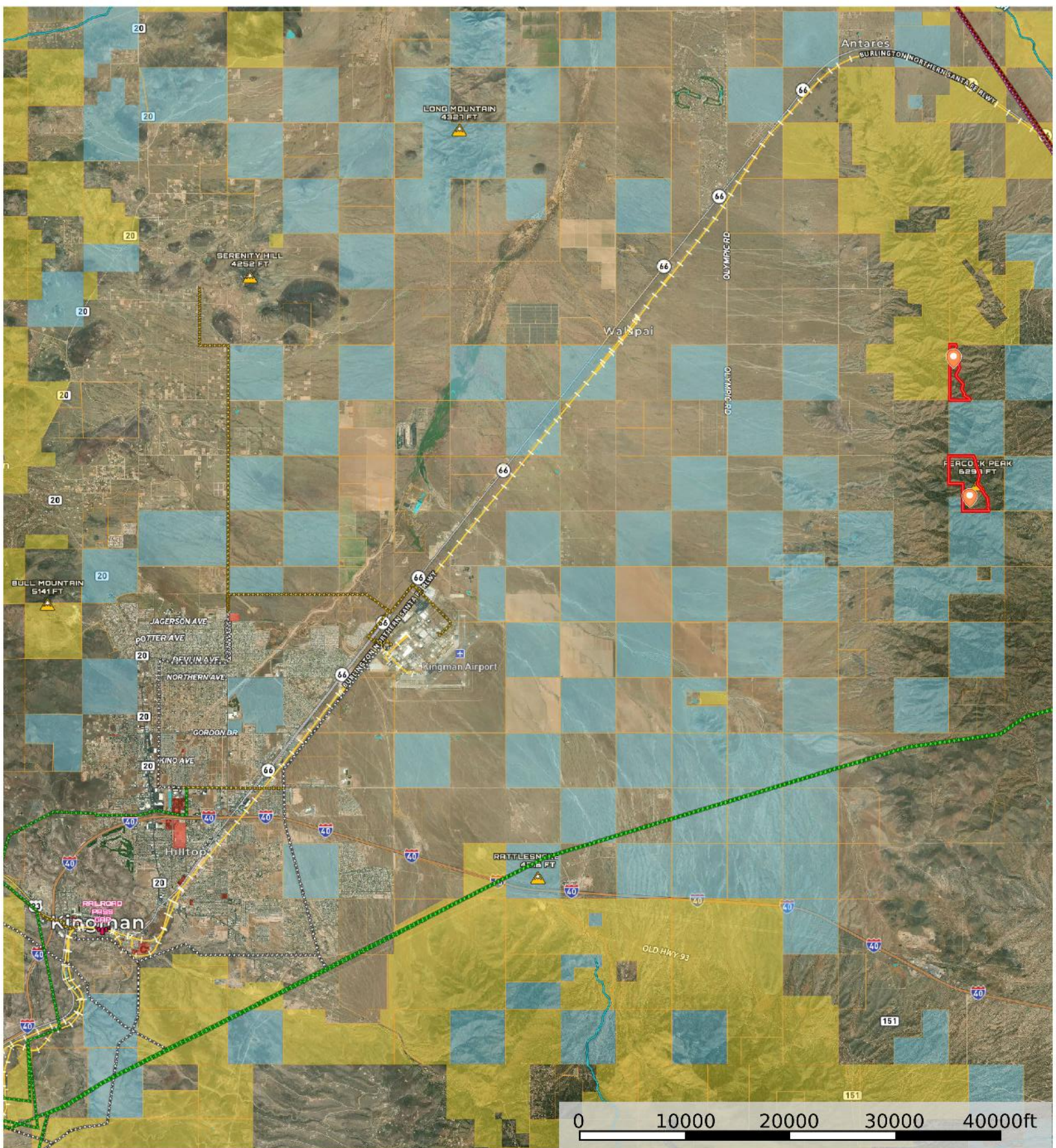
Rick and Minh Truong Estate

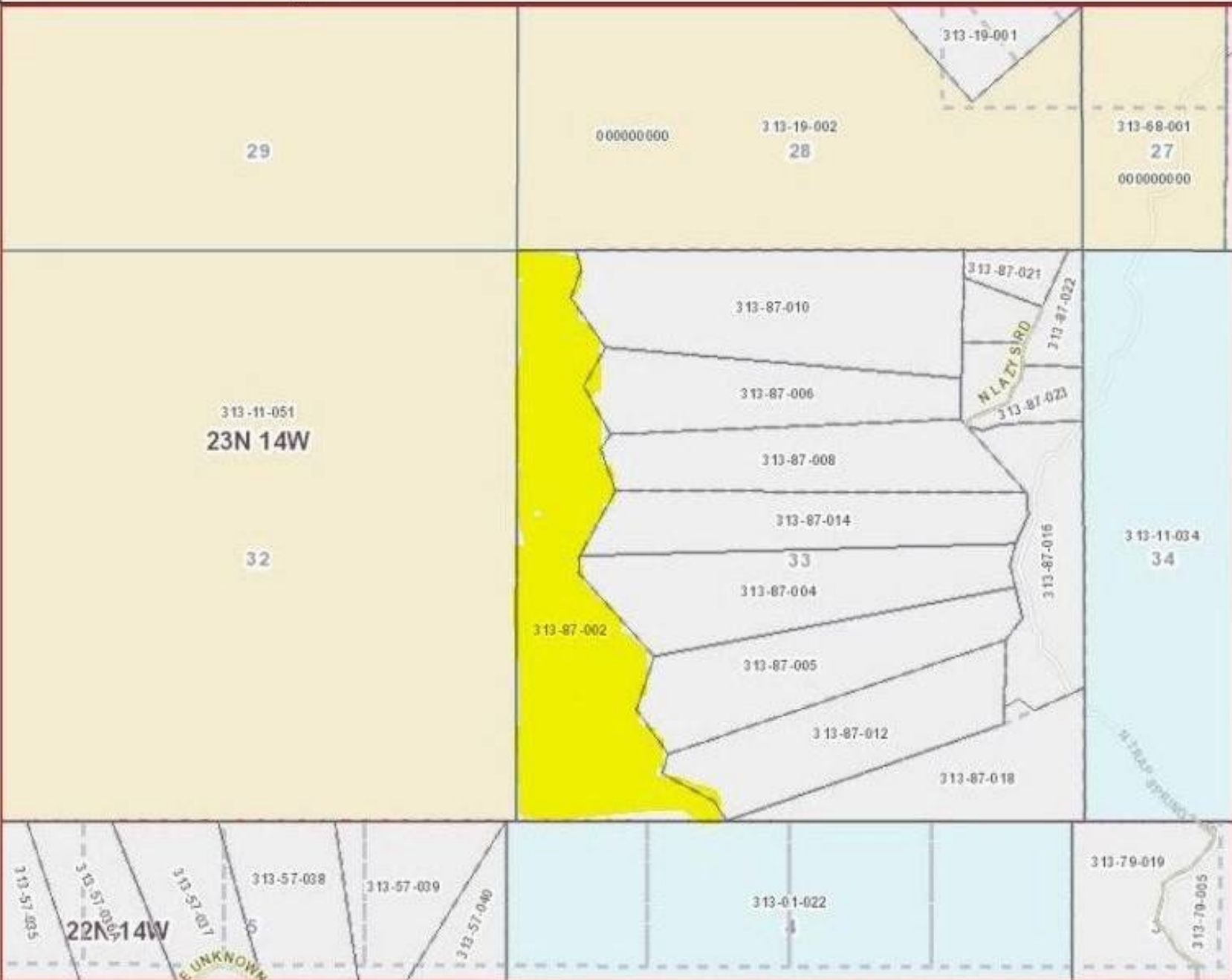
Mohave County, Arizona, 439.02 AC +/-



Rick and Minh Truong Estate

Mohave County, Arizona, 439.02 AC +/-

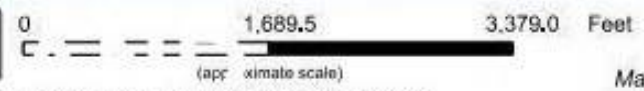




Legend

- ADOT Mileposts
- COUNTY Mileposts
- Sign Post Exists
- Calculated Measure
- Highways
- Main Arterials
- Collectors
- Local
- Railroad
- Blocks
- Lots
- City Limits (>1:120K)
- County Boundary
- Surrounding Counties
- Township/Range
- Section
- Surface Management
 - Bureau of Land Management
 - Bureau of Reclamation
 - County
 - Indian Lands
 - Local or State Parks
 - Military
 - National Parks Service
 - Other
 - Private
 - State

1: 20,274



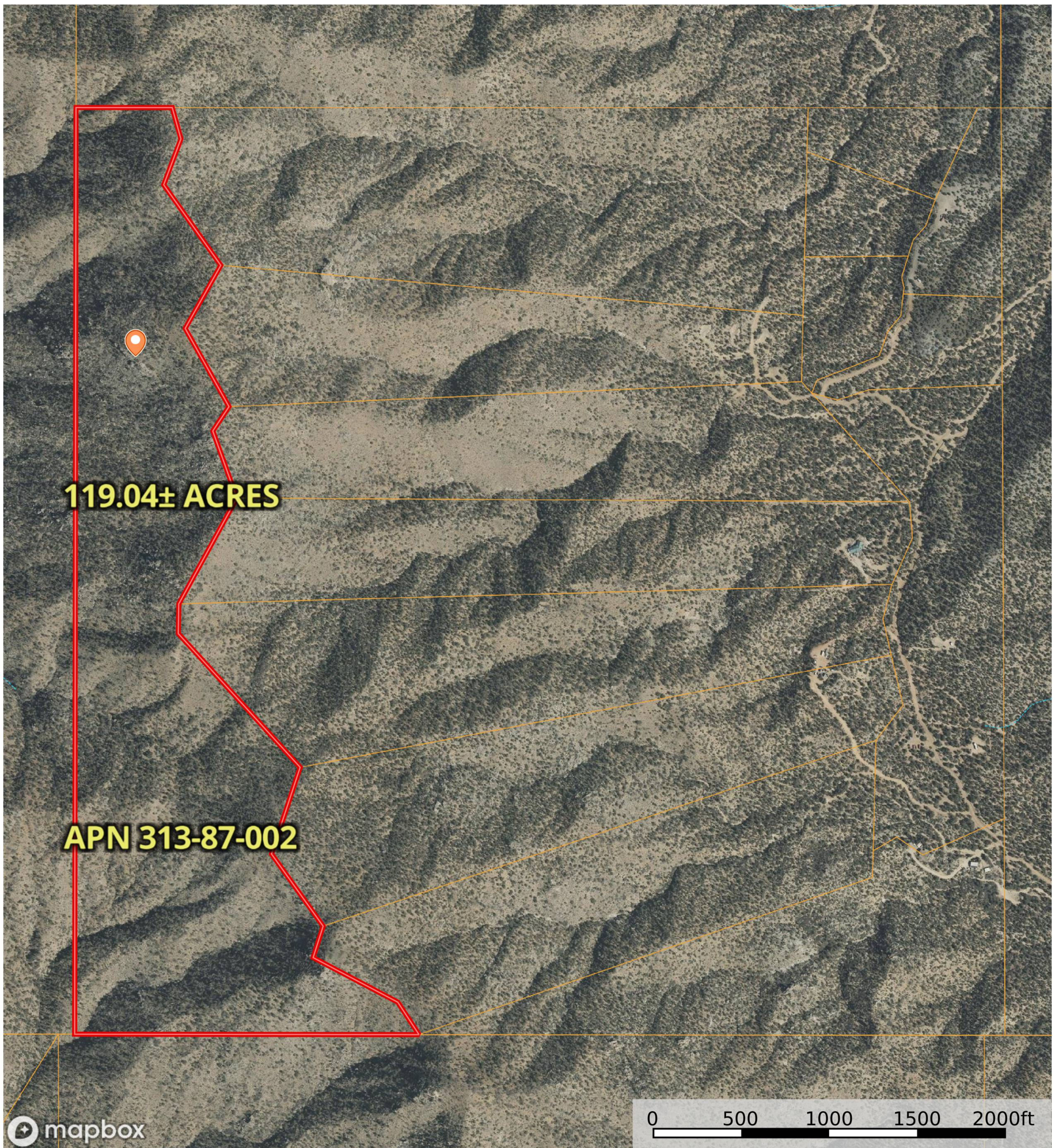
Map Created: 10/14/2021

This map is a user generated static output from the Mohave County interactive Map Viewer and is for general reference only. Data layers that appear on this map may or may not be accurate, current, or otherwise reliable. THIS MAP IS NOT TO BE USED FOR NAVIGATION, AS A LEGAL DOCUMENT, FOR PROPERTY DESCRIPTIONS, OR DETERMINATION OF LEGAL TITLE, AND SHOULD NEVER BE SUBSTITUTED FOR SURVEY OR DEED INFORMATION. The user agrees to comply with the Limitation of Use, and Assumption of Risk as stated in the full disclaimer at <https://gis.mohave.gov>

Notes:

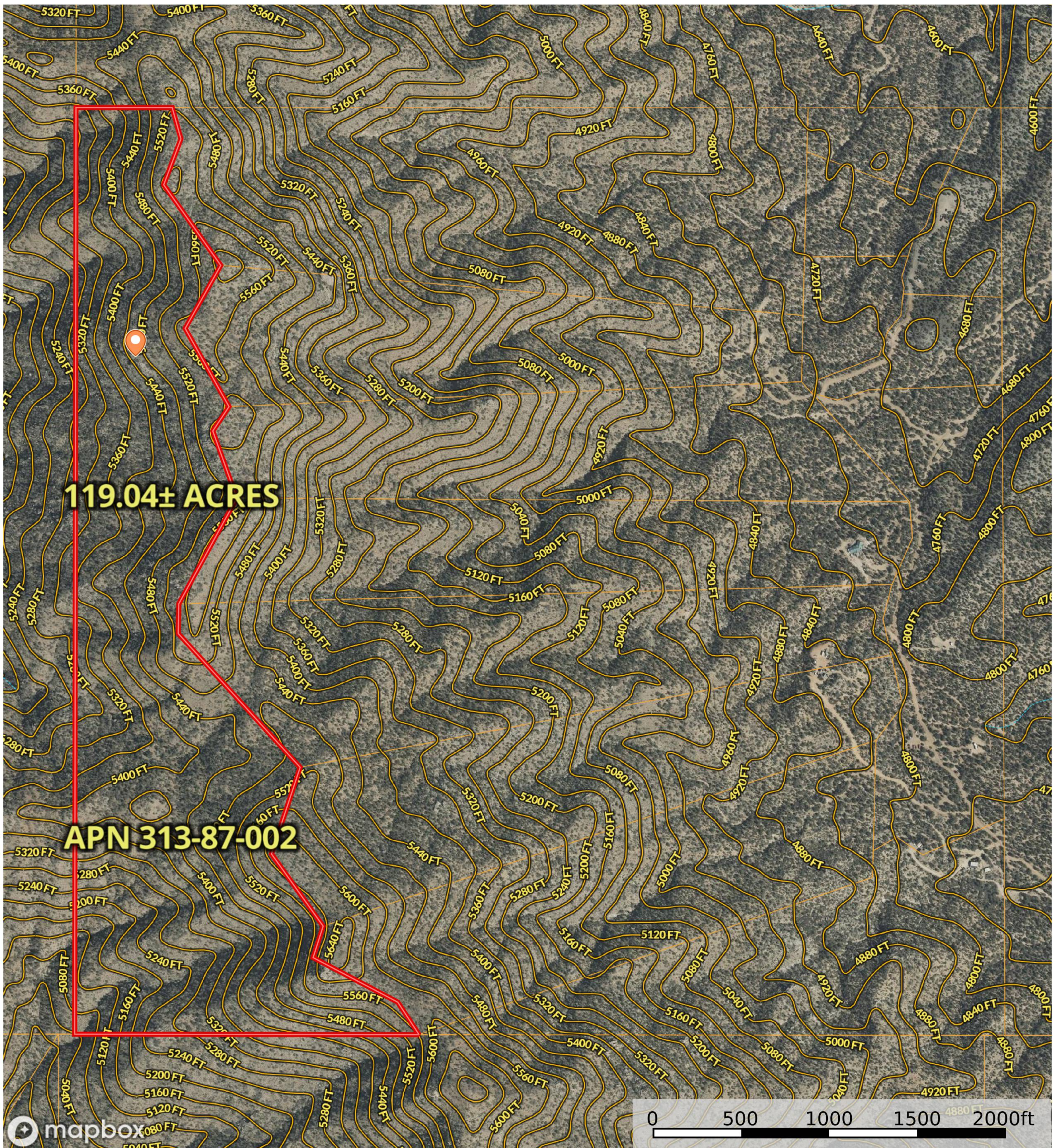
Rick and Minh Truong Estate

Mohave County, Arizona, 439.02 AC +/-



Rick and Minh Truong Estate

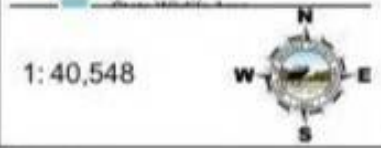
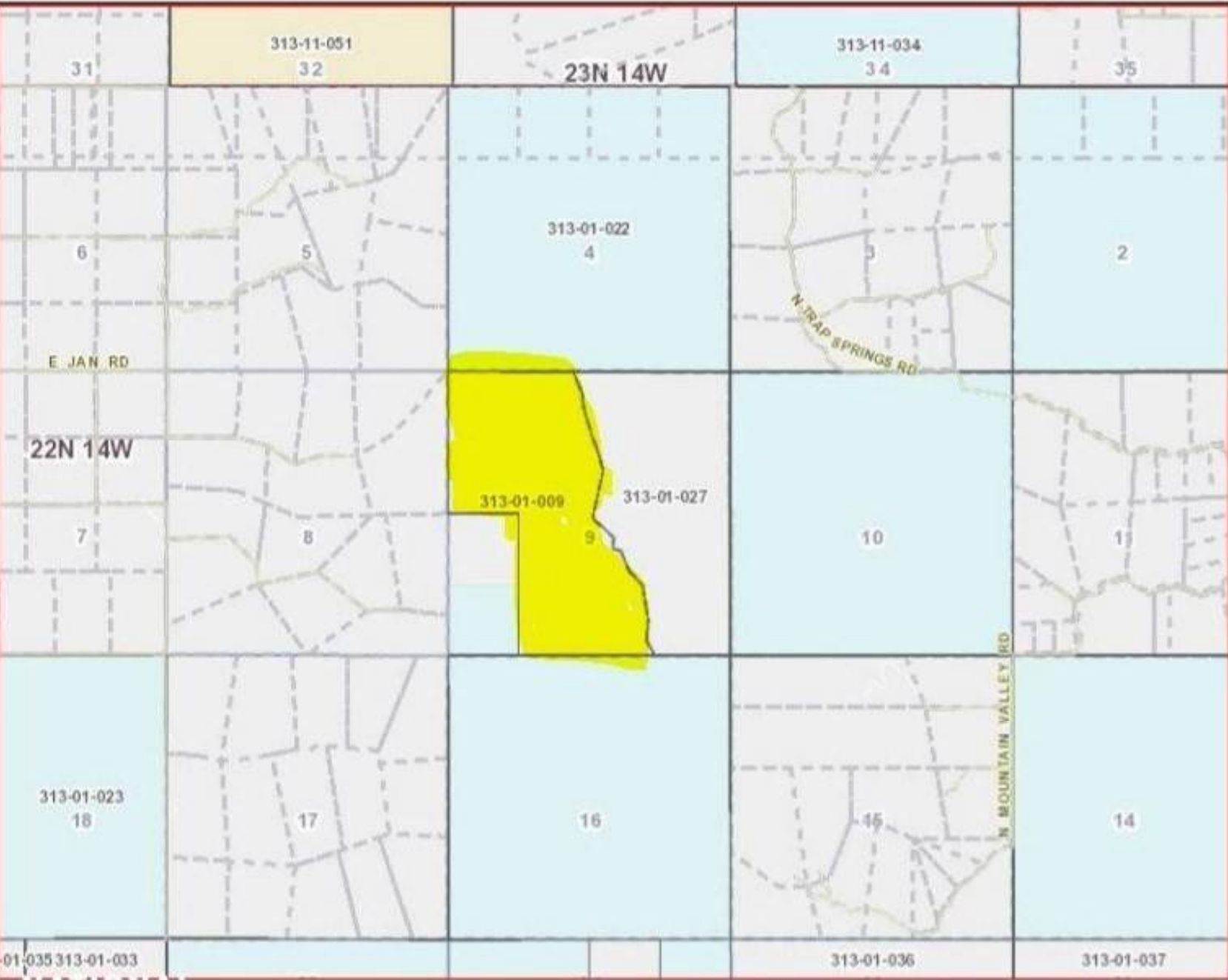
Mohave County, Arizona, 439.02 AC +/-



- | | | | | | | | | | |
|-------------|--------------|----------|---------------------|-------------------|----------------------|----------------------|----------------|----------------|-----------------|
| 320 ± acres | 113.92± Acre | Boundary | Voltage Unavailable | Voltage 0 - 99 KV | Voltage 100 - 161 KV | Voltage 220 - 287 KV | Voltage 345 KV | Voltage 500 KV | Voltage 735 KV+ |
| Aerodrome | Heliport | Seaport | Gilder Port | Ultra Light | Ballon Port | Stream, Intermittent | River/Creek | Water Body | |



- Legend**
- ADOT Mileposts
 - COUNTY Mileposts
 - Sign Post Exists
 - Calculated Measure
 - Highways
 - Main Arterials
 - Collectors
 - Local
 - Railroad
 - Lots
 - City Limits (<1:120K)
 - City Limits (>1:120K)
 - County Boundary
 - Surrounding Counties
 - Township/Range
 - Section
 - Surface Management**
 - Bureau of Land Management
 - Bureau of Reclamation
 - County
 - Indian Lands
 - Local or State Parks
 - Military
 - National Parks Service
 - Other
 - Private
 - State



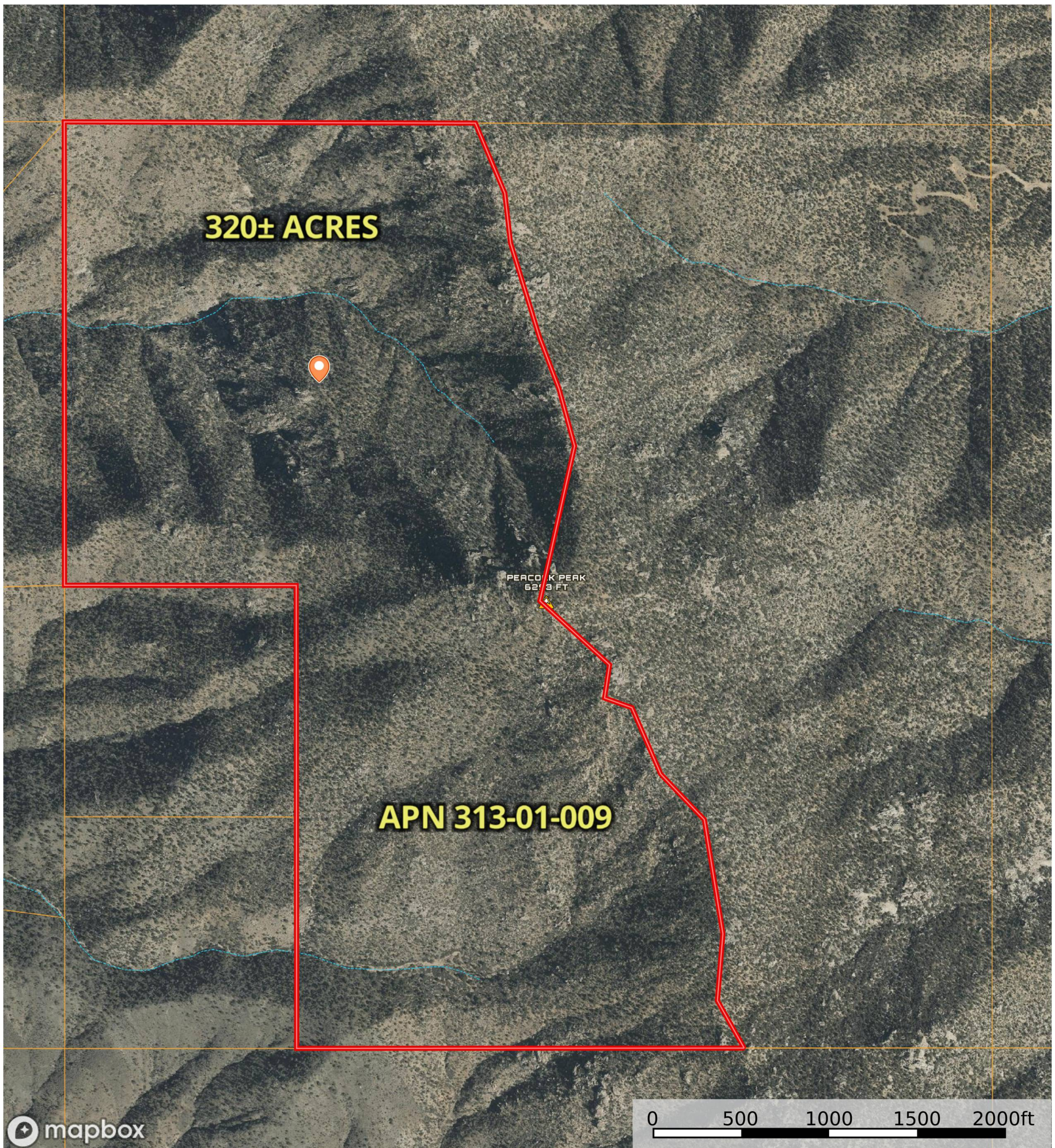
0 100.0 6,757.9 Feet
 1" = 1000' (Graphic Scale)
 © 2021 Mohave County Information Technology
 Map Created: 10/14/2021

This map is a user generated static output from the Mohave County interactive Map Viewer and is for general reference only. Data layers that appear on this map may or may not be accurate, current, or otherwise reliable. THIS MAP IS NOT TO BE USED FOR NAVIGATION, AS A LEGAL DOCUMENT, FOR PROPERTY DESCRIPTIONS, OR DETERMINATION OF LEGAL TITLE, AND SHOULD NEVER BE SUBSTITUTED FOR SURVEY OR DEED INFORMATION. The user agrees to comply with the Limitation of Use, and Assumption of Risk as stated in the full disclaimer at <https://gis.mohave.gov>

Notes:

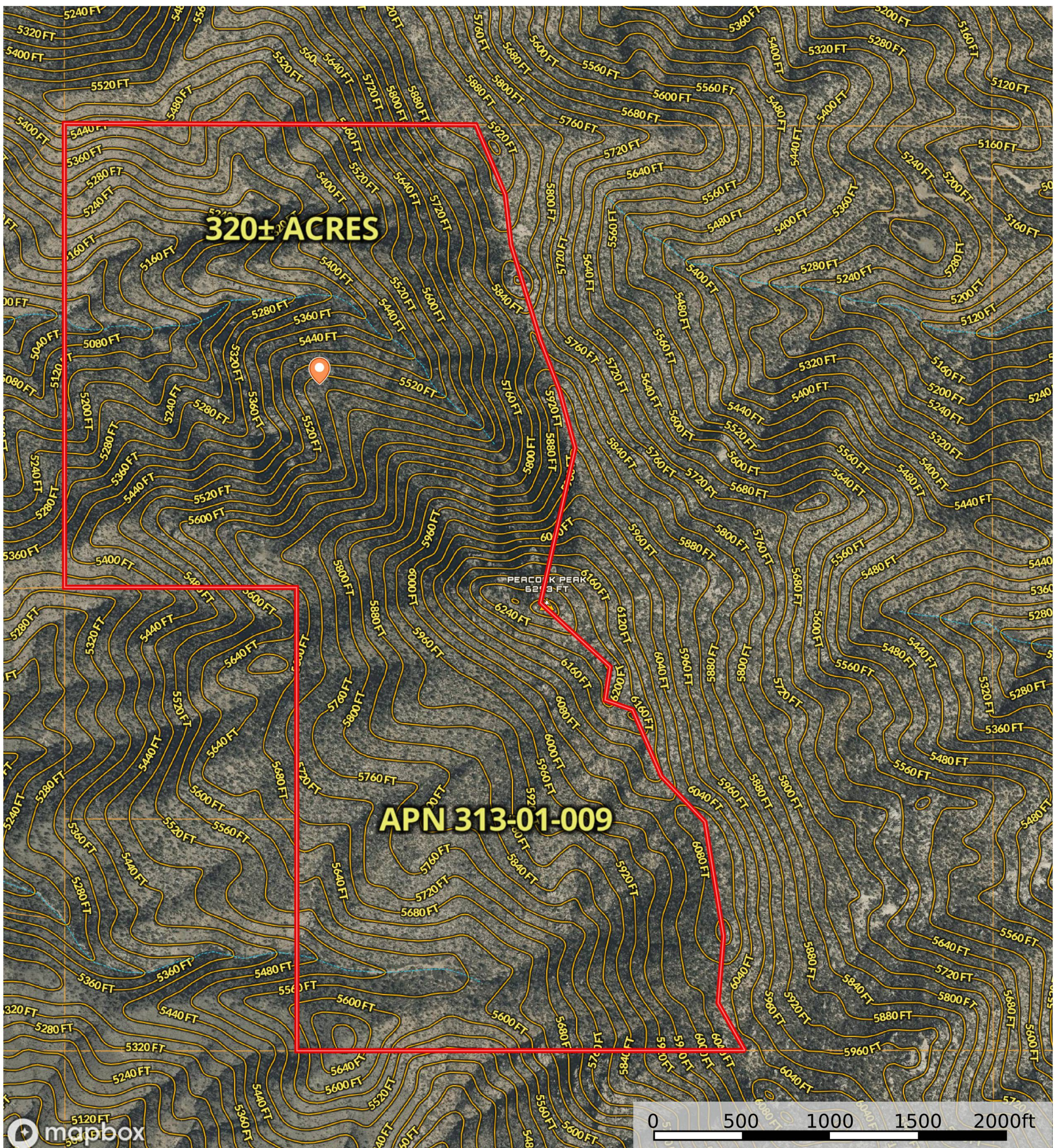
Rick and Minh Truong Estate

Mohave County, Arizona, 439.02 AC +/-



Rick and Minh Truong Estate

Mohave County, Arizona, 439.02 AC +/-



- | | | | | | | | | | |
|-------------|--------------|----------|---------------------|-------------------|----------------------|----------------------|----------------|----------------|-----------------|
| 320 ± acres | 113.92± Acre | Boundary | Voltage Unavailable | Voltage 0 - 99 KV | Voltage 100 - 161 KV | Voltage 220 - 287 KV | Voltage 345 KV | Voltage 500 KV | Voltage 735 KV+ |
| Aerodrome | Heliport | Seaport | Gilder Port | Ultra Light | Ballon Port | Stream, Intermittent | River/Creek | Water Body | |