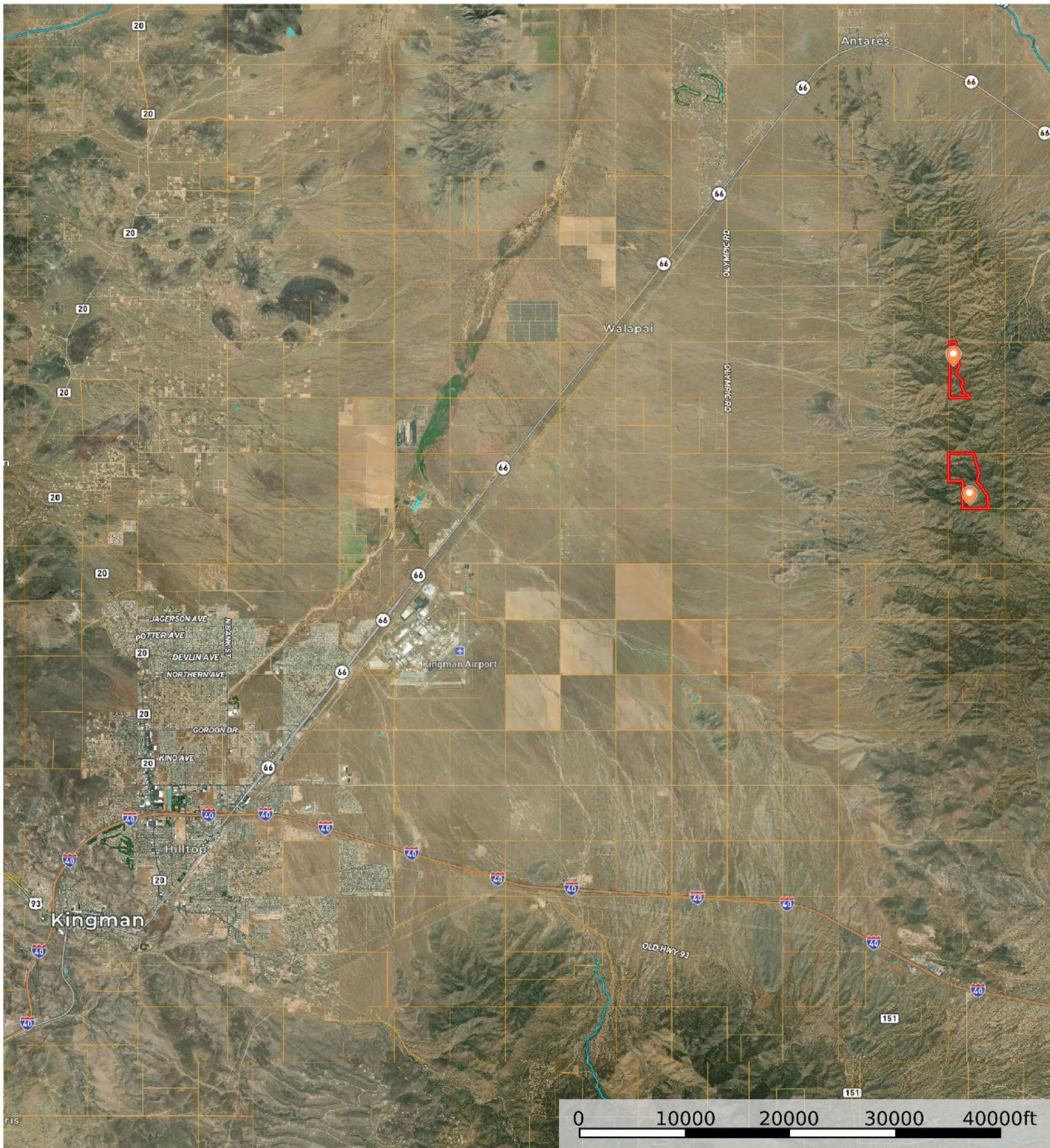


Rick and Minh Truong Estate

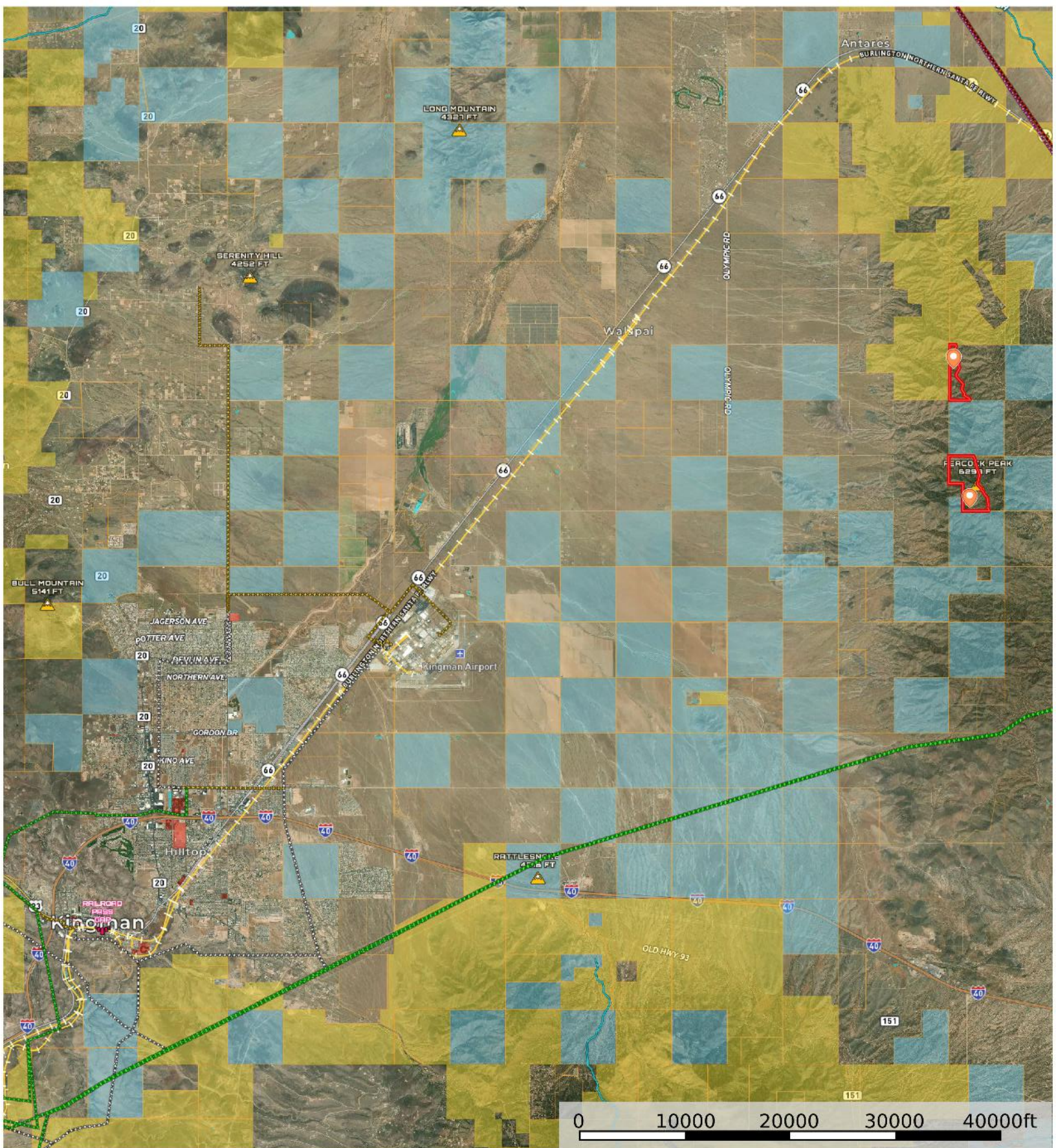
Mohave County, Arizona, 439.02 AC +/-



- 320 ± acres
- 113.92 ± Acre
- Boundary
- Stream, Intermittent
- River/Creek
- Water Body

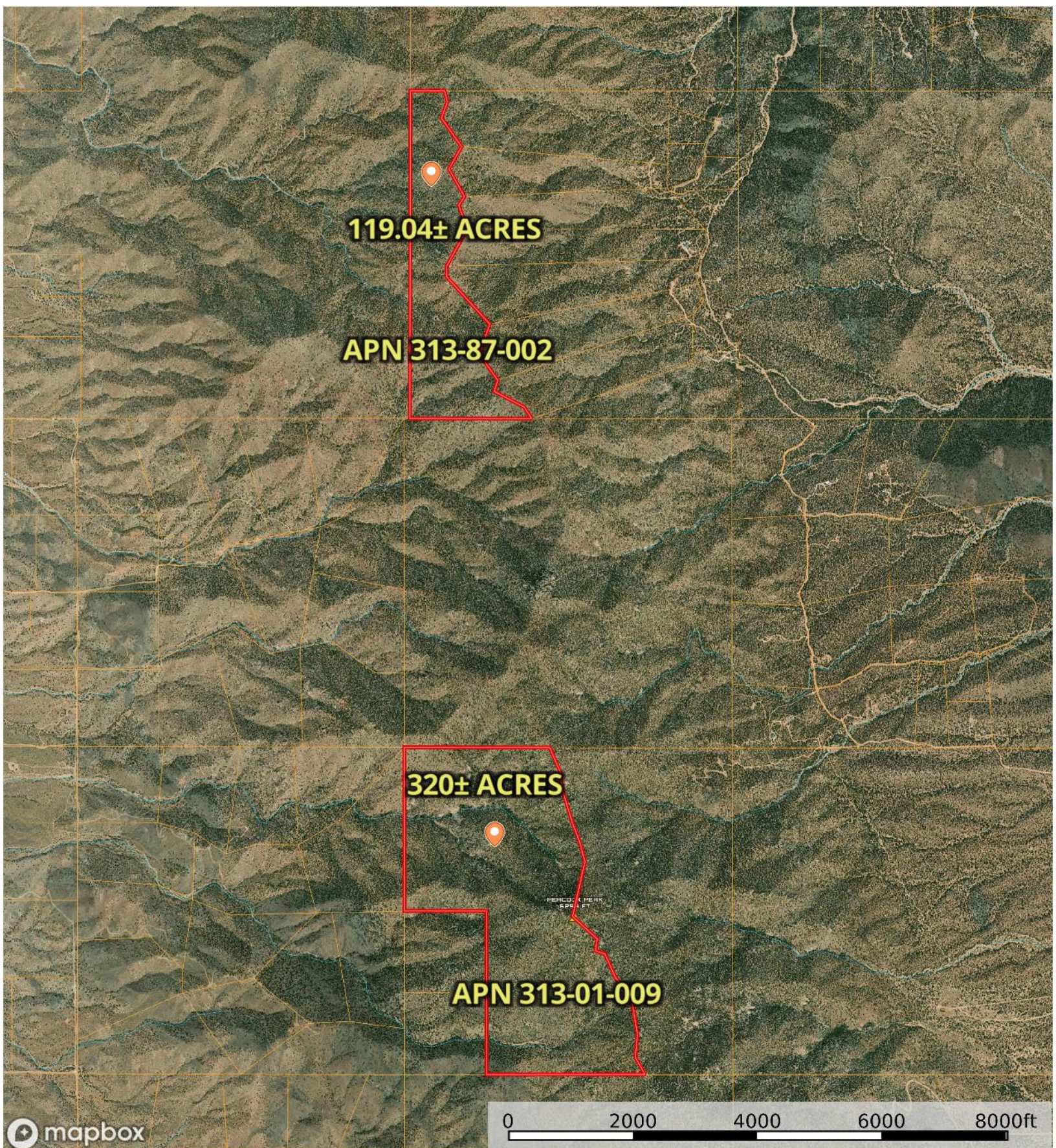
Rick and Minh Truong Estate

Mohave County, Arizona, 439.02 AC +/-



Rick and Minh Truong Estate

Mohave County, Arizona, 439.02 AC +/-

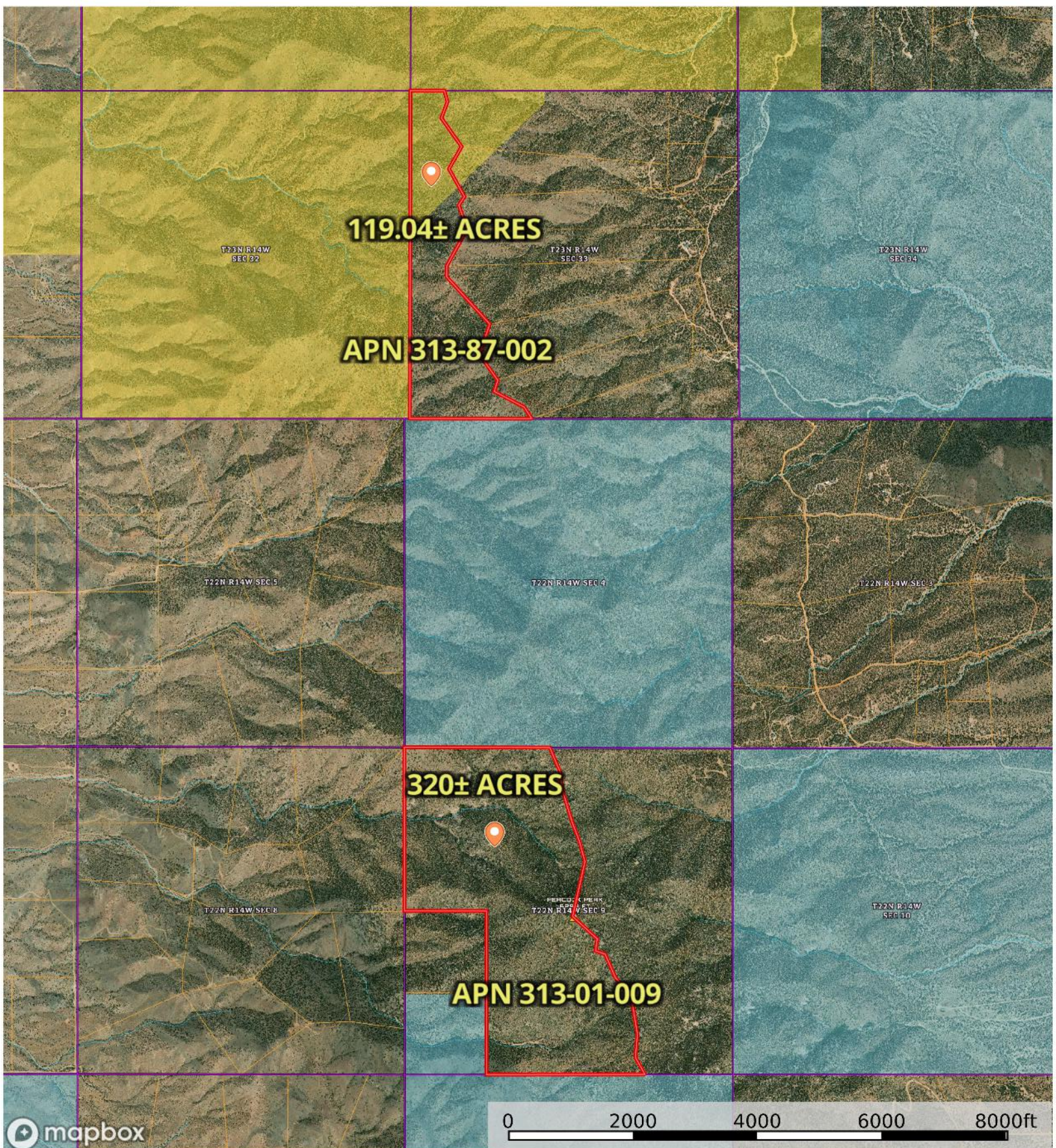


- 320 ± acres
- 113.92± Acre
- Boundary
- Stream, Intermittent
- River/Creek
- Water Body
- Voltage Unavailable
- Voltage 0 - 99 KV
- Voltage 100 - 161 KV
- Voltage 220 - 287 KV
- Voltage 345 KV
- Voltage 500 KV
- Voltage 735 KV+
- Aerodrome
- Heliport
- Seaport
- Glider Port
- Ultra Light
- Ballon Port

The information contained herein was obtained from sources deemed to be reliable. Land id® Services makes no warranties or guarantees as to the completeness or accuracy thereof.

Rick and Minh Truong Estate

Mohave County, Arizona, 439.02 AC +/-



mapbox



- | | | | | | | | | | |
|----------------------|----------------------|----------------------|----------------|----------------|-------------------|---------------|-------------|-------------|---------------------|
| 320 ± acres | 113.92± Acre | Boundary | Forest Service | State Land | Fish and Wildlife | National Park | Other | BLM | Local Government |
| Stream, Intermittent | River/Creek | Water Body | Aerodrome | Heliport | Seaport | Glider Port | Ultra Light | Ballon Port | Voltage Unavailable |
| Voltage 0 - 99 KV | Voltage 100 - 161 KV | Voltage 220 - 287 KV | Voltage 345 KV | Voltage 500 KV | Voltage 735 KV+ | | | | |

id. The information contained herein was obtained from sources deemed to be reliable. Land id® Services makes no warranties or guarantees as to the completeness or accuracy thereof.

119.04± ACRES

APN 313-87-002

320± ACRES

APN 313-01-009



Legend

- ADOT Mileposts
- COUNTY Mileposts
- Sign Post Exists
- Calculated Measure
- Highways
- Main Arterials
- Collectors
- Local
- Railroad
- Blocks
- Lots
- City Limits (>1:120K)
- County Boundary
- Surrounding Counties
- Township/Range
- Section
- Surface Management
 - Bureau of Land Management
 - Bureau of Reclamation
 - County
 - Indian Lands
 - Local or State Parks
 - Military
 - National Parks Service
 - Other
 - Private
 - State



1: 20,274



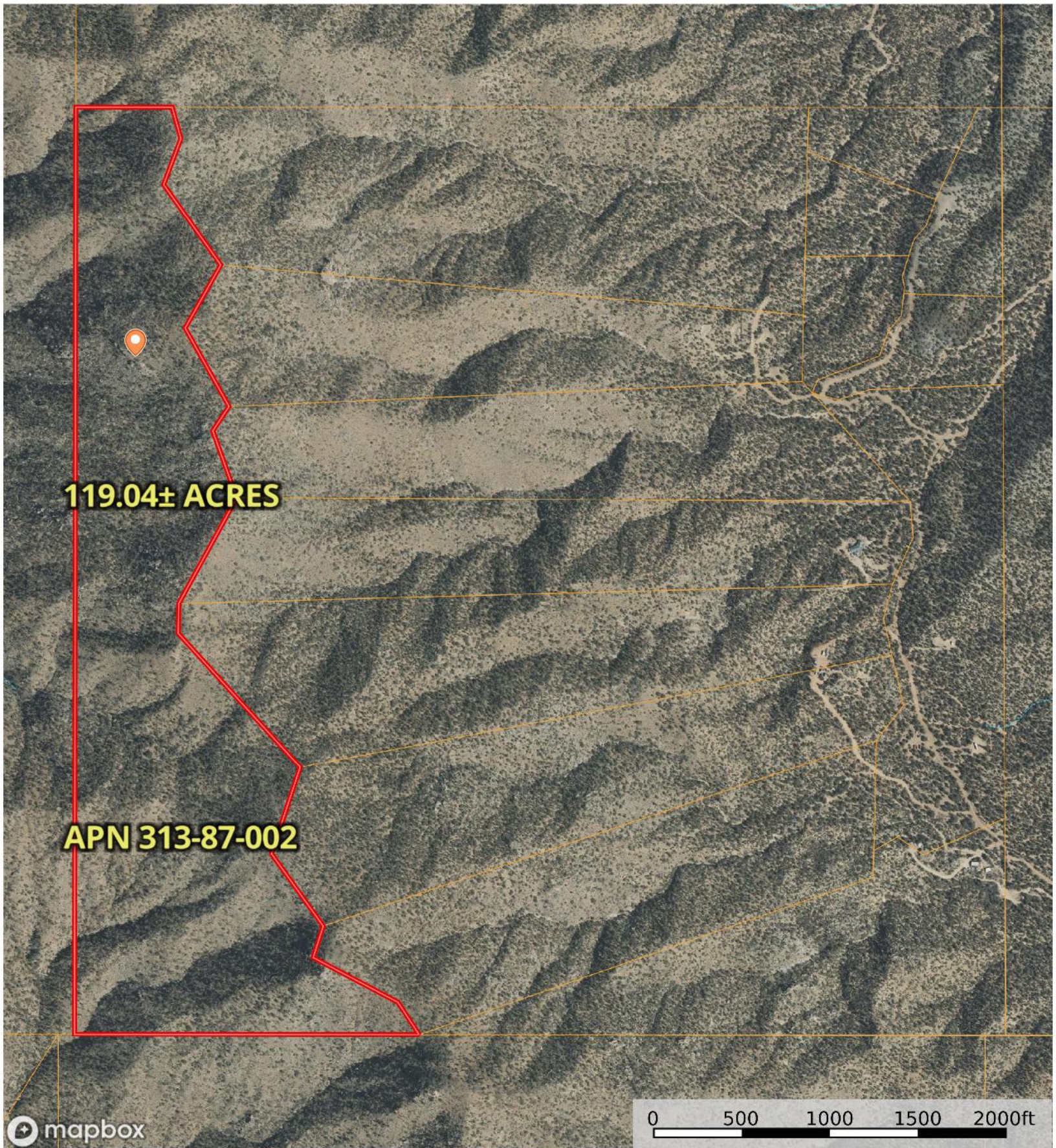
Map Created: 10/14/2021

This map is a user generated static output from the Mohave County interactive Map Viewer and is for general reference only. Data layers that appear on this map may or may not be accurate, current, or otherwise reliable. THIS MAP IS NOT TO BE USED FOR NAVIGATION, AS A LEGAL DOCUMENT, FOR PROPERTY DESCRIPTIONS, OR DETERMINATION OF LEGAL TITLE, AND SHOULD NEVER BE SUBSTITUTED FOR SURVEY OR DEED INFORMATION. The user agrees to comply with the Limitation of Use, and Assumption of Risk as stated in the full disclaimer at <https://gis.mohave.gov>

Notes:

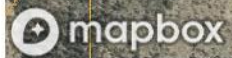
Rick and Minh Truong Estate

Mohave County, Arizona, 439.02 AC +/-



119.04± ACRES

APN 313-87-002

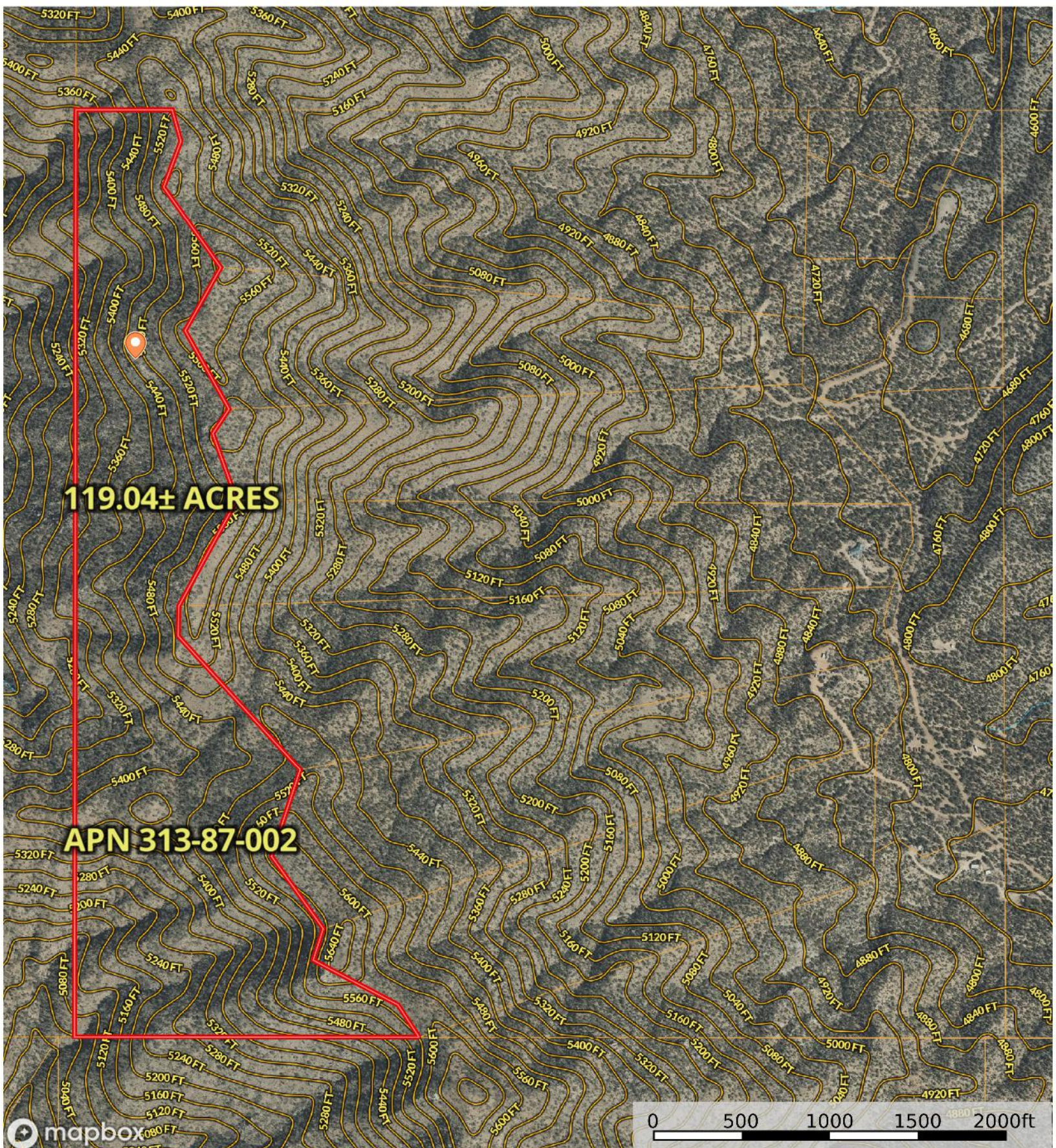


- 320 ± acres
- 113.92± Acre
- Boundary
- Stream, Intermittent
- River/Creek
- Water Body
- Voltage Unavailable
- Voltage 0 - 99 KV
- Voltage 100 - 161 KV
- Voltage 220 - 287 KV
- Voltage 345 KV
- Voltage 500 KV
- Voltage 735 KV+
- Aerodrome
- Heliport
- Seaport
- Glider Port
- Ultra Light
- Ballon Port

id. The information contained herein was obtained from sources deemed to be reliable. Land id® Services makes no warranties or guarantees as to the completeness or accuracy thereof.

Rick and Minh Truong Estate

Mohave County, Arizona, 439.02 AC +/-



119.04± ACRES

APN 313-87-002

mapbox

0 500 1000 1500 2000ft

320 ± acres	113.92 ± Acre	Boundary	Voltage Unavailable	Voltage 0 - 99 KV	Voltage 100 - 161 KV	Voltage 220 - 287 KV	Voltage 345 KV	Voltage 500 KV	Voltage 735 KV+
Aerodrome	Heliport	Seaport	Glider Port	Ultra Light	Ballon Port	Stream, Intermittent	River/Creek	Water Body	

The information contained herein was obtained from sources deemed to be reliable. Land id. Services makes no warranties or guarantees as to the completeness or accuracy thereof.

119.04± ACRES

APN 313-87-002

320± ACRES

APN 313-01-009



Search by Parcel ID or Owner

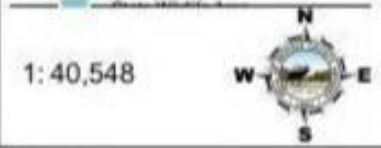
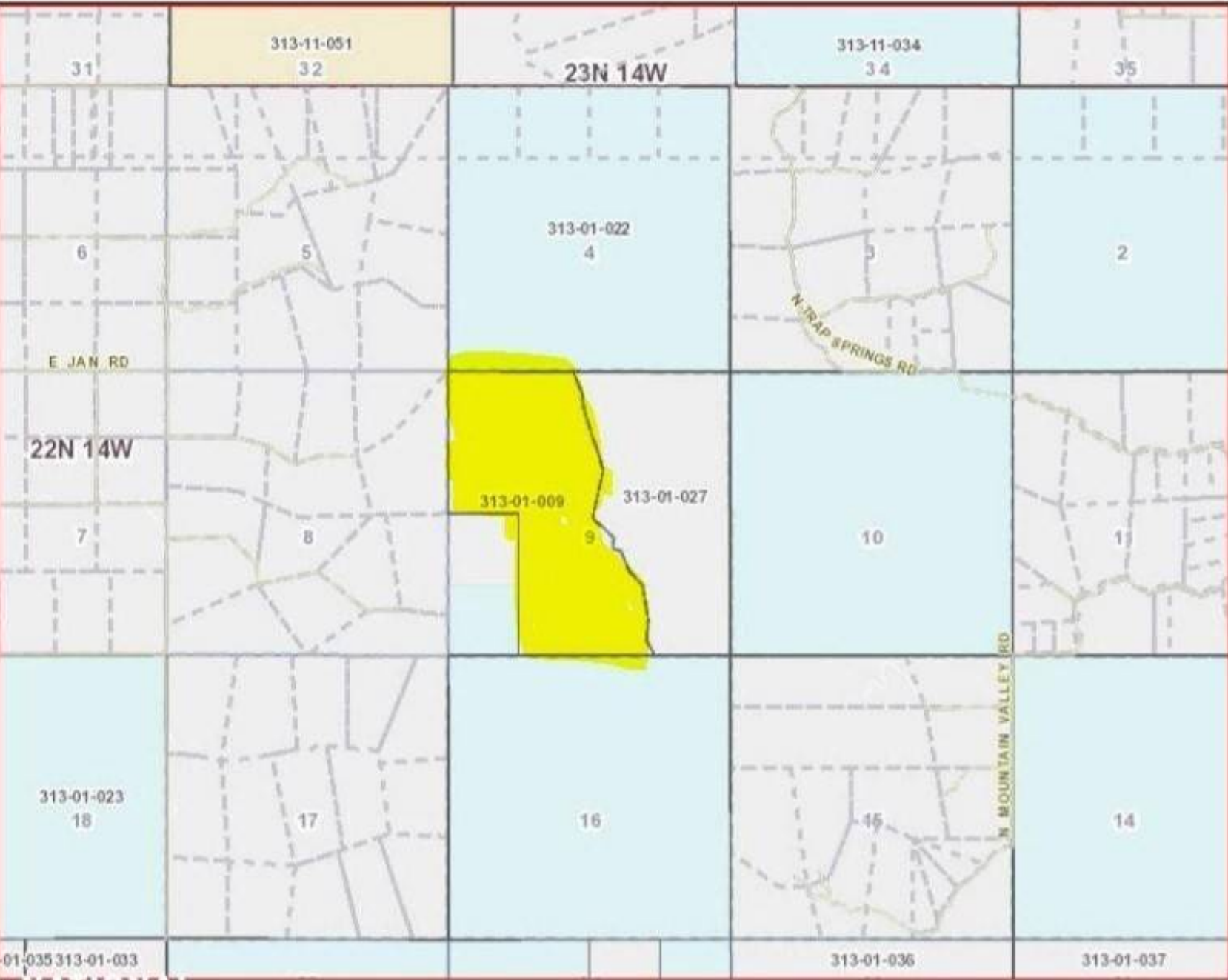
Historic US-66

66

E Andy Devine Ave



- Legend**
- ADOT Mileposts
 - COUNTY Mileposts
 - Sign Post Exists
 - Calculated Measure
 - Highways
 - Main Arterials
 - Collectors
 - Local
 - Railroad
 - Lots
 - City Limits (<1:120K)
 - City Limits (>1:120K)
 - County Boundary
 - Surrounding Counties
 - Township/Range
 - Section
 - Surface Management**
 - Bureau of Land Management
 - Bureau of Reclamation
 - County
 - Indian Lands
 - Local or State Parks
 - Military
 - National Parks Service
 - Other
 - Private
 - State



0 100.0 6,757.9 Feet
 1" = 1 mile
 © 2021 Mohave County Information Technology

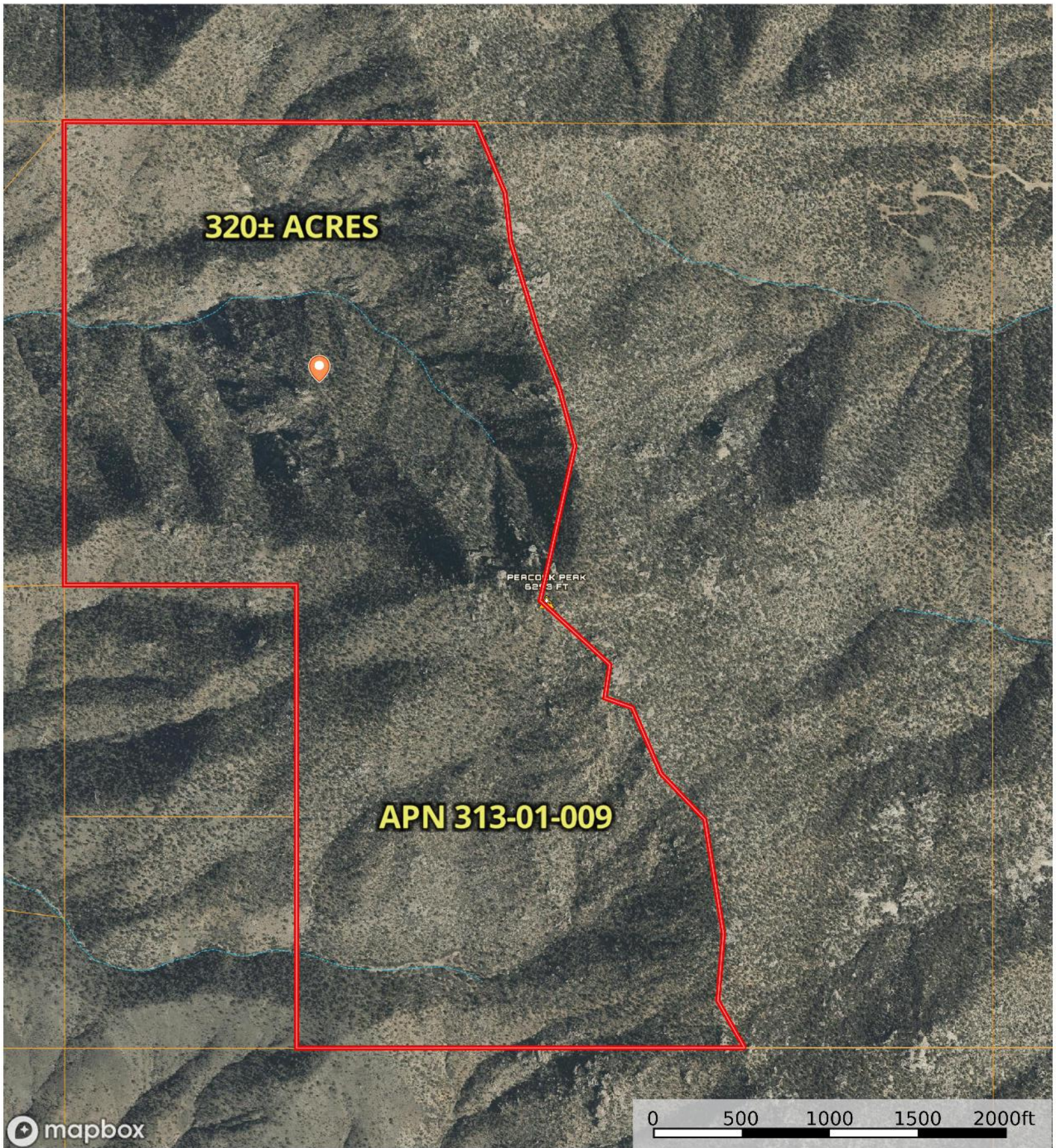
Map Created: 10/14/2021

This map is a user generated static output from the Mohave County interactive Map Viewer and is for general reference only. Data layers that appear on this map may or may not be accurate, current, or otherwise reliable. THIS MAP IS NOT TO BE USED FOR NAVIGATION, AS A LEGAL DOCUMENT, FOR PROPERTY DESCRIPTIONS, OR DETERMINATION OF LEGAL TITLE, AND SHOULD NEVER BE SUBSTITUTED FOR SURVEY OR DEED INFORMATION. The user agrees to comply with the Limitation of Use, and Assumption of Risk as stated in the full disclaimer at <https://gis.mohave.gov>

Notes:

Rick and Minh Truong Estate

Mohave County, Arizona, 439.02 AC +/-



mapbox

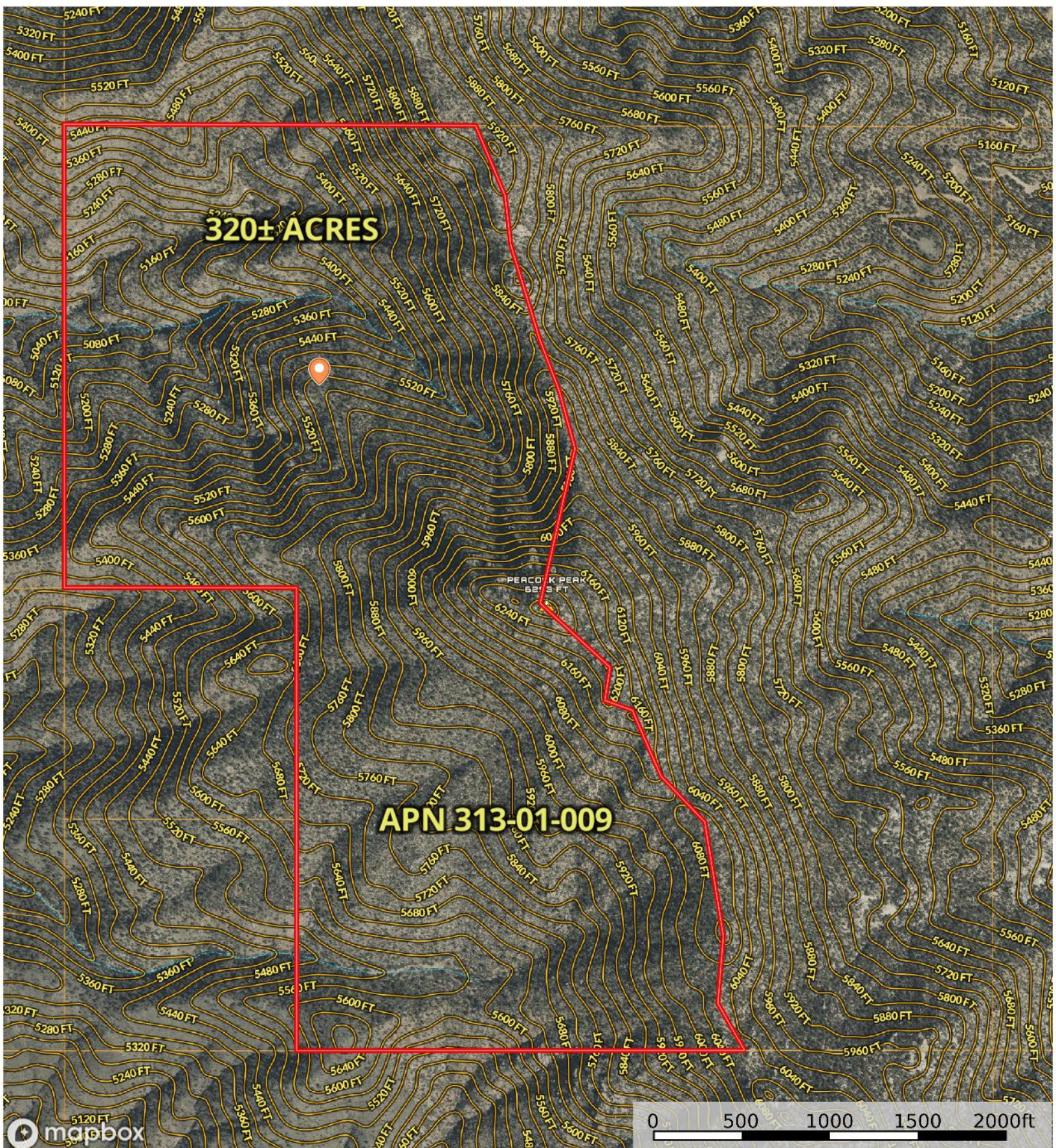
0 500 1000 1500 2000ft

- 320 ± acres
- 113.92± Acre
- Boundary
- Stream, Intermittent
- River/Creek
- Water Body
- Voltage Unavailable
- Voltage 0 - 99 KV
- Voltage 100 - 161 KV
- Voltage 220 - 287 KV
- Voltage 345 KV
- Voltage 500 KV
- Voltage 735 KV+
- Aerodrome
- Heliport
- Seaport
- Glider Port
- Ultra Light
- Ballon Port

id. The information contained herein was obtained from sources deemed to be reliable. Land id. Services makes no warranties or guarantees as to the completeness or accuracy thereof.

Rick and Minh Truong Estate

Mohave County, Arizona, 439.02 AC +/-



- 📍 320 ± acres
- 📍 113.92 ± Acre
- 🔺 Boundary
- ⚡ Voltage Unavailable
- ⚡ Voltage 0 - 99 KV
- ⚡ Voltage 100 - 161 KV
- ⚡ Voltage 220 - 287 KV
- ⚡ Voltage 345 KV
- ⚡ Voltage 500 KV
- ⚡ Voltage 735 KV+
- 🌀 Aerodrome
- 🌳 Heliport
- 🚢 Seaport
- 🛩️ Glider Port
- 🔴 Ultra Light
- 🟡 Ballon Port
- 🌊 Stream, Intermittent
- 🌊 River/Creek
- 💧 Water Body