



Field Report

Minnesota • Steele County

Page / 25 • 106N / 20W

61.98 acres

Generated: 4/12/2026

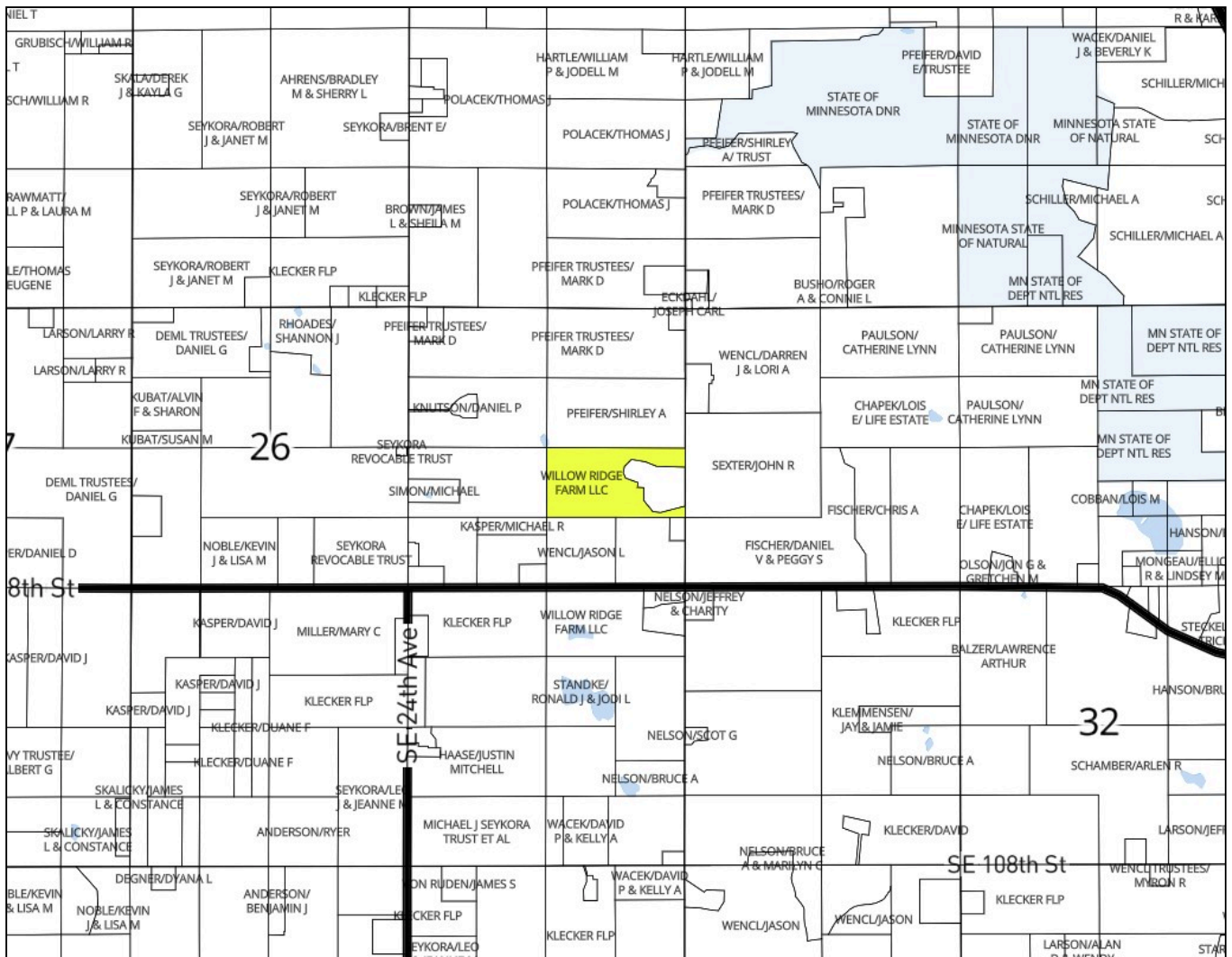
Plat Map



106N

Somerset

20W

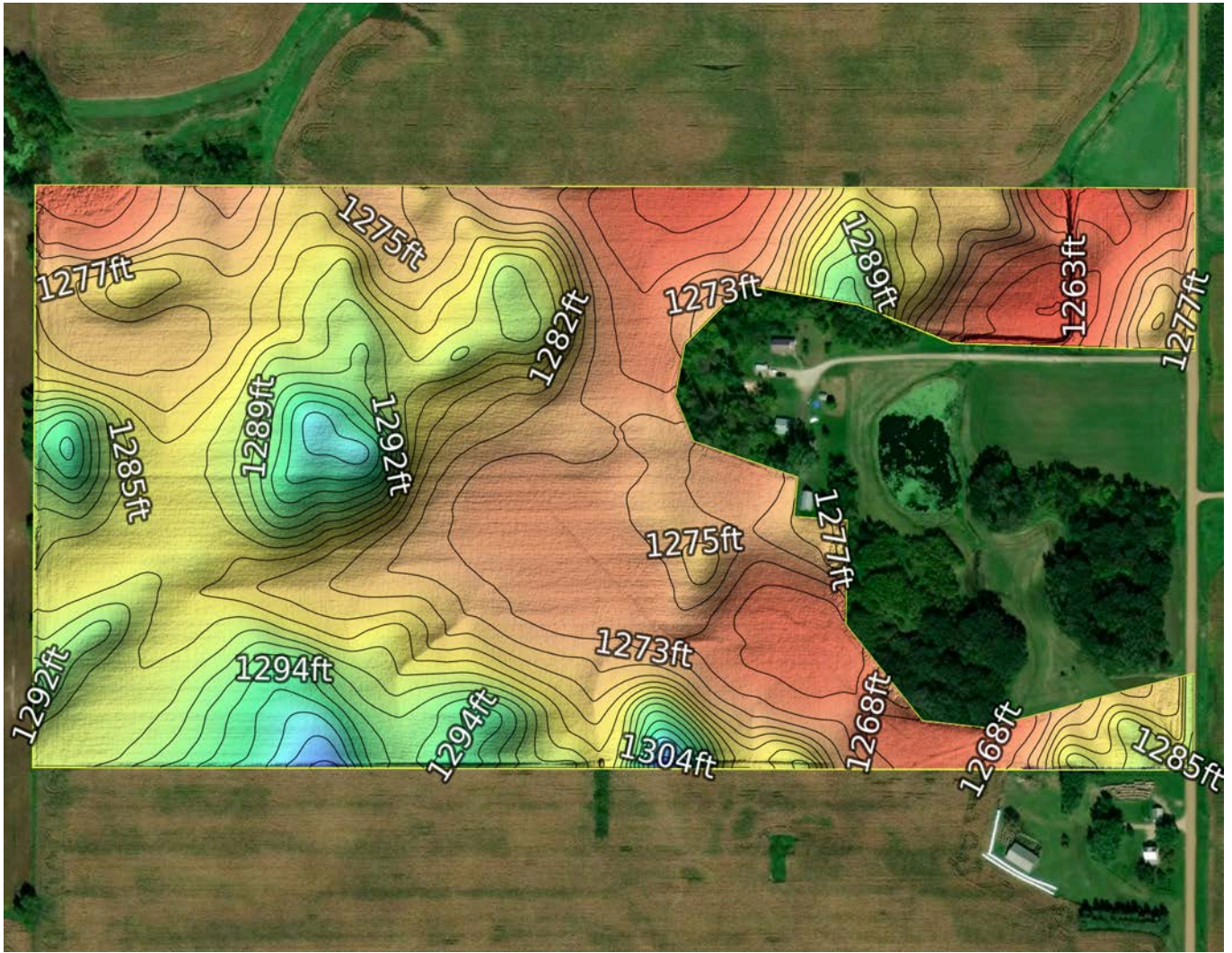


Minnesota / Steele County
43.9554, -93.1709
Somerset / 25
106N / 20W
61.98 acres

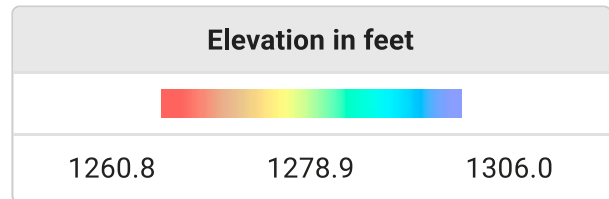


Generated: 4/12/2026

Topography



Minimum Elevation	1260.8 feet
Maximum Elevation	1306.0 feet
Mean Elevation	1278.9 feet
Standard Deviation	8.5 feet
Elevation Range	45.3 feet
Contour Interval	20 feet



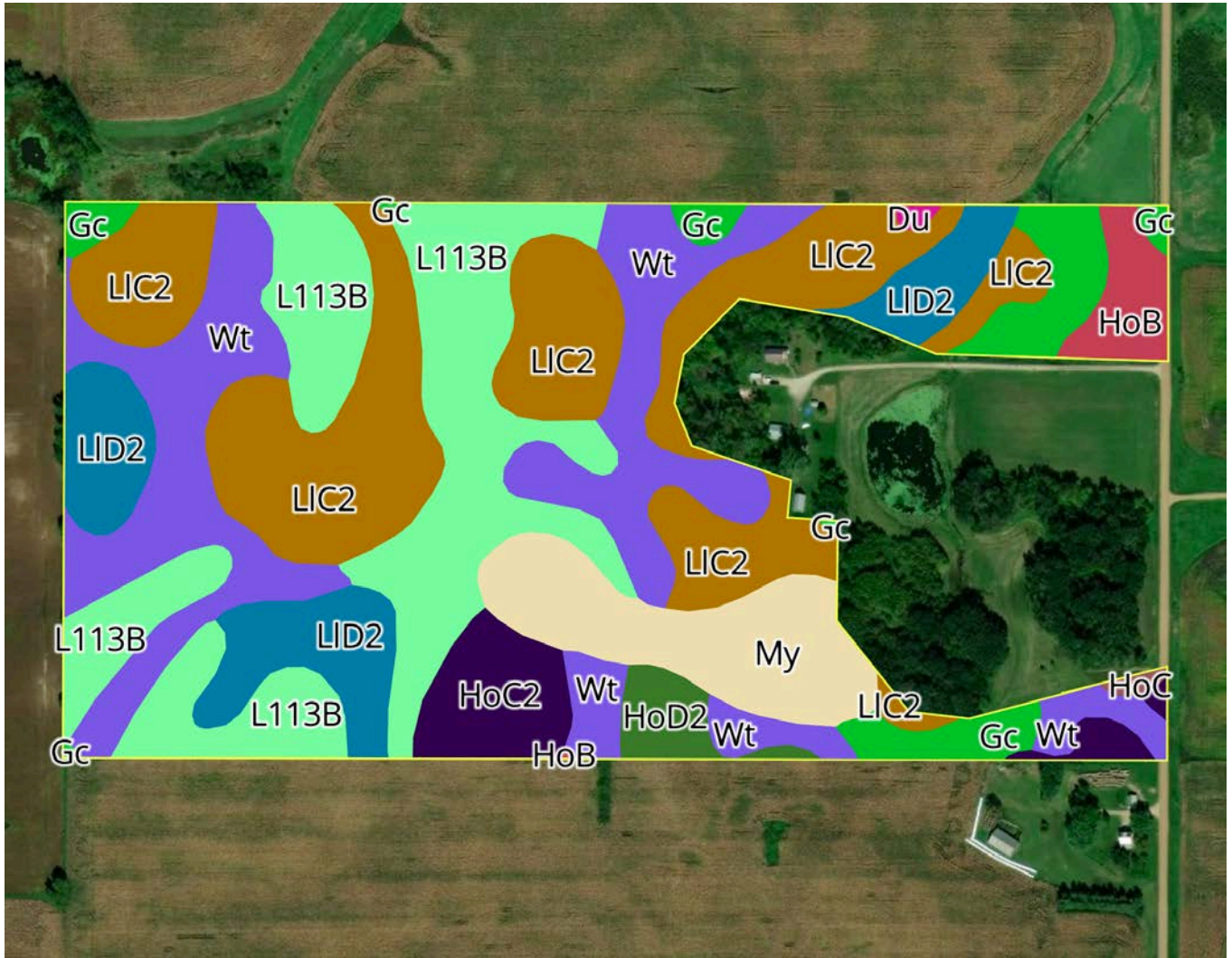
Data Source: AWS Open Data Registry - USGS 3DEP

Minnesota / Steele County
 43.9554, -93.1709
 Somerset / 25
 106N / 20W
 61.98 acres



Generated: 4/12/2026

Soil Map



Soil Code	Soil Description	Acres	Drainage Class	CPI	WT Depth
LIC2	Lester loam, 6 to 10 percent slopes, moderately eroded	15.7	Well drained	76	55.1

Soil Horizon Details

HORIZON	TOP	BOTTOM	THICKNESS	SAND	SILT	CLAY	KSAT
Ap	0.00	5.91	5.91	39%	37%	24%	9.17
Bt	5.91	38.19	32.28	33%	37%	30%	2.82
C	38.19	78.74	40.55	38%	37%	25%	9.17

Soil Code	Soil Description	Acres	Drainage Class	CPI	WT Depth
L113B	Reedslake-Le Sueur complex, 1 to 6 percent slopes	13.7	Moderately well drained	98	17.7

Soil Horizon Details

HORIZON	TOP	BOTTOM	THICKNESS	SAND	SILT	CLAY	KSAT
Ap	0.00	5.91	5.91	45%	33%	22%	9.17
A	5.91	14.96	9.06	45%	33%	22%	9.17
Bt	14.96	33.07	18.11	43%	31%	26%	9.17
Bk	33.07	53.94	20.87	36%	38%	26%	9.17
C	53.94	78.74	24.80	38%	37%	25%	9.17

Soil Code	Soil Description	Acres	Drainage Class	CPI	WT Depth
Wt	Webster clay loam, 0 to 2 percent slopes	13.1	Poorly drained	93	N/A

Soil Horizon Details

HORIZON	TOP	BOTTOM	THICKNESS	SAND	SILT	CLAY	KSAT
Ap	0.00	9.84	9.84	25%	42%	33%	2.82
A	9.84	20.08	10.24	25%	42%	33%	2.82
Bg	20.08	42.13	22.05	35%	37%	28%	2.82
Cg	42.13	78.74	36.61	44%	35%	21%	9.17

Soil Code	Soil Description	Acres	Drainage Class	CPI	WT Depth
LID2	Lester loam, 10 to 16 percent slopes, moderately eroded	5.7	Well drained	67	63.0

Soil Horizon Details

HORIZON	TOP	BOTTOM	THICKNESS	SAND	SILT	CLAY	KSAT
Ap	0.00	5.91	5.91	39%	37%	24%	9.17
Bt	5.91	38.19	32.28	33%	37%	30%	2.82
C	38.19	78.74	40.55	38%	37%	25%	9.17

Soil Code	Soil Description	Acres	Drainage Class	CPI	WT Depth
My	Klossner muck, 0 to 1 percent slopes	5.1	Very poorly drained	77	N/A

Soil Horizon Details

HORIZON	TOP	BOTTOM	THICKNESS	SAND	SILT	CLAY	KSAT
Oap	0.00	8.66	8.66	N/A	N/A	N/A	21.88
Oa	8.66	27.17	18.50	N/A	N/A	N/A	21.88
2A	27.17	46.46	19.29	14%	53%	33%	2.82
2Cg	46.46	78.74	32.28	19%	54%	27%	2.82

Soil Code	Soil Description	Acres	Drainage Class	CPI	WT Depth
Gc	Glencoe clay loam, 0 to 1 percent slopes	3.4	Very poorly drained	86	N/A

Soil Horizon Details

HORIZON	TOP	BOTTOM	THICKNESS	SAND	SILT	CLAY	KSAT
Ap	0.00	9.06	9.06	22%	45%	33%	2.82
A	9.06	38.98	29.92	26%	41%	33%	2.82
Bg	38.98	50.00	11.02	24%	45%	31%	2.82
Cg	50.00	78.74	28.74	35%	37%	28%	2.82

Soil Code	Soil Description	Acres	Drainage Class	CPI	WT Depth
HoC2	Hayden loam, 6 to 10 percent slopes, moderately eroded	2.8	Well drained	71	55.1

Soil Horizon Details

HORIZON	TOP	BOTTOM	THICKNESS	SAND	SILT	CLAY	KSAT
Ap	0.00	9.06	9.06	39%	37%	24%	9.17
E	9.06	12.99	3.94	39%	37%	24%	9.17
BE	12.99	18.11	5.12	35%	37%	28%	2.82
Bt	18.11	43.31	25.20	33%	37%	30%	2.82
C	43.31	78.74	35.43	38%	37%	25%	9.17

Soil Code	Soil Description	Acres	Drainage Class	CPI	WT Depth
HoB	Hayden loam, 2 to 6 percent slopes	1.3	Well drained	85	43.3

Soil Horizon Details

HORIZON	TOP	BOTTOM	THICKNESS	SAND	SILT	CLAY	KSAT
Ap	0.00	9.06	9.06	39%	37%	24%	9.17
E	9.06	12.99	3.94	39%	37%	24%	9.17
BE	12.99	18.11	5.12	35%	37%	28%	2.82
Bt	18.11	43.31	25.20	33%	37%	30%	2.82
C	43.31	78.74	35.43	38%	37%	25%	9.17

Soil Code	Soil Description	Acres	Drainage Class	CPI	WT Depth
HoD2	Hayden loam, 10 to 22 percent slopes, moderately eroded	1.1	Well drained	62	63.0

Soil Horizon Details

HORIZON	TOP	BOTTOM	THICKNESS	SAND	SILT	CLAY	KSAT
Ap	0.00	9.06	9.06	39%	37%	24%	9.17
E	9.06	12.99	3.94	39%	37%	24%	9.17
BE	12.99	18.11	5.12	35%	37%	28%	2.82
Bt	18.11	43.31	25.20	33%	37%	30%	2.82
C	43.31	78.74	35.43	38%	37%	25%	9.17

Soil Code	Soil Description	Acres	Drainage Class	CPI	WT Depth
HoC	Hayden loam, 6 to 10 percent slopes	0.1	Well drained	71	55.1

Soil Horizon Details

HORIZON	TOP	BOTTOM	THICKNESS	SAND	SILT	CLAY	KSAT
A	0.00	1.97	1.97	39%	37%	24%	9.17
E	1.97	9.06	7.09	39%	37%	24%	9.17
BE	9.06	12.99	3.94	35%	37%	28%	2.82
Bt	12.99	43.31	30.31	33%	37%	30%	2.82
C	43.31	78.74	35.43	38%	37%	25%	9.17



Soil Code	Soil Description	Acres	Drainage Class	CPI	WT Depth
Du	Dundas silt loam, 0 to 2 percent slopes	0.1	Poorly drained	91	N/A

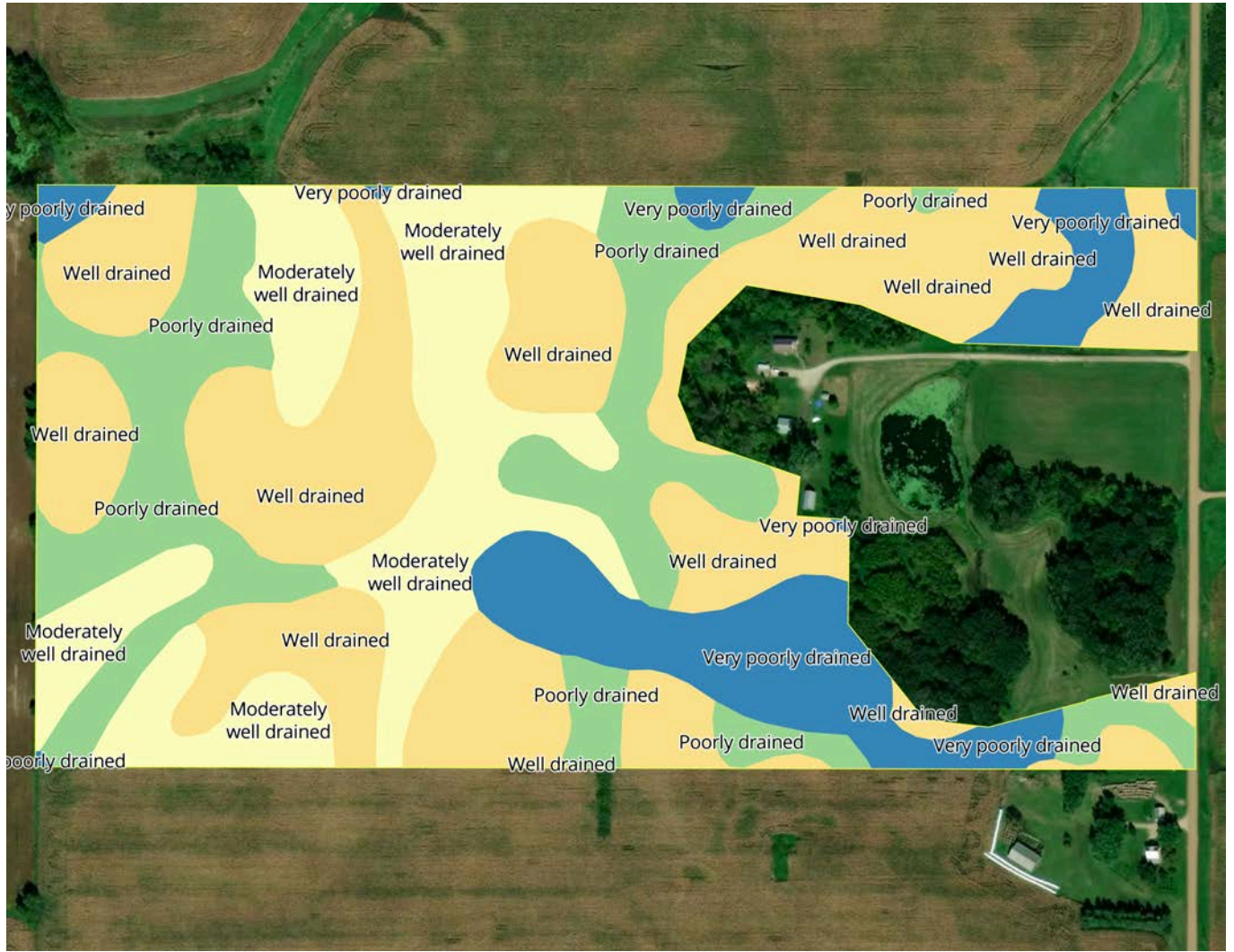
Soil Horizon Details


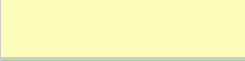


HORIZON	TOP	BOTTOM	THICKNESS	SAND	SILT	CLAY	KSAT
Ap	0.00	7.09	7.09	25%	55%	20%	9.17
A	7.09	9.84	2.76	25%	55%	20%	9.17
E	9.84	11.81	1.97	50%	40%	10%	9.17
Btg	11.81	37.80	25.98	35%	35%	30%	2.82
Cg	37.80	78.74	40.94	38%	37%	25%	9.17

Total Acres	62.0
CPI Weighted Average	84.0

Data Source: NRCS Soil Survey

Drainage Classification



Key	Drainage Class	Acres(%)
	Well drained	43.00%
	Moderately well drained	22.00%
	Poorly drained	21.00%
	Very poorly drained	14.00%

Data Source: NRCS Soil Survey

Minnesota / Steele County
 43.9554, -93.1709
 Somerset / 25
 106N / 20W
 61.98 acres



Generated: 4/12/2026

Wetland



Key	Classification Code	Type	Acres
	PEM1A	Freshwater Emergent Wetland	0.27
Total			0.27

Data Source: US Fish & Wildlife Service - National Wetland Inventory

Wetland data shown is for planning purposes only; please contact your local USDA NRCS office for an official wetland determination.



Data Source: 2008 FSA version of CLU boundaries

[Driving Directions](#)

43.9554, -93.1709



Minnesota / Steele County
43.9554, -93.1709
Somerset / 25
106N / 20W
61.98 acres



Generated: 4/12/2026