

FRANK P. HALL SUB-DIVISION
NEAR BELMONT N. C.
GASTON COUNTY
N. C.

Subscribed and sworn to
before me this 10th day of
1945.

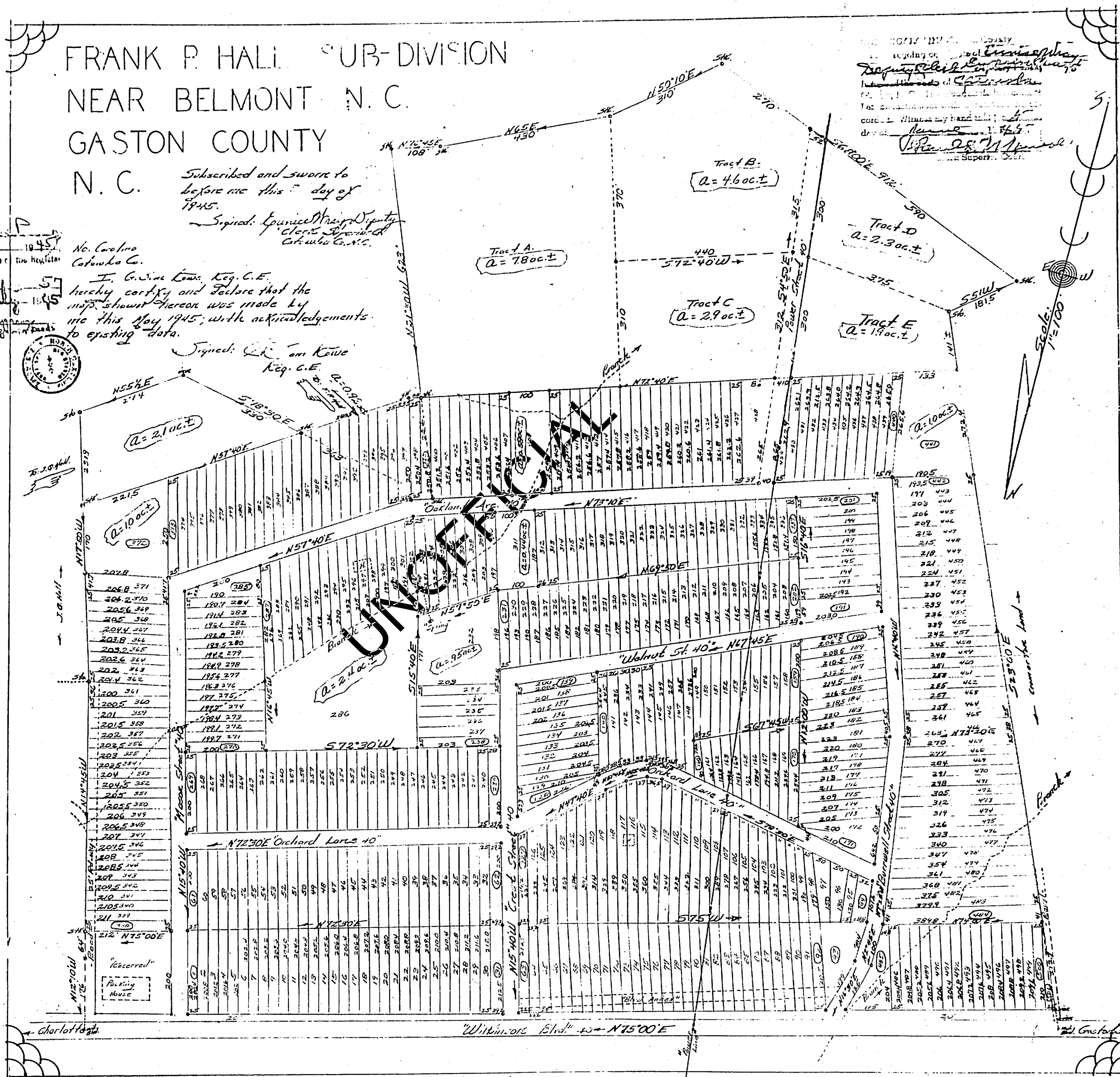
Signed: *[Signature]*
Clerk of Superior Court
Charlotte, N. C.

No. Carolina
Catawba Co.

I, G. W. Lewis, Reg. C. E.
hereby certify and declare that the
map shown hereon was made by
me this day 1945, with acknowledgements
to existing data.

Signed: *[Signature]*
G. W. Lewis
Reg. C. E.

Ind. for...
1945
Record and...
Gaston County, N. C.
[Signature]
Deputy



Recorded on...
[Signature]
Deputy

Scale: 1"=100'

