

**SPRING RIVER ADDITION  
TO MAMMOTH SPRING**

CONTAINING 14 LOTS; 13-26  
BEING 6.691 ACRES IN THE  
S.E. 1/4 OF THE S.E. 1/4 OF  
SEC. 8. AND 9.98 ACRES IN  
THE S.W. 1/4 OF THE S.W. 1/4  
OF SEC. 9 ALL IN TWP. 21N.  
R. 5W. FULTON CO. ARK.

*Book 105  
Page 105*

NOTE: 10' UTILITY E'MENT  
ON FRONT OF EACH LOT.

o -- SET I.P.

**SURVEYORS CERTIFICATION**

I HEREBY CERTIFY THAT THE PLAT SHOWN  
AND DESCRIBED HEREON IS THE RESULT OF  
A SURVEY MADE 3-29-1982  
THAT IT IS A TRUE AND ACCURATE SURVEY  
AND THE MONUMENTS WERE FOUND OR SET  
AS NOTED.

*Edward Murphy*

**OWNERS CERTIFICATION**

WE HEREBY CERTIFY THAT WE ARE THE OWNERS OF  
THE PROPERTY SHOWN AND DESCRIBED HEREON THAT  
WE ADOPT THE SUBDIVISION AND DEDICATE PERPETUAL  
USE OF ALL STREETS AND EASEMENTS AS NOTED.

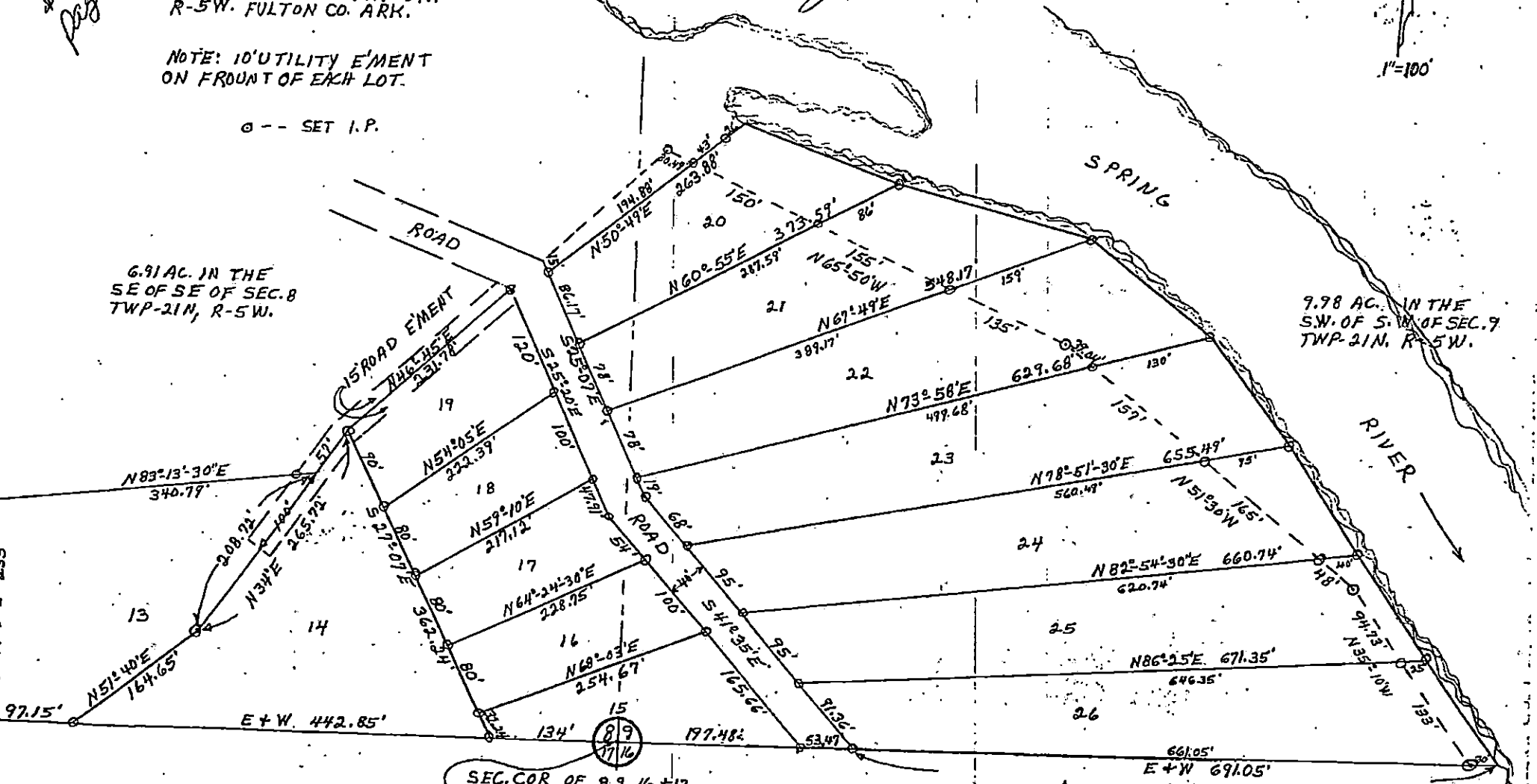
*Herbert J. Powell*

1"=100'



6.91 AC. IN THE  
SE OF SE OF SEC. 8  
TWP. 21N, R. 5W.

9.98 AC. IN THE  
S.W. OF S.W. OF SEC. 9  
TWP. 21N, R. 5W.



SEC. COR. OF 8, 9, 16 + 17  
TWP. 21N. R. 5W.

EDWARD MURPHY  
REGISTERED  
LAND SURVEYOR  
STATE OF  
ARKANSAS  
NO. 555  
*Edward Murphy*

Amended Bill of Assurance  
BOOK 10  
Page 41

FILED  
OFFICE OF THE  
FULTON COUNTY CLERK  
Dated 4-2-82  
Gene Maguffee, Clerk

Bill  
of Assurance  
BOOK 9  
Page 76  
929

BOOK 4  
Page 105