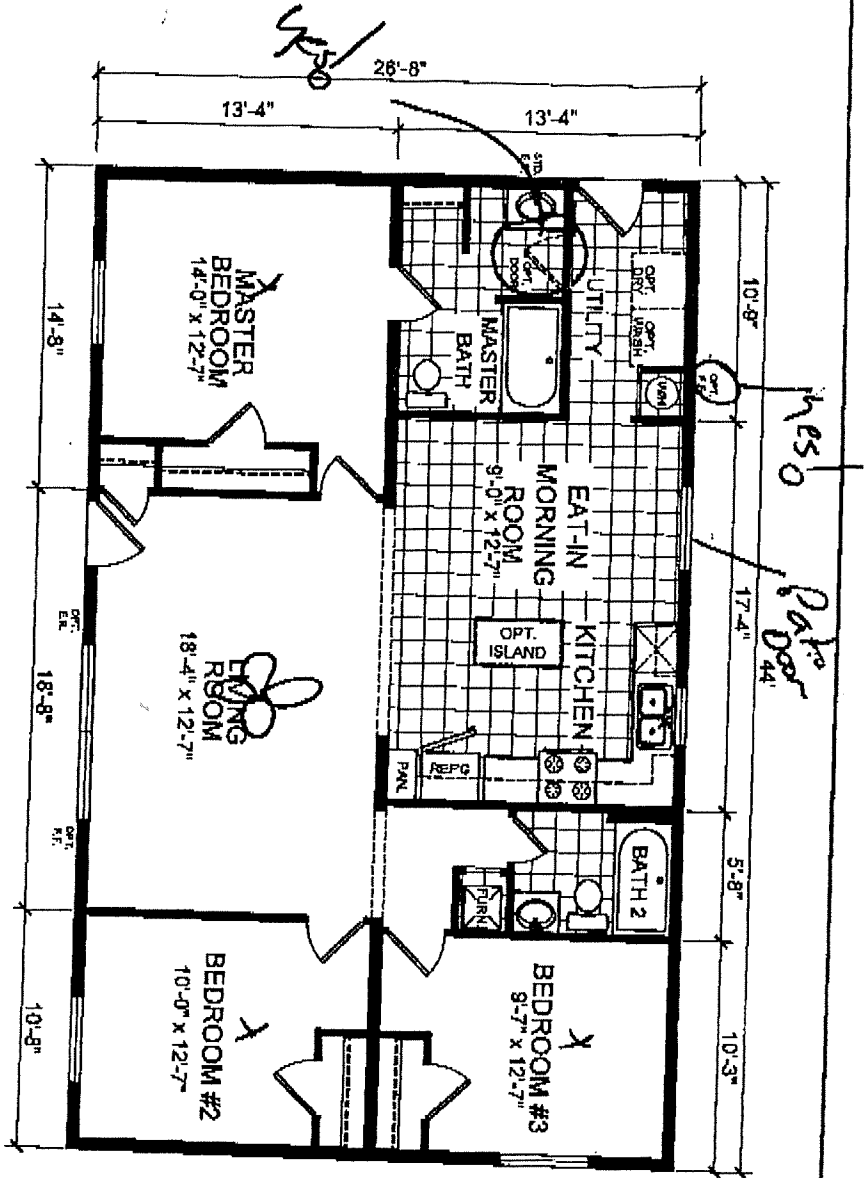


REDMAN HOMES
MIDWEST REGION



DAPPA SEAL

MODIFICATIONS

1 REV. ENTRY CLOSET & HALL LINE	BC	03-17-05
2 ADDED F.F. & E.R. NOTES	BC	04-18-06
3 REV. FOR 2007 PRODUCT	BC	06-28-06
4 ADDED LINO LINES	BC	01-08-07

PROPRIETARY AND CONFIDENTIAL
THIS DRAWING AND SPECIFICATIONS ARE HEREBY
PROTECTED AS CONFIDENTIAL MATERIALS OF REDMAN
CORPORATION & ITS AFFILIATES BY COPYRIGHT.

MODEL: RM1 XT 2848 01

2848 3BR 2BATH

TITLE: LITERATURE PLAN

SHEET:

L-101

DRAWN BY: B. CAMPBELL DATE: 12-19-2006

SCALE: 1/8" = 1'-0"

REV. D

Purchaser x Wayne M. Smith 6-13-07 Date
 x Debra M. Smith 6-13-07 Date
 Seller x [Signature] 6-13-07 Date

These signatures authorize me to order this home to these specifications. Alterations must be noted on this form. This supercedes all forms or documents used for this order.