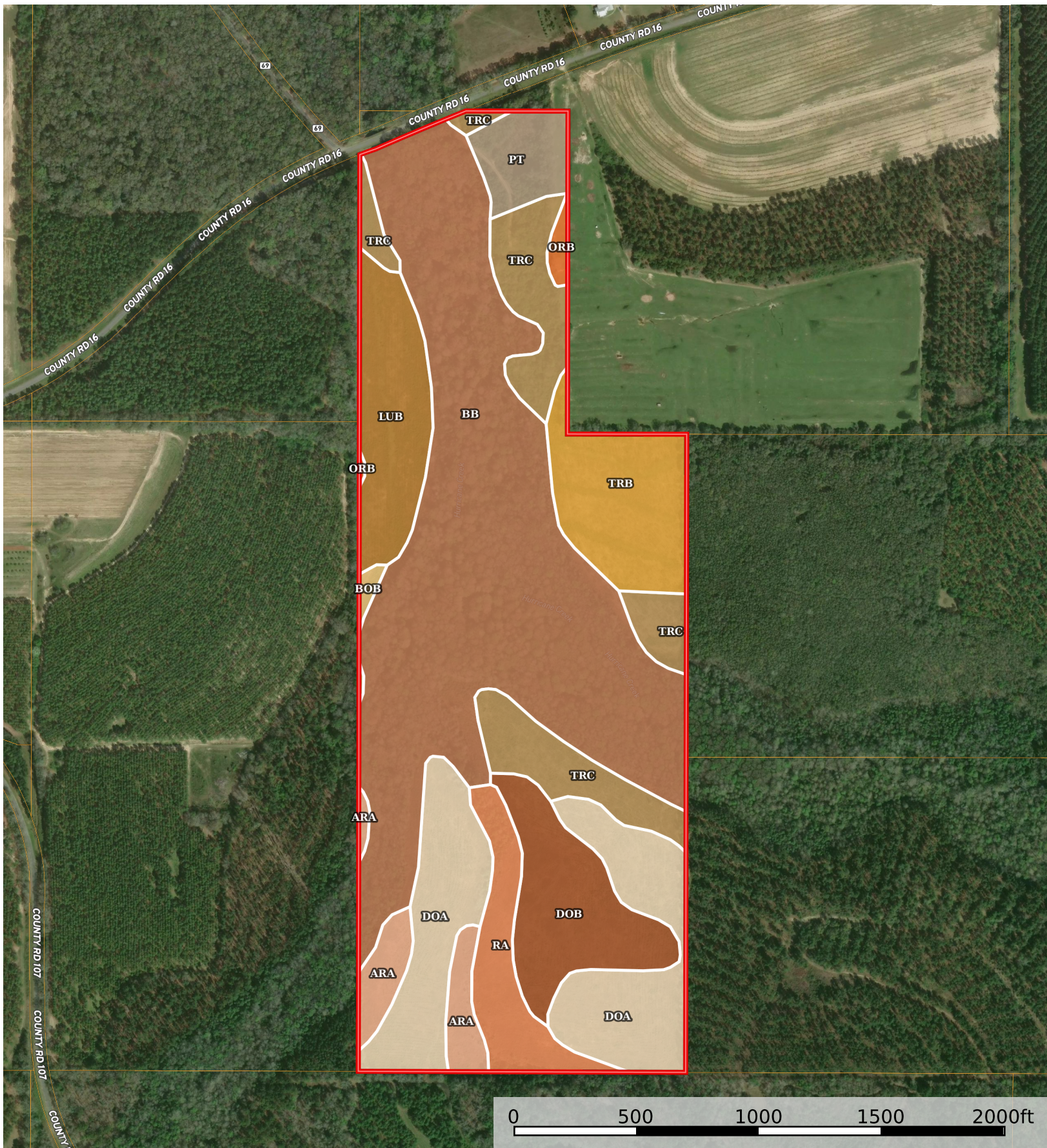


Kennedy Farms Co Rd 16

Alabama, AC +/-



 Boundary

|  Boundary 105.09 ac

SOIL CODE	SOIL DESCRIPTION	ACRES	%	CPI	NCCPI	CAP
Bb	Bibb and Osier soils, frequently flooded	43.87	41.74	0	49	5w
DoA	Dothan sandy loam, 0 to 2 percent slopes	15.33	14.59	0	53	1
TrC	Troup loamy sand, 5 to 12 percent slopes	10.89	10.36	0	49	4s
DoB	Dothan sandy loam, 2 to 5 percent slopes	7.83	7.45	0	70	2e
TrB	Troup loamy sand, 0 to 5 percent slopes	7.66	7.29	0	47	3s
LuB	Lucy loamy sand, 0 to 5 percent slopes	7.03	6.69	0	51	2s
Ra	Rains sandy loam	5.03	4.79	0	67	5w
ArA	Ardilla sandy loam, 0 to 2 percent slopes	3.48	3.31	0	54	2w
Pt	Pits	3.05	2.9	0	-	-
OrB	Orangeburg sandy loam, 2 to 5 percent slopes	0.55	0.52	0	67	2e
BoB	Bonifay loamy sand, 0 to 5 percent slopes	0.37	0.35	0	39	3s
TOTALS		105.09(*)	100%	-	50.8	3.58

(*) Total acres may differ in the second decimal compared to the sum of each acreage soil. This is due to a round error because we only show the acres of each soil with two decimal.

Capability Legend

Increased Limitations and Hazards

Decreased Adaptability and Freedom of Choice Users

Land, Capability

								
	1	2	3	4	5	6	7	8
'Wild Life'	•	•	•	•	•	•	•	•
Forestry	•	•	•	•	•	•	•	
Limited	•	•	•	•	•	•	•	
Moderate	•	•	•	•	•	•		
Intense	•	•	•	•	•			
Limited	•	•	•	•				
Moderate	•	•	•					
Intense	•	•						
Very Intense	•							

Grazing Cultivation

(c) climatic limitations (e) susceptibility to erosion

(s) soil limitations within the rooting zone (w) excess of water