

690 E. Main St, Quartzite, AZ 85346

La Paz County, Arizona, -1.909 AC +/-

690 E. MAIN ST, QUARTZITE, AZ 85346

Reader's Oasis Books

mapbox



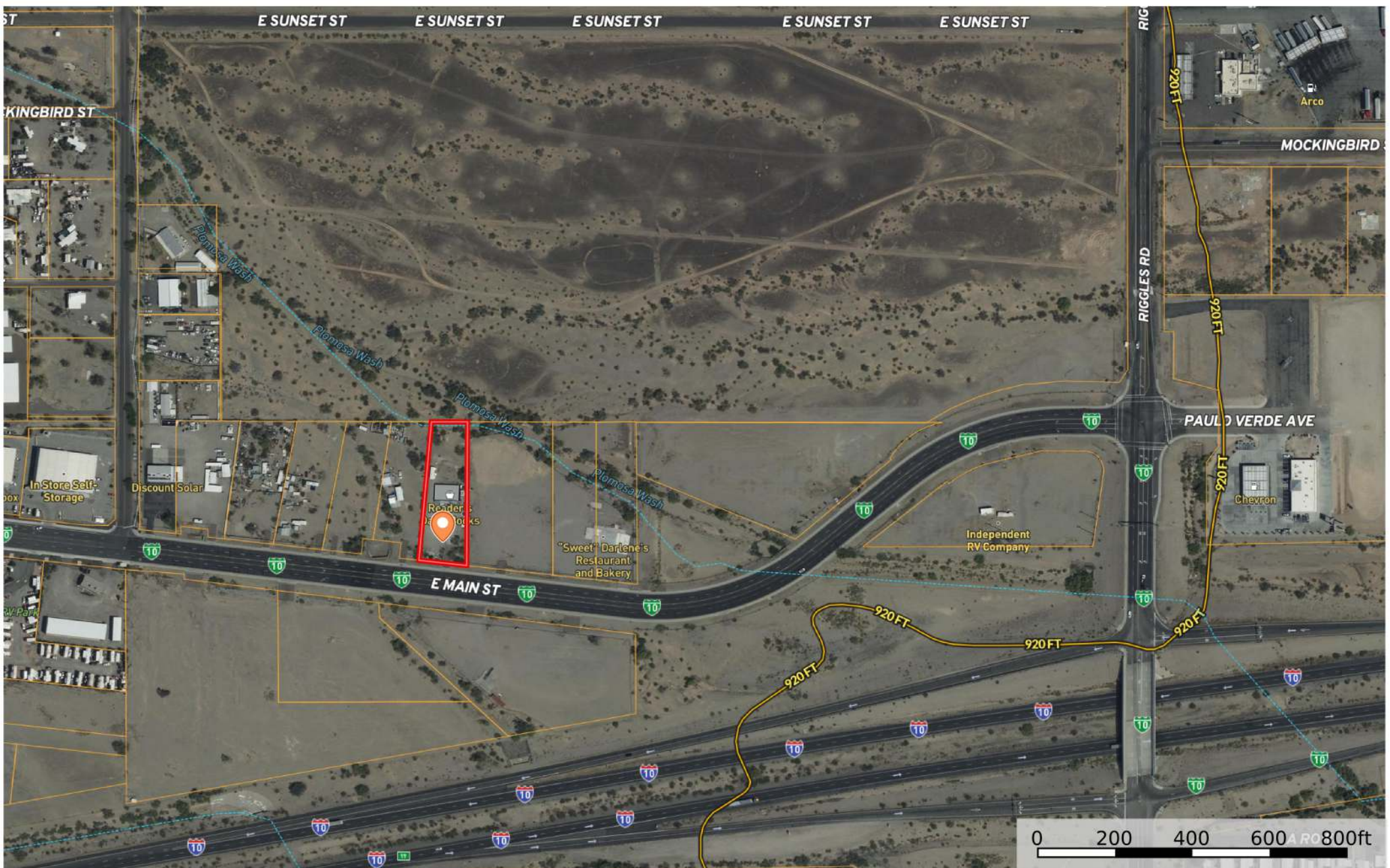
- 690 E. Main S Quartzite, AZ
- Boundary
- Stream, Intermittent
- River/Creek
- Water Body
- Voltage Unavailable
- Voltage 0 - 99 KV
- Voltage 100 - 161 KV
- Voltage 220 - 287 KV
- Voltage 345 KV
- Voltage 500 KV
- Voltage 735 KV+
- Aerodrome
- Heliport
- Seaport
- Glider Port
- Ultra Light
- Ballon Port

The information contained herein was obtained from sources deemed to be reliable. Land id® Services makes no warranties or guarantees as to the completeness or accuracy thereof.



690 E. Main St, Quartzite, AZ 85346

La Paz County, Arizona, -1.909 AC +/-



- 690 E. Main St, Quartzite
- Boundary
- Stream, Intermittent
- River/Creek
- Water Body
- Voltage Unavailable
- Voltage 0 - 9 KV
- Voltage 100 161 KV
- Voltage 220 287 KV
- Voltage 345 KV
- Voltage 500 KV
- Voltage 735 KV+
- Aerodrome
- Heliport
- Seaport
- Glider Port
- Ultra Light
- Ballon Port

C-2 Zoning



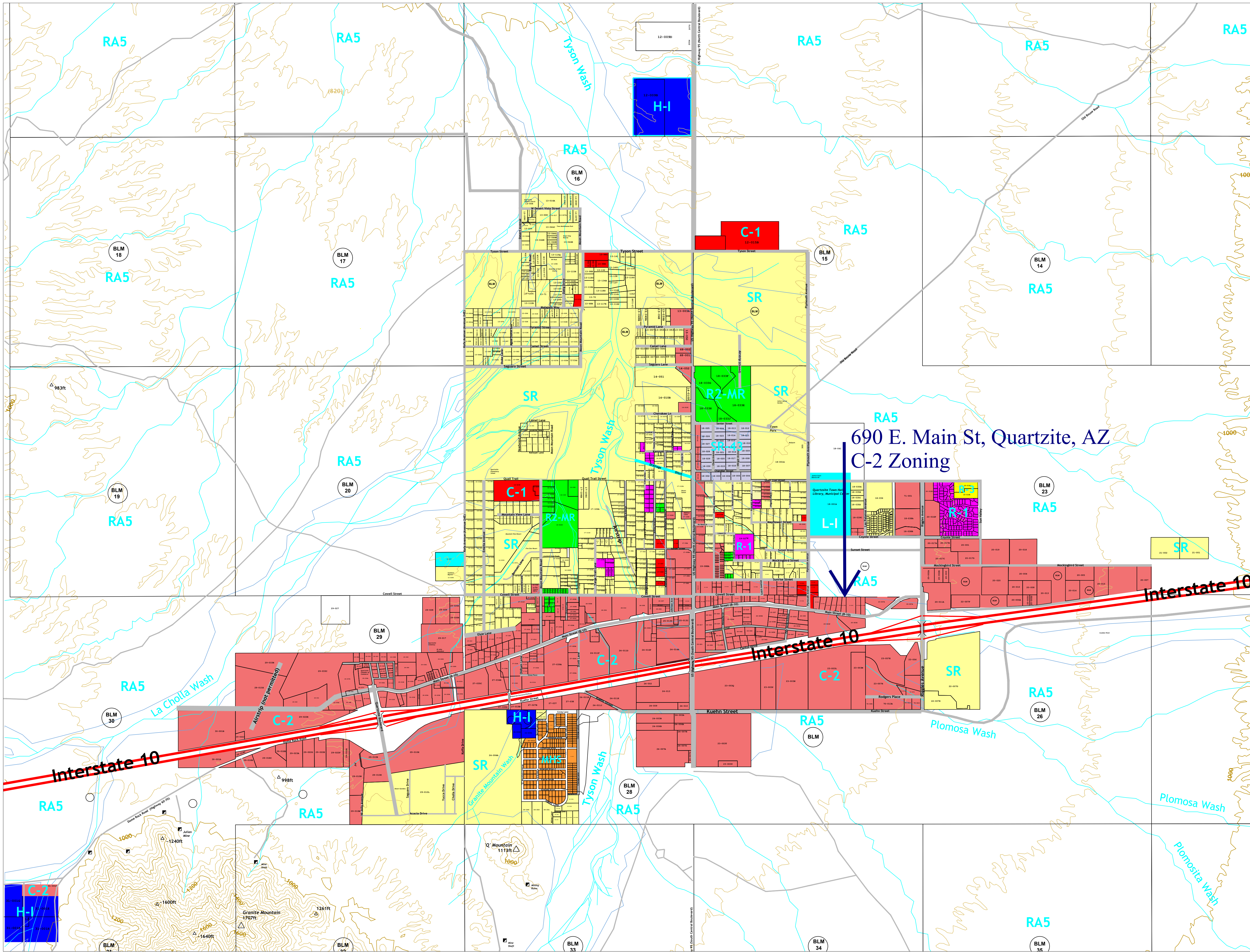


Town of Quartzsite Zoning Map

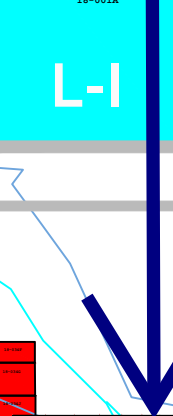
Source: County of La Paz, County Assessor and Town of Quartzsite

Updated: March 2021

RA5	Rural Area Five
SR43	Suburban Residential
MHS	Mobile Home Subdivision
SR	Suburban Ranch
R1	Low Density Residential
R2-M-R	Suburban Residential
R3	Medium Density Residential
C1	Neighborhood Commercial
C2	Commercial
LI	Light Industrial
HI	Heavy Industrial



690 E. Main St, Quartzsite, AZ
C-2 Zoning



Interstate 10

Interstate 10

