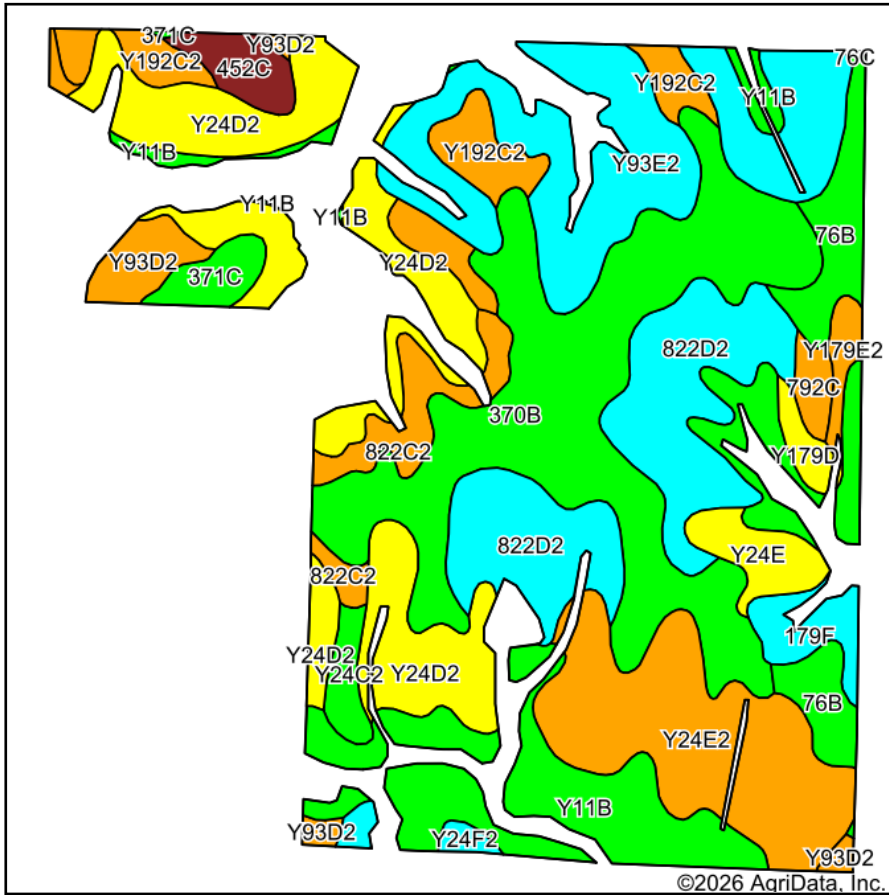
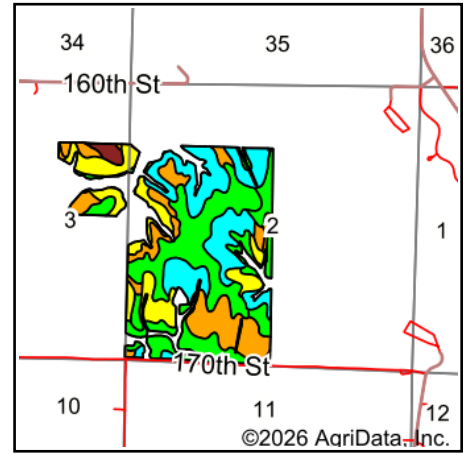


Soils Map



Soils data provided by USDA and NRCS.



State: **Iowa**
 County: **Union**
 Location: **2-72N-30W**
 Township: **Highland**
 Acres: **225.95**
 Date: **3/31/2026**



Hawkeye Real Estate

Maps Provided By:



© AgriData, Inc. 2025

www.AgriDataInc.com



Area Symbol: IA175, Soil Area Version: 28

Code	Soil Description	Acres	Percent of field	CSR2 Legend	Non-Irr Class *c	CSR2**	CSR	*n NCCPI Corn	*n NCCPI Soybeans
370B	Sharpsburg silty clay loam, 2 to 5 percent slopes	43.58	19.3%		Ile	91	87	92	79
Y24D2	Shelby clay loam, dissected till plain, 9 to 14 percent slopes, eroded	29.94	13.3%		IIle	49		75	55
Y93E2	Shelby-Adair clay loams, dissected till plain, 14 to 18 percent slopes, eroded	27.78	12.3%		IVe	28		61	43
Y11B	Colo, occasionally flooded-Ely silty clay loams, dissected till plain, 2 to 5 percent slopes	26.29	11.6%		IIw	80		86	81
822D2	Lamoni silty clay loam, 9 to 14 percent slopes, eroded	24.47	10.8%		IVe	10	15	59	42
Y24E2	Shelby clay loam, dissected till plain, 14 to 18 percent slopes, eroded	22.30	9.9%		IVe	35		69	49
Y192C2	Adair clay loam, dissected till plain, 5 to 9 percent slopes, eroded	10.17	4.5%		IIle	33		63	46
76B	Ladoga silt loam, 2 to 5 percent slopes	8.73	3.9%		Ile	86	82	83	77
822C2	Lamoni silty clay loam, 5 to 9 percent slopes, eroded	6.04	2.7%		IIle	32	30	61	45
Y93D2	Shelby-Adair clay loams, dissected till plain, 9 to 14 percent slopes, eroded	4.86	2.2%		IIle	35		68	50
Y24E	Shelby loam, dissected till plain, 14 to 18 percent slopes	3.88	1.7%		IVe	41		75	56
179F	Gara loam, 18 to 25 percent slopes	3.43	1.5%		VIe	18	15	61	42
452C	Lineville silt loam, 5 to 9 percent slopes	3.19	1.4%		IIle	57	36	89	74
371C	Nira-Sharpsburg silty clay loams, 5 to 9 percent slopes	2.79	1.2%		IIle	88	69	92	79

Soils data provided by USDA and NRCS.



Code	Soil Description	Acres	Percent of field	CSR2 Legend	Non-Irr Class *c	CSR2**	CSR	*n NCCPI Corn	*n NCCPI Soybeans	
Y24C2	Shelby clay loam, dissected till plain, 5 to 9 percent slopes, eroded	2.18	1.0%		IIIe	73		77	58	
Y179E2	Gara loam, dissected till plain, 14 to 18 percent slopes, eroded	1.62	0.7%		VIe	32		70	49	
792C	Armstrong loam, 5 to 9 percent slopes	1.62	0.7%		IIIe	37	31	75	57	
Y179D	Gara loam, dissected till plain, 9 to 14 percent slopes	1.59	0.7%		IVe	49		84	64	
Y24F2	Shelby clay loam, dissected till plain, 18 to 25 percent slopes, eroded	1.40	0.6%		VIe	20		54	36	
76C	Ladoga silt loam, dissected till plain, 5 to 9 percent slopes	0.09	0.0%		IIIe	80	67	81	74	
Weighted Average						3.09	52.3	*-	*n 74.9	*n 59.6

**IA has updated the CSR values for each county to CSR2.

*- CSR weighted average cannot be calculated on the current soils data, use prior data version for csr values.

*n: The aggregation method is "Weighted Average using all components"

*c: Using Capabilities Class Dominant Condition Aggregation Method