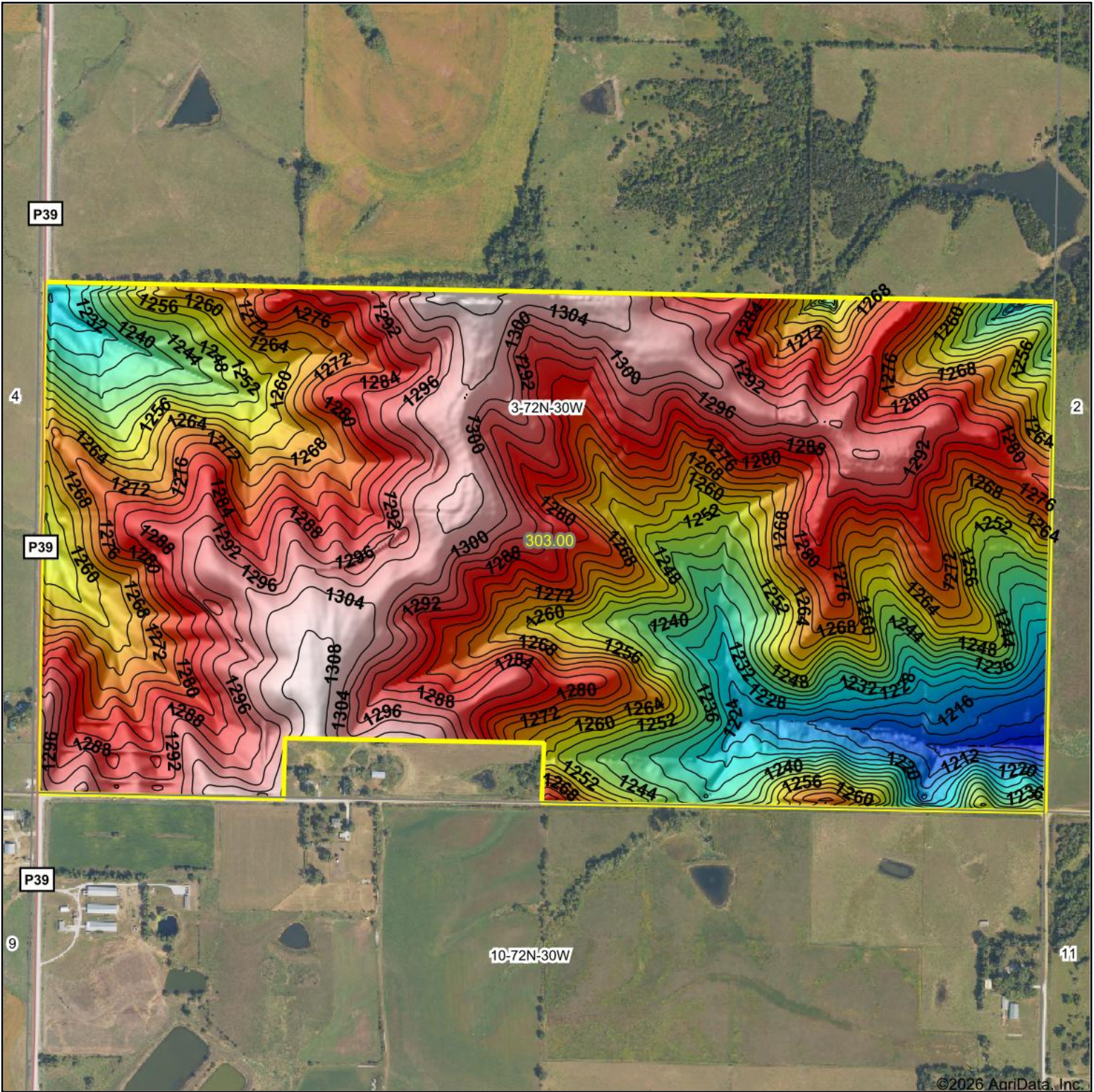


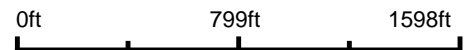
Topography Hillshade



©2026 AgriData, Inc.



Source: USGS 3 meter dem



Interval(ft): 4

Min: 1,202.3

Max: 1,310.4

Range: 108.1

Average: 1,270.4

Standard Deviation: 24.41 ft



3-72N-30W
Union County
Iowa

Boundary Center: 41° 3' 38.72, -94° 17' 22.66

