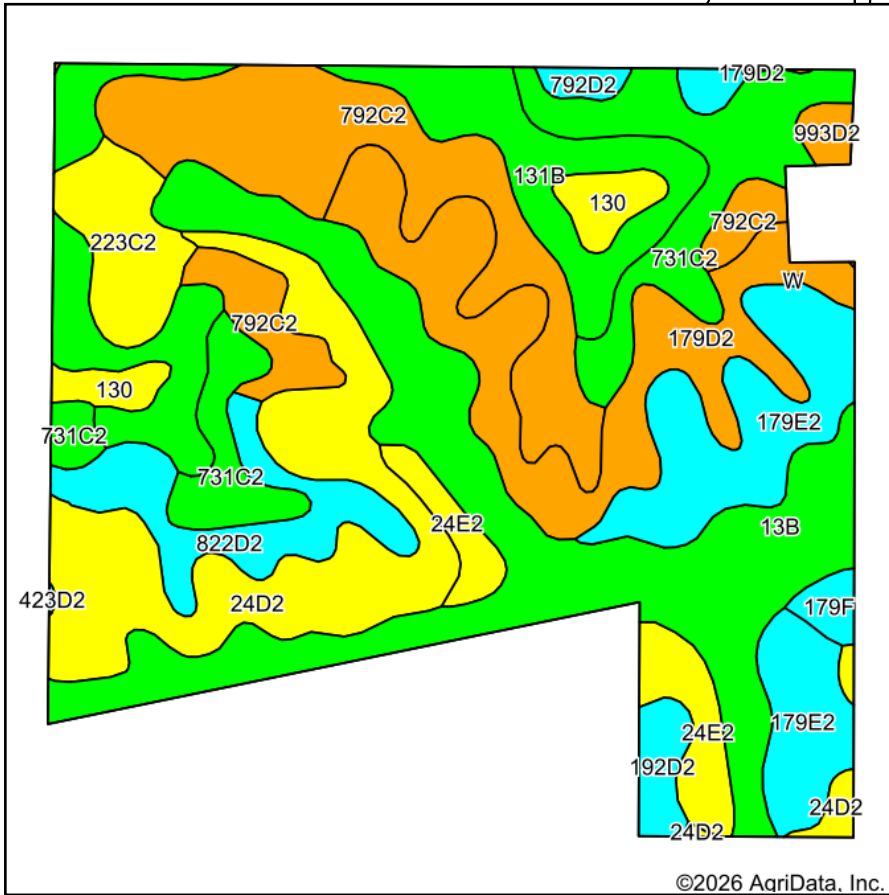
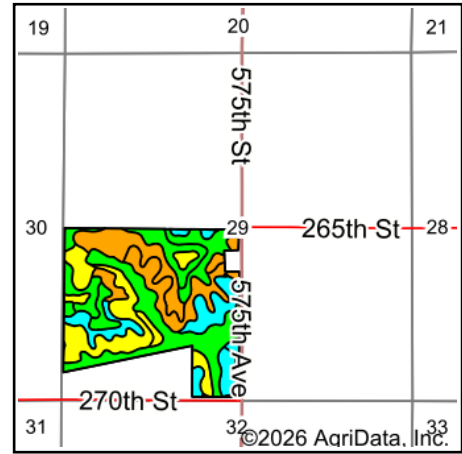


# Soils Map

Boundary Lines Are Approximate



Soils data provided by USDA and NRCS.



State: **Iowa**  
 County: **Monroe**  
 Location: **29-71N-18W**  
 Township: **Franklin**  
 Acres: **128**  
 Date: **4/6/2026**



**Hawkeye Real Estate**

Maps Provided By:



© AgriData, Inc. 2025

www.AgriDataInc.com



Area Symbol: IA135, Soil Area Version: 33

Code	Soil Description	Acres	Percent of field	CSR2 Legend	Non-Irr Class *c	CSR2**	CSR	*n NCCPI Corn	*n NCCPI Soybeans
13B	Olmitz-Colo-Vesser complex, 2 to 5 percent slopes	23.84	18.5%		IIw	82	60	70	71
792C2	Armstrong loam, 5 to 9 percent slopes, moderately eroded	17.25	13.5%		IIIe	31	27	65	47
24D2	Shelby clay loam, 9 to 14 percent slopes, moderately eroded	15.78	12.3%		IIIe	48	48	70	53
179D2	Gara loam, 9 to 14 percent slopes, moderately eroded	13.35	10.4%		IVe	36	43	64	47
131B	Pershing silt loam, 2 to 5 percent slopes	12.95	10.1%		IIIe	70	67	74	59
179E2	Gara loam, 14 to 18 percent slopes, moderately eroded	11.96	9.3%		VIe	26	33	62	45
731C2	Pershing silty clay loam, 5 to 9 percent slopes, moderately eroded	11.65	9.1%		IIIe	62	45	68	56
822D2	Lamoni clay loam, 9 to 14 percent slopes, moderately eroded	5.85	4.6%		IVe	11	15	63	44
223C2	Rinda silty clay loam, 5 to 9 percent slopes, moderately eroded	4.33	3.4%		IVw	45	22	60	46
24E2	Shelby clay loam, 14 to 18 percent slopes, moderately eroded	4.17	3.3%		IVe	40	38	66	49
130	Belinda silt loam, 0 to 2 percent slopes	2.51	2.0%		IIIw	47	63	75	63
192D2	Adair clay loam, heavy till, 9 to 14 percent slopes, moderately eroded	1.54	1.2%		IVe	9	15	65	44
792D2	Armstrong loam, 9 to 14 percent slopes, moderately eroded	1.23	1.0%		IVe	9	13	62	43
179F	Gara loam, 18 to 25 percent slopes	0.84	0.7%		VIe	19	15	55	41

Soils data provided by USDA and NRCS.



Code	Soil Description	Acres	Percent of field	CSR2 Legend	Non-Irr Class *c	CSR2**	CSR	*n NCCPI Corn	*n NCCPI Soybeans	
993D2	Gara-Armstrong loams, 9 to 14 percent slopes, moderately eroded	0.75	0.6%		IVe	35	20	66	48	
<b>Weighted Average</b>						<b>3.36</b>	<b>49.1</b>	<b>43.6</b>	<b>*n 67.2</b>	<b>*n 54.2</b>

\*\*IA has updated the CSR values for each county to CSR2.

\*n: The aggregation method is "Weighted Average using all components"

\*c: Using Capabilities Class Dominant Condition Aggregation Method