

Soil Map



Soil Code	Soil Description	Acres	Drainage Class	CPI	WT Depth
485	Lawler loam	1.3	Somewhat poorly drained	77	18.1
1846	Kato silty clay loam, depressional	0.0	Very poorly drained	57	N/A
Total Acres				1.3	
CPI Weighted Average				76.8	

Data Source: NRCS Soil Survey

Minnesota / Olmsted County
 43.9690, -92.5560
 Rochester / 19
 106N / 14W
 1.32 acres



Generated: 3/26/2026

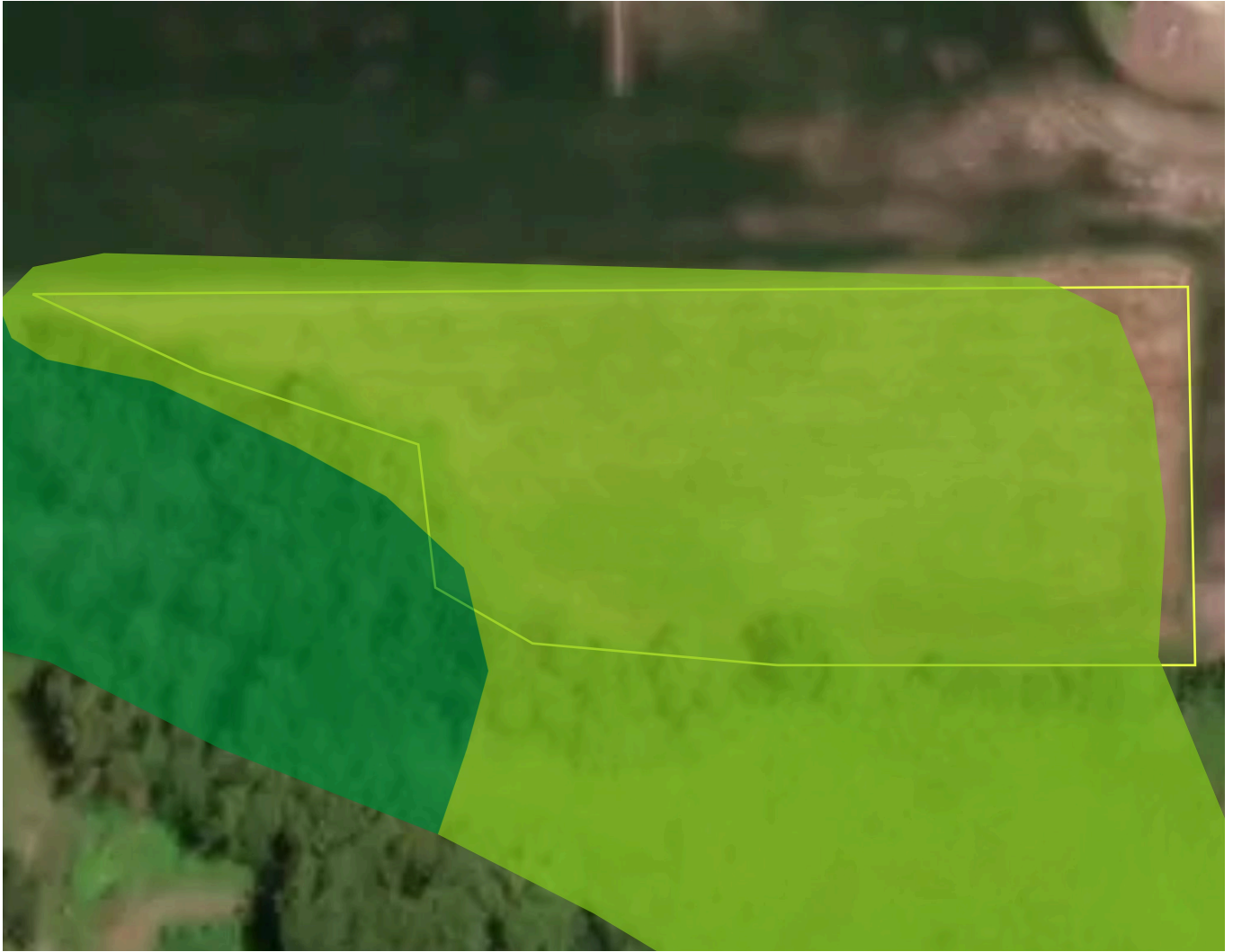
Drainage Classification



Key	Drainage Class	Acres(%)
	Somewhat poorly drained	99.00%
	Very poorly drained	1.00%

Data Source: NRCS Soil Survey

Wetland



Key	Classification Code	Type	Acres
	PEM1B	Freshwater Emergent Wetland	1.24
	PFO1B	Freshwater Forested/Shrub Wetland	0.01
Total			1.25

Data Source: US Fish & Wildlife Service - National Wetland Inventory

Wetland data shown is for planning purposes only; please contact your local USDA NRCS office for an official wetland determination.

Minnesota / Olmsted County
43.9690, -92.5560
Rochester / 19
106N / 14W
1.32 acres



Generated: 3/26/2026



Data Source: 2008 FSA version of CLU boundaries

[Driving Directions](#)

43.9690, -92.5560



Minnesota / Olmsted County
43.9690, -92.5560
Rochester / 19
106N / 14W
1.32 acres



Generated: 3/26/2026