

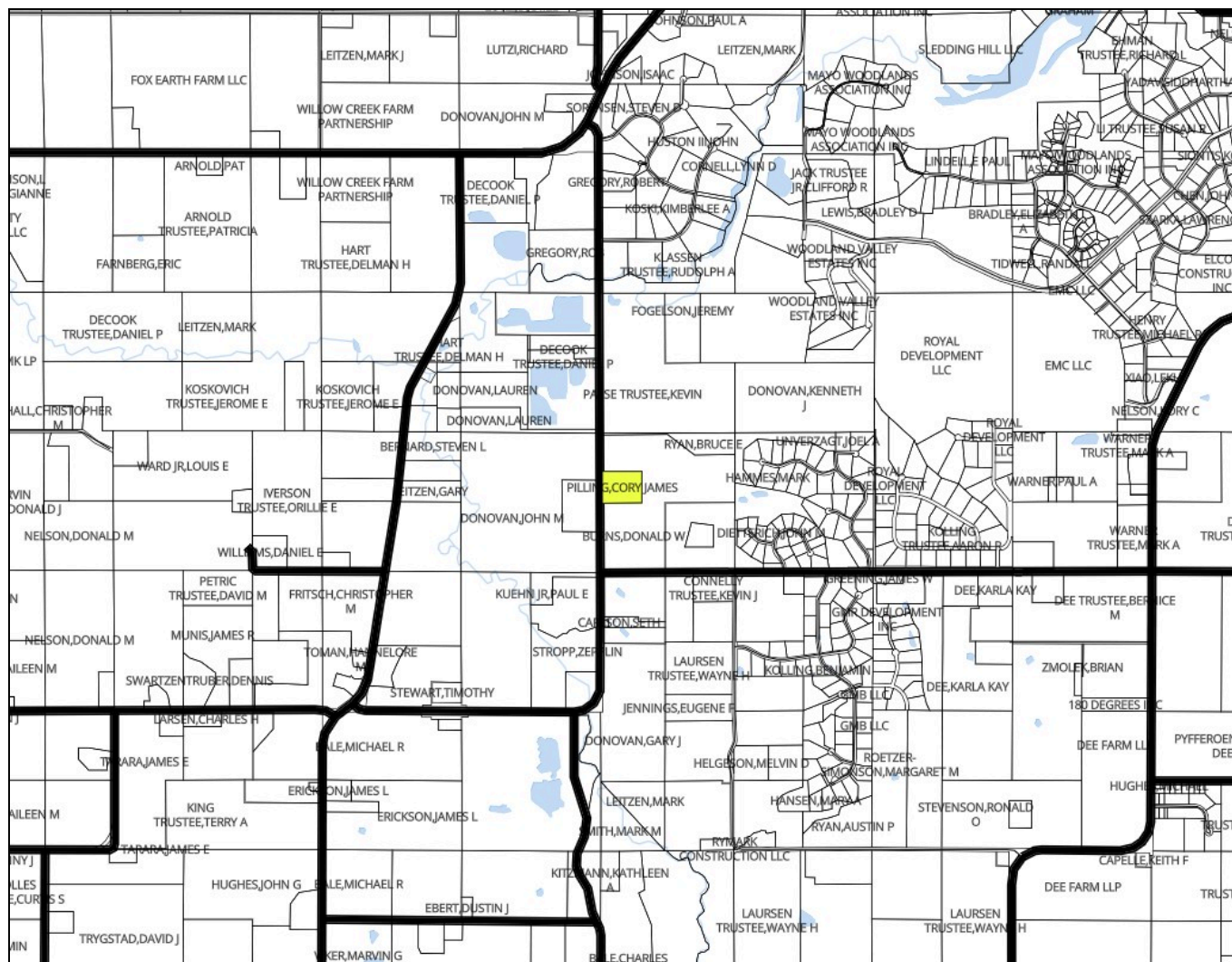
# Plat Map



106N

Rochester

14W

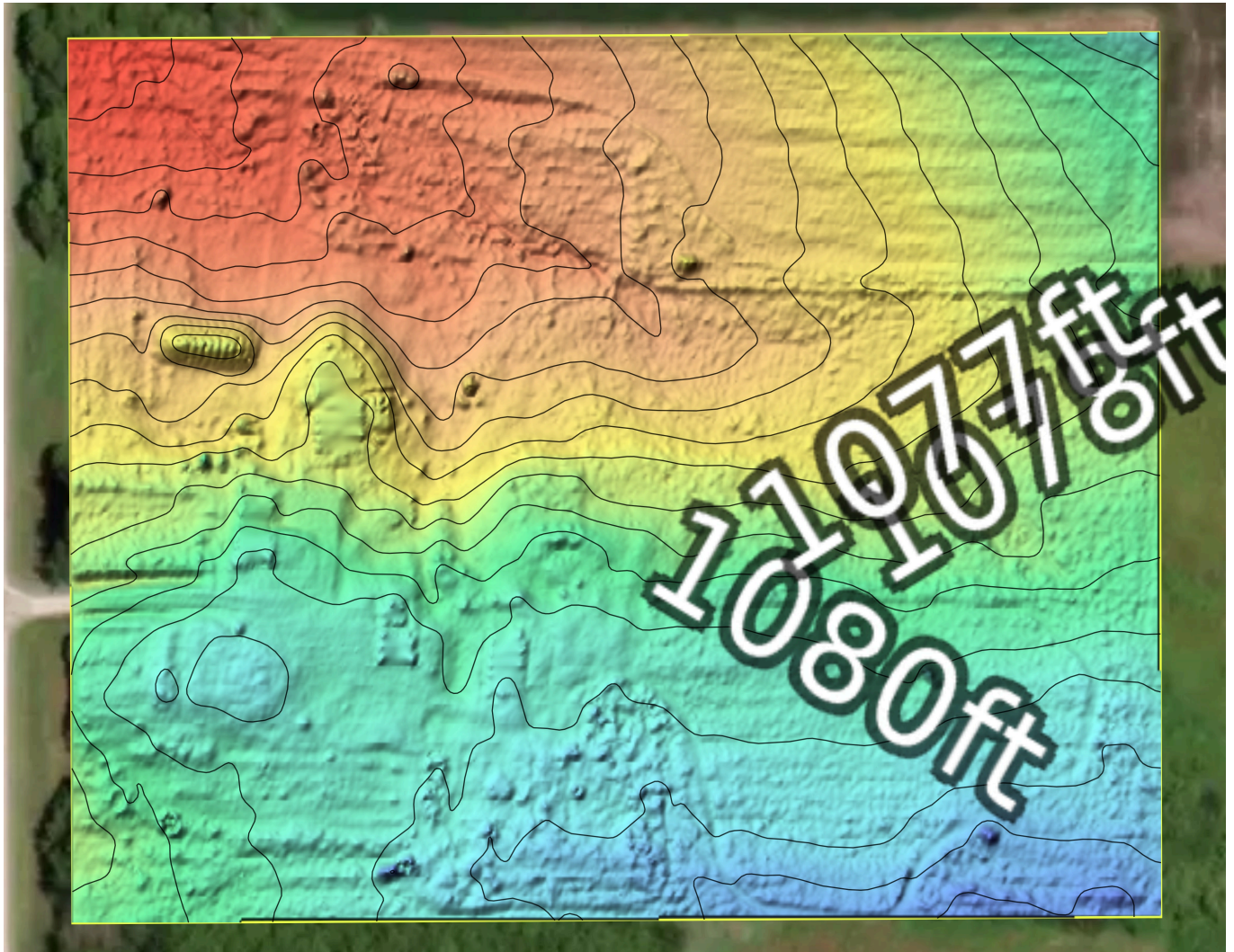


Minnesota / Olmsted County  
43.9684, -92.5564  
Rochester / 19  
106N / 14W  
10.05 acres

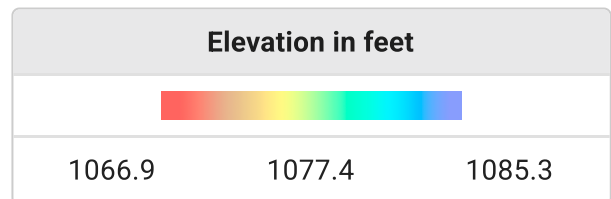


Generated: 3/26/2026

# Topography



Minimum Elevation	1066.9 feet
Maximum Elevation	1085.3 feet
Mean Elevation	1077.4 feet
Standard Deviation	4.1 feet
Elevation Range	18.3 feet
Contour Interval	20 feet



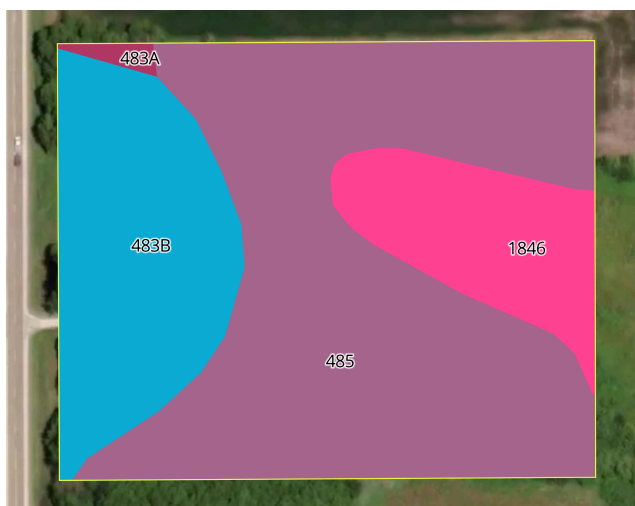
Data Source: AWS Open Data Registry - USGS 3DEP

Minnesota / Olmsted County  
43.9684, -92.5564  
Rochester / 19  
106N / 14W  
10.05 acres



Generated: 3/26/2026

# Soil Map



Soil Code	Soil Description	Acres	Drainage Class	CPI	WT Depth
485	Lawler loam	6.1	Somewhat poorly drained	77	18.1
483B	Waukee loam, 2 to 5 percent slopes	2.5	Well drained	66	N/A
1846	Kato silty clay loam, depressional	1.4	Very poorly drained	57	N/A
483A	Waukee loam, 0 to 2 percent slopes	0.1	Well drained	69	N/A
131B	Massbach silt loam, 2 to 6 percent slopes	0.0	Moderately well drained	84	24.0
<b>Total Acres</b>				<b>10.1</b>	
<b>CPI Weighted Average</b>				<b>71.4</b>	

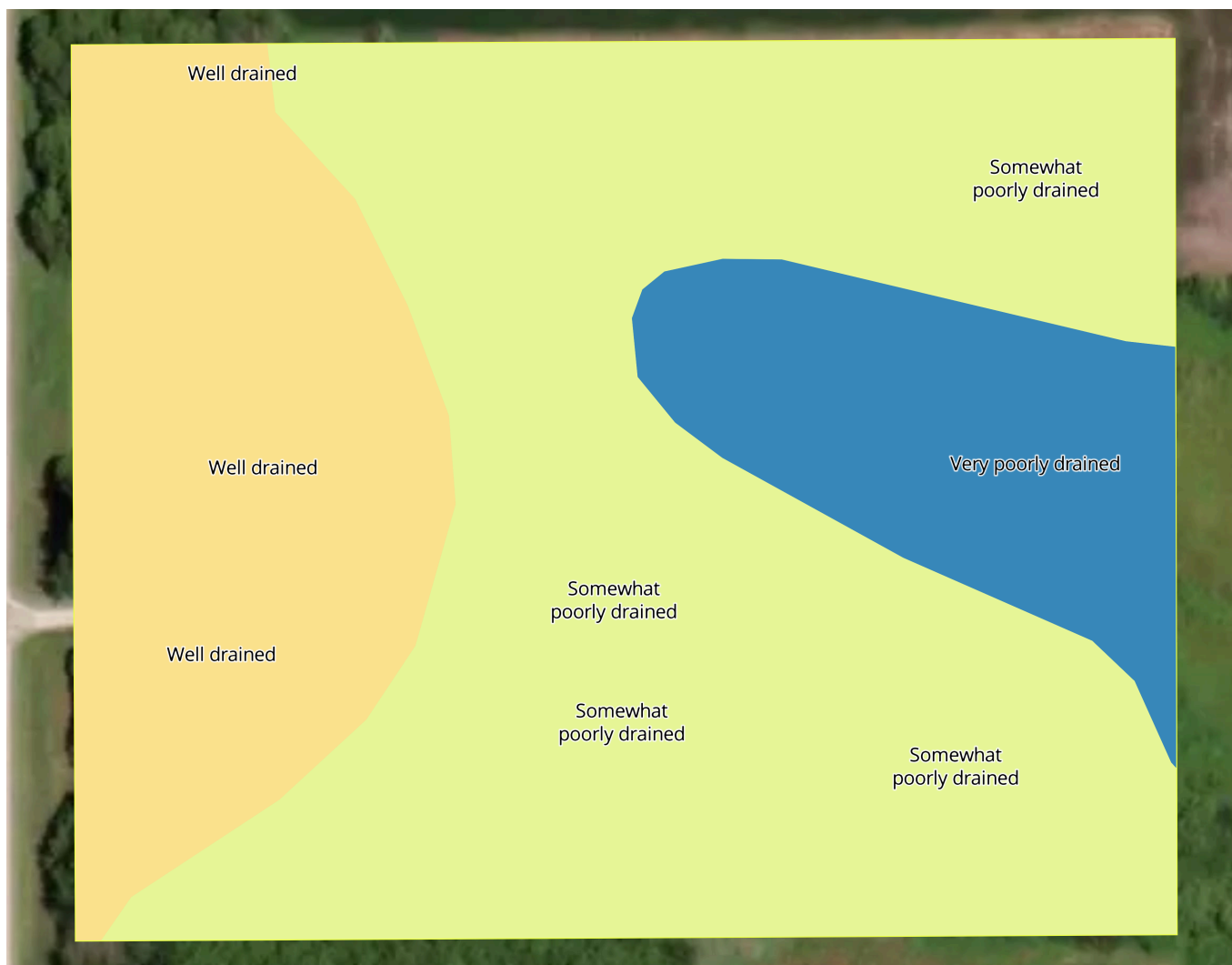
Data Source: NRCS Soil Survey

Minnesota / Olmsted County  
 43.9684, -92.5564  
 Rochester / 19  
 106N / 14W  
 10.05 acres



Generated: 3/26/2026

# Drainage Classification



Key	Drainage Class	Acres(%)
	Somewhat poorly drained	61.00%
	Well drained	25.00%
	Very poorly drained	14.00%
	Moderately well drained	0.00%

Data Source: NRCS Soil Survey

# Wetland



Key	Classification Code	Type	Acres
	PEM1B	Freshwater Emergent Wetland	2.65
	PFO1B	Freshwater Forested/Shrub Wetland	1.22
<b>Total</b>			<b>3.87</b>

Data Source: US Fish & Wildlife Service - National Wetland Inventory

Wetland data shown is for planning purposes only; please contact your local USDA NRCS office for an official wetland determination.



Data Source: 2008 FSA version of CLU boundaries

## [Driving Directions](#)

43.9684, -92.5564



Minnesota / Olmsted County  
43.9684, -92.5564  
Rochester / 19  
106N / 14W  
10.05 acres



Generated: 3/26/2026