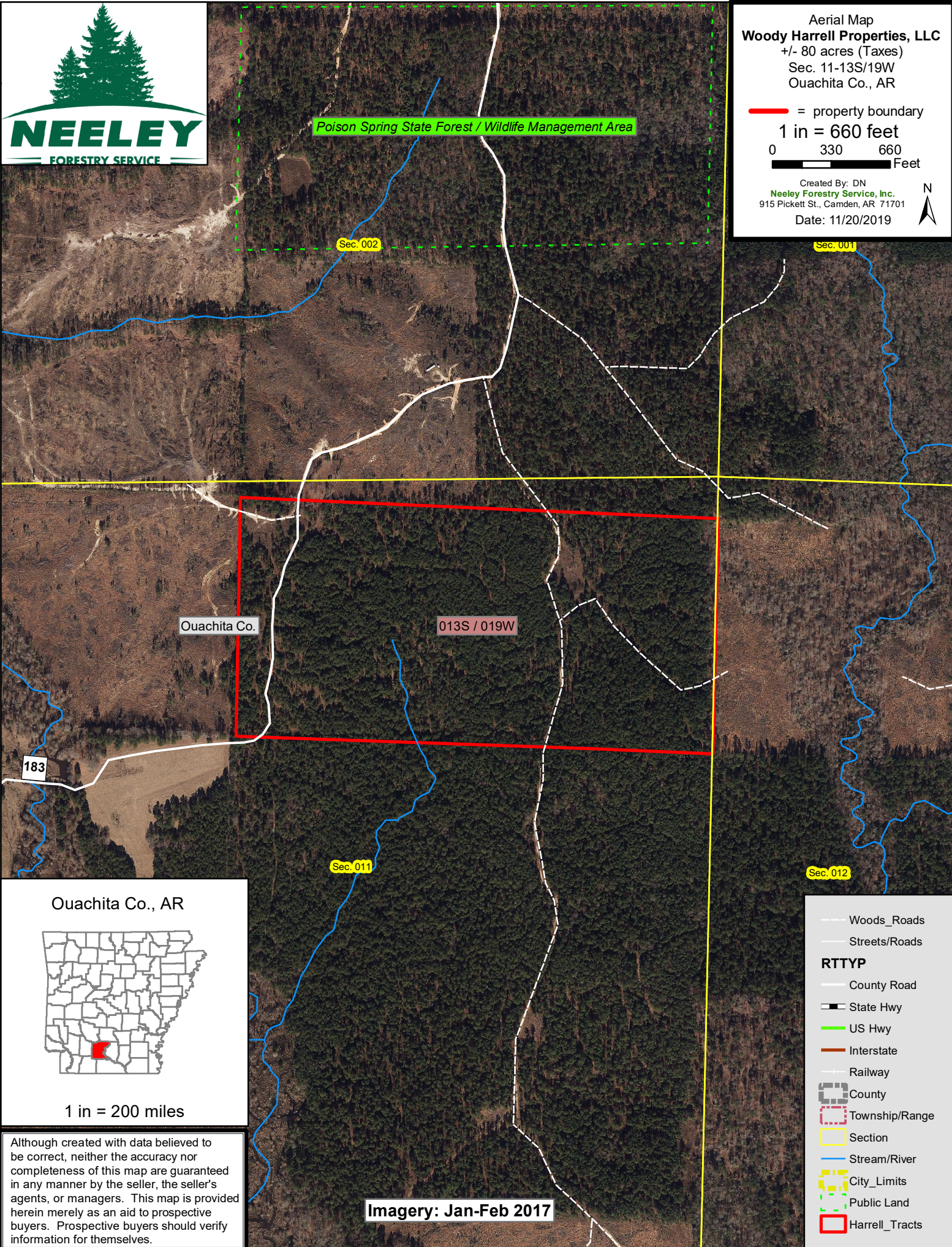




Aerial Map  
**Woody Harrell Properties, LLC**  
 +/- 80 acres (Taxes)  
 Sec. 11-13S/19W  
 Ouachita Co., AR

— = property boundary  
 1 in = 660 feet  
 0 330 660 Feet

Created By: DN  
 Neeley Forestry Service, Inc.  
 915 Pickett St., Camden, AR 71701  
 Date: 11/20/2019



Although created with data believed to be correct, neither the accuracy nor completeness of this map are guaranteed in any manner by the seller, the seller's agents, or managers. This map is provided herein merely as an aid to prospective buyers. Prospective buyers should verify information for themselves.

Imagery: Jan-Feb 2017

- Woods\_Roads
- Streets/Roads
- RTTYP**
- County Road
- ▬ State Hwy
- US Hwy
- Interstate
- Railway
- ▭ County
- ▭ Township/Range
- ▭ Section
- Stream/River
- ▭ City\_Limits
- ▭ Public Land
- ▭ Harrell\_Tracts