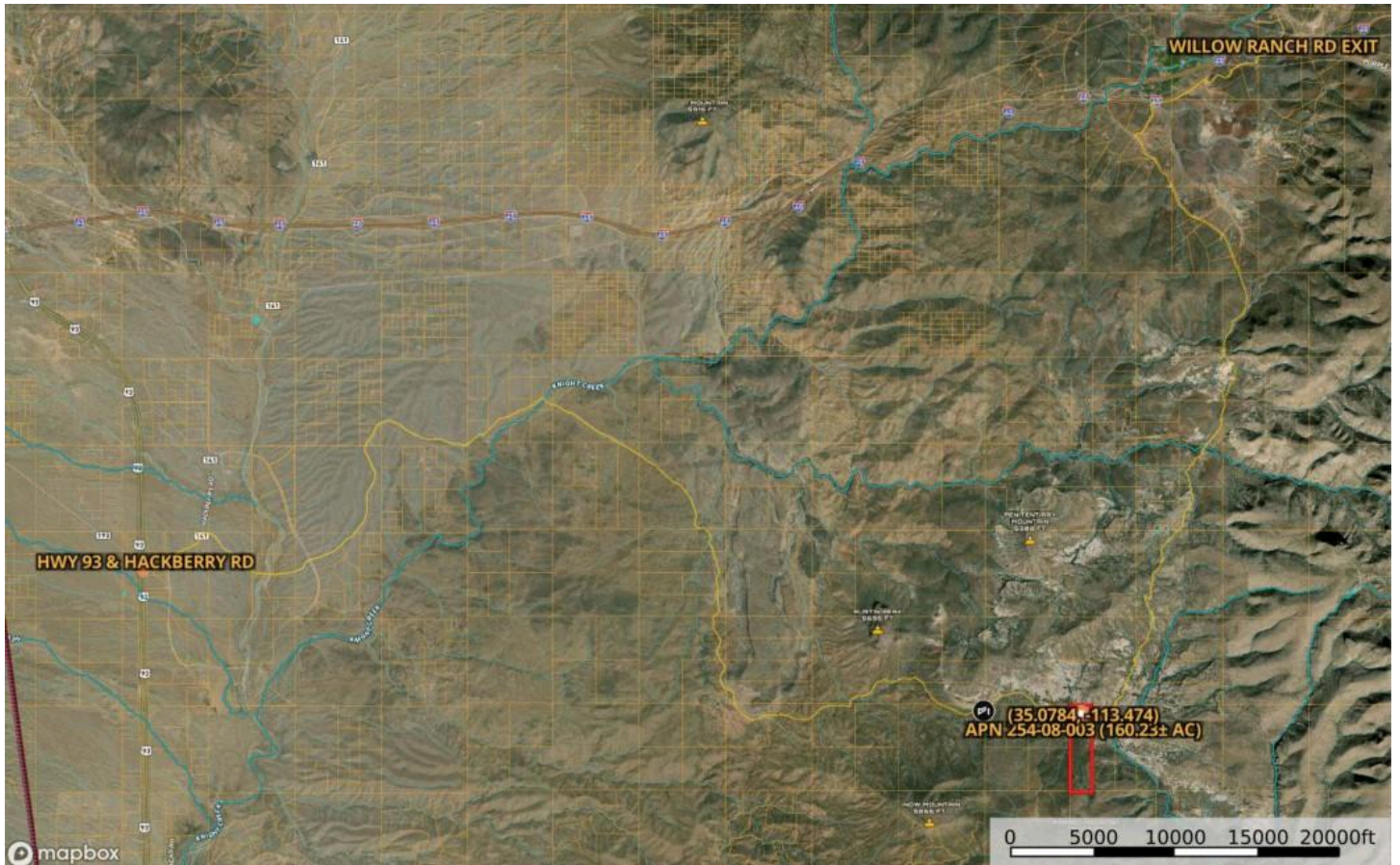


DIRECTIONS FROM HIGHWAY 93 TO 160 ACRES (APN 254-08-003, MOHAVE COUNTY)

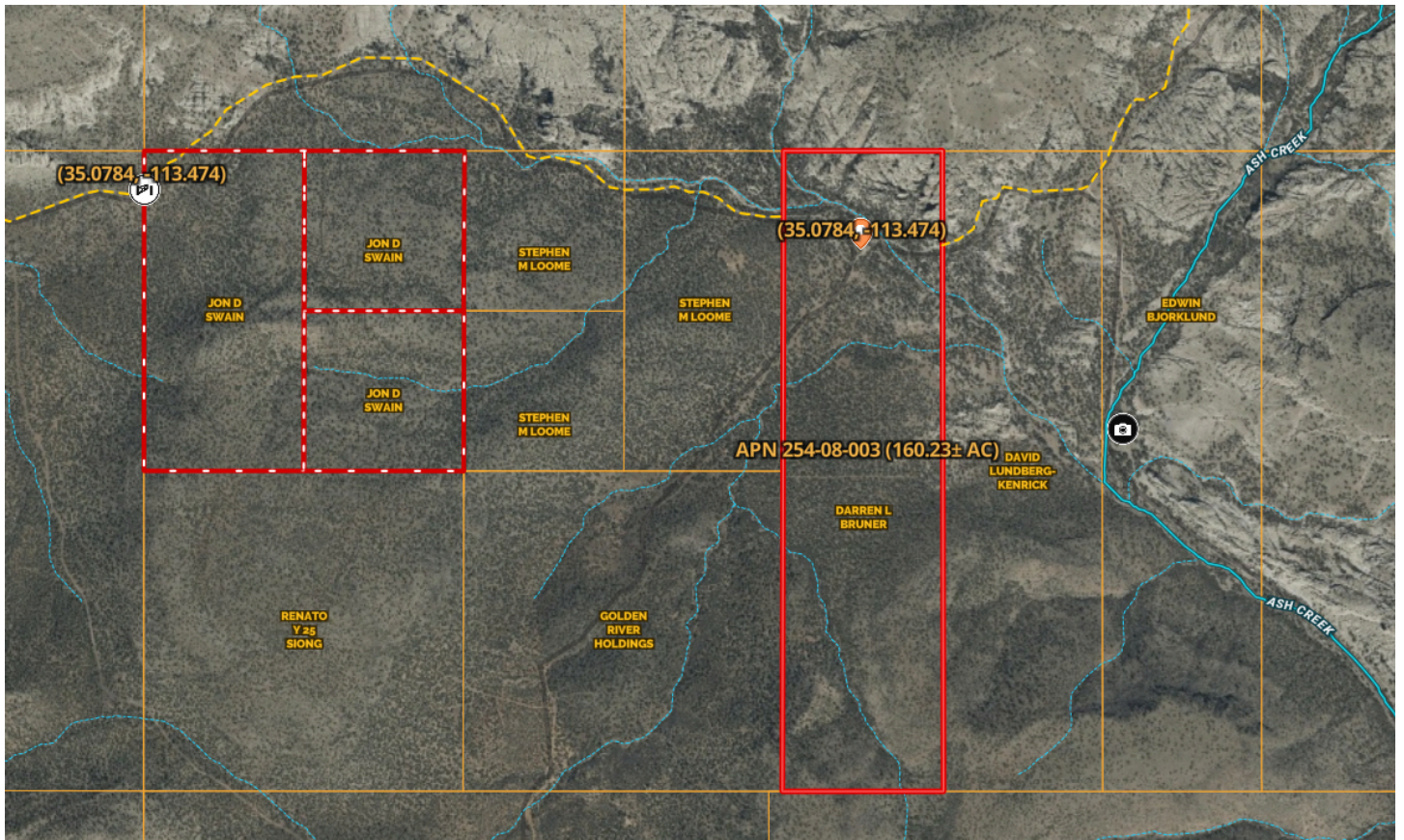


Cross Streets: I-40 and Highway 93 (east of Kingman, AZ)

Directions: South on Highway 93 for 4.8 miles. East on Hackberry Rd for 0.7 miles. Right (east) on Knight Creek Rd for about 13.6 miles to the gate to the property.

Once on Knight Creek Rd, stay on it and go to the right at any fork in the road. Don't take Knight Creek Rd north when you see it. Stay straight on the main dirt road all the way to the gate, about 14.3 miles total from Highway 93.

GPS coordinates at the white gate: [35.0794, -113.4939](#). Go through the gate and follow the road east about 1.1 miles to GPS coordinates: ([35.0784, -113.474](#)) which is the center of the property. See maps for directions.



4X4 is recommended! The road getting to the gate gets more rough as you get closer to the white gate. We made it in two-wheel drive OK to the white gate. There is a spot between the gate and the west boundary of the 160-acres that is a rock road for about 100 yards and descends. You'll need 4-wheel drive to climb back out as you return back to Highway 93. The drive from Highway 93 to the white gate takes about 40 minutes and another 10 minutes to drive the additional mile to the 160-acre property (APN 254-08-003)