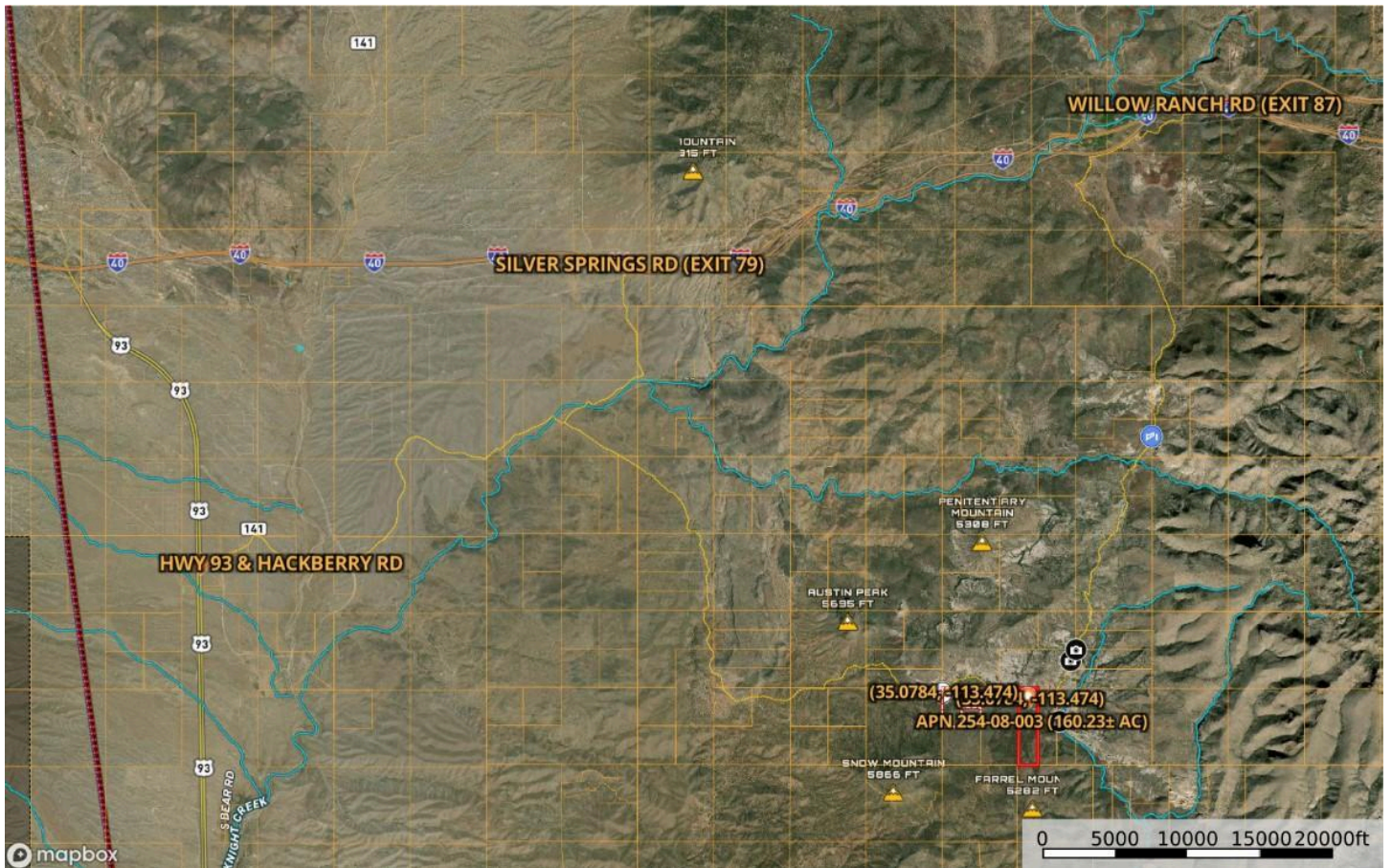


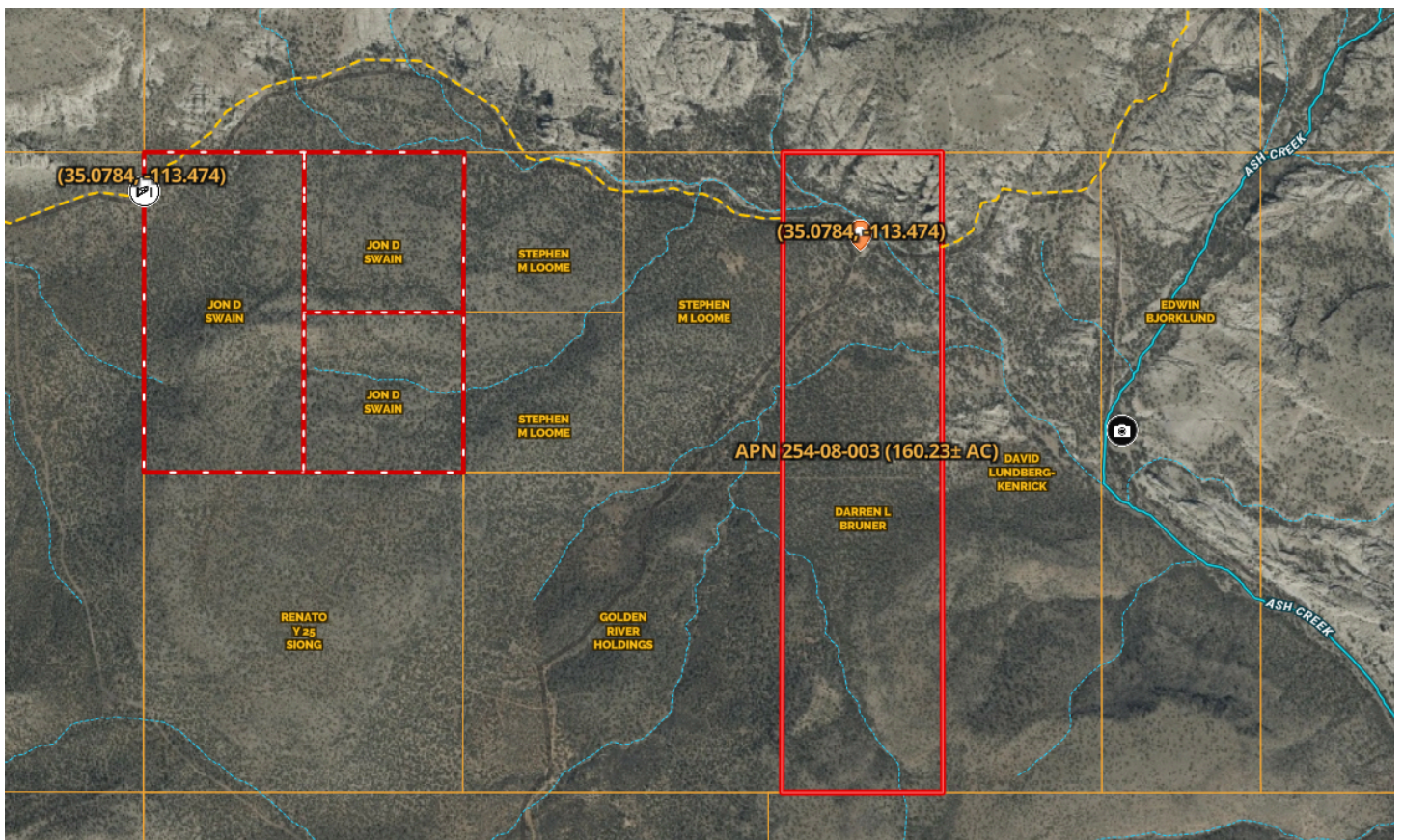
# DIRECTIONS FROM I-40 & SILVER SPRINGS RD (EXIT 79) TO 160 ACRES (APN 254-08-003, MOHAVE COUNTY)



**Cross Streets:** I-40 and Silver Springs Rd - Exit 79 (east of Kingman)

**Directions:** South on Silver Springs Rd for 2.7 miles. East on Knight Creek Rd to the white.

GPS coordinates at the white gate: [35.0794, -113.4939](#). Go through the gate and follow the road east about 1.1 miles to GPS coordinates: [\(35.0784, -113.474\)](#) which is the center of the property. See maps for directions.



4X4 is recommended! The road getting to the gate gets more rough as you get closer to the white gate. We made it in two-wheel drive OK to the white gate. There is a spot between the gate and the west boundary of the 160-acres that is a rock road for about 100 yards and descends. You'll need 4-wheel drive to climb back out as you return back to the white gate. The drive from I-40 and Silver Springs Rd to the white gate takes about 30 minutes or so and another 10 minutes to drive the additional mile to the 160-acre property (APN 254-08-003).