



Field Report

Minnesota • Olmsted County

Page / 03 • 107N / 15W

40.61 acres

Generated: 5/3/2026

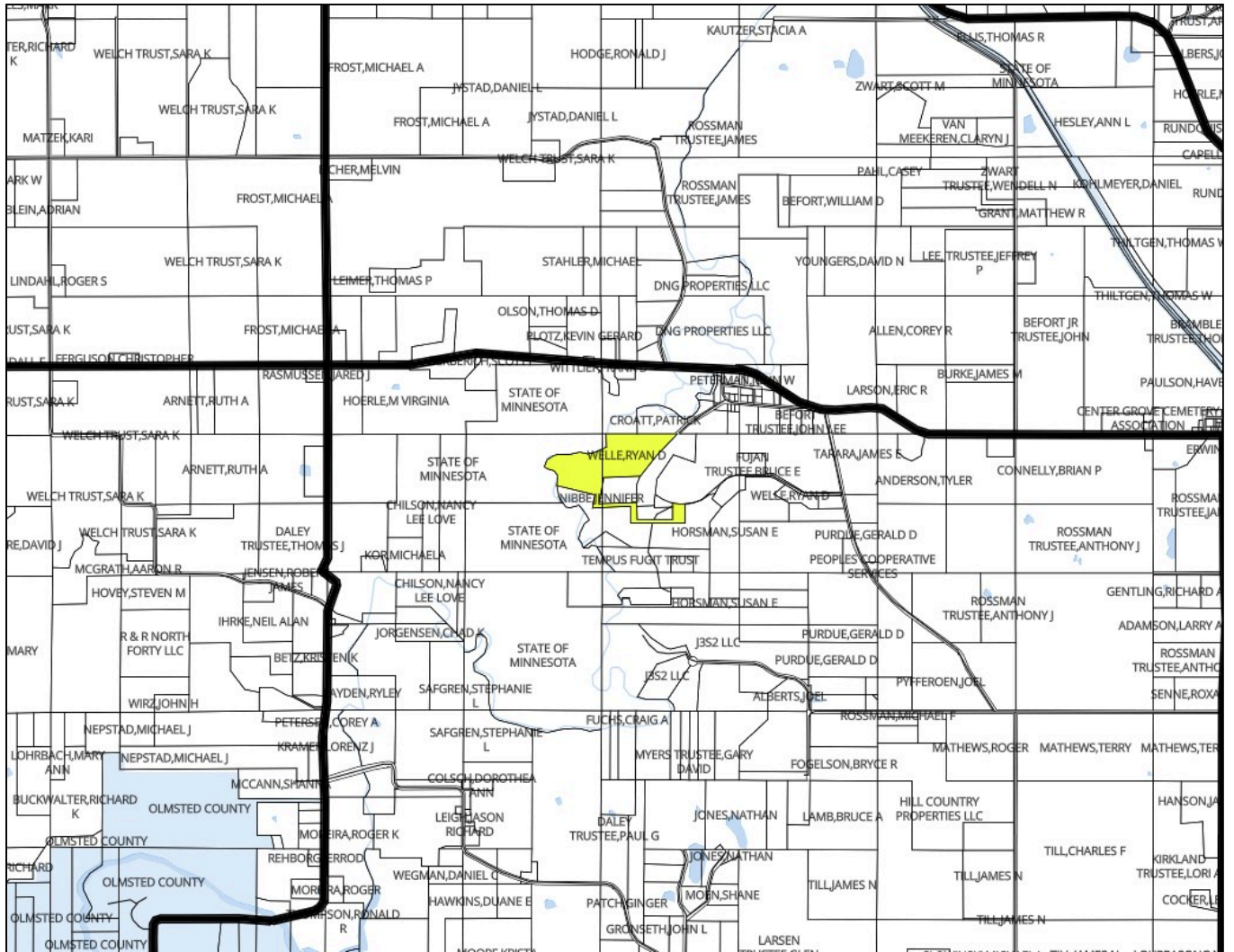
Plat Map



107N

Kalmar

15W

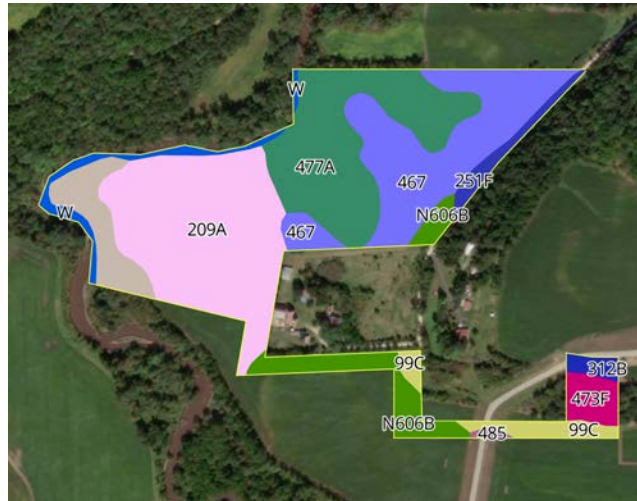


Minnesota / Olmsted County
44.1061, -92.6174
Kalmar / 03
107N / 15W
40.61 acres

TERRAIN

Generated: 5/3/2026

Soil Map



Soil Code	Soil Description	Acres	Drainage Class	CPI	WT Depth
209A	Kegonsa silt loam, 0 to 2 percent slopes	12.3	Well drained	74	N/A
477A	Littleton silt loam, 0 to 1 percent slopes	9.1	Somewhat poorly drained	100	18.1
467	Sawmill silty clay loam	8.8	Poorly drained	79	N/A
N606B	Richwood silt loam, 1 to 6 percent slopes	2.8	Well drained	99	N/A
465	Kalmarville silt loam	2.5	Poorly drained	20	N/A
99C	Racine silt loam, 6 to 12 percent slopes	1.3	Well drained	76	42.1
473F	Dorerton loam, 25 to 40 percent slopes	1.2	Well drained	4	N/A
W	Water	1.1	N/A	0	N/A
251F	Marlean silty clay loam, 25 to 40 percent slopes	0.9	Well drained	13	N/A
312B	Shullsburg silt loam, 2 to 6 percent slopes	0.5	Somewhat poorly drained	56	18.1
485	Lawler loam	0.1	Somewhat poorly drained	77	18.1

Total Acres	40.6
CPI Weighted Average	73.7

Data Source: NRCS Soil Survey

Minnesota / Olmsted County
 44.1061, -92.6174
 Kalmar / 03
 107N / 15W
 40.61 acres

Drainage Classification



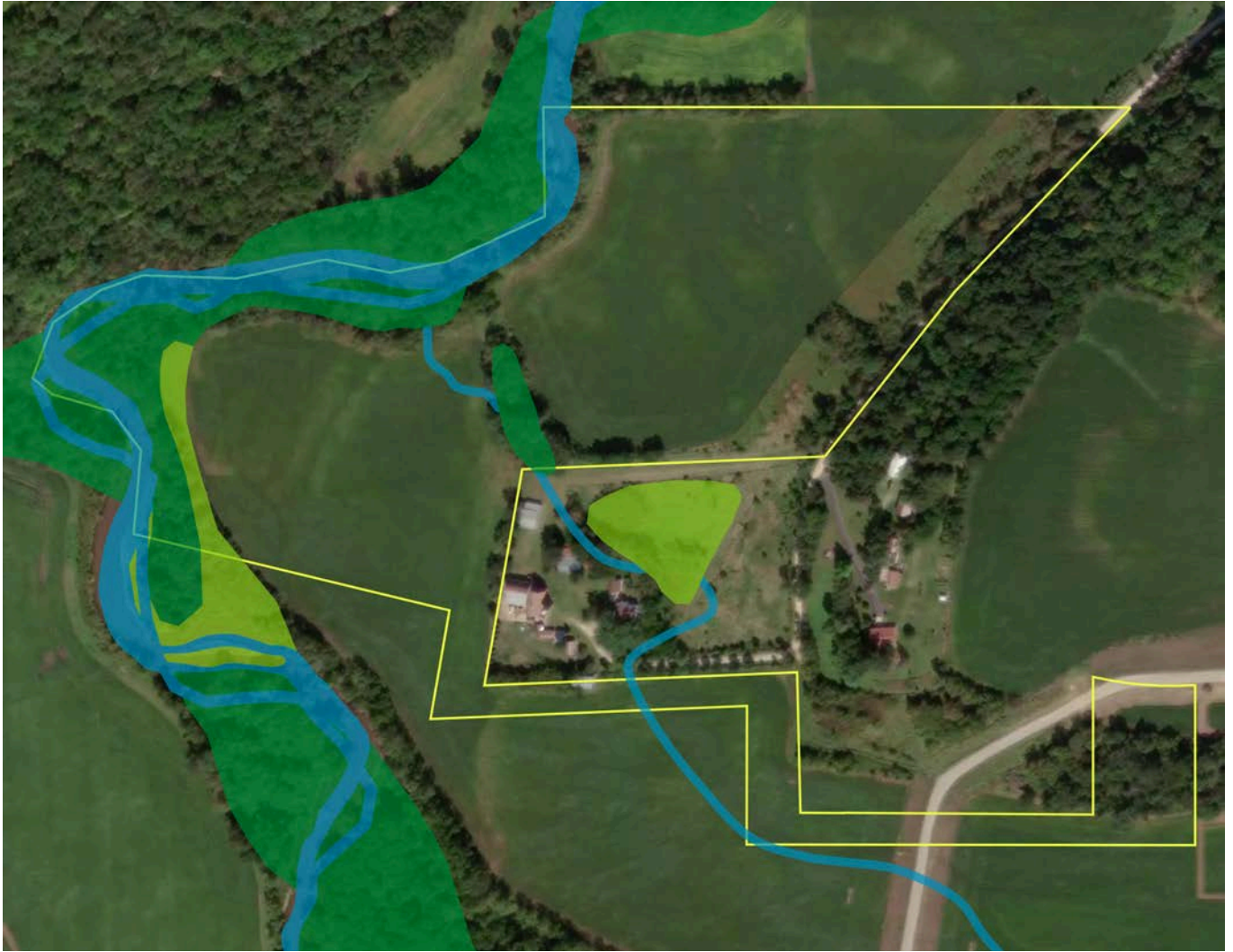
Key	Drainage Class	Acres(%)
	Well drained	47.00%
	Poorly drained	29.00%
	Somewhat poorly drained	25.00%

Data Source: NRCS Soil Survey

Minnesota / Olmsted County
 44.1061, -92.6174
 Kalmar / 03
 107N / 15W
 40.61 acres

TERRAIN
 Generated: 5/3/2026

Wetland

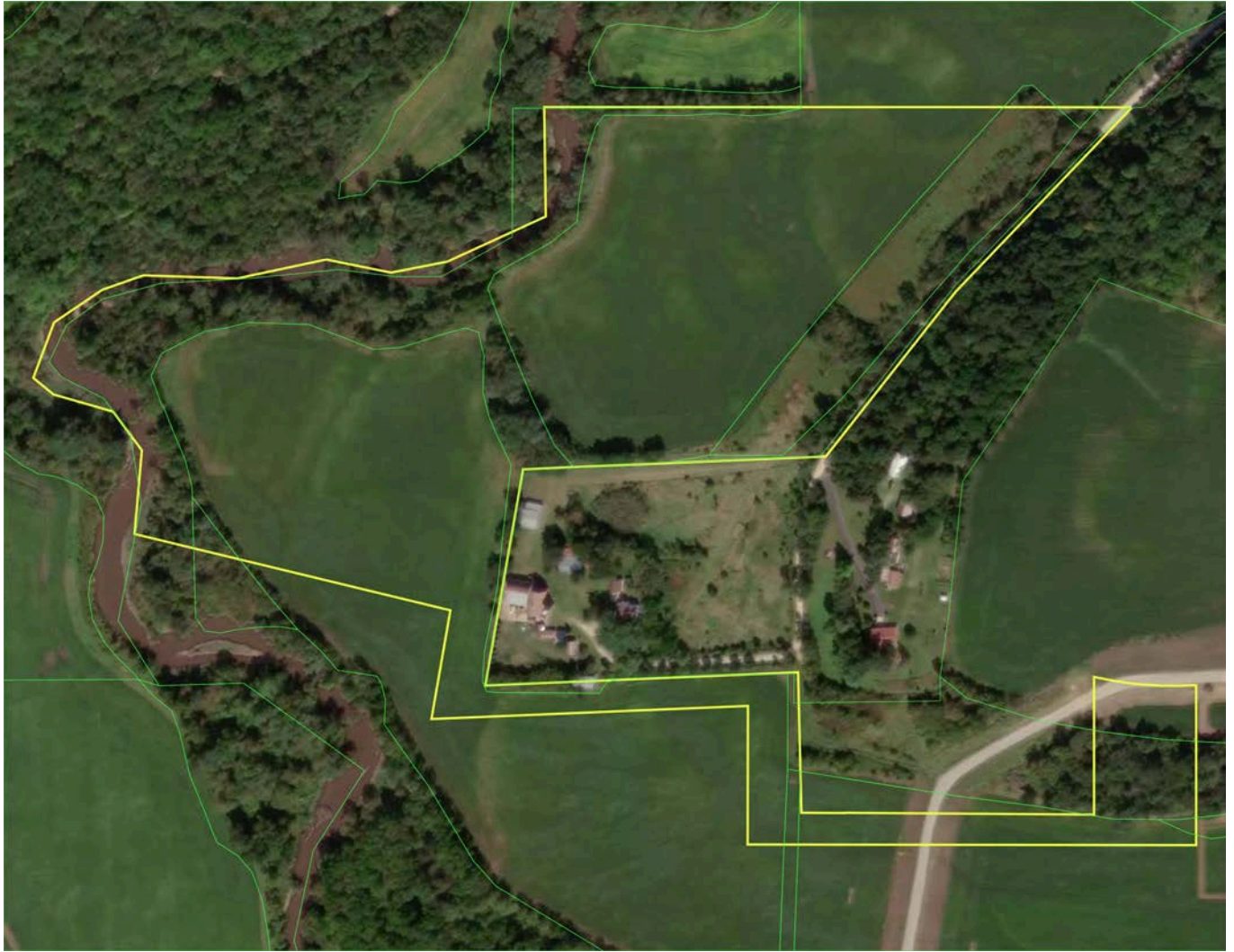


Key	Classification Code	Type	Acres
	PF01A	Freshwater Forested/Shrub Wetland	2.94
	R4SBC	Riverine	2.79
	PEM1A	Freshwater Emergent Wetland	0.56
Total			6.29

Data Source: US Fish & Wildlife Service - National Wetland Inventory

Wetland data shown is for planning purposes only; please contact your local USDA NRCS office for an official wetland determination.

Minnesota / Olmsted County
44.1061, -92.6174
Kalmar / 03
107N / 15W
40.61 acres



Data Source: 2008 FSA version of CLU boundaries

[Driving Directions](#)

44.1061, -92.6174



Minnesota / Olmsted County
44.1061, -92.6174
Kalmar / 03
107N / 15W
40.61 acres