



---

# Field Report

**Minnesota • Olmsted County**

Page / 03 • 107N / 15W

22.65 acres

Generated: 5/4/2026

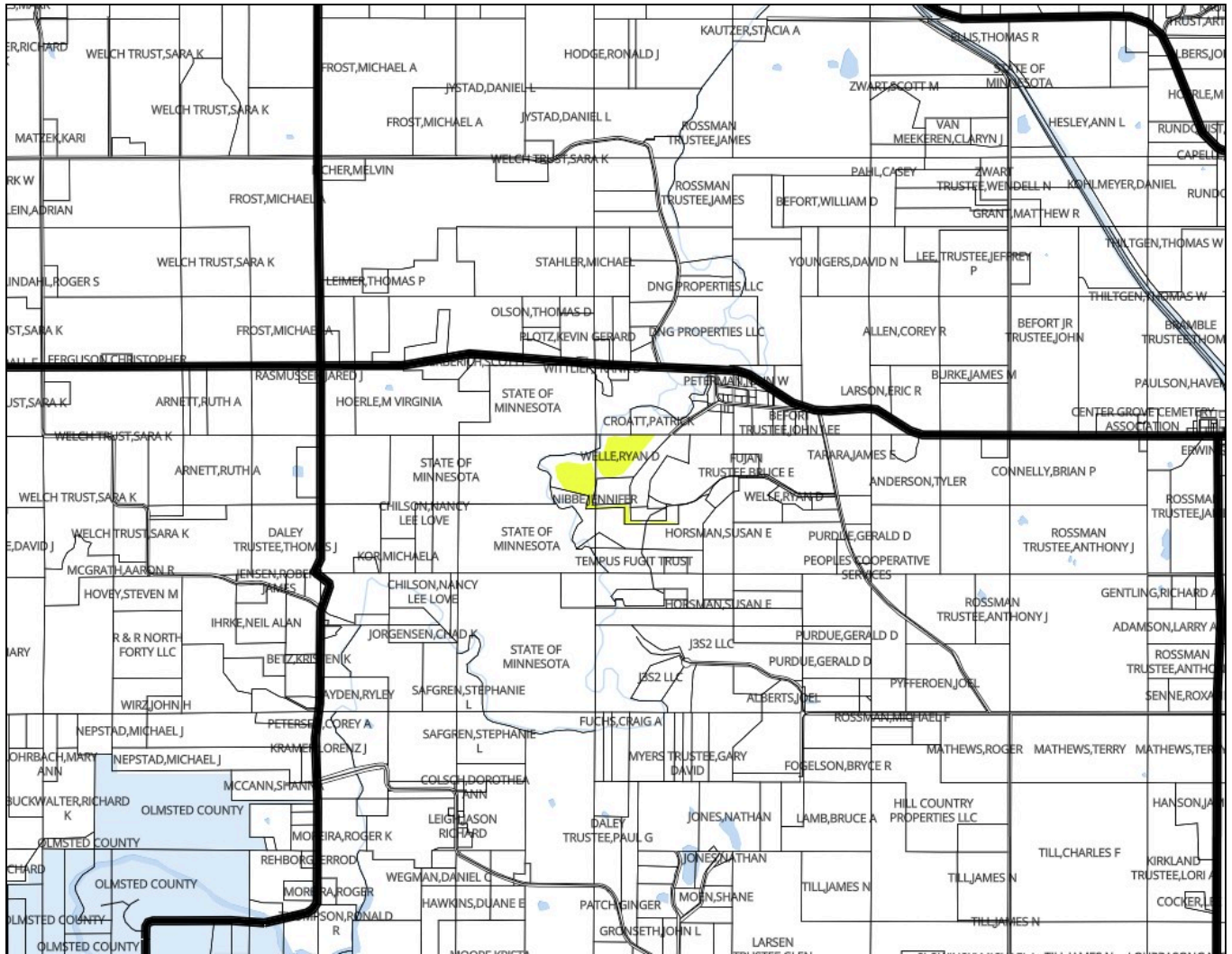
# Plat Map



107N

Kalmar

15W



Minnesota / Olmsted County  
44.1061, -92.6169  
Kalmar / 03  
107N / 15W  
22.65 acres

**TERRAIN**

Generated: 5/4/2026

# Soil Map



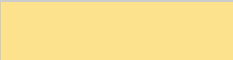
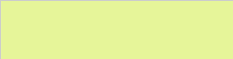

Soil Code	Soil Description	Acres	Drainage Class	CPI	WT Depth
209A	Kegonsa silt loam, 0 to 2 percent slopes	8.6	Well drained	74	N/A
477A	Littleton silt loam, 0 to 1 percent slopes	7.2	Somewhat poorly drained	100	18.1
467	Sawmill silty clay loam	4.5	Poorly drained	79	N/A
N606B	Richwood silt loam, 1 to 6 percent slopes	1.6	Well drained	99	N/A
99C	Racine silt loam, 6 to 12 percent slopes	0.7	Well drained	76	42.1
465	Kalmarville silt loam	0.1	Poorly drained	20	N/A
485	Lawler loam	0.0	Somewhat poorly drained	77	18.1

<b>Total Acres</b>	<b>22.7</b>
<b>CPI Weighted Average</b>	<b>84.7</b>

Data Source: NRCS Soil Survey

# Drainage Classification



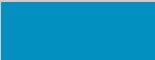

Key	Drainage Class	Acres(%)
	Well drained	48.00%
	Somewhat poorly drained	32.00%
	Poorly drained	20.00%

Data Source: NRCS Soil Survey

Minnesota / Olmsted County  
 44.1061, -92.6169  
 Kalmar / 03  
 107N / 15W  
 22.65 acres

# Wetland



Key	Classification Code	Type	Acres
	R4SBC	Riverine	0.12
	PEM1A	Freshwater Emergent Wetland	0.01
<b>Total</b>			<b>0.13</b>

Data Source: US Fish & Wildlife Service - National Wetland Inventory

Wetland data shown is for planning purposes only; please contact your local USDA NRCS office for an official wetland determination.



Data Source: 2008 FSA version of CLU boundaries

## [Driving Directions](#)

44.1061, -92.6169



Minnesota / Olmsted County  
44.1061, -92.6169  
Kalmar / 03  
107N / 15W  
22.65 acres