

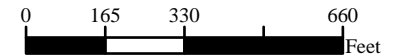
# Olmsted County Minnesota

## Farm 10071 Tract 8515

Phy. County: Olmsted, MN

2026 Program Year

2023 NAIP Imagery  
Map Created 04/01/2026

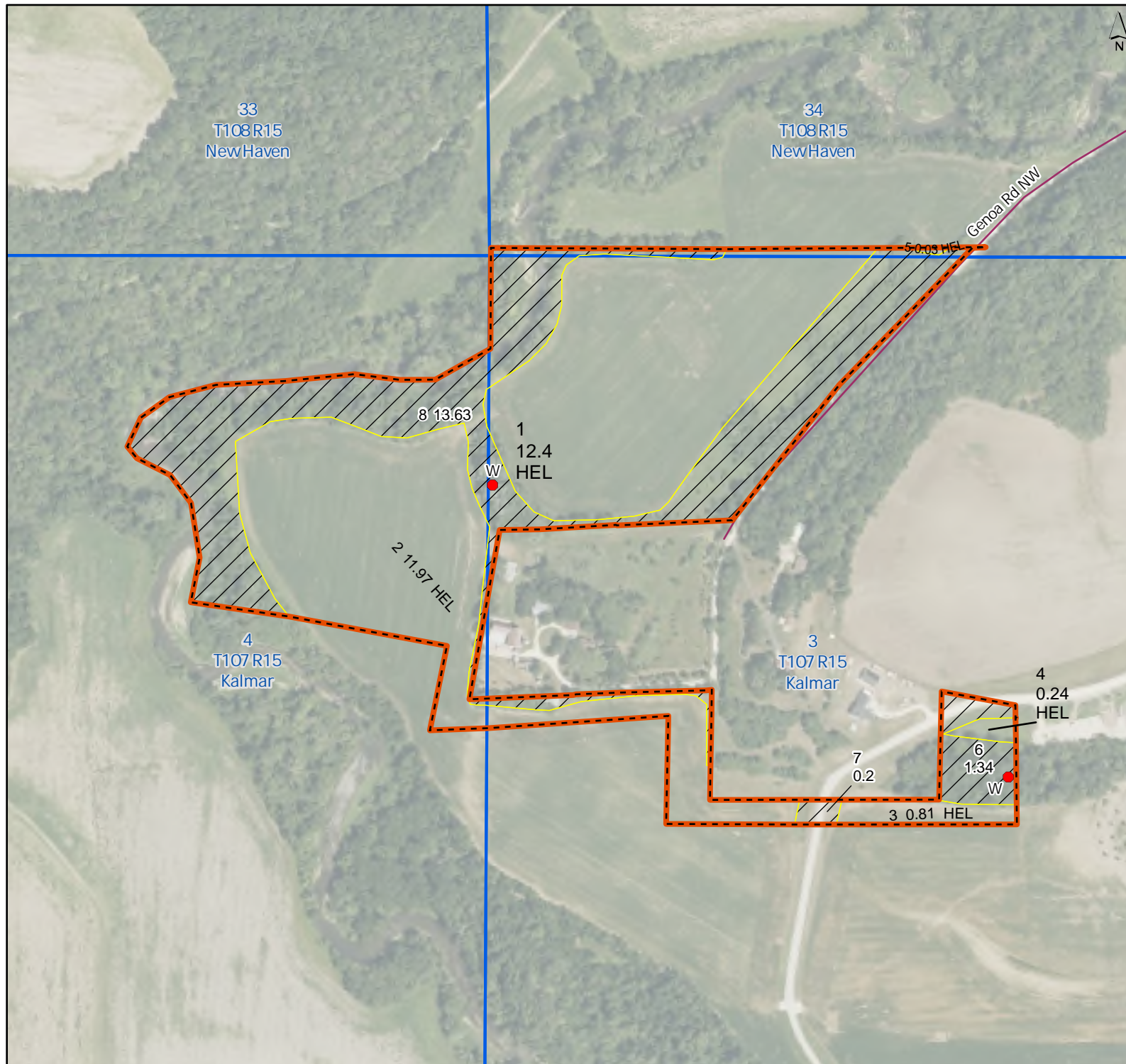


- Unless Otherwise Noted:  
 All fields are non-irrigated  
 Shares are 100% to operator  
 Corn = Yellow for Grain  
 Soybeans = Common for Grain  
 Wheat = HRS, HRW = Grain  
 Sunflowers = Oil, Non-Oil = Grain  
 Oats & Barley = Spring for Grain  
 Canola = Spring for Seed  
 Alfalfa = For Forage  
 Mix Forage AGM, GMA, IGS = for Forage  
 Rye = for Grain  
 Peas = Process  
 Beans = Dry Edible  
 Native Annual Grass = for Grazing

- Tract Boundary
- Noncropland
- Cropland
- PLSS

- Wetland Determination Identifiers
- Restricted Use
  - Limited Restrictions
  - Exempt from Conservation Compliance Provisions

Tract Cropland Total: 25.45 acres



United States Department of Agriculture (USDA) Farm Service Agency (FSA) maps are for FSA Program administration only. This map does not represent a legal survey or reflect actual ownership; rather it depicts the information provided directly from the producer and/or National Agricultural Imagery Program (NAIP) imagery. The producer accepts the data 'as is' and assumes all risks associated with its use. USDA-FSA assumes no responsibility for actual or consequential damage incurred as a result of any user's reliance on this data outside FSA Programs. Wetland identifiers do not represent the size, shape, or specific determination of the area. Refer to your original determination (CPA-026 and attached maps) for exact boundaries and determinations or contact USDA NRCS. USDA is an equal opportunity provider, employer, and lender.

