

MAP OF
ANMOTH SPRINGS
 FULTON COUNTY,
 ARKANSAS

SCALE
 1" = 100'

W. W. B. Co.

360

P. P. B. Hynson '63

J. S. Daddrick

Missouri

MISSOURI

AVE

Scale 1/2 in. = 100 ft.

11.002

RESERVE

18

WARREN FORK

SPRING RIVER

HUNTER ST

GOLDSMITH

5th 8 1/2 in. = 100 ft.

MAMMOTA SPRING CABINS

SUBDIVISION OF PARTS OF LOT 18, LOT 19, AND THE 200' RESERVE OF THE CITY OF MAMMOTA SPRING PER OFFICIAL PLAT. ALSO LOCATED IN THE NE 1/4 AND THE SE 1/4 SECTION 8, TOWNSHIP 21 NORTH, RANGE 5 WEST, FULTON COUNTY, ARKANSAS, AS DESCRIBED ON PAGE 2 HEREOF.

FILED
OFFICE OF THE
CIRCUIT CLERK

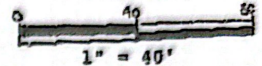
BOOK 4
PAGE 187

APR 08 1992

FULTON COUNTY,
ARKANSAS

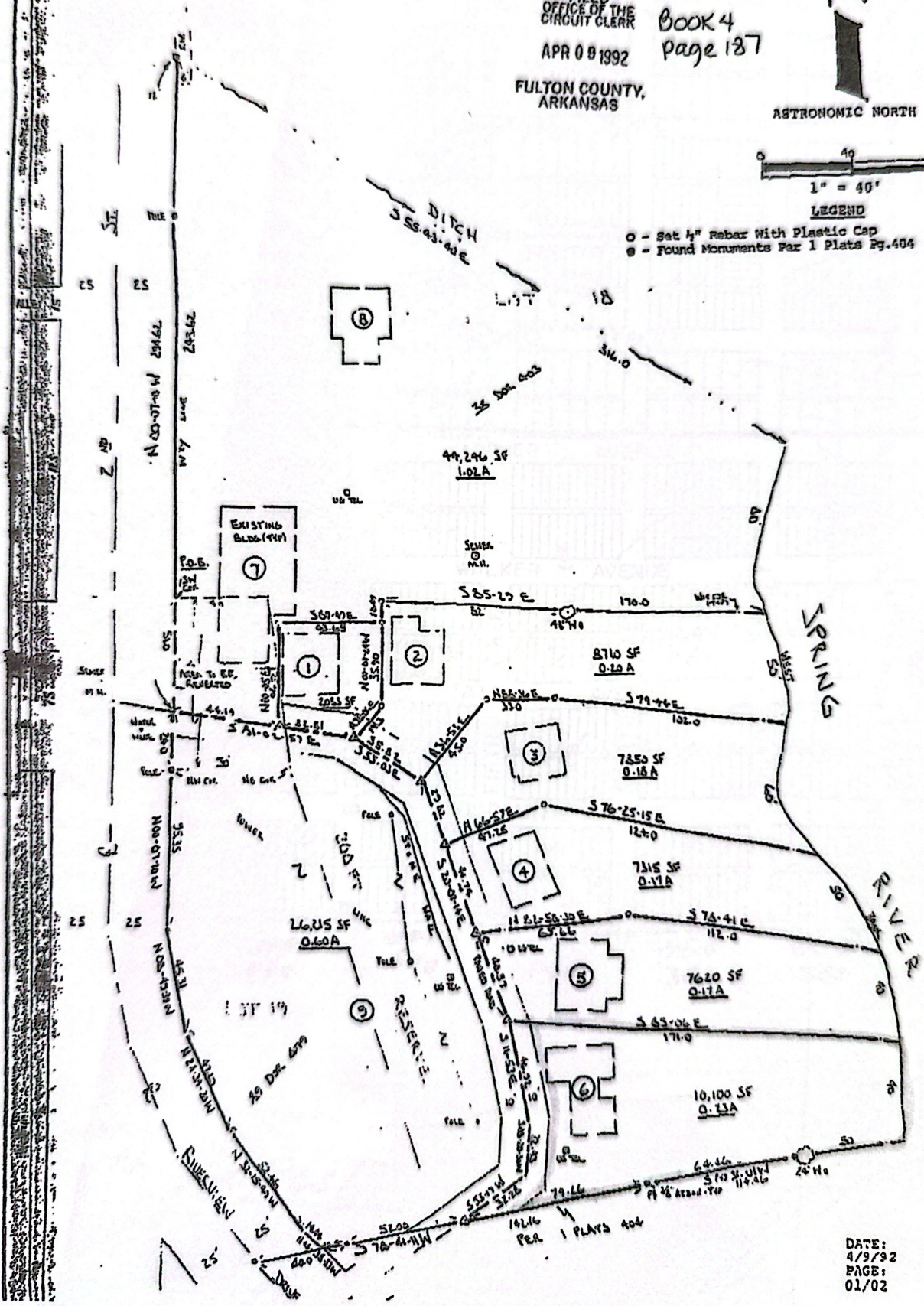


ASTRONOMIC NORTH



LEGEND

- - Set 4" Rebar With Plastic Cap
- - Found Monuments Per 1 Plats Pg. 404



DATE:
4/9/92
PAGE:
01/02