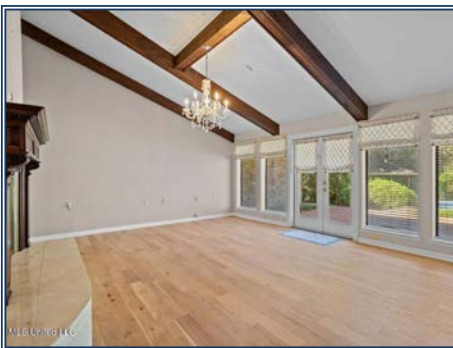
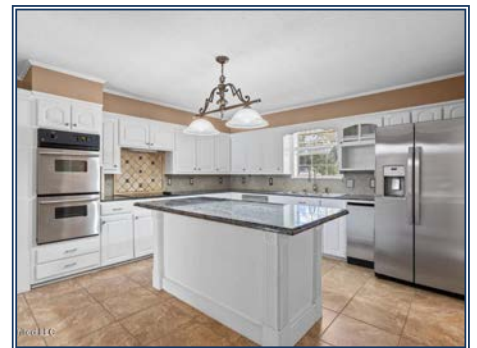
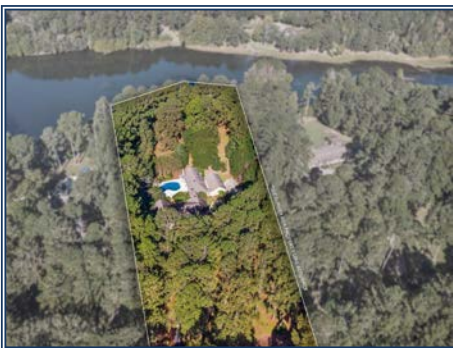




Nestled within one of the area's most prestigious neighborhoods, this 1974 executive brick home offers privacy, elegance, and over 5,300 square feet of timeless living space. Set far from the road, this luxurious home is reached by a long U-shaped drive framed by mature azaleas and crepe myrtles that explode with color each spring. Inside, the home blends classic craftsmanship with grand proportions. The formal living room features vaulted ceilings and a fireplace, while an oversized den and formal dining room with intricate wood flooring invite both comfort and sophistication. A cheerful breakfast room with a bay window overlooks the grounds. Through a breezeway, the primary suite wing offers a true retreat with its own fireplace, chandelier, sitting area, and French doors leading to the inground pool. His-and-hers bathrooms and separate closets add to the suite's luxury. The pool courtyard feels like a private oasis with a gazebo and trellis leading toward the backyard and a serene neighborhood lake—the perfect finishing touch to this stately property. This is a rare opportunity to own a remarkable home surrounded by beauty, space, and privacy in an upscale setting. Priced below appraisal, and only 1.5 hours from NOLA, this home can be your get away, or your dream!

1001 Pinehurst Place, McComb, MS

31.201805,-90.504555 GPS



\$395,000

3.37± Acres
MLS #4129920



Kelly Parker
mkparker315@gmail.com
Office: (601) 250-0017
Cell: (601) 324-9760
SouthernStatesRealty.com