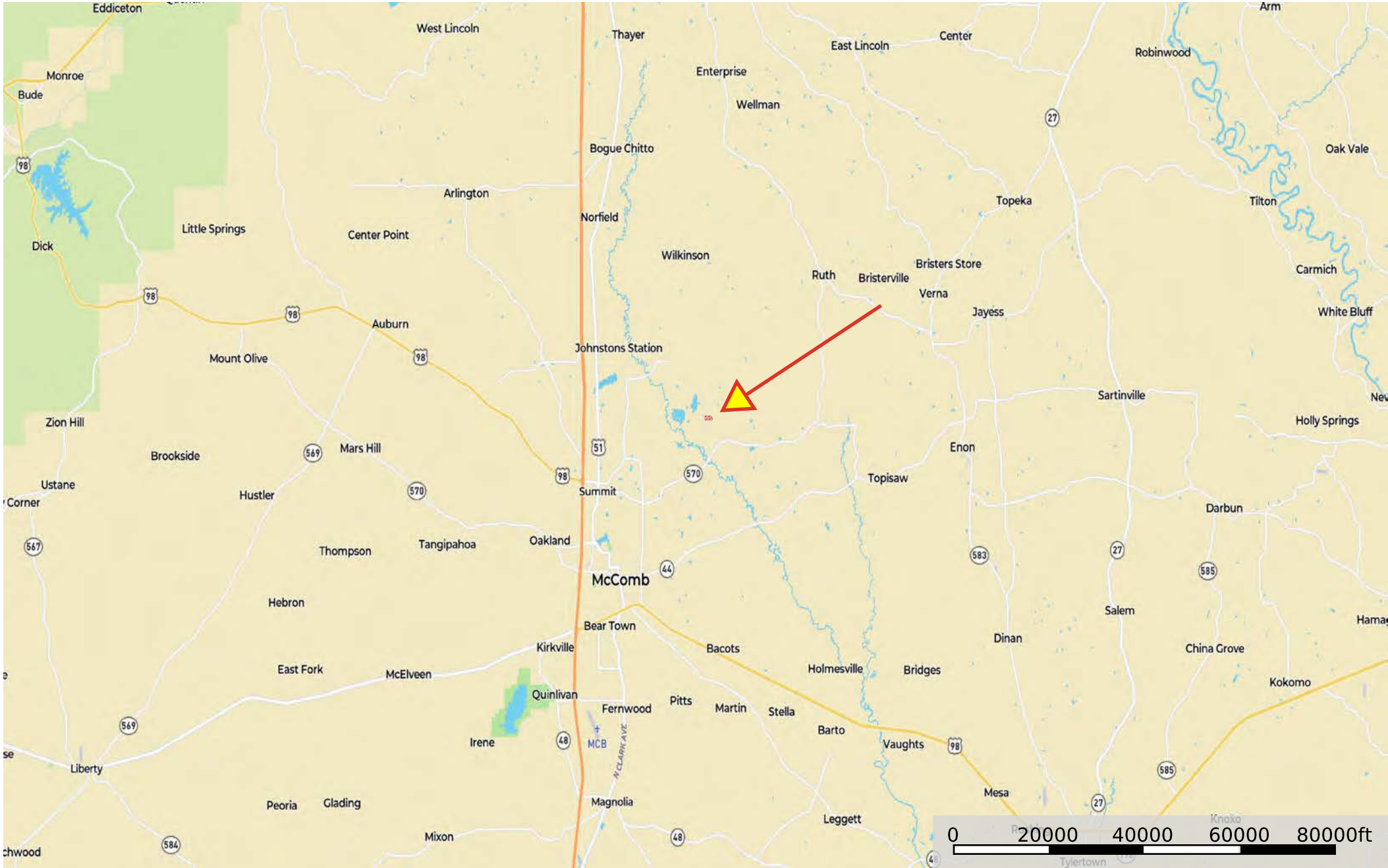
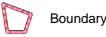


11.5 ac river road n BW
Mississippi, AC +/-



11.5 ac river road n BW
Mississippi, AC +/-

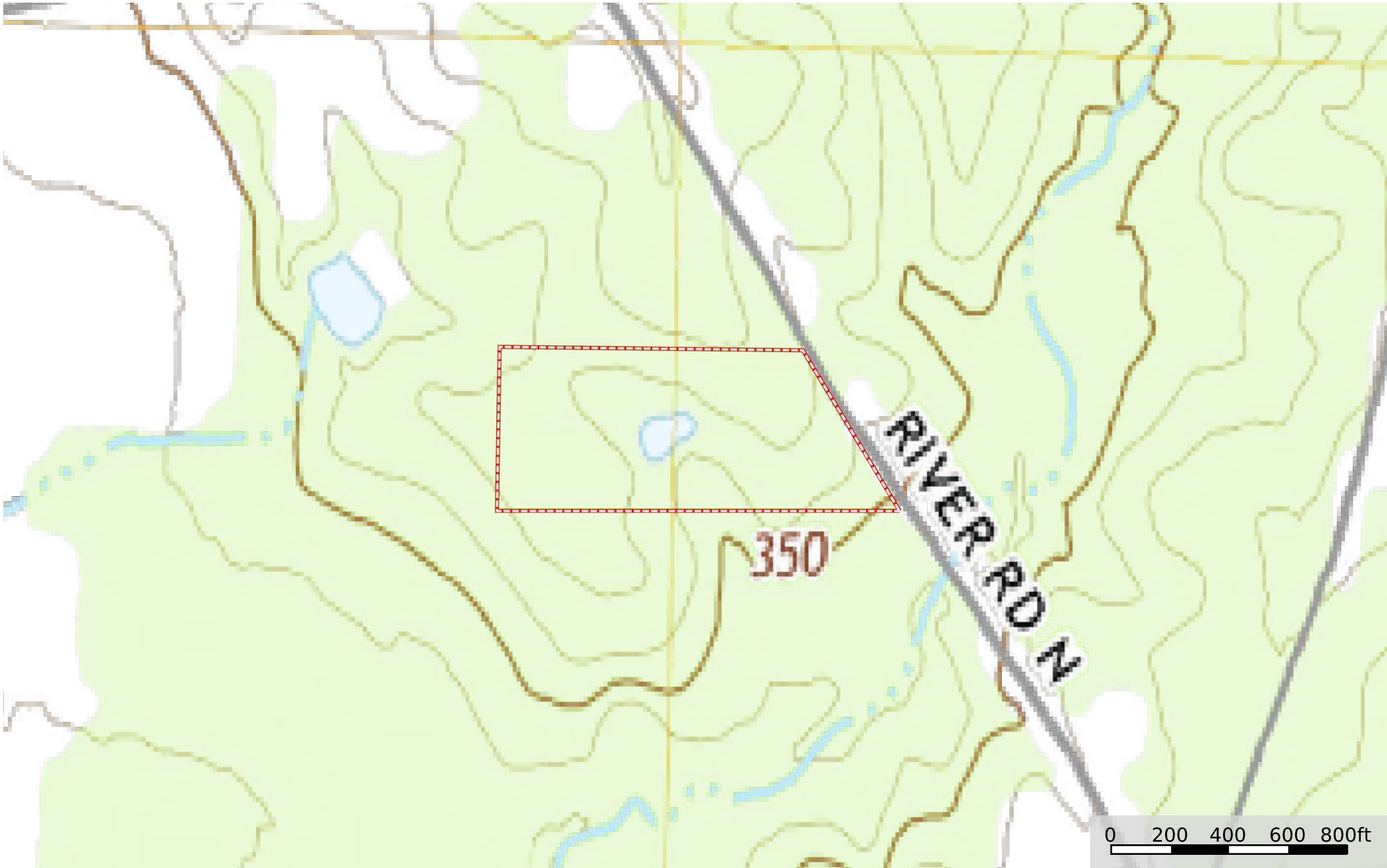


11.5 ac river road n BW
Mississippi, AC +/-



 Boundary  Stream, Intermittent  River/Creek  Water Body

11.5 ac river road n BW
Mississippi, AC +/-



 Boundary