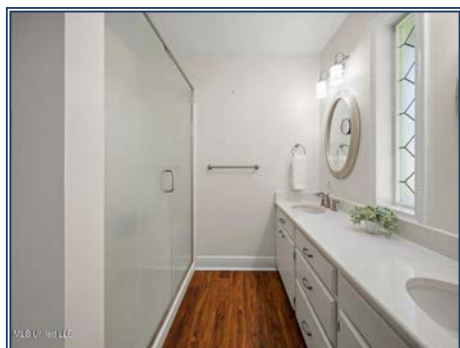
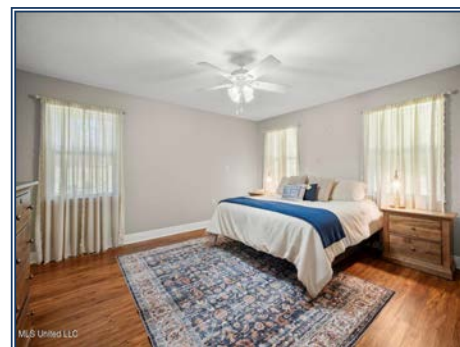
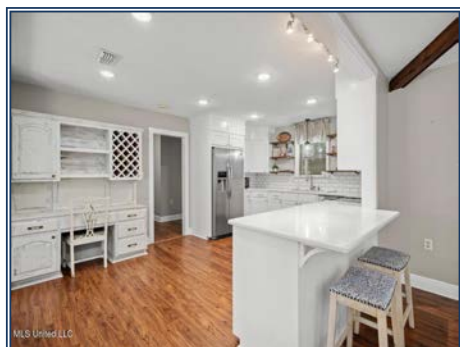




Discover the perfect blend of modern updates and country charm with this completely renovated 4-bedroom, 2.5-bath home situated on 7.5 acres just minutes from town. Inside, you'll find an open floor plan designed for both everyday living and entertaining. The living room boasts a vaulted ceiling with exposed beams and a cozy fireplace as the centerpiece. The kitchen is equipped with quartz countertops, a convenient built-in desk space with a wine rack, and a seamless flow into the dining and living areas. This home features four generously sized bedrooms, including a primary suite with an updated bath, plus a convenient half bath for guests. Every detail has been thoughtfully designed to provide modern comfort in a timeless setting. The 7.5-acre property is shaded with beautiful mature trees, offering both privacy and tranquility. The screened back porch is perfect for enjoying pleasant evenings outdoors. There are also multiple outbuildings, including a garden shed, a charming "she shed," a pole barn, and an RV port—making this property as functional as it is inviting. Situated just outside of town, you'll enjoy the peace of country living while remaining close to shopping, dining, and schools. Don't wait to call your favorite agent for your private showing!

1064 Pine Cone Lane, Summit, MS

31.275834, -90.446214 GPS



**\$325,000**

7.5± Acres  
4 Bed/2.5 Bath  
MLS #4127612



**Kristen McBeth**

kmcbethrealty@gmail.com

Office: (601) 250-0017

Cell: (601) 249-6101

SouthernStatesRealty.com