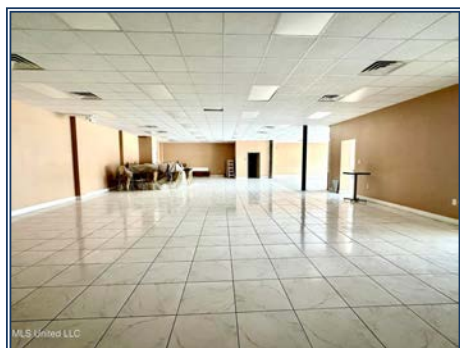
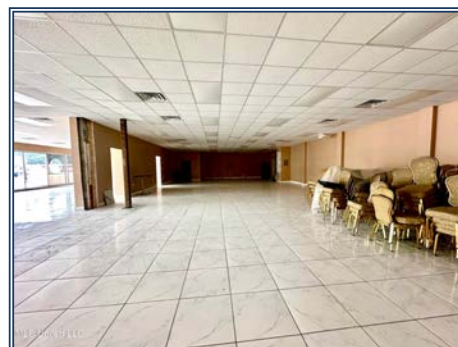
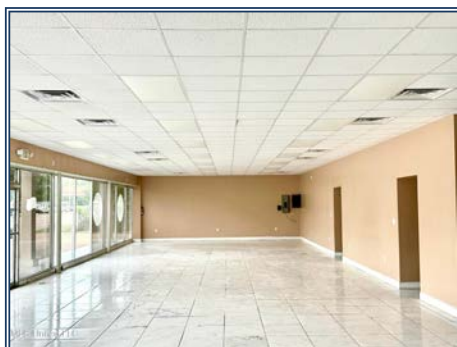




Large commercial building with ample parking on a high-traffic-count highway, ready for your business! Sitting on 1.34 acres with approx. 14,000 vehicles per day gives you tons of exposure! This almost 5000sqft open building comes with 2 restrooms, a kitchen area with hookups for appliances, and 2 oversized rooms that could be utilized for a multitude of business options! Also has a large side lot for parking, or a separate business opportunity! This facility is also available for lease.

529 W. Presley Blvd, McComb, MS

31.226602, -90.461501 GPS



\$375,000

1.38± Acres
MLS #4126730



Kelly Parker
mkparker315@gmail.com
Office: (601) 250-0017
Cell: (601) 324-9760
SouthernStatesRealty.com