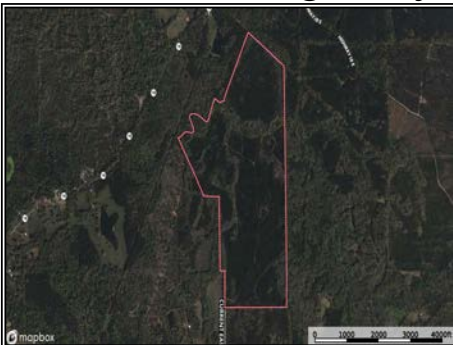




Welcome to Full Moon. This property is 302+- acres in the Hermanville community of Claiborne County, MS. Historically, this area has been proven to produce great deer and turkey numbers, as well as quality big bucks that Claiborne County is known for. As evident in the trail camera photos, this tract is no different. This tract has much to offer, including a secluded campsite sitting a quarter of a mile off the road, large food plots, beautiful pine and hardwood timber, a couple of different flowing creeks, and a pond. To find a tract with this many features is rare. The diversity of this tract is one of the reasons it holds a ton of game. The towering hardwood bottoms with the creeks running through, sitting next to the pines, provide deer and turkeys with everything they need throughout the year. The tract has great access due to the internal trail system, and creek crossings are in place to allow for an easy buggy ride anywhere you'd like to go. Having a campsite a quarter of a mile off the road will allow you to have the ultimate privacy, where you can build a camp and relax even outside of hunting season. The food plots are in place, the deer are on camera, and the campsite is just waiting for you to come home. Properties in this area are highly sought after, and this one is ready to go. Give your favorite realtor a call today and schedule your private showing. Owner/agent.

3228 Highway 548, Hermanville, MS

31.970849, -90.810730 GPS



302± Acres
MLS #1426539
\$1,100,000



Slade Priest
sladepriest1@gmail.com
Office: (601) 250-0017
Cell: (601) 888-0094
SouthernStatesRealty.com



Ryan Wascom
ryanwascom@yahoo.com
Office: (601) 250-0017
Cell: (985) 5075336
SouthernStatesRealty.com