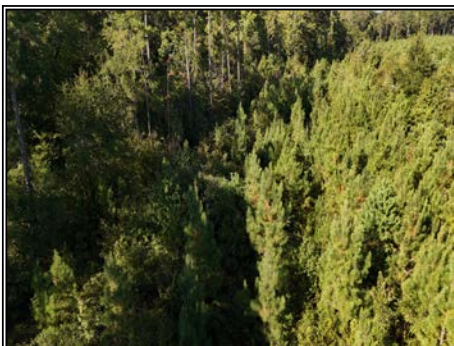




Small, manageable tract with big upside. This 14.42± acre timber property sits just outside Marion and has a proven history for hunting. Managed pine timber gives you immediate cover and long-term value, while the layout sets up well for a couple of bow or rifle sets. Access is from Mason-Dixon Line Rd through a Weyerhaeuser property. If you're looking for a low-maintenance hunting spot or a solid land hold in North LA, this one checks the boxes.

Mason Dixon Line Rd., Marion, LA

3.98018, -92.21371 GPS



14.42± Acres
MLS #216522
\$49,500



Hunter Smith
hunter@hunternegycorp.com
Office: (601) 250-0017
Cell: (318) 245-6965
SouthernStatesRealty.com



Josh Beckham
beckhamjosh5@gmail.com
Office: (601) 250-0017
Cell: (318) 548-6377
SouthernStatesRealty.com