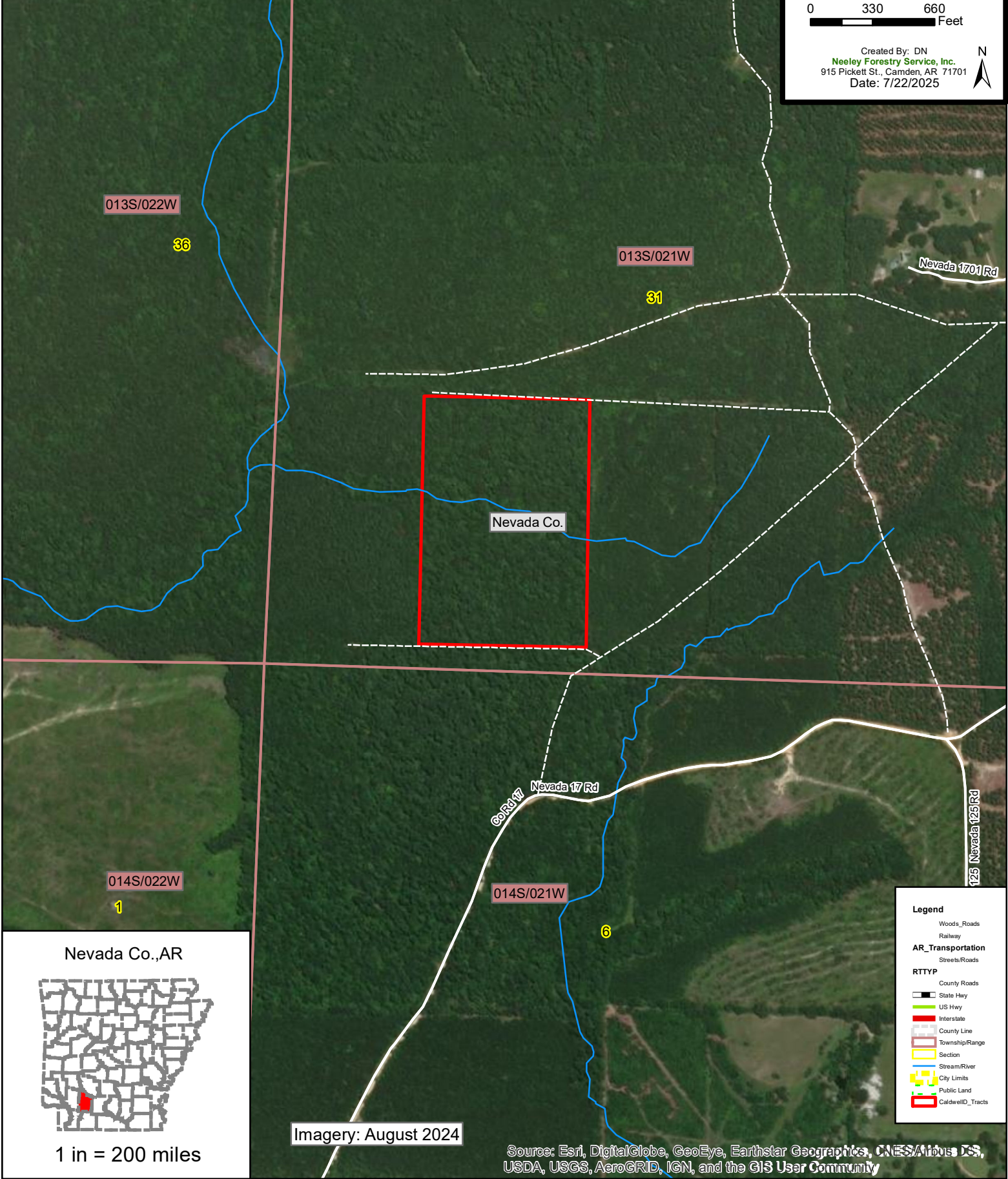




Aerial Map
Darrell Caldwell
 +/- 26.864 acres (per Survey)
 Sec. 31-13S/21W
 Nevada Co., AR

1 in = 660 feet
 0 330 660
 Feet

Created By: DN
 Neeley Forestry Service, Inc.
 915 Pickett St., Camden, AR 71701
 Date: 7/22/2025



013S/022W

36

013S/021W

31

Nevada 1701 Rd

Nevada Co.

014S/022W

1

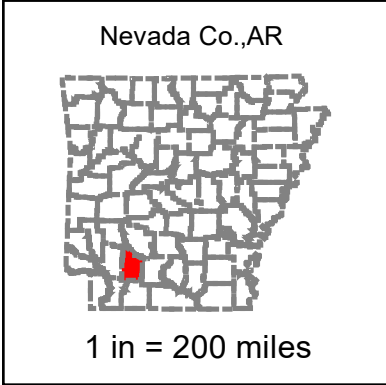
014S/021W

6

60 Rd W

Nevada 17 Rd

125 Nevada Rd



Imagery: August 2024

Legend	
Woods/Roads	Woods/Roads
Railway	Railway
AR_Transportation	
Streets/Roads	Streets/Roads
RTTYP	
County Roads	County Roads
State Hwy	State Hwy
US Hwy	US Hwy
Interstate	Interstate
County Line	County Line
Township/Range	Township/Range
Section	Section
Stream/River	Stream/River
City Limits	City Limits
Public Land	Public Land
Caldwell_ID_Tracts	Caldwell_ID_Tracts

Source: Esri, DigitalGlobe, GeoEye, Earthstar Geographics, CNES/Airbus DS, USDA, USGS, AeroGRID, IGN, and the GIS User Community