

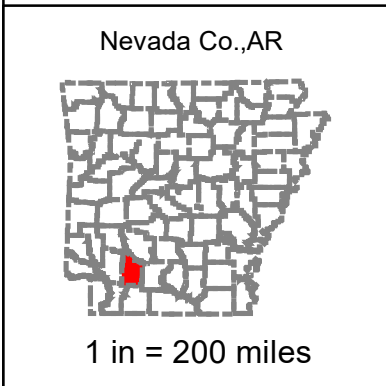
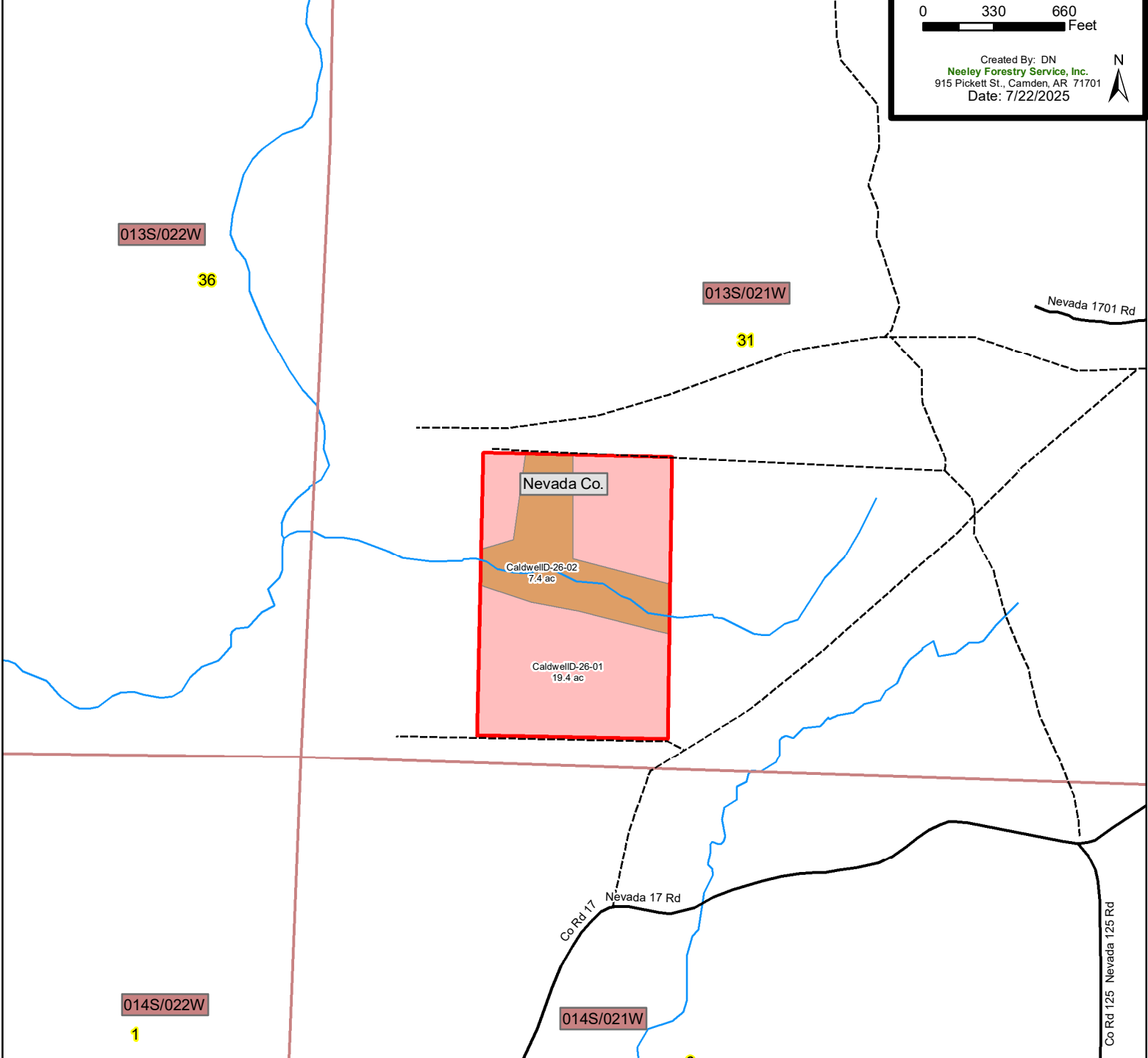


TType Map  
**Darrell Caldwell**  
 +/- 26.864 acres (per Survey)  
 Sec. 31-13S/21W  
 Nevada Co., AR

1 in = 660 feet

0 330 660 Feet

Created By: DN  
 Neeley Forestry Service, Inc.  
 915 Pickett St., Camden, AR 71701  
 Date: 7/22/2025



**Legend**

**Stand\_ID**

- 01-Mostly Pine, Upland (+/- 19.4 ac)
- 02-Mostly Hardwood, Bottoms (+/- 7.4 ac)

**Legend**

- Woods\_Roads
- Railway
- AR\_Transportation**
- Streets/Roads
- RTTYP**
- County Roads
- State Hwy
- US Hwy
- Interstate
- County Line
- Township/Range
- Section
- Stream/River
- Pond/Lake
- City Limits
- Public Land
- CaldwellID\_Tracts