

FOR SALE



~~\$225,000~~
\$215,000

242 E Madison St, Burns, OR 97720

Website Info



Presented By

Jake Blackburn & Curt Blackburn
United Country Jett Blackburn Real Estate
707 Ponderosa Village, Burns, OR 97720
(J) (541) 413-5774 | (C) (541) 413-5777
jake@jettblackburn.com | curt@jettblackburn.com
www.jettblackburn.com



ADDRESS: 242 E Madison St, Burns, OR 97720
LEGAL: 23S31E07-CD-05700
TAXES: \$2,027.63– Per County Records
FINANCING: Cash or Bank Financing
YEAR BUILT: 1944
SQ. FT.: 1,234 sq ft (+/-) w/ 868 sq ft (+/-) Basement – Per County Records
ACREAGE: .23 acres
HEAT SOURCE: F/A Electric, Fireplace
BEDROOMS: 4 Bedrooms
BATHROOMS: 1.75 Bathrooms
APPLIANCES: Range, BI Hood, BI Dishwasher, Dryer, Washer
GARAGE: Attached Single Car
PRICE: ~~\$225,000~~ **Reduced to \$215,000**

Presented By:



Jake Blackburn
(O) (541)413-5660
(C) (541)-413-5774
jake@jettblackburn.com



Curt Blackburn
(O) (541)413-5660
(C) (541)-413-5777
curt@jettblackburn.com

*****Seller willing to contribute up to \$20,000 in closing costs*****

Charming Home with Room to Grow in Burns, OR

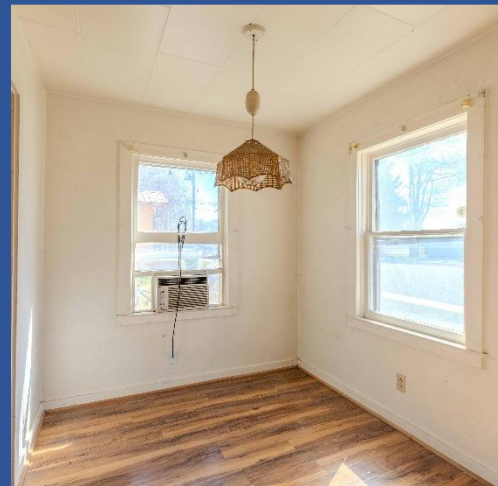
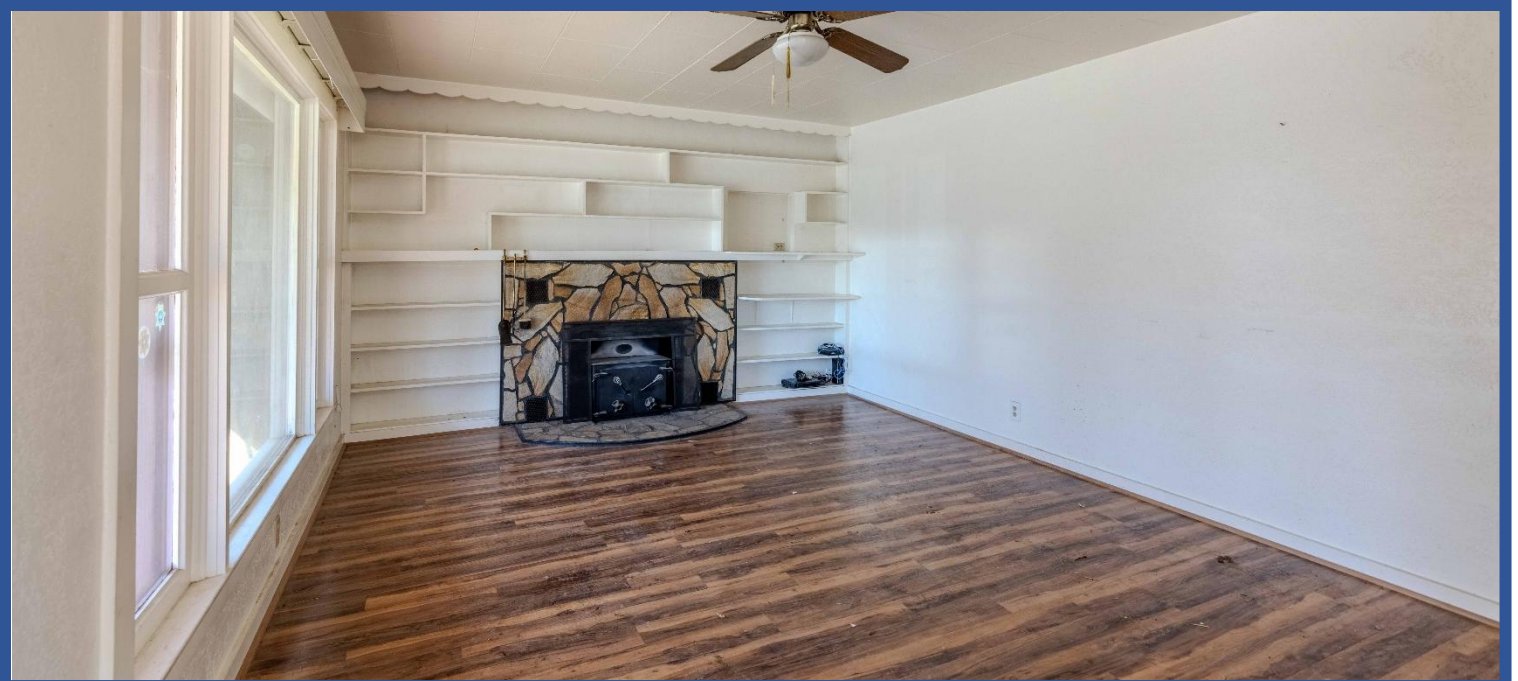
Welcome to 242 E Madison St, a well-located Eastern Oregon home offering plenty of potential on a spacious corner lot. With a perimeter fence, carport, RV cover, and more, this property is set up for convenience and functionality.

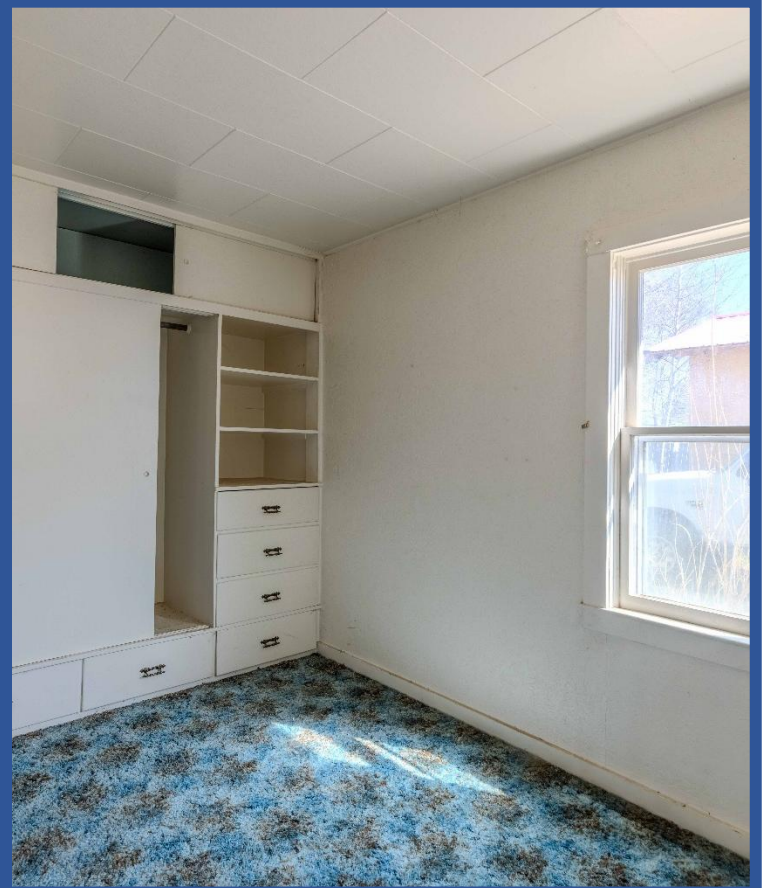
The home itself features 1,234 sq. ft. of living space plus an 868 sq. ft. basement and attached garage, providing ample room for storage, hobbies, or expansion. Inside, the layout includes 4 bedrooms and 1.75 bathrooms, with one of the bathrooms located downstairs—ideal for flexible living arrangements. This floorplan makes it a comfortable choice for families or anyone needing extra space.

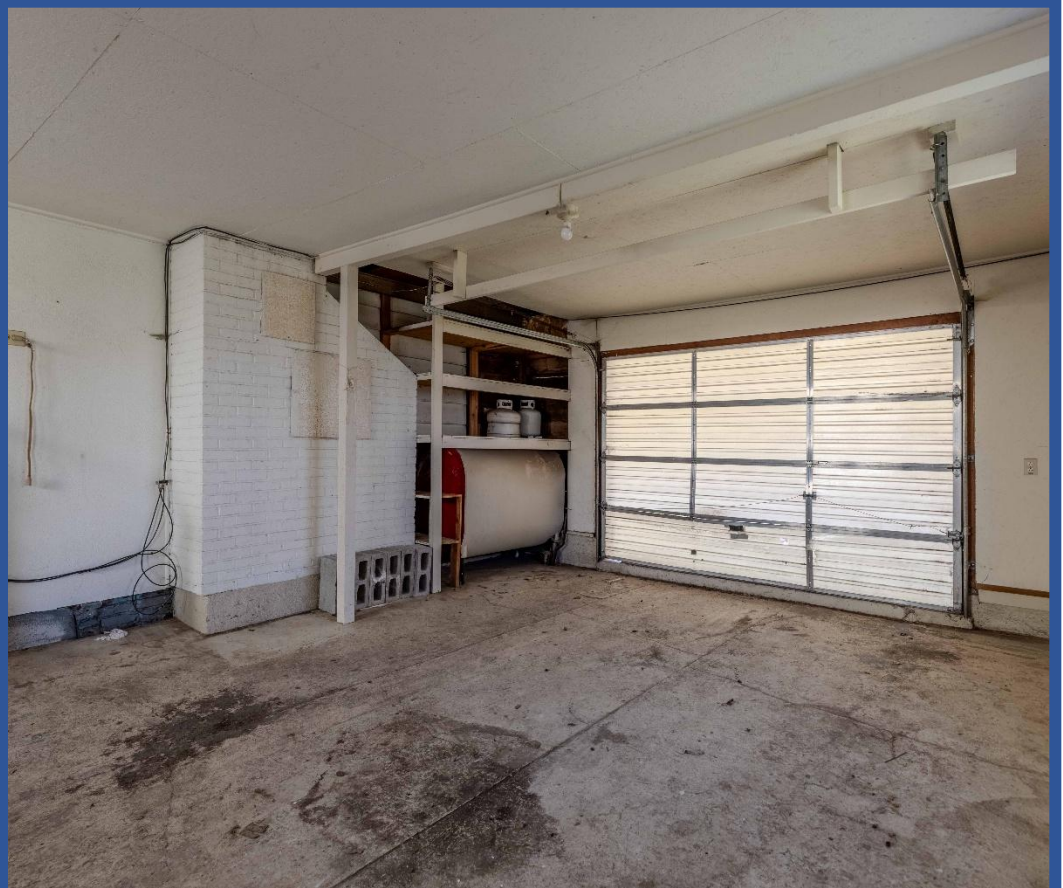
Situated in a great location in Burns, this property blends opportunity with practicality. Whether you're looking for a family home to personalize or a solid investment property, 242 E Madison St offers incredible potential to make it your own.



The seller and his agent make these representations in good faith, from personal knowledge and experience. However, the buyer should inspect this property or cause this property to be inspected by knowledgeable persons so that the buyer may purchase without relying upon any representations made by the seller or his agent. Also, unless otherwise specified we, Jett Blackburn Real Estate, Inc. agents, represent the seller on all our listings.







242 E Madison St, Burns - Shreeve
Oregon, AC +/-



- Boundary
- Forest Service
- State Land
- Fish and Wildlife
- National Park
- Other
- BLM
- Local Government

United County Jett Blackburn Real Estate (map for illustration purposes only)
P: 541-413-5660 www.jettblackburn.com 707 Ponderosa Village, Burns, OR 97720

id. The information contained herein was obtained from sources deemed to be reliable. Land id™ Services makes no warranties or guarantees as to the completeness or accuracy thereof.

