

FOR SALE



~~\$225,000~~
\$215,000

140 S Ogden Ave, Hines, OR 97738

Website Info



Presented By

Jake Blackburn & Curt Blackburn
United Country Jett Blackburn Real Estate
707 Ponderosa Village, Burns, OR 97720
(J) (541) 413-5774 | (C) (541) 413-5777
jake@jettblackburn.com | curt@jettblackburn.com
www.jettblackburn.com



ADDRESS: 140 S Ogden Ave, Hines, OR 97738
LEGAL: 23S30E23-DA-06100
TAXES: \$1,656.78 – Per County Records
FINANCING: Cash or Bank Financing
YEAR BUILT: 1954
SQ. FT.: 1,274 Sq.Ft. (+/-) with 300 Sq.Ft.(+/-) Basement – Per County Records
ACREAGE: .21 acres
HEAT SOURCE: Fireplace, F/A Oil Furnace
BEDROOMS: 3 Bedrooms
BATHROOMS: 1.5 Bathrooms
APPLIANCES: BI Hood Vent, BI Dishwasher, Range, Washer, Dryer
PRICE: \$225,000.00 **Reduced to \$215,000**

Presented By:



Jake Blackburn
(O) (541)413-5660
(C) (541-413-5774
jake@jettblackburn.com



Curt Blackburn
(O) (541)413-5660
(C) (541-413-5777
curt@jettblackburn.com

Located just a half block off Highway 20, this Eastern Oregon home sits on a spacious .21-acre lot with a 6-foot cedar fenced backyard, a garden shed with lean-to, covered front entry, concrete sidewalks, and several mature trees, including an apple tree. The property also includes a gravel driveway, a comp roof, lap siding with a mix of metal and Hardie plank, and vinyl windows.

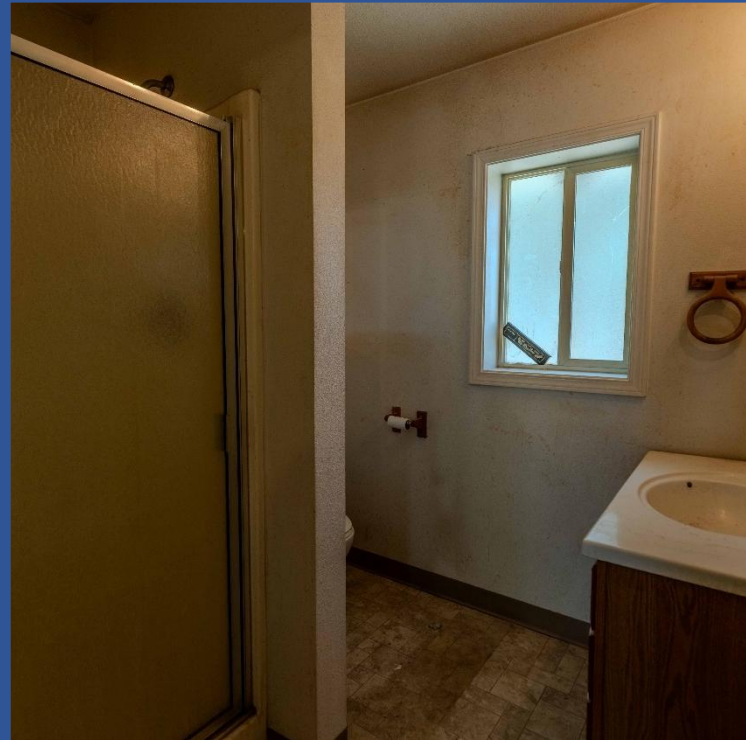
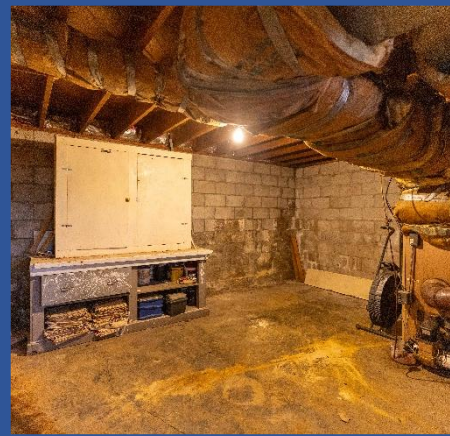
The 1,274 sq. ft. home offers 3 bedrooms and 1.5 bathrooms. The front entry opens to the family room, which features laminate flooring, a fireplace, and a ceiling fan. A hallway off the family room leads to a central half-bath that also houses the washer and dryer. This bathroom sits conveniently between two bedrooms, both with carpet flooring, large closets, and one with the bonus of an additional closet.

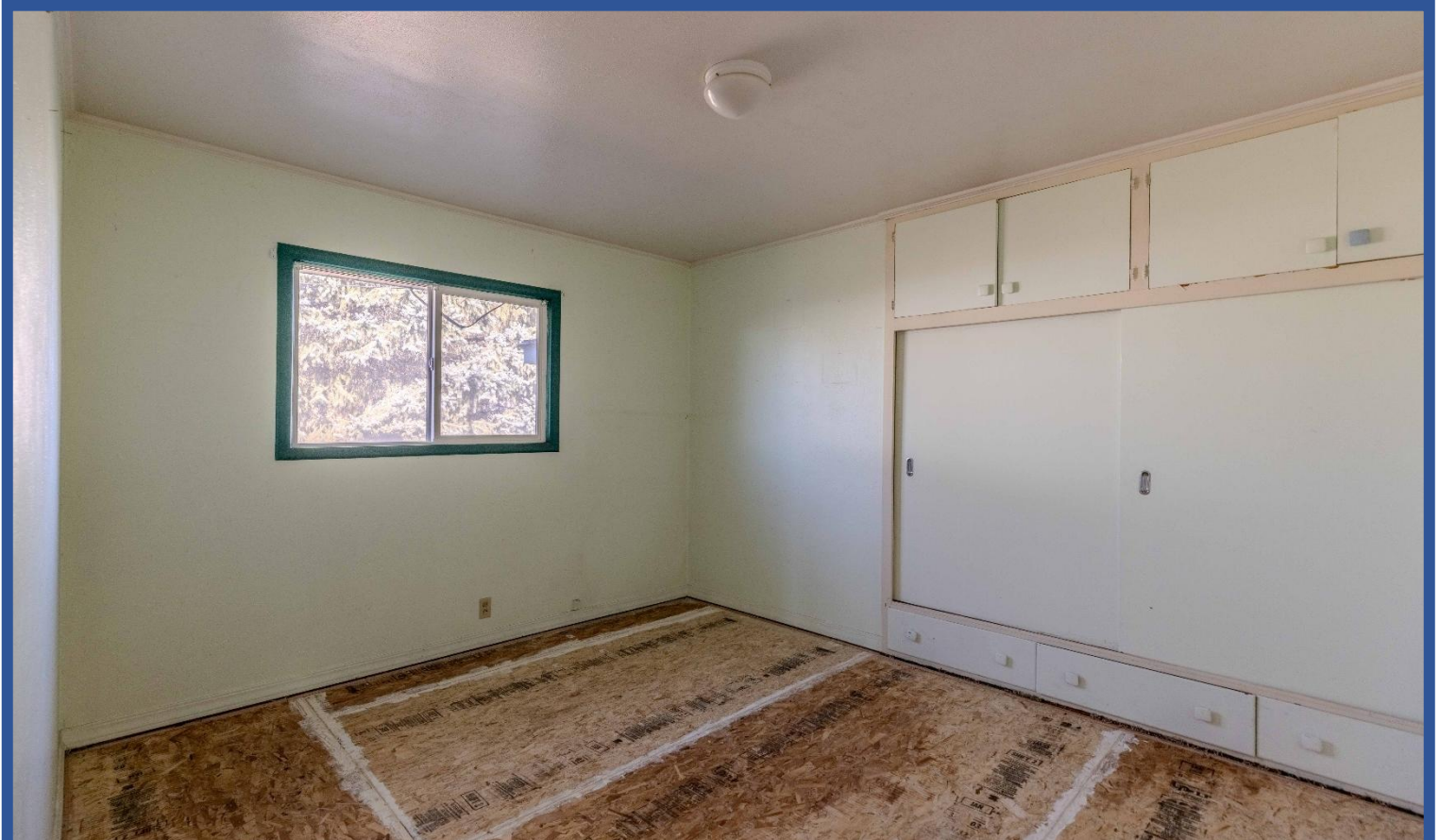
The kitchen is located off the family room and opens to a dining area, creating a bright and inviting space. It features plenty of upper and lower cabinets, generous counter space, a built-in dishwasher, refrigerator, hood vent, and range. Several windows allow in ample natural light. Off the back of the kitchen, you'll find access to a 300 sq. ft. basement that provides extra storage and holds the furnace and water heater.

The third bedroom is set up as a master suite, complete with a walk-in closet, a $\frac{3}{4}$ bathroom, and direct access to the backyard.

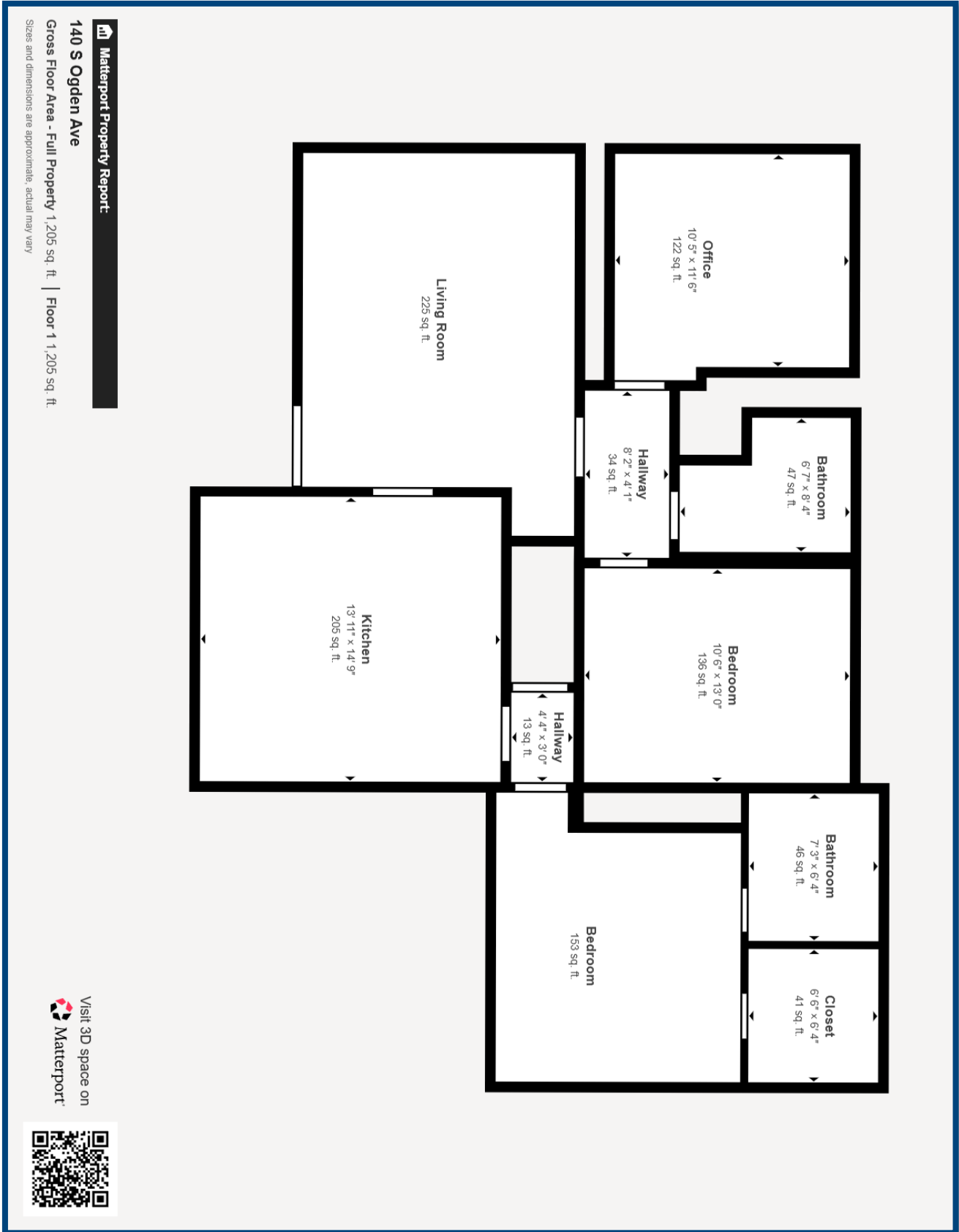
Overall, the property is a great setup for a family with a private backyard in a great neighborhood.



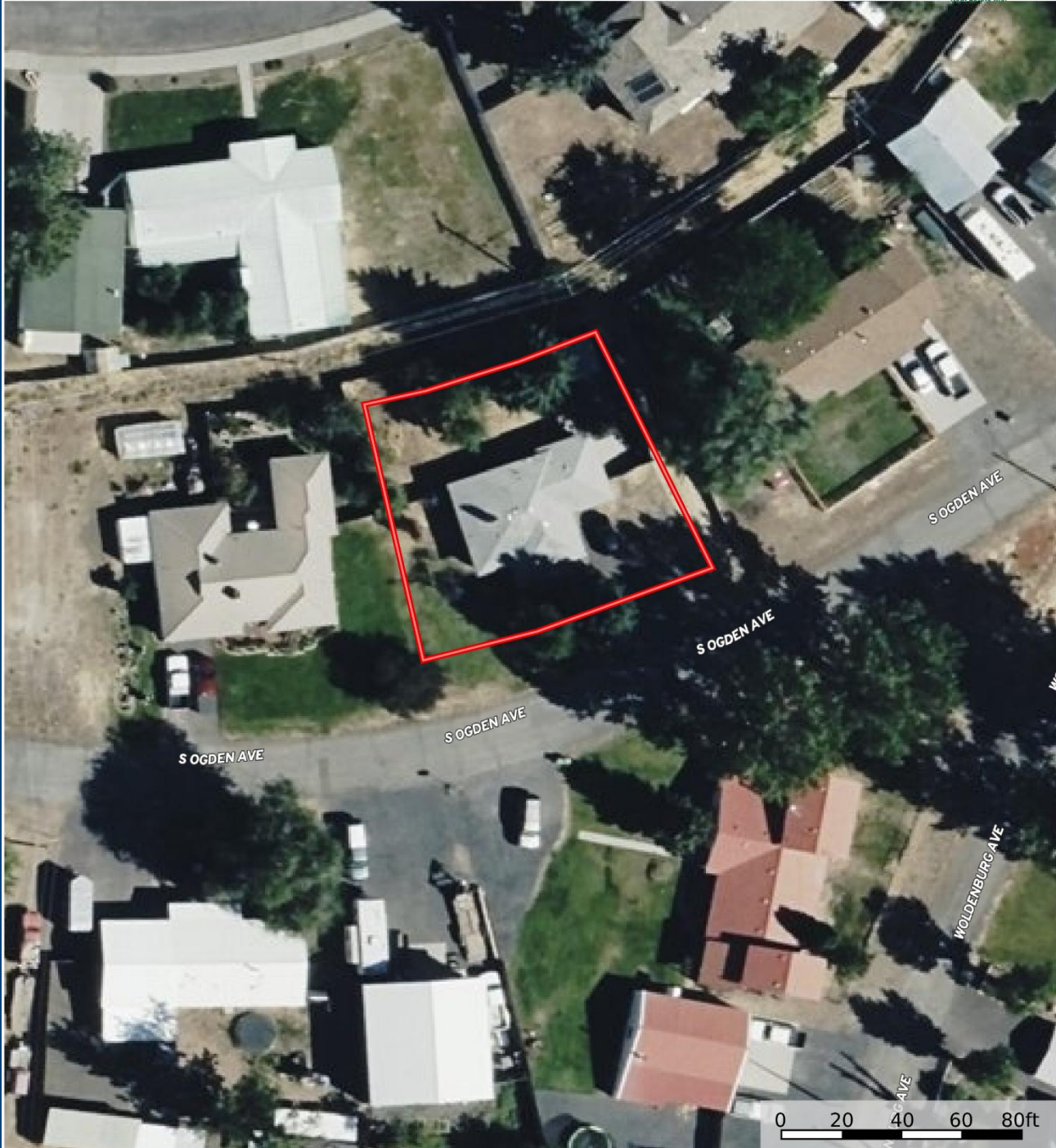








140 S Ogden Ave, Hines - Shreeve
Oregon, AC +/-




- Boundary
- Forest Service
- State Land
- Fish and Wildlife
- National Park
- Other
- BLM
- Local Government
- Stream, Intermittent
- River/Creek
- Water Body

United County Jett Blackburn Real Estate (map for illustration purposes only)
P: 541-413-5660 www.jettblackburn.com 707 Ponderosa Village, Burns, OR 97720

The information contained herein was obtained from sources deemed to be reliable. Land id™ Services makes no warranties or guarantees as to the completeness or accuracy thereof.

140 S Ogden Ave, Hines - Shreeve
Oregon, AC +/-



United County Real Estate
Jett Blackburn Real Estate Inc.

0 1000 2000 3000 4000ft

- Boundary
- Forest Service
- State Land
- Fish and Wildlife
- National Park
- Other
- BLM
- Local Government
- Stream, Intermittent
- River/Creek
- Water Body

United County Jett Blackburn Real Estate (map for illustration purposes only)
P: 541-413-5660 www.jettblackburn.com 707 Ponderosa Village, Burns, OR 97720

The information contained herein was obtained from sources deemed to be reliable. Land id™ Services makes no warranties or guarantees as to the completeness or accuracy thereof.