



Jeff Taylor

UCRE Commercial

214-612-6300

License: 0677175

Jeff@UCRETexas.com

TABLE OF CONTENTS

Property Info & Disclaimer	2	Property Description	3
Property Photos	5	Aerial & Location Report	9



Allcare

Medical Supply

5016 Jacksboro Hwy
Fort Worth, TX 76114



ALLCARE MEDICAL SUPPLY

PROPERTY INFORMATION

Purchase Price
\$679,000.00

Property Address
5016 Jacksboro Hwy
Fort Worth, TX 76114

Property Size
2,475 Sq. Ft.

Land Size
24,750.00 Sq. Ft.

COMPANY DISCLAIMER

This information has been obtained from sources believed reliable. We have not verified it and make no guarantee, warranty or representation about it. Any projections, opinions, assumptions or estimates used are for example only and do not represent the current or future performance of the property. You and your advisors should conduct a careful, independent investigation of the property to determine to your satisfaction the suitability of the property for your needs. Photos herein are the property of their respective owners and use of these images without the express written consent of the owner is prohibited. .



PROPERTY OVERVIEW

Located in the growing Sansom Park area of northwest Fort Worth, this 2,475 sq. ft. freestanding retail building offers excellent visibility and accessibility along Jacksboro Highway (State Highway 199), with daily traffic counts exceeding 25,000 vehicles. Built in 1996 and situated on a 0.57-acre lot, the property features ample frontage, dedicated parking, and convenient ingress/egress, making it ideal for a variety of retail, medical, or service-oriented businesses.

ALLCARE

MEDICAL SUPPLY

5016 Jacksboro Hwy
Fort Worth, TX 76114

5016 Jacksboro Highway, Freestanding Retail Building & Established Medical Supply Business

Located in the growing Sansom Park area of northwest Fort Worth, this 2,475 sq. ft. freestanding retail building offers excellent visibility and accessibility along Jacksboro Highway (State Highway 199), with daily traffic counts exceeding 25,000 vehicles. Built in 1996 and situated on a 0.57-acre lot, the property features ample frontage, dedicated parking, and convenient ingress/egress, making it ideal for a variety of retail, medical, or service-oriented businesses.

Currently occupied by Allcare Medical Supply, a well-established home medical equipment and supply company serving North Texas since 1995, the site offers the unique opportunity to purchase both the real estate and the operating business, together or separately.

- Offering Details: **Real Estate Price: \$679,000**

Seller will consider selling real estate and business separately.

Property Highlights:

- **Building Size:** 2,475 sq. ft. single-story retail structure
- **Lot Size:** 24,750 sq. ft. (0.57 acres)
- **Year Built:** 1996
- **Zoning:** Retail - General/Specialty (City of Sansom Park)
- **Frontage & Access:** Prominent visibility on Jacksboro Hwy, high traffic counts
- **Current Use:** Medical equipment and supply store
- **Market Strength:** Located in a submarket with low vacancy (4.5%) and average rents of \$19.50/SF
- **Surrounding Area:** Established commercial corridor with nearby residential neighborhoods, schools, and complementary businesses

This is a rare opportunity to acquire a highly visible property along a busy Fort Worth retail corridor, with the option to step into a long-standing business with a loyal customer base and growth potential.

PROPERTY PHOTOS



PROPERTY PHOTOS



**ALLCARE
MEDICAL SUPPLY**



PROPERTY PHOTOS



ALLCARE
MEDICAL SUPPLY

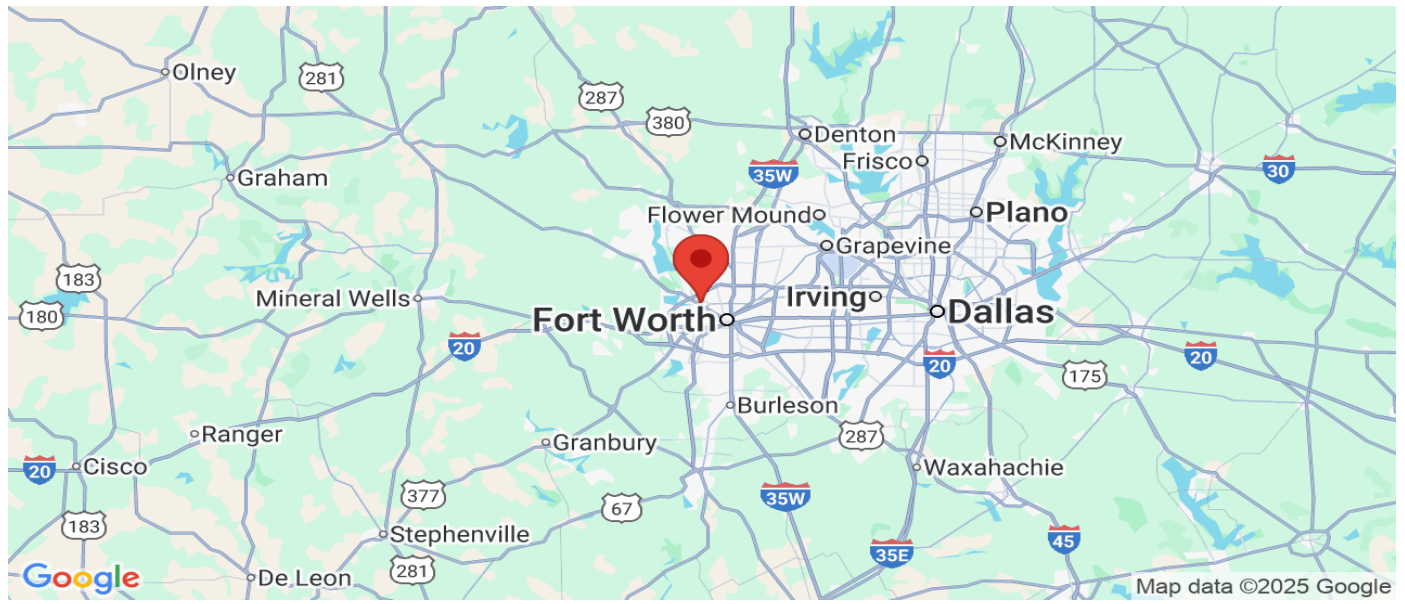


PROPERTY PHOTOS



ALLCARE MEDICAL SUPPLY

AREA LOCATION MAP



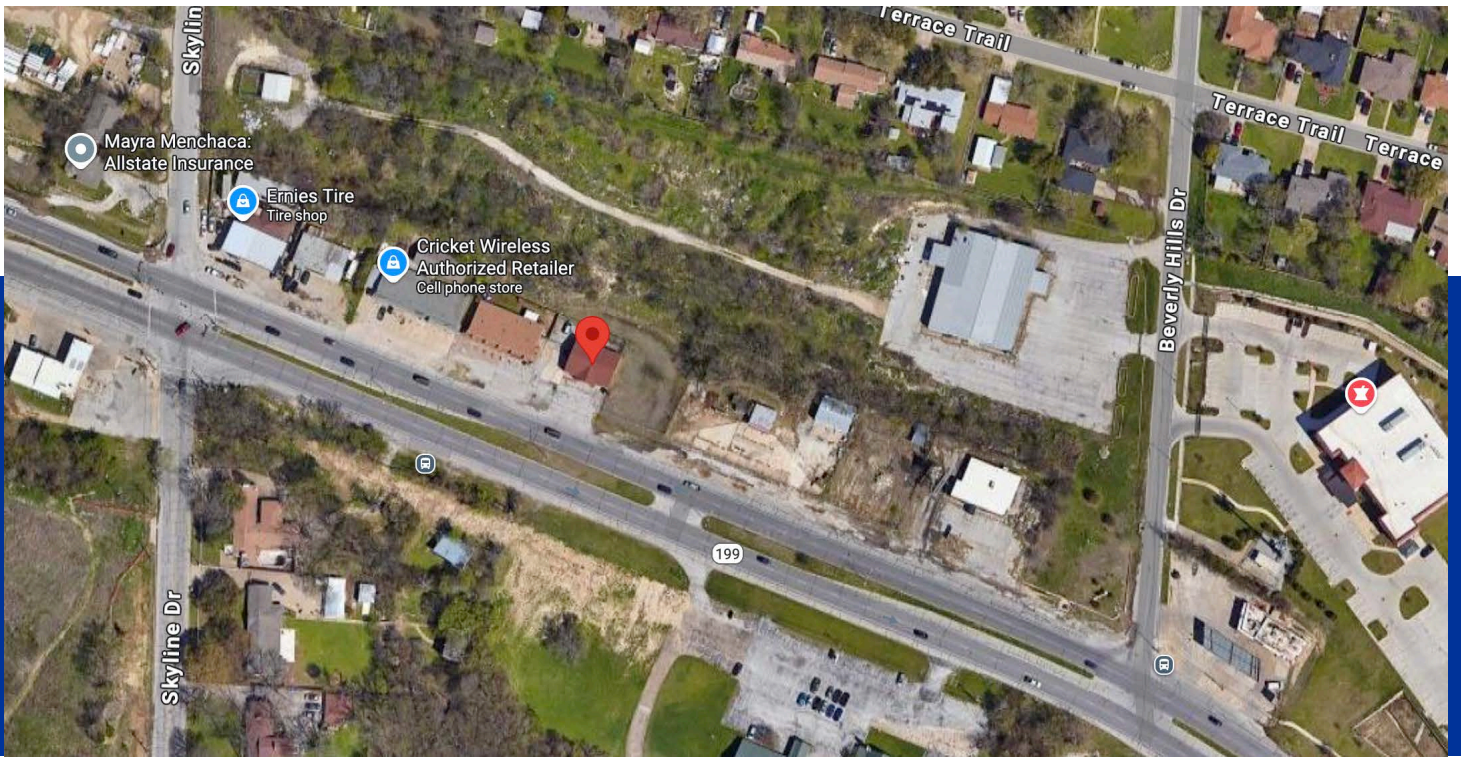
ALLCARE

MEDICAL SUPPLY

5016 Jacksboro Hwy
Fort Worth, TX, 76114



Jeff Taylor
UCRE Commercial
214-612-6300
License: 0677175
Jeff@UCRETexas.com
www.UCRETexas.com



ALLCARE

MEDICAL SUPPLY

5016 Jacksboro Hwy
Fort Worth, TX, 76114



Jeff Taylor
UCRE Commercial
214-612-6300
License: 0677175
Jeff@UCRETexas.com
www.UCRETexas.com



CONTACT



214-612-6300



Jeff@UCRETexas.com



601 W Northwest Hwy
Grapevine, TX, 76051, United States