

Harney Lake Pivots

360+/- Deeded Acres | 291.2+/- Acres Water Rights



Selling Oregon Farms & Ranches Since 1960

FOR SALE

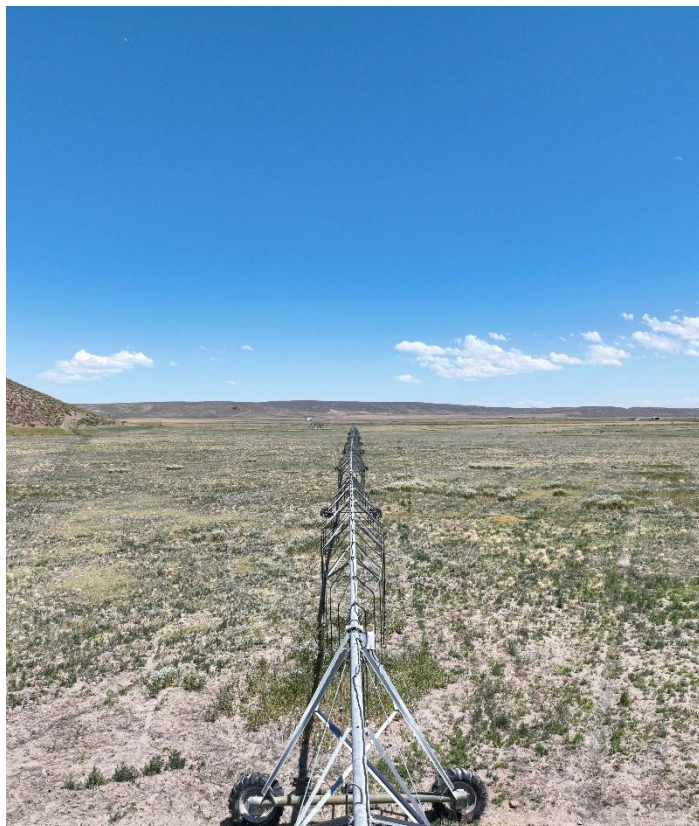


This Eastern Oregon Farm is in the high deserts of Harney County. Approximately 30 miles south of Burns Oregon, Haney Lake Pivots has sandy soil with 4 pivots.

The farm consists of 360 total deeded acres with 291.2 acres of pivot irrigation through 4 pivots, all of which is certified Organic. The land is completely perimeter fenced with cross fencing in the middle, where a solar well & trough is located for livestock use. Three phase power runs the distance of the south boundary.

Overall, it would be a great acreage to run cows in the peace & quiet of the high deserts in Eastern Oregon.





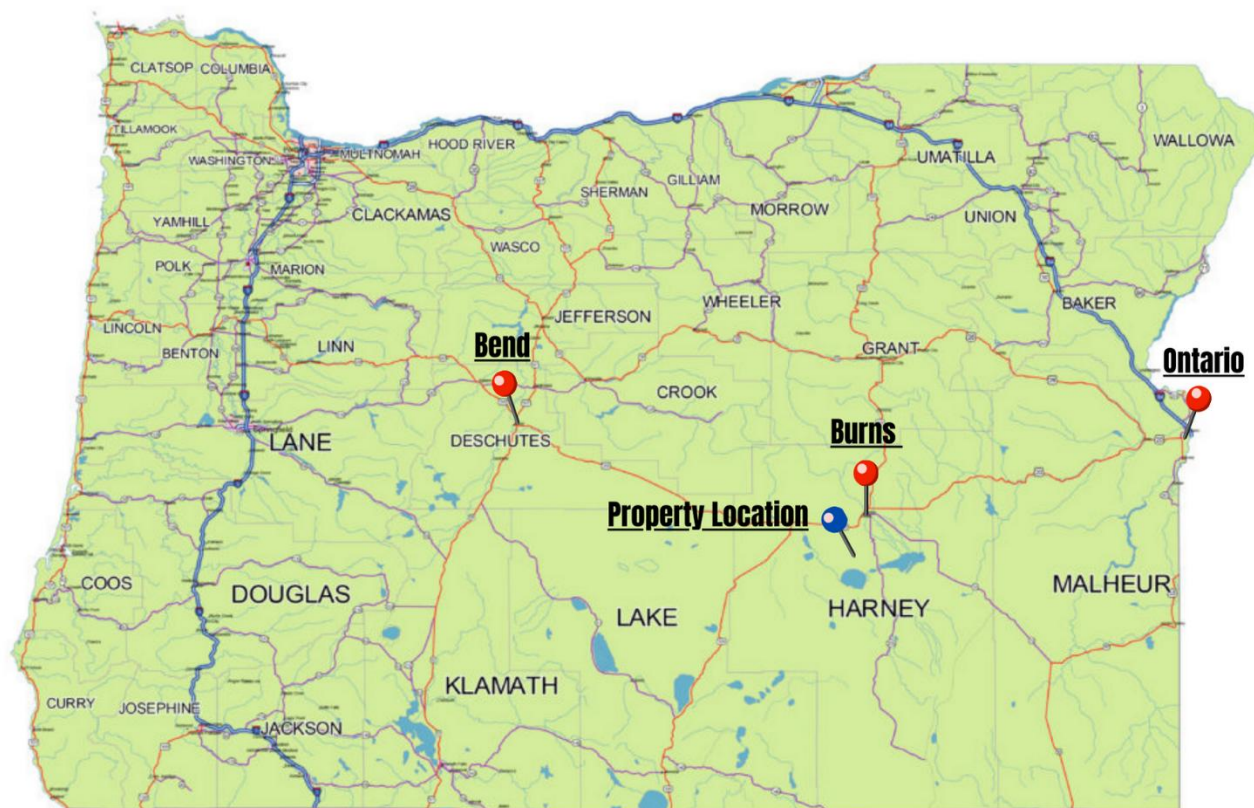


SURROUNDING AREA

Harney County, located in the expansive high deserts of rural Eastern Oregon, ranks as the 10th largest county in the United States, encompassing over 10,000 square miles. This vast area boasts diverse landscapes and abundant wildlife. At the southern tip of the county, one can marvel at the stunning vistas of Steens Mountain, which oversees the Alvord Desert & Trout Creek Mountains. The northern region features the Malheur National Forest, Silvies River, & timber country.

Wildlife abounds, ranging from large game such as elk, pronghorn, & mule deer to a variety of smaller critters and bird species typical of the Pacific Northwest. The county's primary community, Burns, is situated midway between Central Oregon & the Idaho Border. A two-hour trip to the west leads to Bend, while two hours east reaches the Idaho border and the Treasure Valley.





0 100 200 Miles

OREGON

Location

Burns Oregon: <https://www.cityofburnsor.gov/>
27 min (24.8 mi)
Population: 4,422 (2021)

Ontario Oregon: <https://www.ontariooregon.org/>
2 hour 37 min (152 mi)
11,626 (2021)

Bend Oregon: <https://www.bendoregon.gov/>
2 hour 35 min (155 mi)
102,059 (2021)



Untitled
Oregon, AC +/-

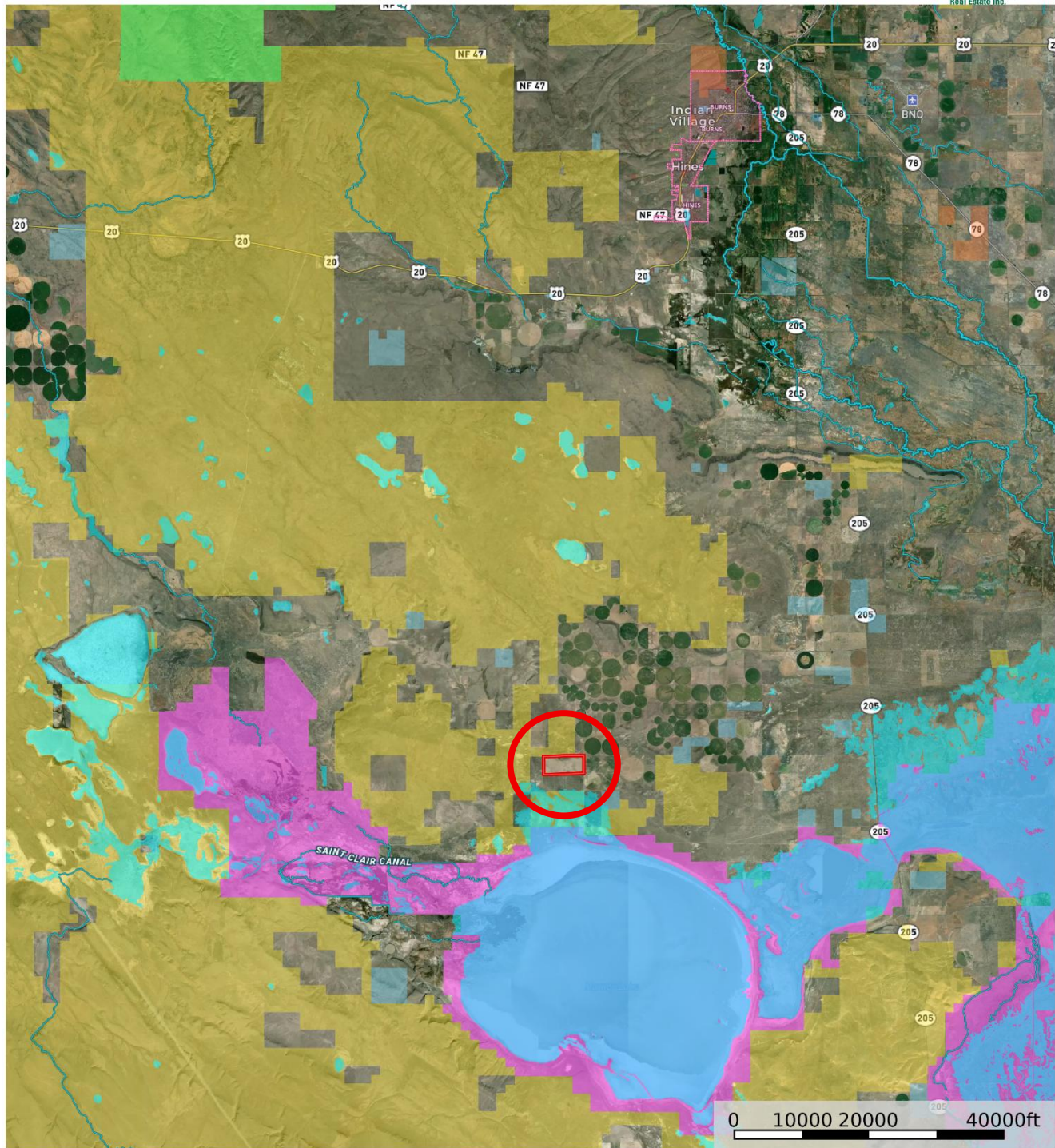


United County Jett Blackburn Real Estate (map for illustration purposes only)
P: 541-413-5660 www.jettblackburn.com 707 Ponderosa Village, Burns, OR 97720

id. The information contained herein was obtained from sources deemed to be reliable. Land id™ Services makes no warranties or guarantees as to the completeness or accuracy thereof.



Untitled
Oregon, AC +/-



United County Jett Blackburn Real Estate (map for illustration purposes only)
P: 541-413-5660 www.jettblackburn.com 707 Ponderosa Village, Burns, OR 97720

id. The information contained herein was obtained from sources deemed to be reliable. Land id™ Services makes no warranties or guarantees as to the completeness or accuracy thereof.



ADDRESS: Approx. 25 miles south of Burns off Weaver Springs Rd

LEGAL DESC: 26S30N00-05200

ACREAGE: 360+/- Total Deeded Acres consisting of:

- 291.2+/- Irrigated under pivots
- 68.8+/- Native pasture, pivot corners, dryland

IRR. EQUIPMENT: 4 Pivots

WATER RIGHTS:

Acres
291.2

Permit #
G-17650

Certificate
96926

Priority Date
March 17, 2009

UTILITIES: Power - Harney Electric Coop
Water/Sewer – Wells & private septic
Internet – Starlink

TAXES: \$2,306.11 – Farm Deferral, Per County Site



The seller and his agent makes these representations in good faith, from personal knowledge and experience. However, the buyer should inspect this property or cause this property to be inspected by knowledgeable persons so that the buyer may purchase without relying upon any representations made by the seller or his agent. Also, unless otherwise specified, we, Jett Blackburn Real Estate, Inc. agents, represent the seller on any of our listings.

United Country Jett Blackburn Real Estate

Jett Blackburn Real Estate Inc. is an independently owned brokerage franchised under United Country. First opened in 1960, Jett Blackburn Real Estate has been the oldest standing firm in their area specializing in sales of farms, ranches, hunting properties, recreational, & more. Curt Blackburn is the current owner & principal broker of Jett Blackburn Real Estate.

United Country is a franchise-based real estate marketing company that has shown tremendous success in the real estate industry for the last 95 years. Throughout the entire United States, UC has sold over 2.8 million acres in 2022 alone, with \$9.9 billion in sales all together that covered a majority of recreational, farms, & ranches. To help make these sales possible UC has a comprehensive marketing program that includes printed advertising and special property marketing websites for farms & ranches. These marketing sites include Western Livestock Journal, Land & Farm, Capital Press, Lands of America, Farm & Ranch, Lands.com, SPG's, and much more. They are partnered with Realtree United Country Hunting Properties & UC Ranch

Presented By



Curt Blackburn

curt@jettblackburn.com

(541)413-5777



Jake Blackburn

jake@jettblackburn.com

(541)413-5774