



**Trey Meacham**

meachamandassociatesins@gmail.com

Office: 601-250-0017

Cell: 601-622-1974

**SouthernStatesRealty.com**



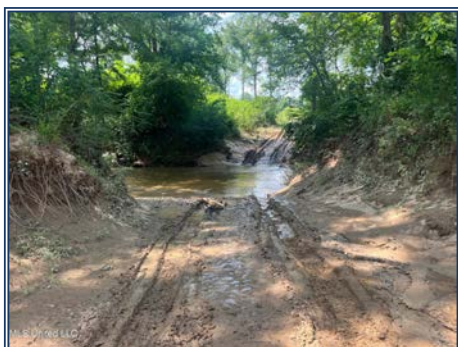
**Southern  
States Realty**



Welcome to the Jasper 132, this tract is accessed by easement off Hwy 11 just SE of Heidelberg. Tract has about 40 acres of mature timber and has 3-year-old loblolly pines replanted. This tract is turnkey with great deer hunting, and Jasper County is known for fantastic turkey hunting. Great interior roads with food plots and stands. Call your favorite realtor today and come take a look at this tract. It's priced to sell and won't last long.

**Highway 11, Heidelberg, MS**

31.851216, -89.003859 GPS



**\$140,000**

**132± Acres  
MLS #4115410**

