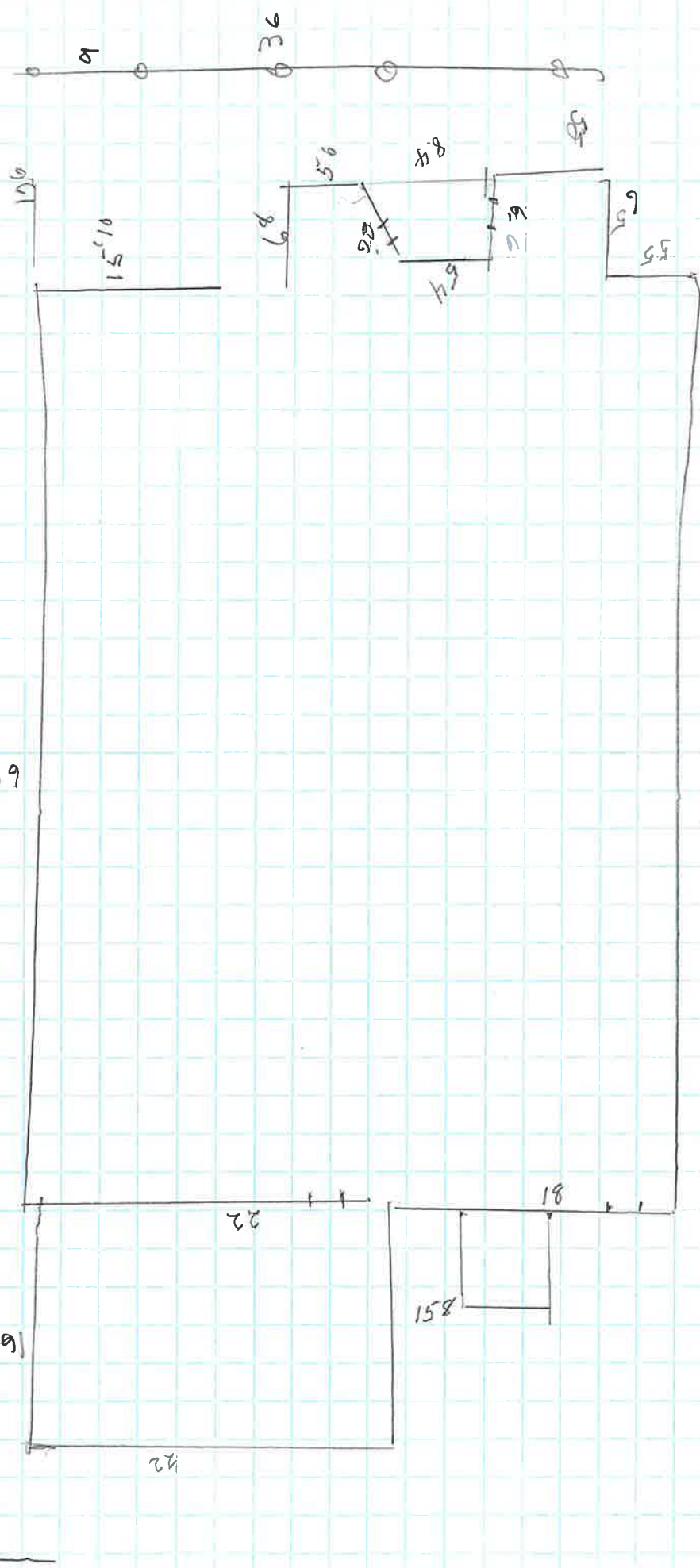


Heidi Christ

$2,965 \text{ SF}$
 $\frac{2,965}{39} = 76.0256$
 $6.5 \times 8 = 52$
 $60 \times 4.5 = 270$
 $22 \times 16 = 352$



1,640 SF

4x8 = 32

4x10 = 40

8x16 = 128

120 = 28x46

16x28

91

Rear porch

91 Bath

40

40

4

28
Nestling

4

