

Country Sage Acres



Selling Oregon Farms & Ranches Since 1960

FOR SALE



LEGAL DESC.: 24S32V00-00-04700 & 24S32V00-00-04600
ACREAGE: 160 +/- acres
TAXES: \$58.10
UTILITIES: Private Well
PRICE: \$87,500.00
FINANCING: Cash or Bank Financing

This Eastern Oregon property is situated just 0.75 miles east of South Harney Road on Lane 18. The property is conveniently located, it's less than a 20-minute drive to both Crane and Burns. The 160 deeded acres are fully enclosed with perimeter fencing and feature a stock well equipped with a solar pump. Historically used for grazing cattle, the land remains well-suited for similar agricultural use by a new owner. With its easy access to South Harney Road, the property also presents an excellent opportunity for building a home.

The seller and his agent makes these representations in good faith, from personal knowledge and experience. However, the buyer should inspect this property or cause this property to be inspected by knowledgeable persons so that the buyer may purchase without relying upon any representations made by the seller or his agent. Also, unless otherwise specified, we, Jett Blackburn Real Estate, Inc. agents, represent the seller on any of our listings.







160 Acres - Wolfskill
Oregon, AC +/-

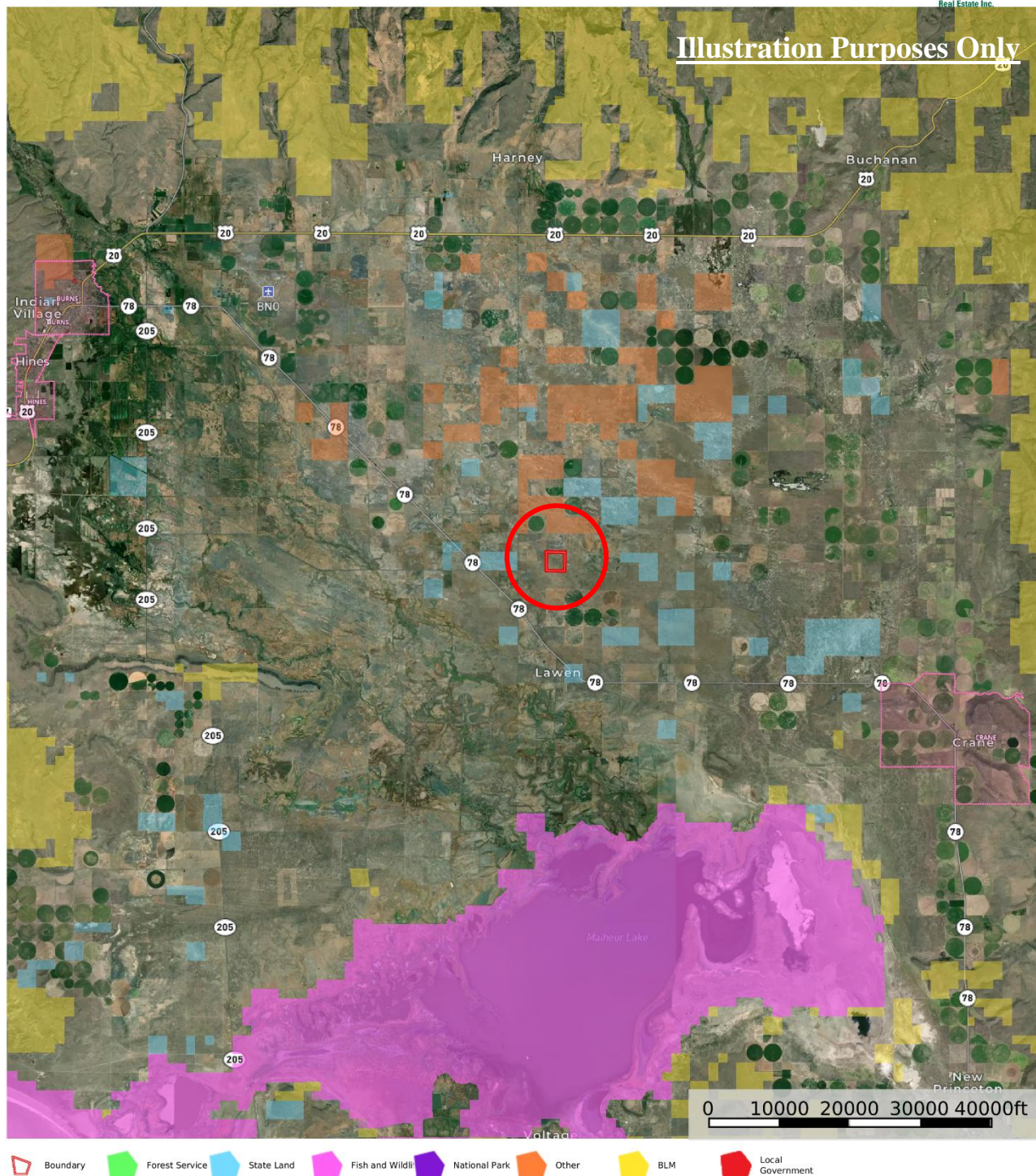


United County Jett Blackburn Real Estate (map for illustration purposes only)
P: 541-413-5660 www.jettblackburn.com 707 Ponderosa Village, Burns, OR 97720

id. The information contained herein was obtained from sources deemed to be reliable. Land id™ Services makes no warranties or guarantees as to the completeness or accuracy thereof.



160 Acres - Wolfskill
Oregon, AC +/-



United County Jett Blackburn Real Estate (map for illustration purposes only)
P: 541-413-5660 www.jettblackburn.com 707 Ponderosa Village, Burns, OR 97720

id. The information contained herein was obtained from sources deemed to be reliable. Land id™ Services makes no warranties or guarantees as to the completeness or accuracy thereof.