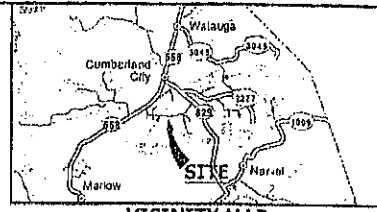


**C&C**  
**LAND SURVEYING**  
 516 COURTHOUSE SQUARE P.O. BOX 7130 BURKESVILLE, KY 42717  
 EMAIL: info@candclandsurveying.com  
 PHONE: 270-864-1274 FAX: 270-864-3189  
 JOHN CAMPBELL #3970 JEREMY COOKSEY #3949

**GPS NOTE**  
 THE SURVEY SHOWN HEREON IS BASED ON GPS DATA COLLECTED USING BOTH STATIC AND RTK METHODS WITH OPTICALLY LEVEL RECEIVERS (LEAS) WITH COLLECTED FOR THE BOUNDARY OF THIS SURVEY WAS COLLECTED BY EITHER RTK OR STATIC GPS OBSERVATION WHEN APPROPRIATE OR BY CONVENTIONAL MEANS FROM STATIC GPS ESTABLISHED CONTROL POINTS. RTK DATA WAS COLLECTED FOR ALL BENCH MARKS AND CONTROL POINTS AND BOUNDARY INFORMATION WAS COLLECTED AT STATIC POINTS WITH AN RMS OF 8.00 OR LESS. NETWORK ADJUSTMENT BASELINES HAVE BEEN CHECKED THROUGH STATIC OBSERVATIONS AND CONVENTIONAL MEANS. THE DISTANCES SHOWN HEREON ARE BASED ON STATE PLANE COORDINATES AND ARE SUBJECT TO THE APPLICABLE CORNERED SCALE FACTOR. DATA WAS COLLECTED WITH ASSIGNED COORDINATES IN MAPPROJ PLANES WITHING PROJECTION AND GRID SCALE OF 10.

0 200 400 600  
 SCALE: 1" = 200'



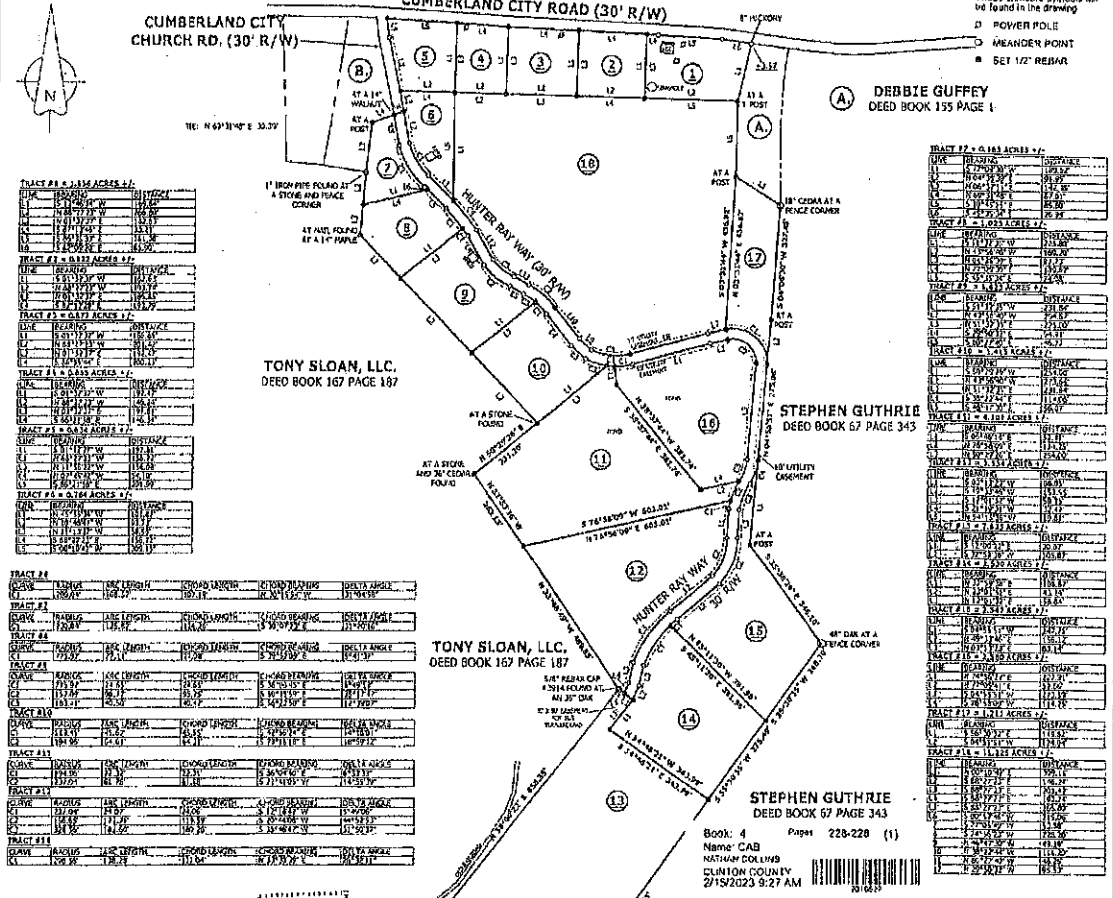
**ALSO SEE**  
 THIS PROPERTY DOES NOT LIE WITHIN A FLOOD HAZARD AREA PER FEMA FLOOD INSURANCE RATE MAP NUMBER 15050C 005 D EFFECTIVE DATE: JULY 23, 2010

**B. CUMBERLAND CITY METHODIST CHURCH TRUSTEE**  
 DEED BOOK 77 PAGE 212

TRACT #	ACRES	OWNER	DEED BOOK	PAGE
TRACT #1	0.11	TONY SLOAN, LLC	167	187
TRACT #2	0.11	TONY SLOAN, LLC	167	187
TRACT #3	0.11	TONY SLOAN, LLC	167	187
TRACT #4	0.11	TONY SLOAN, LLC	167	187
TRACT #5	0.11	TONY SLOAN, LLC	167	187
TRACT #6	0.11	TONY SLOAN, LLC	167	187
TRACT #7	0.11	TONY SLOAN, LLC	167	187
TRACT #8	0.11	TONY SLOAN, LLC	167	187
TRACT #9	0.11	TONY SLOAN, LLC	167	187
TRACT #10	0.11	TONY SLOAN, LLC	167	187
TRACT #11	0.11	TONY SLOAN, LLC	167	187
TRACT #12	0.11	TONY SLOAN, LLC	167	187
TRACT #13	0.11	TONY SLOAN, LLC	167	187
TRACT #14	0.11	TONY SLOAN, LLC	167	187
TRACT #15	0.11	TONY SLOAN, LLC	167	187
TRACT #16	0.11	TONY SLOAN, LLC	167	187
TRACT #17	0.11	TONY SLOAN, LLC	167	187
TRACT #18	0.11	TONY SLOAN, LLC	167	187
TRACT #19	0.11	TONY SLOAN, LLC	167	187
TRACT #20	0.11	TONY SLOAN, LLC	167	187
TRACT #21	0.11	TONY SLOAN, LLC	167	187
TRACT #22	0.11	TONY SLOAN, LLC	167	187
TRACT #23	0.11	TONY SLOAN, LLC	167	187
TRACT #24	0.11	TONY SLOAN, LLC	167	187
TRACT #25	0.11	TONY SLOAN, LLC	167	187
TRACT #26	0.11	TONY SLOAN, LLC	167	187
TRACT #27	0.11	TONY SLOAN, LLC	167	187
TRACT #28	0.11	TONY SLOAN, LLC	167	187
TRACT #29	0.11	TONY SLOAN, LLC	167	187
TRACT #30	0.11	TONY SLOAN, LLC	167	187
TRACT #31	0.11	TONY SLOAN, LLC	167	187
TRACT #32	0.11	TONY SLOAN, LLC	167	187
TRACT #33	0.11	TONY SLOAN, LLC	167	187
TRACT #34	0.11	TONY SLOAN, LLC	167	187
TRACT #35	0.11	TONY SLOAN, LLC	167	187
TRACT #36	0.11	TONY SLOAN, LLC	167	187
TRACT #37	0.11	TONY SLOAN, LLC	167	187
TRACT #38	0.11	TONY SLOAN, LLC	167	187
TRACT #39	0.11	TONY SLOAN, LLC	167	187
TRACT #40	0.11	TONY SLOAN, LLC	167	187
TRACT #41	0.11	TONY SLOAN, LLC	167	187
TRACT #42	0.11	TONY SLOAN, LLC	167	187
TRACT #43	0.11	TONY SLOAN, LLC	167	187
TRACT #44	0.11	TONY SLOAN, LLC	167	187
TRACT #45	0.11	TONY SLOAN, LLC	167	187
TRACT #46	0.11	TONY SLOAN, LLC	167	187
TRACT #47	0.11	TONY SLOAN, LLC	167	187
TRACT #48	0.11	TONY SLOAN, LLC	167	187
TRACT #49	0.11	TONY SLOAN, LLC	167	187
TRACT #50	0.11	TONY SLOAN, LLC	167	187

TRACT #	ACRES	OWNER	DEED BOOK	PAGE
TRACT #1	0.11	TONY SLOAN, LLC	167	187
TRACT #2	0.11	TONY SLOAN, LLC	167	187
TRACT #3	0.11	TONY SLOAN, LLC	167	187
TRACT #4	0.11	TONY SLOAN, LLC	167	187
TRACT #5	0.11	TONY SLOAN, LLC	167	187
TRACT #6	0.11	TONY SLOAN, LLC	167	187
TRACT #7	0.11	TONY SLOAN, LLC	167	187
TRACT #8	0.11	TONY SLOAN, LLC	167	187
TRACT #9	0.11	TONY SLOAN, LLC	167	187
TRACT #10	0.11	TONY SLOAN, LLC	167	187
TRACT #11	0.11	TONY SLOAN, LLC	167	187
TRACT #12	0.11	TONY SLOAN, LLC	167	187
TRACT #13	0.11	TONY SLOAN, LLC	167	187
TRACT #14	0.11	TONY SLOAN, LLC	167	187
TRACT #15	0.11	TONY SLOAN, LLC	167	187
TRACT #16	0.11	TONY SLOAN, LLC	167	187
TRACT #17	0.11	TONY SLOAN, LLC	167	187
TRACT #18	0.11	TONY SLOAN, LLC	167	187
TRACT #19	0.11	TONY SLOAN, LLC	167	187
TRACT #20	0.11	TONY SLOAN, LLC	167	187
TRACT #21	0.11	TONY SLOAN, LLC	167	187
TRACT #22	0.11	TONY SLOAN, LLC	167	187
TRACT #23	0.11	TONY SLOAN, LLC	167	187
TRACT #24	0.11	TONY SLOAN, LLC	167	187
TRACT #25	0.11	TONY SLOAN, LLC	167	187
TRACT #26	0.11	TONY SLOAN, LLC	167	187
TRACT #27	0.11	TONY SLOAN, LLC	167	187
TRACT #28	0.11	TONY SLOAN, LLC	167	187
TRACT #29	0.11	TONY SLOAN, LLC	167	187
TRACT #30	0.11	TONY SLOAN, LLC	167	187
TRACT #31	0.11	TONY SLOAN, LLC	167	187
TRACT #32	0.11	TONY SLOAN, LLC	167	187
TRACT #33	0.11	TONY SLOAN, LLC	167	187
TRACT #34	0.11	TONY SLOAN, LLC	167	187
TRACT #35	0.11	TONY SLOAN, LLC	167	187
TRACT #36	0.11	TONY SLOAN, LLC	167	187
TRACT #37	0.11	TONY SLOAN, LLC	167	187
TRACT #38	0.11	TONY SLOAN, LLC	167	187
TRACT #39	0.11	TONY SLOAN, LLC	167	187
TRACT #40	0.11	TONY SLOAN, LLC	167	187
TRACT #41	0.11	TONY SLOAN, LLC	167	187
TRACT #42	0.11	TONY SLOAN, LLC	167	187
TRACT #43	0.11	TONY SLOAN, LLC	167	187
TRACT #44	0.11	TONY SLOAN, LLC	167	187
TRACT #45	0.11	TONY SLOAN, LLC	167	187
TRACT #46	0.11	TONY SLOAN, LLC	167	187
TRACT #47	0.11	TONY SLOAN, LLC	167	187
TRACT #48	0.11	TONY SLOAN, LLC	167	187
TRACT #49	0.11	TONY SLOAN, LLC	167	187
TRACT #50	0.11	TONY SLOAN, LLC	167	187

**LEGEND**  
 These standard symbols will be found in the drawing:  
 POWER POLE  
 MEANDER POINT  
 SET 1/2" REBAR



**UTILITY NOTE**  
 NO REPRESENTATION IS MADE AS TO THE ACCESSIBILITY AND OR COST OF PROPOSED UTILITIES TO ANY TRACT

**NOTES**  
 SUBJECT TO ANY HIGHWAY RIGHT-OF-WAYS  
 REMAINS LEGAL TO ROAD SURVEY BASED ON TRUE NORTH TAKEN FROM G.P.S. OBSERVATION ON 01-04-23  
 SET 1/2" X 1/4" REBAR WITH YELLOW PLASTIC CAP 50-3 COOKSEY #3949 AT ALL CORNERS UNLESS OTHERWISE NOTED  
 THIS IS NOT INTENDED IN ANY WAY TO INDICATE THE NECESSITY OF ANY EASEMENT WHATSOEVER  
 THIS SURVEY IS SUBJECT TO ANY AND ALL FACTS THAT MAY BE DISCOVERED BY A REAL AND ACCURATE TITLE SEARCH

**UNITED COUNTRY LUMBER AND LAND AGENT JEREMY B. COOKSEY**  
 115 CUMBERLAND MARKET ALBANY, KY 42002

**TONY SLOAN, LLC**  
 DEED BOOK 167 PAGE 187

**STEPHEN GUTHRIE**  
 DEED BOOK 67 PAGE 343

**FILED**  
 AT 8:05 A.M.  
 FEB 15 2023  
 CLINTON COUNTY  
 WATKINS COLLINS  
 County Clerk

AREA OF 30' R/W = 1.741 ACRES +/-  
**TOTAL AREA OF SURVEY: 47.050 ACRES +/-**

**HICKS HIDEAWAY SUBDIVISION**  
 BOUNDARY SURVEY AND SUBDIVISION  
 FOR A PORTION OF THE PROPERTY OF  
**ROBERT HICKS**  
 DEED BOOK 169 PAGE 621  
 LOCATED IN THE CUMBERLAND CITY COMMUNITY OF CLINTON CO., KY.

150619-0001-001 THE STATE OF KY. DEPARTMENT OF REVENUE HAS REVIEWED THIS SURVEY AND HAS DETERMINED THAT IT IS IN ACCORDANCE WITH THE REQUIREMENTS OF KRS 129.010 AND HAS ISSUED THIS SURVEY MAP. THE SURVEY MAP IS VALID FOR THE PURPOSES OF THE PROPERTY TAX ASSESSMENT AND RECORDS DEPARTMENT OF REVENUE. THE SURVEY MAP IS VALID FOR THE PURPOSES OF THE PROPERTY TAX ASSESSMENT AND RECORDS DEPARTMENT OF REVENUE. THE SURVEY MAP IS VALID FOR THE PURPOSES OF THE PROPERTY TAX ASSESSMENT AND RECORDS DEPARTMENT OF REVENUE.

JEREMY B. COOKSEY # 3949 DATE 2-14-23  
 SURVEY DATE START: 01-04-23 FINISH: 01-23-23  
 PLAT DATE: 02-03-23 SCALE: 1" = 200' FILE: 22-21-0000